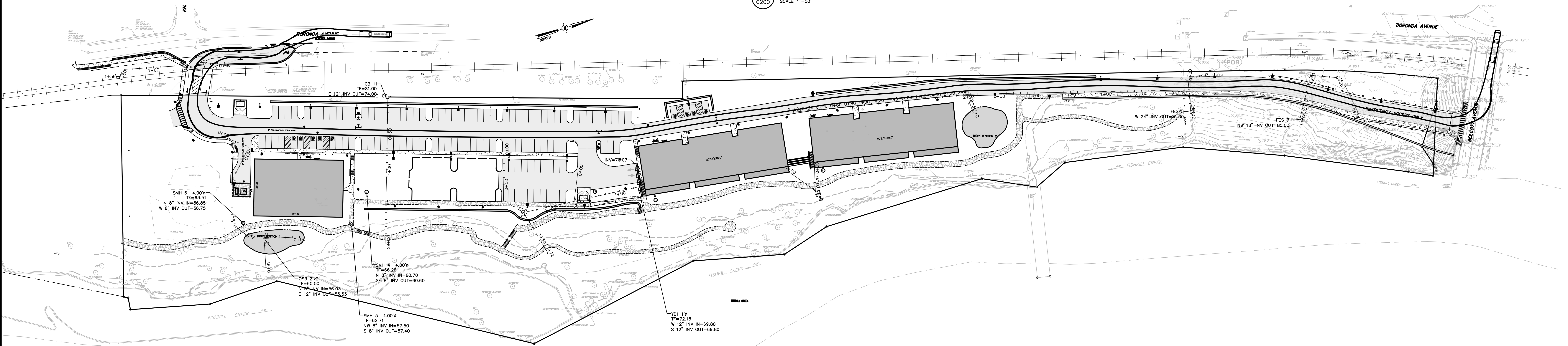
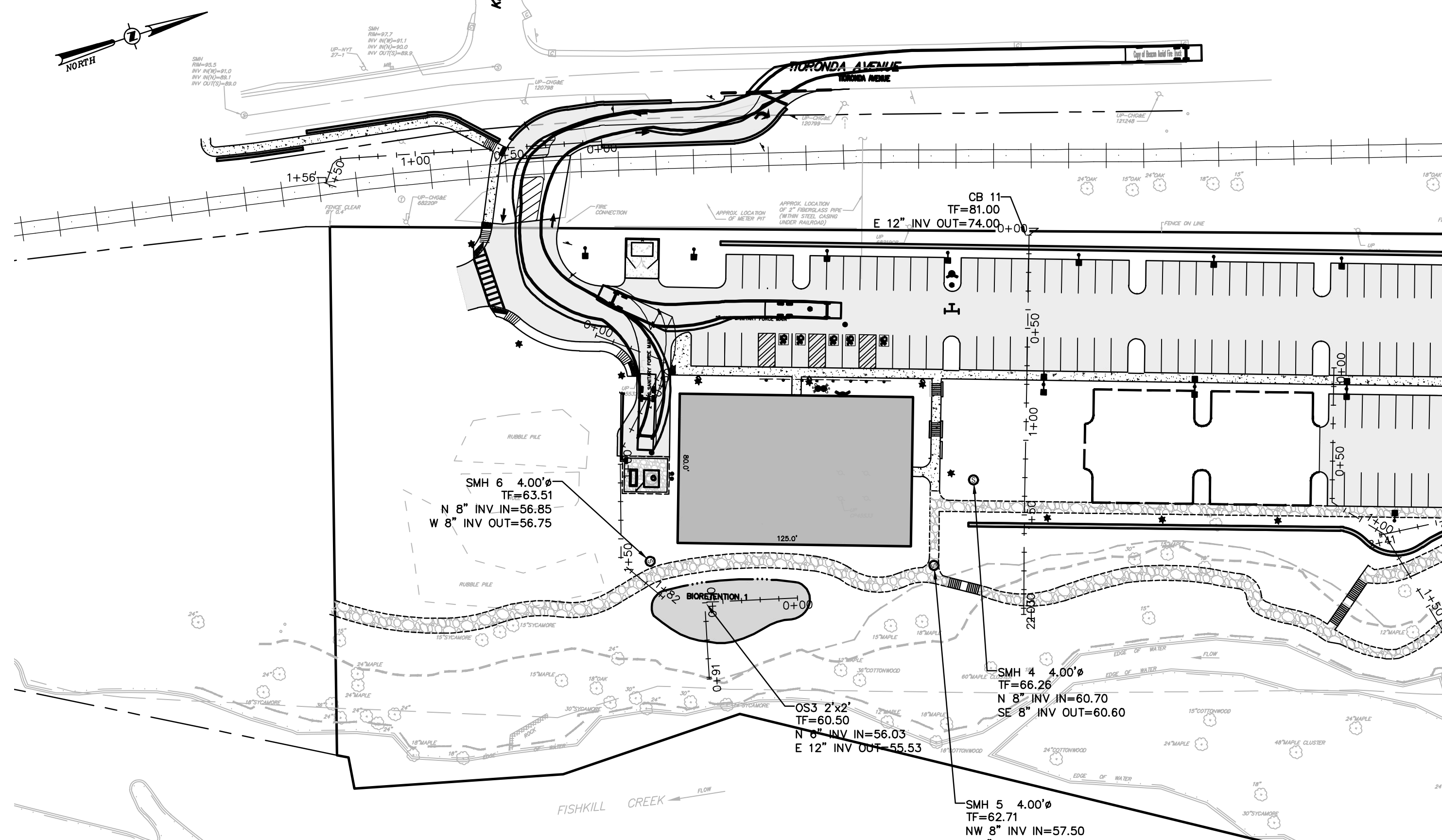


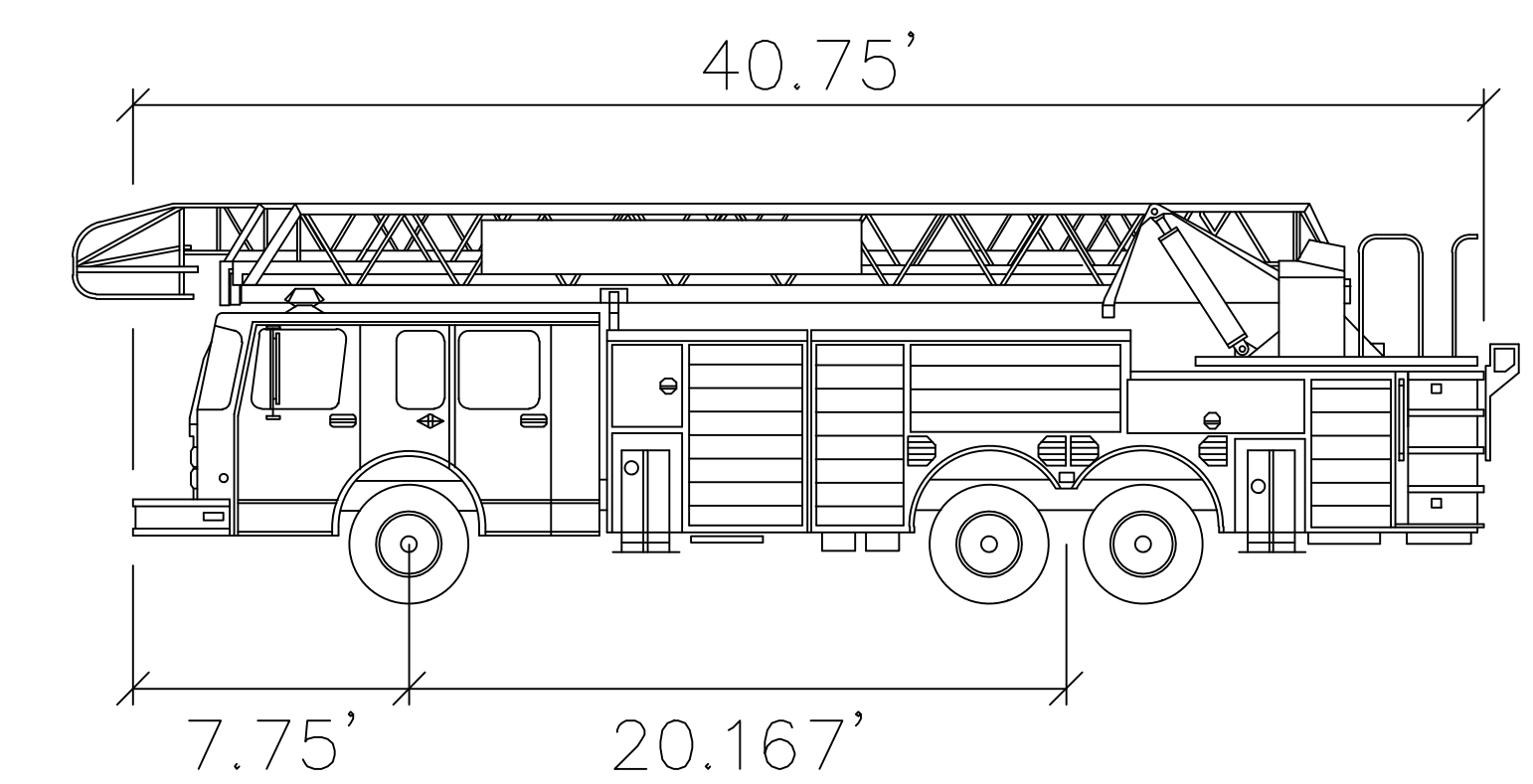
1 SWEST SITE ACCESS MANEUVERING PLAN  
SCALE: 1"=50'



2 NORTH SITE ACCESS MANEUVERING PLAN  
SCALE: 1"=50'



3 LOWER COMMERCIAL ACCESS  
SCALE: 1"=50'



BEACON FIRE TRUCK

	feet
Width	: 8.33
Track	: 8.41
Lock to Lock Time	: 6.0
Steering Angle	: 45.0

**Dig Safely. New York.**

Call Before You Dig  
Mark the Required Time  
Confirm Utility Responses  
Respect The Marks  
Dig with Care  
800-962-7962  
www.digsafelyny.com

ORIGINAL SCALE IN INCHES

ALL RIGHTS RESERVED. COPY OR REPRODUCTION OF THIS DRAWING OR DOCUMENT OR ANY PORTION THEREOF WITHOUT THE WRITTEN PERMISSION OF CHAZEN ENGINEERING AND SURVEYING, A LANDSCAPE ARCHITECTURE CO. P.C. IS STRICTLY PROHIBITED. THIS DRAWING OR DOCUMENT IS NOT INTENDED OR PRESENTED TO BE SUITABLE FOR ANY PURPOSE OTHER THAN THAT FOR WHICH IT WAS DESIGNED. ANY MODIFICATION OF THIS DRAWING OR DOCUMENT OR ANY PART THEREOF FOR WHICH IS NOT SPECIFICALLY NOTED HEREON SHALL BE AT USER'S SOLE RISK AND WITHOUT LIABILITY TO CHAZEN ENGINEERING AND SURVEYING, A LANDSCAPE ARCHITECTURE CO. P.C.

IF IT IS A VIOLATION OF NEW YORK STATE EDUCATION LAW FOR ANY PERSON TO ALTER THIS DRAWING OR DOCUMENT IN ANY MANNER, HE OR SHE IS ACTING UNDER THE DIRECTION OF A LICENSED DESIGN PROFESSIONAL (PROFESSIONAL ENGINEER, LAND SURVEYOR, ARCHITECT OR LANDSCAPE ARCHITECT). IF THIS DRAWING OR DOCUMENT IS ALTERED, THE ALTERED DESIGN PROFESSIONAL SHALL AFFIX TO THE DRAWING OR DOCUMENT HIS OR HER SEAL, THE WORDS "ALTERED BY", FOLLOWED BY HIS OR HER SIGNATURE, THE DATE OF SUCH ALTERATION, AND A SPECIFIC DESCRIPTION OF THE ALTERATION.

**The Chazen Companies**  
Proud to be Employee Owned

Land Surveyors  
Planners  
Environmental & Safety Professionals  
Landscape Architects

**CHAZEN ENGINEERING, LAND SURVEYING**

Office Locations:

Delaware County Office: 21 1/2 St. Street Pittsford, New York 14881 Phone (516) 494-3367	North Country Office: 22 Elm Street (Suite 110) Glenn Falls, New York 12801 Phone (518) 812-0013	Southville Tennessee Office: 2415 21st Ave S. (Suite 103) Nashville, Tennessee 37212 Phone: (615) 380-1358
---	---	---

Digital District Office:  
114 New York Street  
White Plains, New York 10601  
Phone: (914) 997-8910

rev.	date	description
5	01/28/20	REVISED PER PLANNING BOARD COMMENTS
4	12/20/19	REVISED PER PLANNING BOARD COMMENTS
3	02/26/19	REVISED PER CITY COUNCIL COMMENTS
2	05/17/18	REVISED PER CITY COUNCIL COMMENTS
1	11/28/18	NEW SHEET ADDED TO SET

248 TIRONDA AVE., BEACON, N.Y.

**VEHICLE MANEUVERING PLAN**

CITY OF BEACON, DUTCHESS COUNTY, NEW YORK

designed	checked
09/16/18	11
scale	LAD
PROJECT NO.	81750.00
SHEET NO.	C200
	11 OF 17