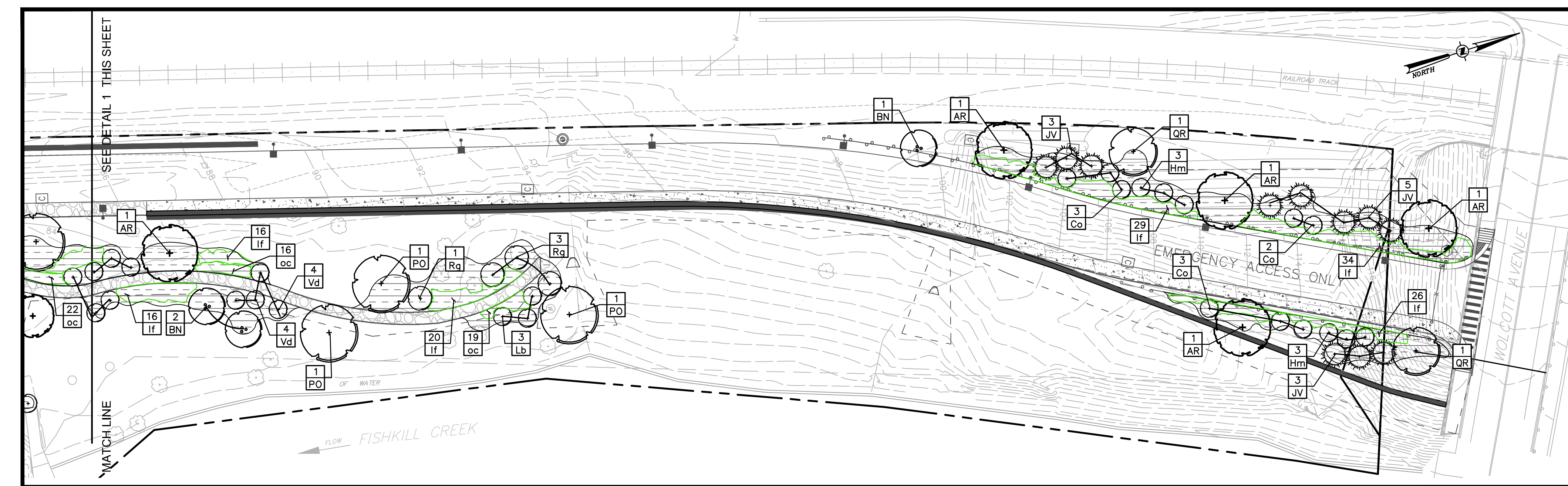
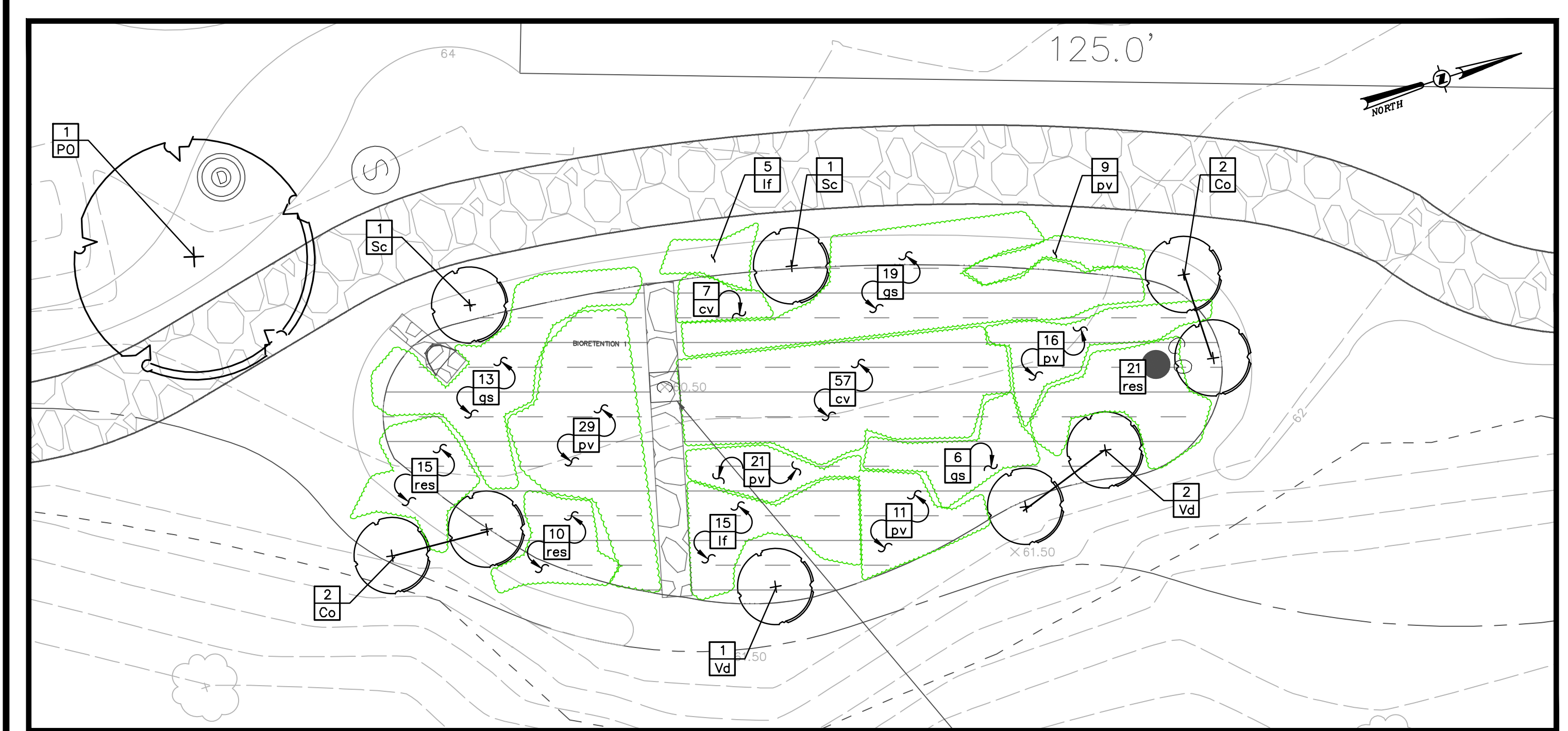


1 LANDSCAPE PLAN
SCALE: 1"=30'



2 LANDSCAPE PLAN-EMERGENCY ACCESS DRIVE
SCALE: 1"=30'



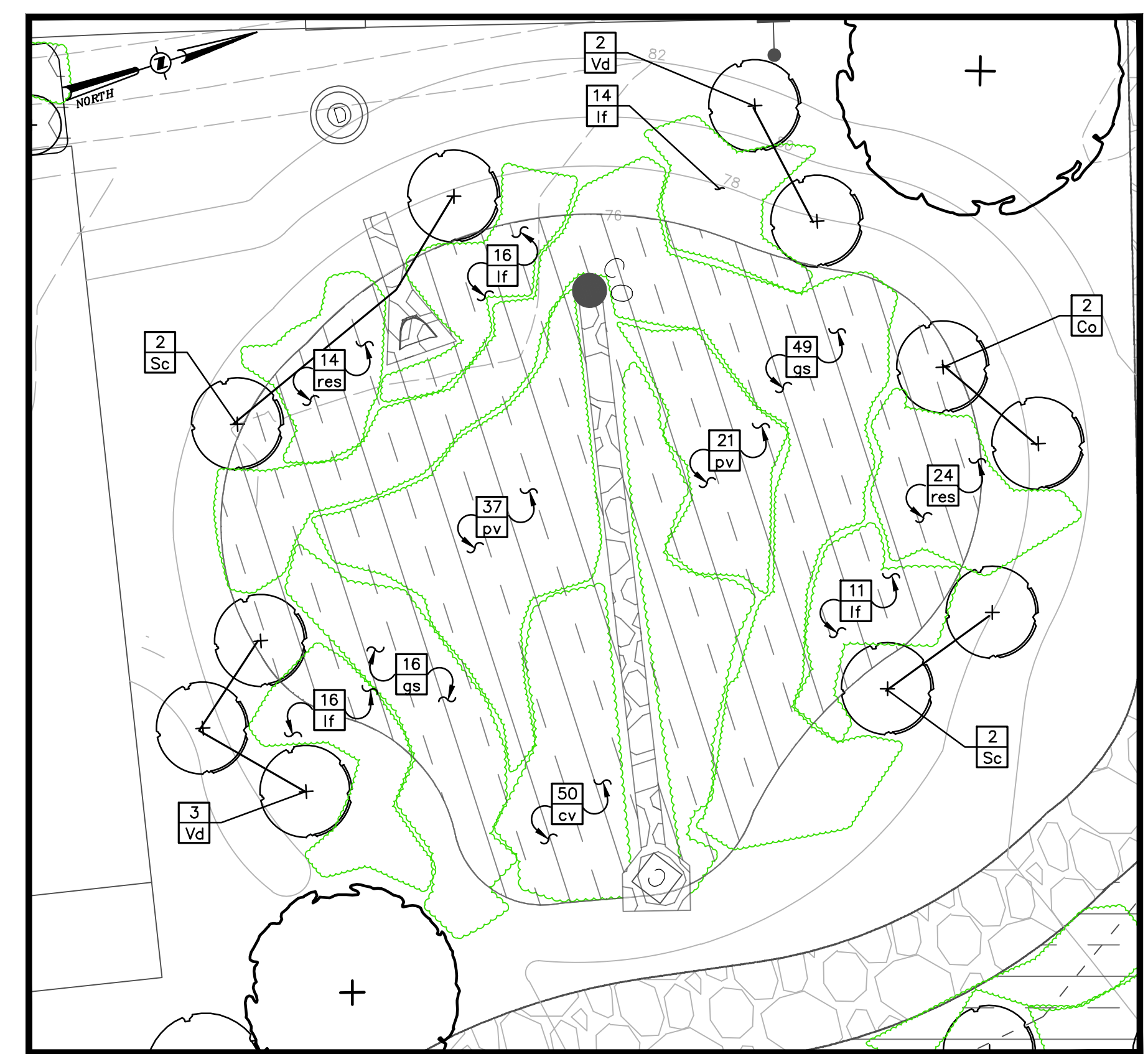
4 BIORETENTION AREA 1 PLANTING PLAN
SCALE: 1"=10'

QTY	ABRV	BOTANICAL NAME	COMMON NAME	SIZE	COND	SPACING	REMARKS
1	PO	Platanus occidentalis	American Sycamore	2 - 2.5' Cal	B&B	As Shown	
4	CO	Cornus sericea	Red-Osier Dogwood	30" - 36"	Cont.	As Shown	
3	VB	Viburnum dentatum	Arrowwood Viburnum	30" - 36"	Cont.	As Shown	
58	CV	Carex vulpinoidea	Fox Sedge	#1 Cont.	8" O.C.		
40	IF	Glyceria striata	Fool Nodding Grass	#1 Cont.	16"-18" O.C.		
20	IF	Luzula complanata	Brookside Deer-twitch	#1 Cont.	16"-18" O.C.		
72	PV	Panicum virgatum 'Shenandoah'	Shenandoah Switch Grass	#2 Cont.	2-3' O.C.		
46	RES	Rubus laciniatus	Cutleaf Cowwheat	#1 Cont.	18" O.C.		

5 BIORETENTION AREA 1 PLANT LIST
SCALE: NTS

QTY	ABRV	BOTANICAL NAME	COMMON NAME	SIZE	COND	SPACING	REMARKS
9	AR	Acer rubrum 'October Glory'	October Glory Red Maple	3" Cal.	B&B	As Shown	
10	BN	Betula nigra	River Birch	8"-10' Clump	B&B	As Shown	Multi-Stem Clump
2	LT	Lindodendron tulipifera	Tuliptree	3" Cal.	B&B	As Shown	
38	JV	Juniperus virginiana	Eastern Red Cedar	8"-10'	B&B	As Shown	
10	GT	Gleditsia triacanthos 'cutliver'	Honeylocust	3" Cal.	B&B	As Shown	Fall Digging Hazard
8	NS	Nyssa sylvatica	Sour Gum	3" Cal.	B&B	As Shown	Fall Digging Hazard
5	PA	Platanus x acerifolia 'Bloodgood'	Bloodgood London Planetree	3" Cal.	B&B	As Shown	
7	PO	Platanus occidentalis	American Sycamore	2 - 2.5' Cal	B&B	As Shown	
14	PT	Prunus pennsylvanica	Yoshino Cherry	3" Cal.	B&B	As Shown	
4	QR	Quercus rubra borealis	Northern Red Oak	3" Cal.	B&B	As Shown	Fall Digging Hazard
2	QB	Quercus bicolor	Swamp White Oak	3" Cal.	B&B	As Shown	Fall Digging Hazard
5	TC	Tilia cordata 'Greenspire'	Greenspire Linden	3" Cal.	B&B	As Shown	Fall Digging Hazard
3	AM	Amelanchier canadensis	Servicberry	30"-36"	Cont.	As Shown	
63	CI	Comptonia peregrina	Sweet Fern	#3 Cont.	As Shown		
6	CM	Cornus sericea	Red-Osier Dogwood	30"-36"	Cont.	As Shown	
20	CO	Cornus sericea	Red-Osier Dogwood	30"-36"	Cont.	As Shown	
35	CA	Cornus sanguinea 'Cato'	Arctic Sun Dogwood	18"-24"	Cont.	As Shown	
12	WH	Wikstroemia virginiana	Wikstroemia	3" - 4"	Cont.	As Shown	
13	KI	Kalmia latifolia	Mountain Laurel	30"-36"	Cont.	As Shown	
3	LB	Lindera benzoin	Spicebush	36"	Cont.	As Shown	
26	RG	Rhus typhina 'Laciniata'	Cutleaf Staghorn Sumac	36"	Cont.	As Shown	
35	SP	Spiraea x burbankii 'Gold Flame'	Gold Flame Spirea	36"	Cont.	As Shown	
13	VB	Viburnum acerifolium	Mapleleaf Viburnum	24"-30"	Cont.	As Shown	
24	VB	Viburnum dentatum	Darlington Viburnum	30"-36"	Cont.	As Shown	
18	XV	Vex verticillata 'Winter Red'	Winter Red Winterberry	18"-24"	Cont.	As Shown	
374	CV	Carex vulpinoidea	Fox Sedge	#1 Cont.	8" O.C.		
314	IF	Glyceria striata	Fool Nodding Grass	#1 Cont.	16"-18" O.C.		
707	OC	Luzula complanata	Brookside Deer-twitch	#2 Cont.	2-3' O.C.		
453	PV	Panicum virgatum 'Shenandoah'	Shenandoah Switch Grass	#2 Cont.	2-3' O.C.		
133	RES	Rubus laciniatus	Cutleaf Cowwheat	#1 Cont.	18" O.C.		

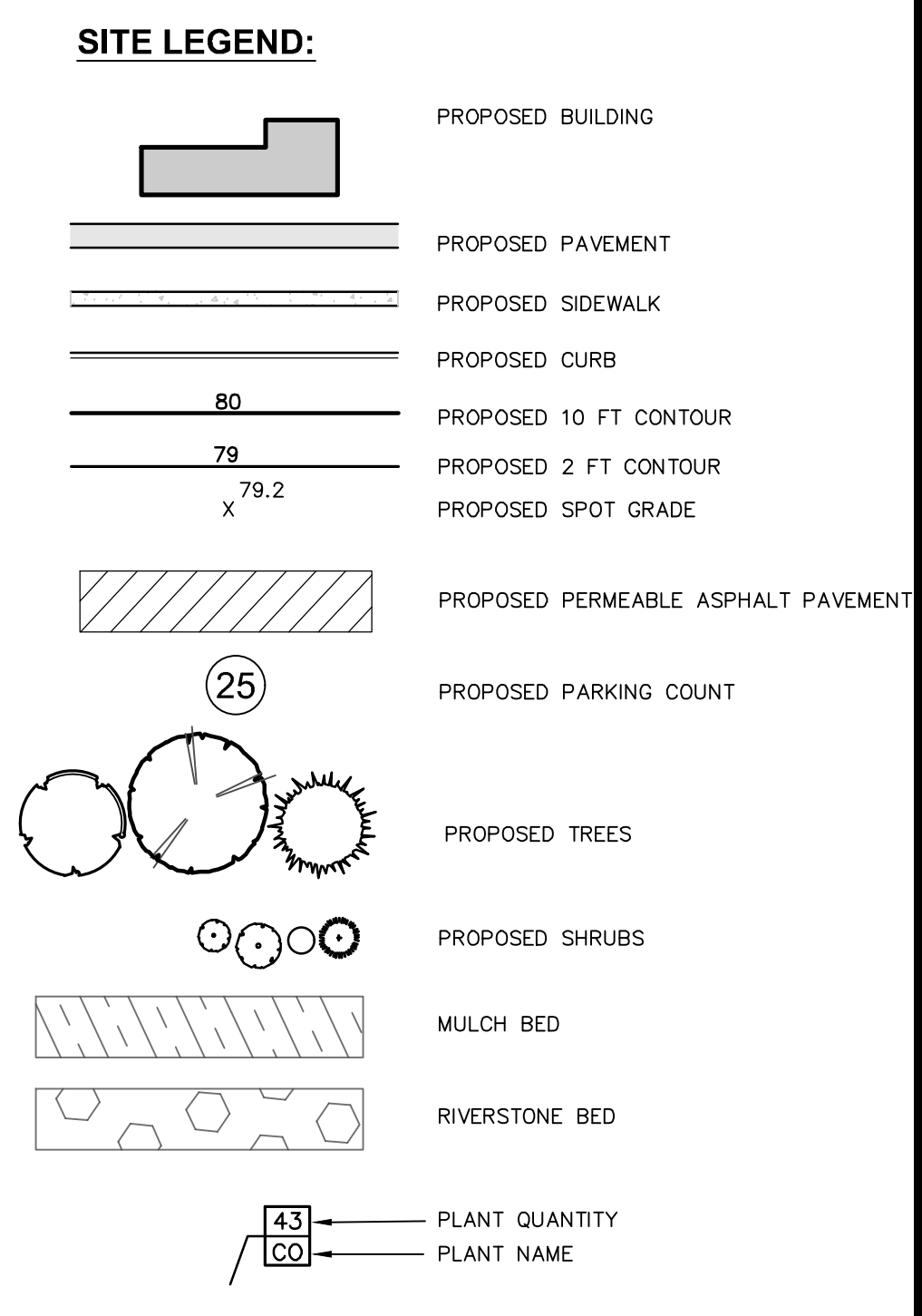
3 OVERALL PLANT LIST
SCALE: NTS



6 BIORETENTION AREA 2 PLANTING PLAN
SCALE: 1"=10'

QTY	ABRV	BOTANICAL NAME	COMMON NAME	SIZE	COND	SPACING	REMARKS
1	NS	Nyssa sylvatica	Sour Gum	2"-3" Cal.	B&B	As Shown	Fall Digging Hazard
2	CO	Cornus sericea	Red-Osier Dogwood	30"-36"	Cont.	As Shown	
4	SC	Sambucus canadensis	Black Elderberry	12" - 18"	Cont.	As Shown	
5	VB	Viburnum dentatum	Arrowwood Viburnum	30" - 36"	Cont.	As Shown	
51	CV	Carex vulpinoidea	Fox Sedge	#1 Cont.	8" O.C.		
67	IF	Glyceria striata	Fool Nodding Grass	#1 Cont.	16"-18" O.C.		
58	IF	Luzula complanata	Brookside Deer-twitch	#1 Cont.	16"-18" O.C.		
72	PV	Panicum virgatum 'Shenandoah'	Shenandoah Switch Grass	#2 Cont.	2-3' O.C.		
42	RES	Rubus laciniatus	Cutleaf Cowwheat	#1 Cont.	18" O.C.		

7 BIORETENTION AREA 2 PLANT LIST
SCALE: NTS



SOIL RESTORATION NOTES:

- APPLY THREE INCHES OF COMPOST OVER SOIL. COMPOST SHALL BE SEED, FROM PLANT DERIVED MATERIALS, FREE OF VISIBLE WEED SEEDS. HAVE NO VISIBLE FREE WATER OR MUST BE PRODUCED WHEN HANDLING PASS THROUGH A HALF INCH SCREEN AND HAVE A PH SUITABLE TO GROW DESIRED PLANTS.
 - TILL COMPOST INTO THE SUBSOIL TO A DEPTH OF AT LEAST 12-INCHES USING A CAT-MOUNTED RIPPER, TRACTOR MOUNTED DISC, OR TILLER, MIXING AND CIRCULATING AIR AND COMPOST INTO SUB-SOILS.
 - ROCK-POCK UNTIL UNLIFTED STONE/ROCK MATERIALS OF FOUR INCHES AND LARGER SIZE ARE CLEANED OFF THE SITE.
 - APPLY TOPSOIL TO A DEPTH OF SIX INCHES.
- NOTES:
- BROADCAST DENSITY, MULCHING, AND FIRST & SECOND SEASON MAINTENANCE TO MATCH MANUFACTURER'S RECOMMENDATIONS TO ESTABLISH PROPER ESTABLISHMENT.
 - OWNER TO FOLLOW GROWING SEASON MAINTENANCE RECOMMENDATIONS AFTER 1 YEAR TO ACHIEVE PROPER ESTABLISHMENT. CONTRACTOR TO INSTALL A 3"-4" SPADE CUT EDGE AT ALL LAWN/MULCH INTERFACES.
 - CONTRACTOR TO REGULARLY STAKE OUT AREA FOR OWNER APPROVAL. PRIOR TO GROWING AND MULCHING.
 - ALL AREAS DISTURBED AS A RESULT OF CONSTRUCTION ACTIVITIES WHICH ARE NOT OTHERWISE CALLED OUT AS HARDSCAPE OR LANDSCAPE PLANTING AREAS SHALL BE HYDRO-SEEDING TO ESTABLISH LAWN PER LANDSCAPING NOTES.