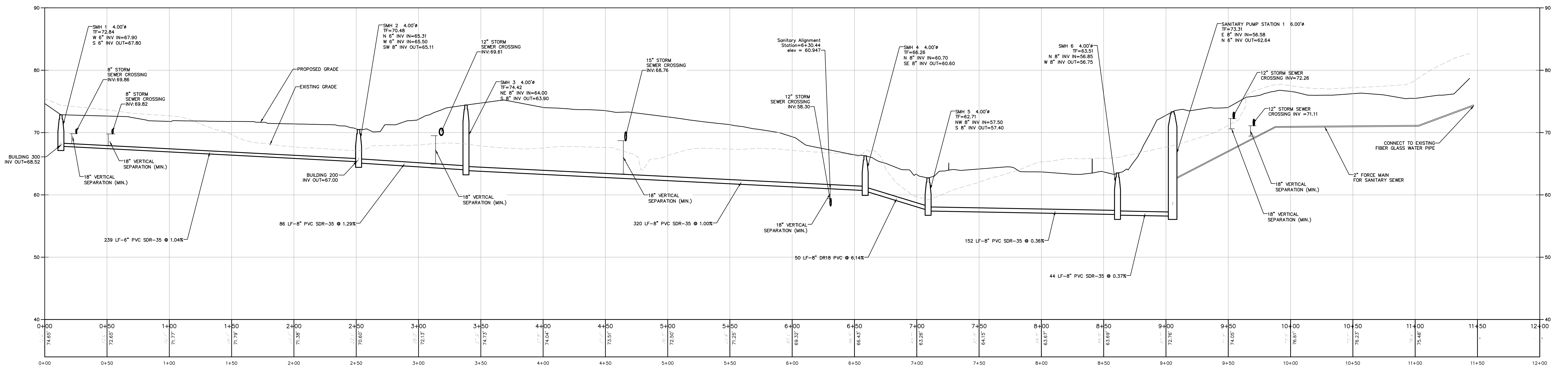


**1 WATERMAIN PROFILE**  
 SCALE: SCALE-H=1"=50'  
 SCALE-V=1"=10'



**2 SANITARY PROFILE**  
 SCALE: SCALE-H=1"=50'  
 SCALE-V=1"=10'

**Safe Dig**  
 Call Before You Dig  
 Mark the Required Time  
 Confirm Safety Response  
 Request The Marks  
 Dig with Care  
**800-962-7962**  
 www.safeinyork.com

ALL RIGHTS RESERVED. COPY OR REPRODUCTION OF THIS DRAWING OR DOCUMENT OR ANY PORTION THEREOF WITHOUT THE EXPRESS WRITTEN PERMISSION OF CHAZEN ENGINEERING AND SURVEYING & LANDSCAPE ARCHITECTURE CO., D.P.C. IS PROHIBITED. THIS DRAWING OR DOCUMENT IS NOT INTENDED OR REPRESENTED TO BE SUITABLE FOR ANY PURPOSE OTHER THAN THAT FOR WHICH IT WAS DESIGNED AND FOR WHICH IT IS SPECIFICALLY INTENDED. ANY MODIFICATION OF THIS DRAWING OR DOCUMENT OR ANY PORTION THEREOF WITHOUT THE WRITTEN PERMISSION OF CHAZEN ENGINEERING AND SURVEYING & LANDSCAPE ARCHITECTURE CO., D.P.C. SHALL BE AT USER'S SOLE RISK AND WITHOUT LIABILITY TO CHAZEN ENGINEERING AND SURVEYING & LANDSCAPE ARCHITECTURE CO., D.P.C.

IT IS A VIOLATION OF NEW YORK STATE EDUCATION LAW FOR ANY PERSON TO ALTER THIS DRAWING OR DOCUMENT IN ANY MANNER UNLESS HE OR SHE IS ACTING UNDER THE DIRECTION OF A LICENSED DESIGN PROFESSIONAL (PROFESSIONAL ENGINEER, LAND SURVEYOR, ARCHITECT OR LANDSCAPE ARCHITECT). IF THIS DRAWING OR DOCUMENT IS ALTERED, THE ALTERED DESIGN PROFESSIONAL SHALL AFFIX TO THE DRAWING OR DOCUMENT HIS OR HER SEAL, THE WORDS "ALTERED BY" FOLLOWED BY HIS OR HER SIGNATURE, THE DATE OF SUCH ALTERATION, AND A SPECIFIC DESCRIPTION OF THE ALTERATION.

**Chazen Companies**  
 Environmental & Safety Professionals  
 Landscape Architects

**CHAZEN ENGINEERING, LAND SURVEYING & LANDSCAPE ARCHITECTURE CO., D.P.C.**

**Office Locations:**  
 Dutchess County Office: 21 Elm Street, Poughkeepsie, New York 12601, Phone: (845) 484-3300  
 North Country Office: 20 Elm Street, Suite 110, Glens Falls, New York 12801, Phone: (518) 812-0013  
 Nashville Tennessee Office: 2415 21st Ave S, Suite 1033, Nashville, Tennessee 37212, Phone: (615) 380-1358  
 Worcester NY Office: 1 North Broadway, Suite 803, White Plains, New York 10601, Phone: (914) 997-8500  
 Chattanooga Tennessee Office: 437 S. 8th St, Suite 203, Chattanooga, Tennessee 37403, Phone: (423) 241-6275

REV.	DATE	DESCRIPTION
2	09/28/20	REVISED PER PLANNING BOARD COMMENTS
1	12/20/19	REVISED PER PLANNING BOARD COMMENTS

248 TIORONDA AVE., BEACON, N.Y.  
**UTILITY PROFILES**  
 CITY OF BEACON, DUTCHESS COUNTY, NEW YORK

Designed: ASB  
 Checked: LAD  
 Date: 09/10/18 AS SHOWN  
 Project No.: 81750.00  
 Sheet No.:  
**C161**  
 of 17