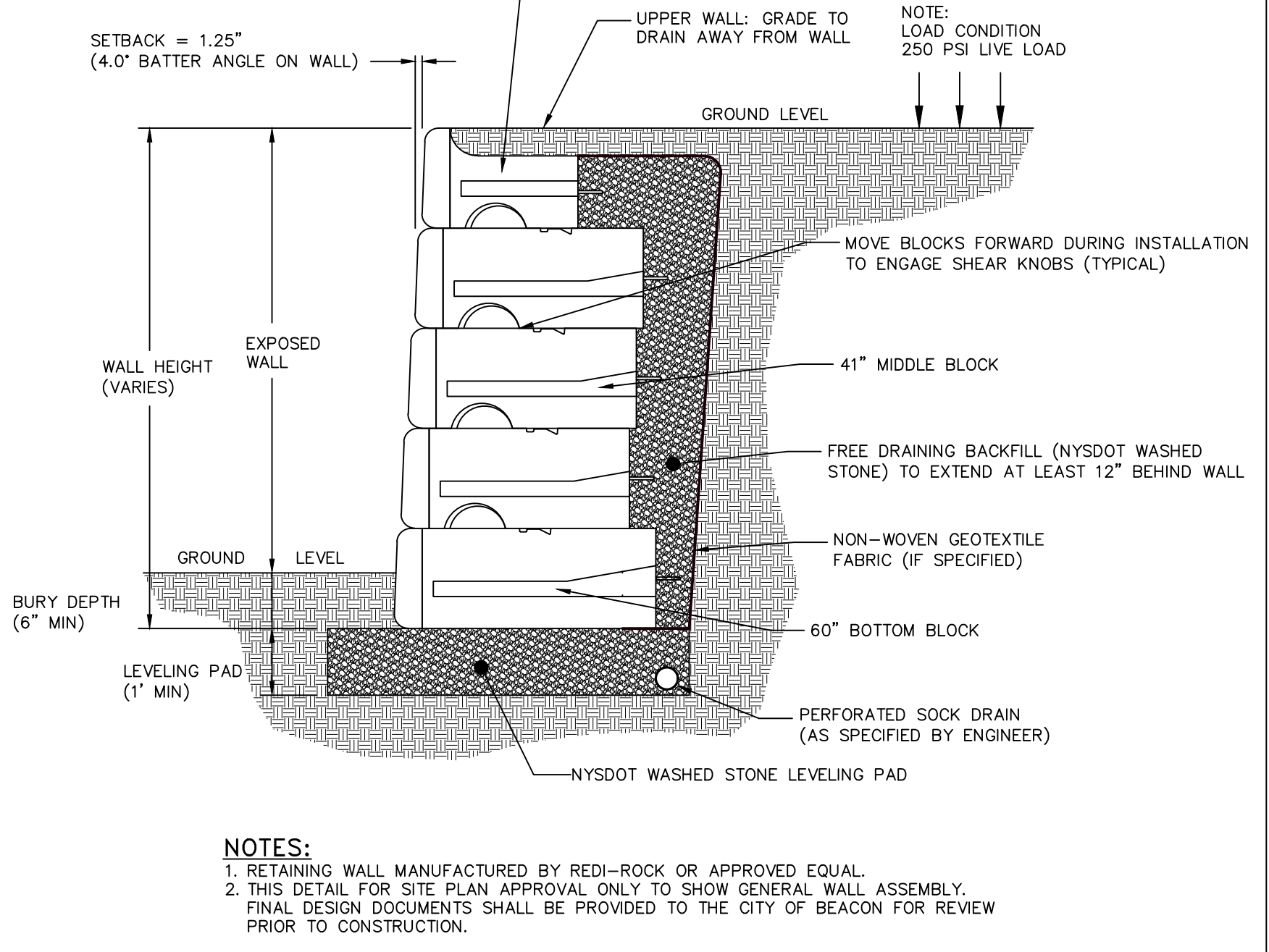
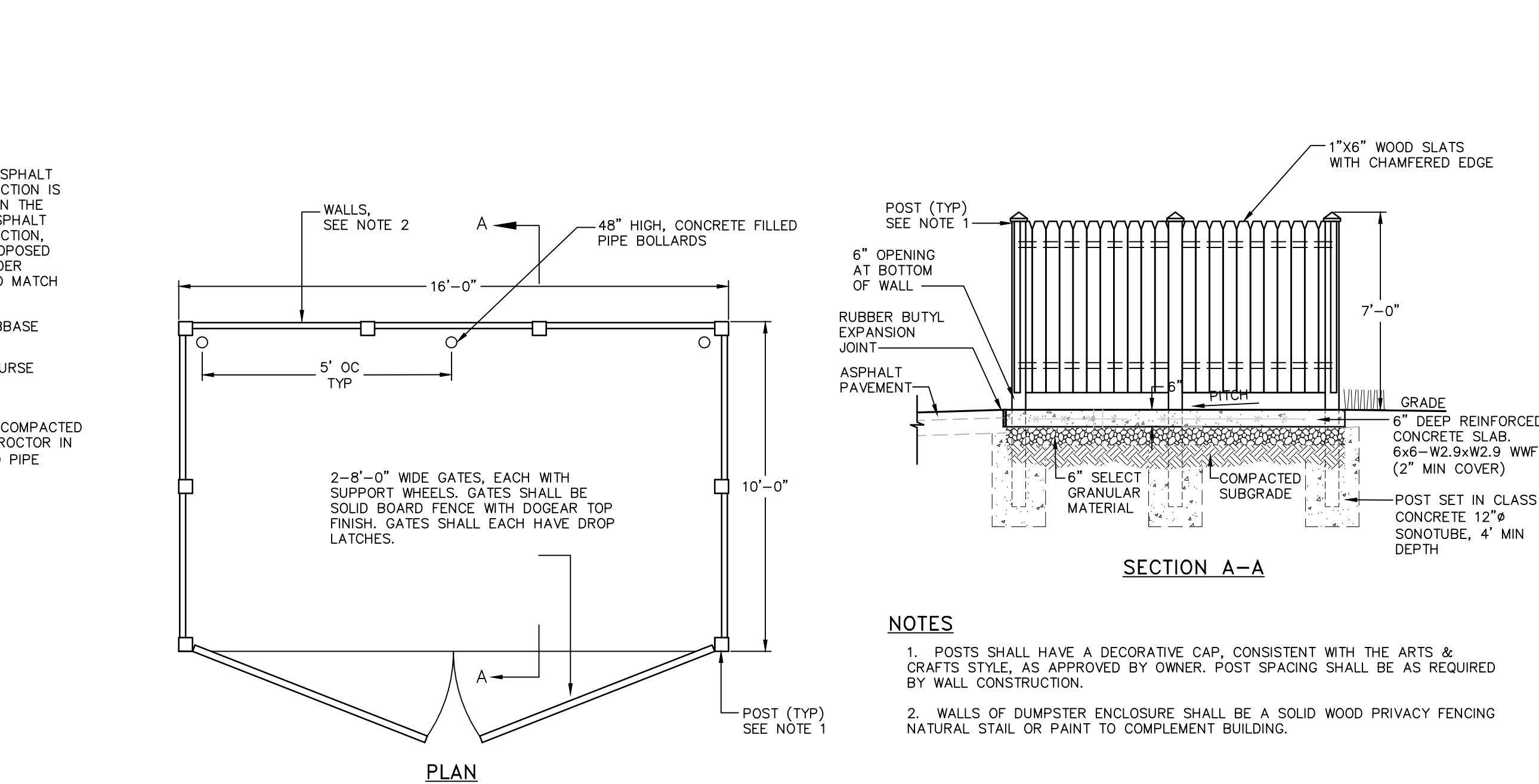
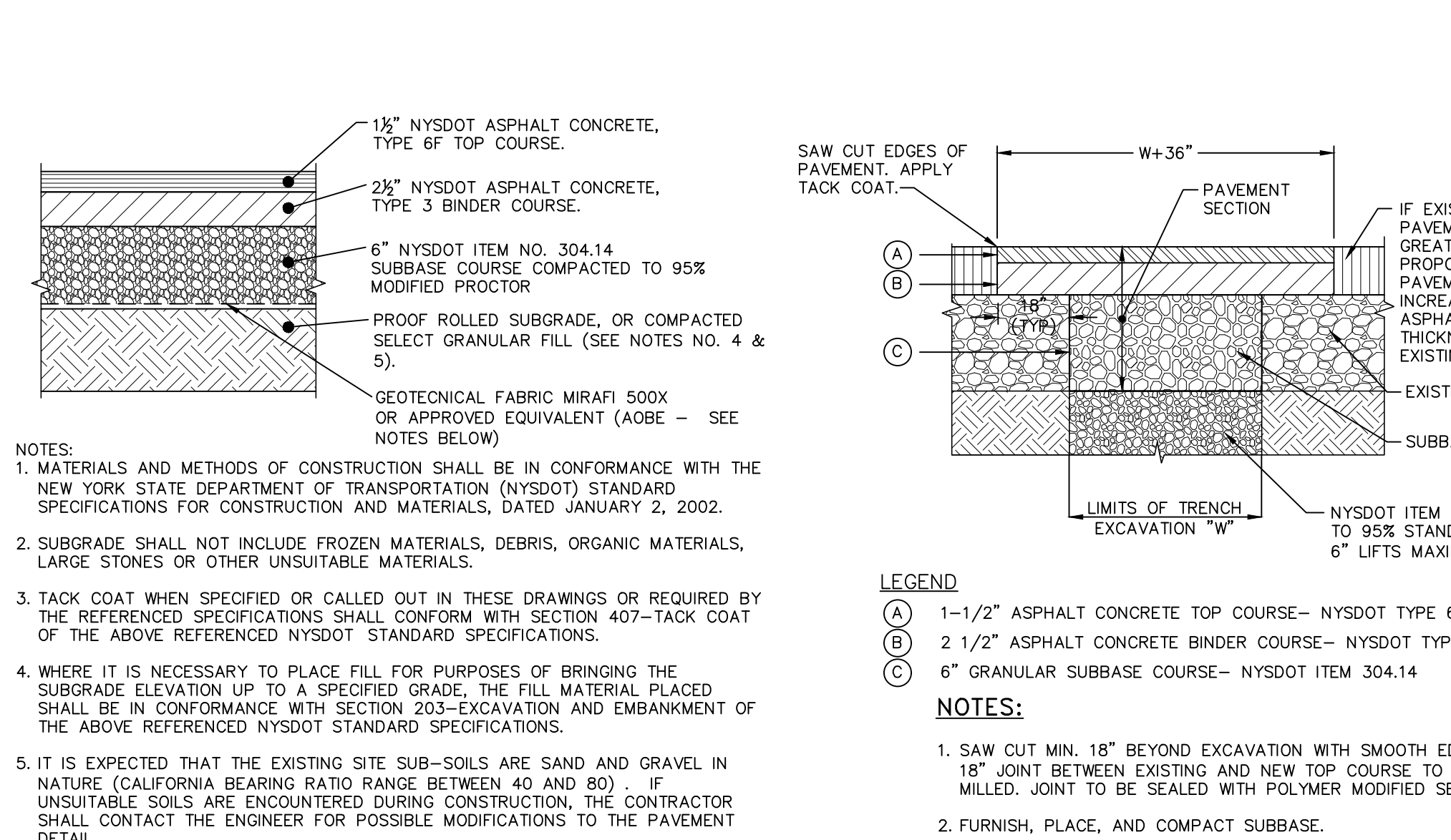
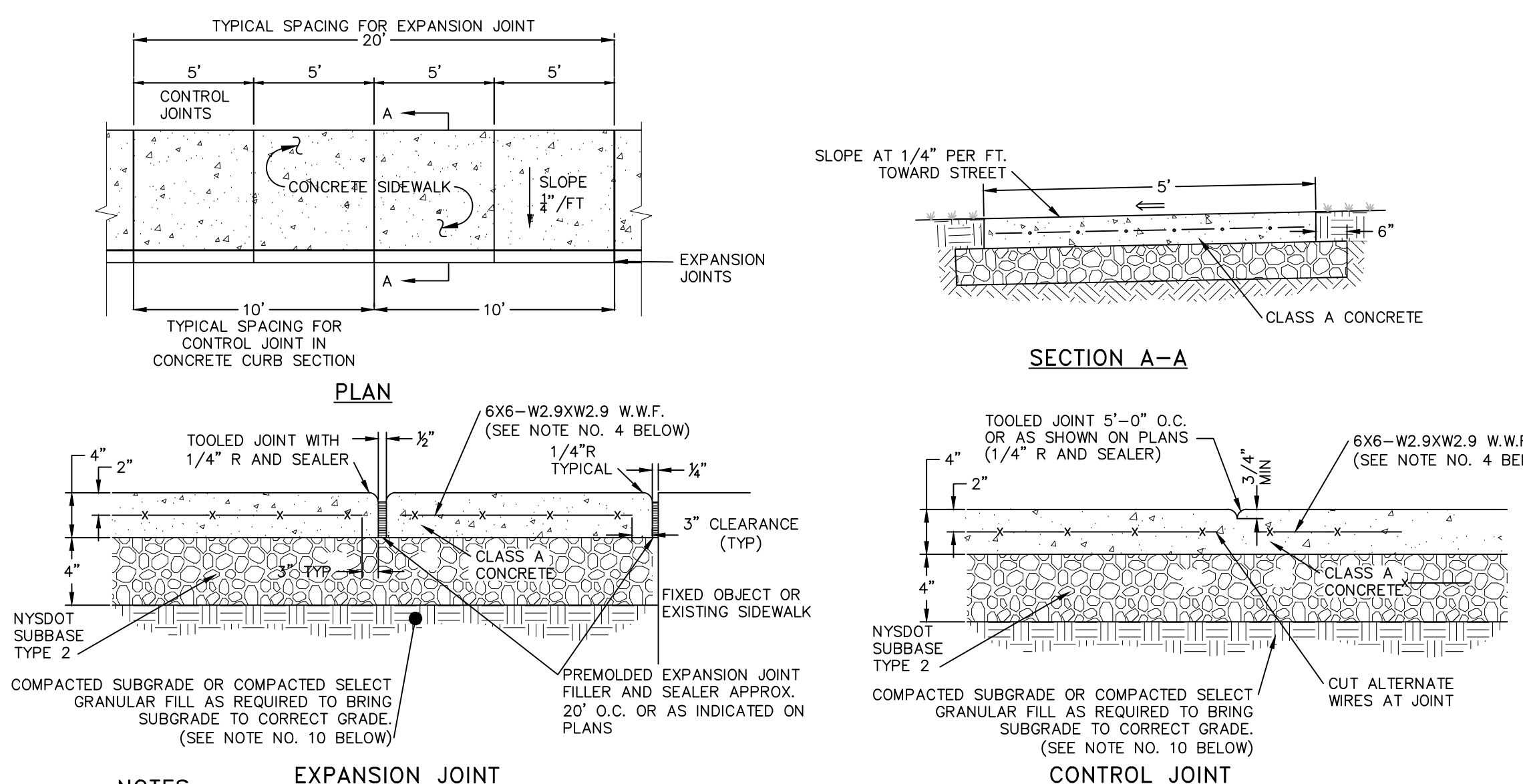


SITE DETAILS



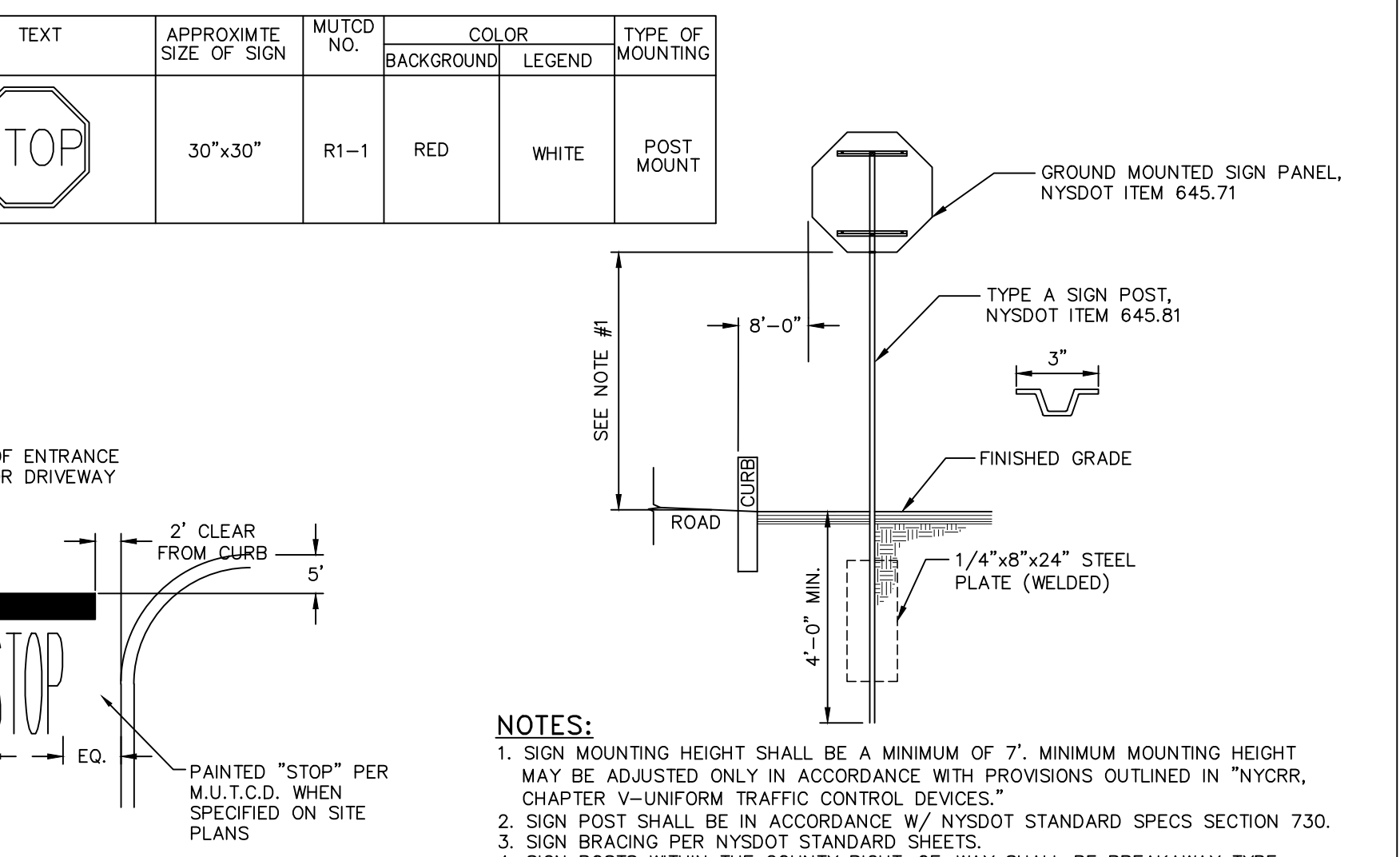
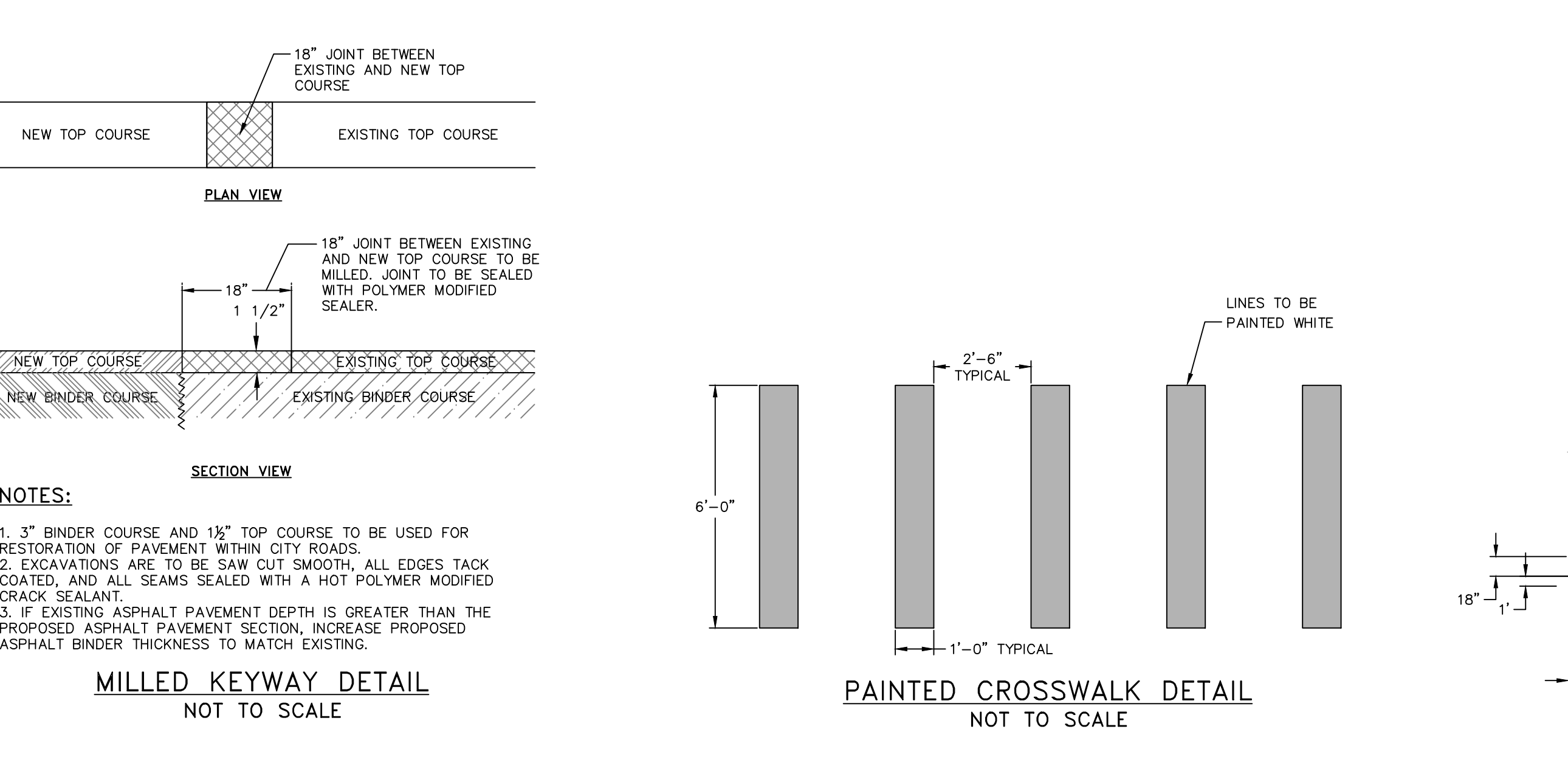
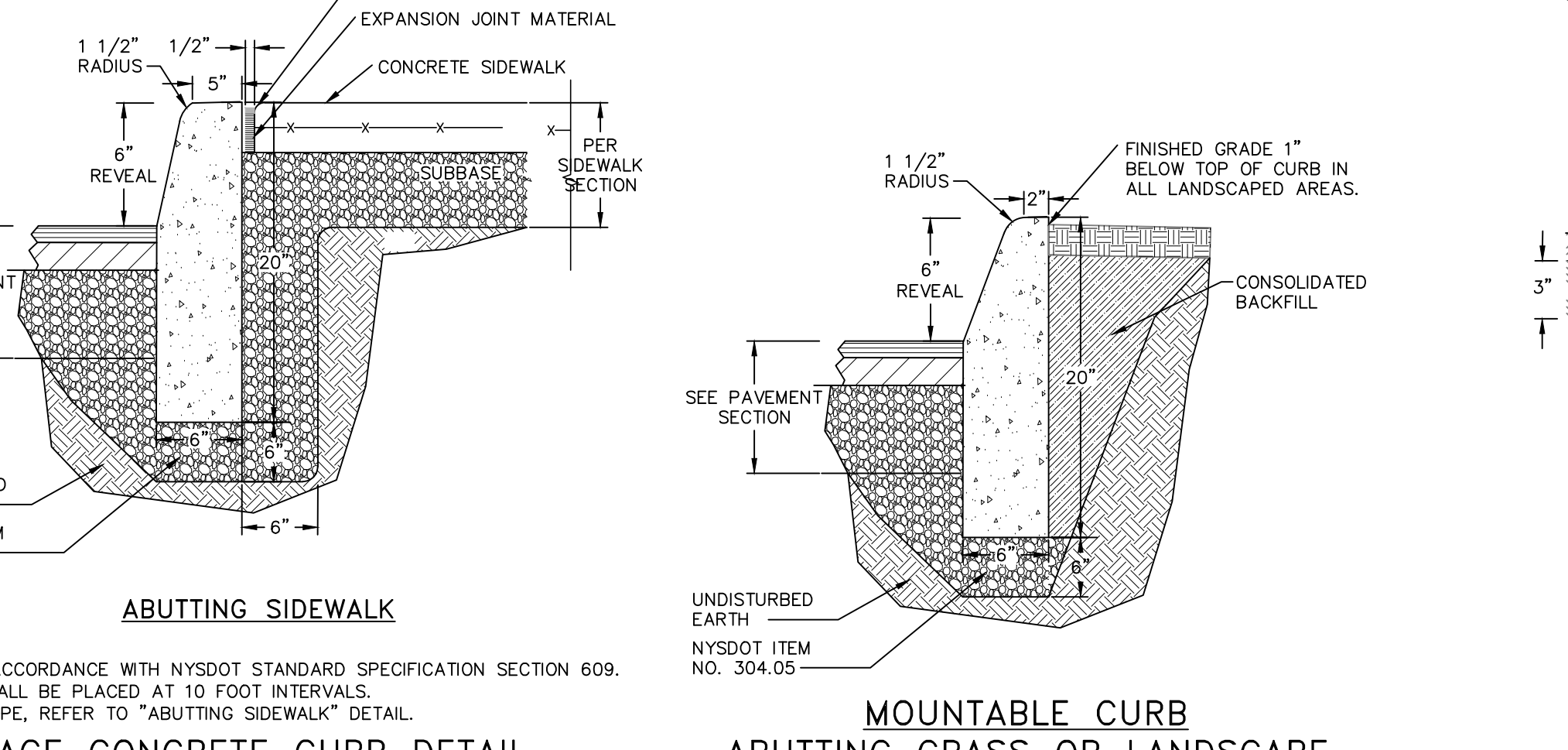
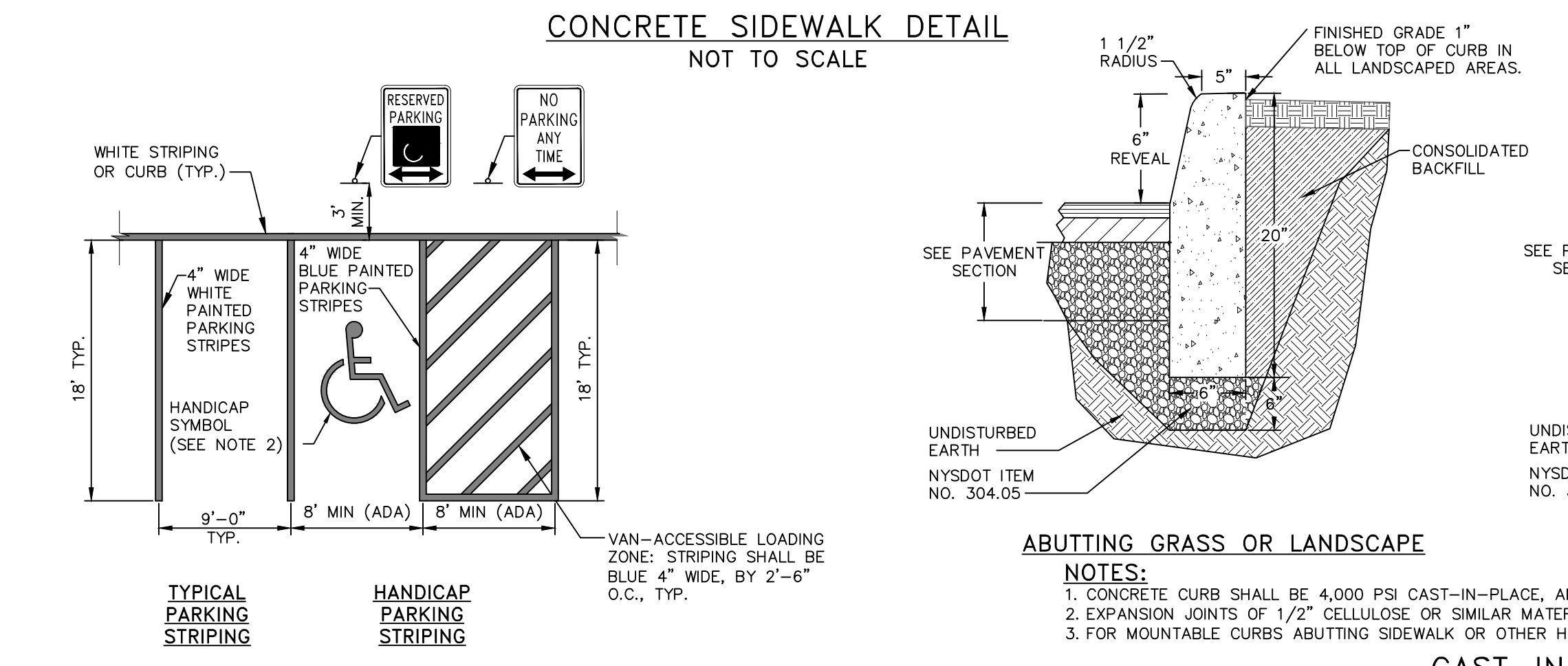
NOTES:

- 10' SPACING OF CONTROL JOINTS SHALL BE USED FOR CAST IN PLACE CONCRETE CURBS.
- MATERIAL AND METHODS OF CONSTRUCTION SHALL BE IN CONFORMANCE WITH THE NEW YORK STATE DEPARTMENT OF TRANSPORTATION (NYSDOT) STANDARD SPECIFICATIONS FOR CONSTRUCTION AND MATERIALS, DATED JANUARY 2, 2002, AND ALL ADDENDA THERETO. THE ONLY EXCEPTION BEING THAT THE WORK OF THIS CONTRACT SHALL BE MEASURED IN ENGLISH UNITS.
- ALL CONCRETE SHALL BE 3000 PSI CLASS A CONCRETE. CONCRETE MATERIALS, PLACEMENT, AND CONSTRUCTION SHALL CONFORM WITH SECTION 500 OF THE ABOVE REFERENCED NYSDOT STANDARD SPECIFICATIONS.
- REINFORCED STEEL FOR CONCRETE SHALL CONFORM WITH SECTION 556 - REINFORCING STEEL FOR CONCRETE STRUCTURES OF THE ABOVE REFERENCED NYSDOT STANDARD SPECIFICATIONS AND AS SPECIFICALLY CALLED OUT IN THE DRAWINGS.
- ALL EXPOSED SURFACES SHALL HAVE A BRUSH TEXTURED FINISH.
- EXPANSION JOINTS SHALL BE LOCATED A MAXIMUM OF 20' ON CENTER, OR AS INDICATED ON PLANS.
- JOINTS SHALL NOT BE SAW CUT.
- EXPOSED CONCRETE SURFACES SHALL BE TREATED WITH "SUREBOND"/"SUREBOND" 98-7000 INTENSIFIER BRIGHT PROTECTOR AND SIDEWALK SEALER, OR EQUAL. RATE AND METHOD OF APPLICATION SHALL BE IN ACCORDANCE WITH MANUFACTURER'S RECOMMENDATIONS.
- SUBGRADE MATERIAL SHALL CONFORM WITH SECTION 304 OF THE ABOVE REFERENCED NYSDOT STANDARD SPECIFICATIONS.
- WHERE IT IS NECESSARY TO PLACE FILL FOR PURPOSES OF BRINGING THE SUBGRADE ELEVATION UP TO A SPECIFIED GRADE, THE FILL MATERIAL PLACED IN CONFORMANCE WITH SECTION 203-EXCAVATION AND EMBANKMENT OF THE ABOVE REFERENCED NYSDOT STANDARD SPECIFICATIONS.
- ALL WORK SHALL CONFORM WITH SECTION 608-SUBGRADE, DRIVEWAYS, AND BICYCLE PATHS OF THE ABOVE REFERENCED NYSDOT STANDARD SPECIFICATIONS.

PAVEMENT SECTION DETAIL NOT TO SCALE

TRASH ENCLOSURE DETAILS NOT TO SCALE

TYPICAL REDI-ROCK GRAVITY WALL FOR GREENWAY TRAIL NOT TO SCALE



NOTES:

1. ALL DIMENSIONS SUBJECT TO CURRENT MUNICIPALITY ZONING AND SITE REGULATIONS.
2. PAINTED HANDCAP SYMBOL TO BE IN ACCORDANCE WITH NYSDOT AND ADA STANDARDS.
3. IF PARKING ADULTS A SIDEWALK, THEN THE REGULATORY SIGNS SHALL BE PLACED BEHIND THE SIDEWALK.

NOTES:

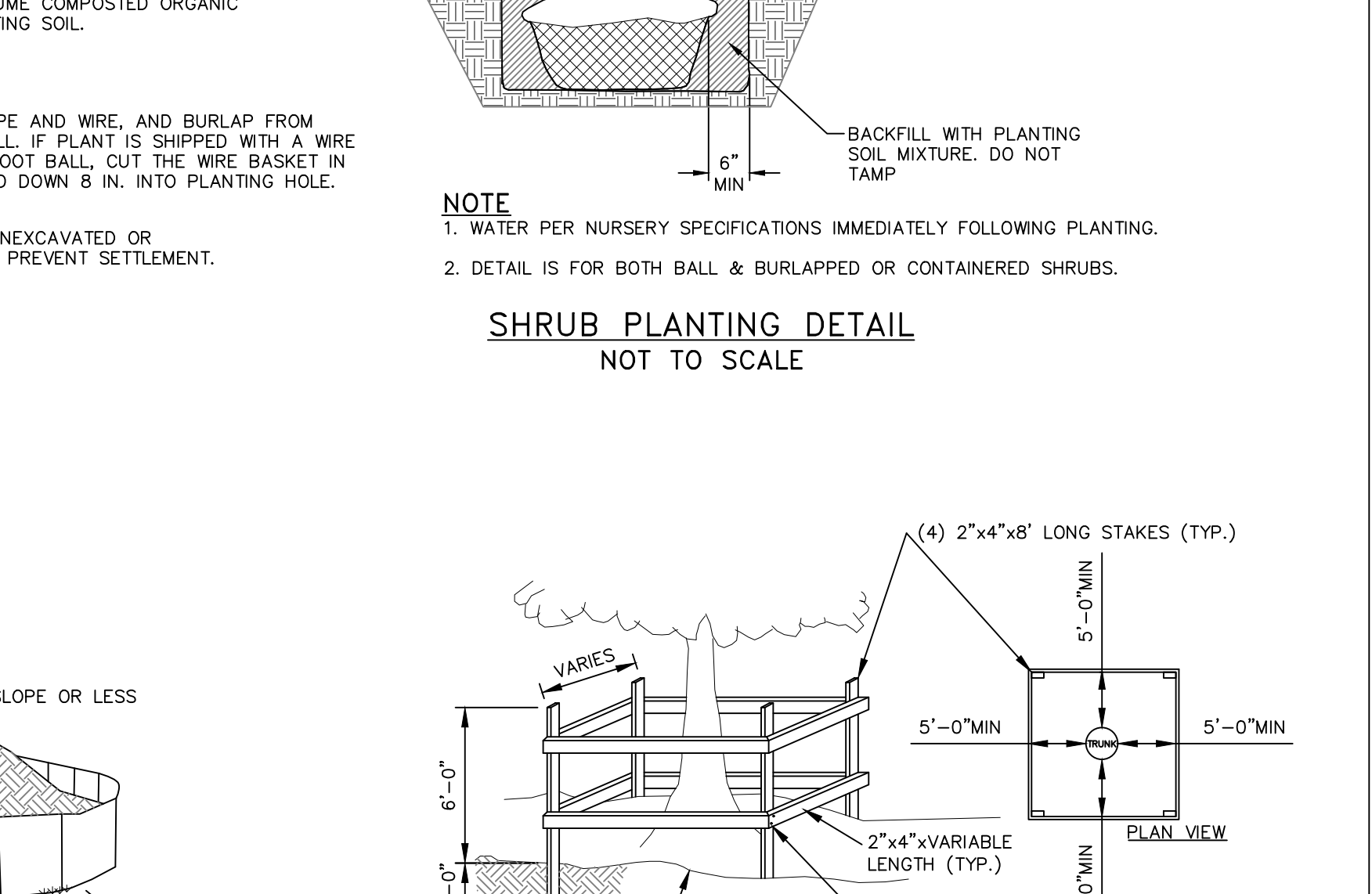
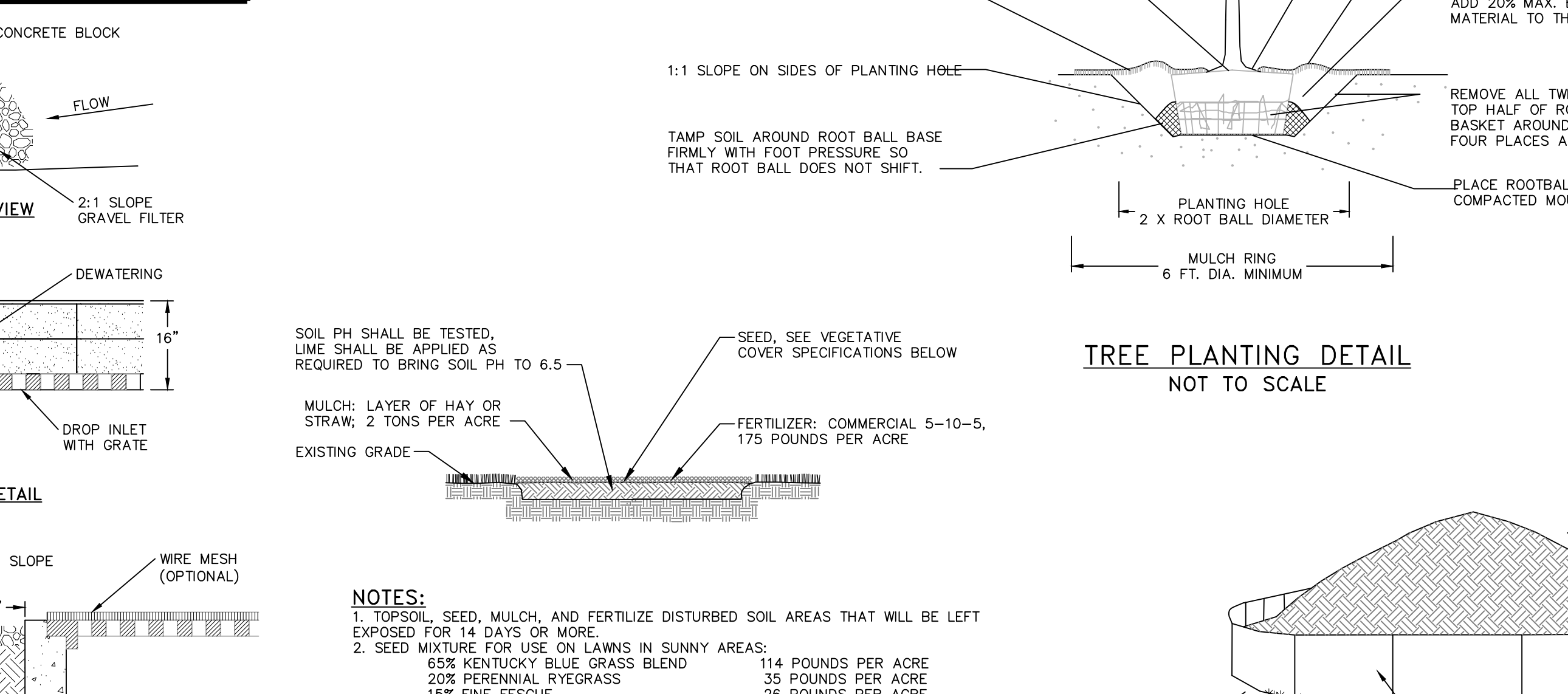
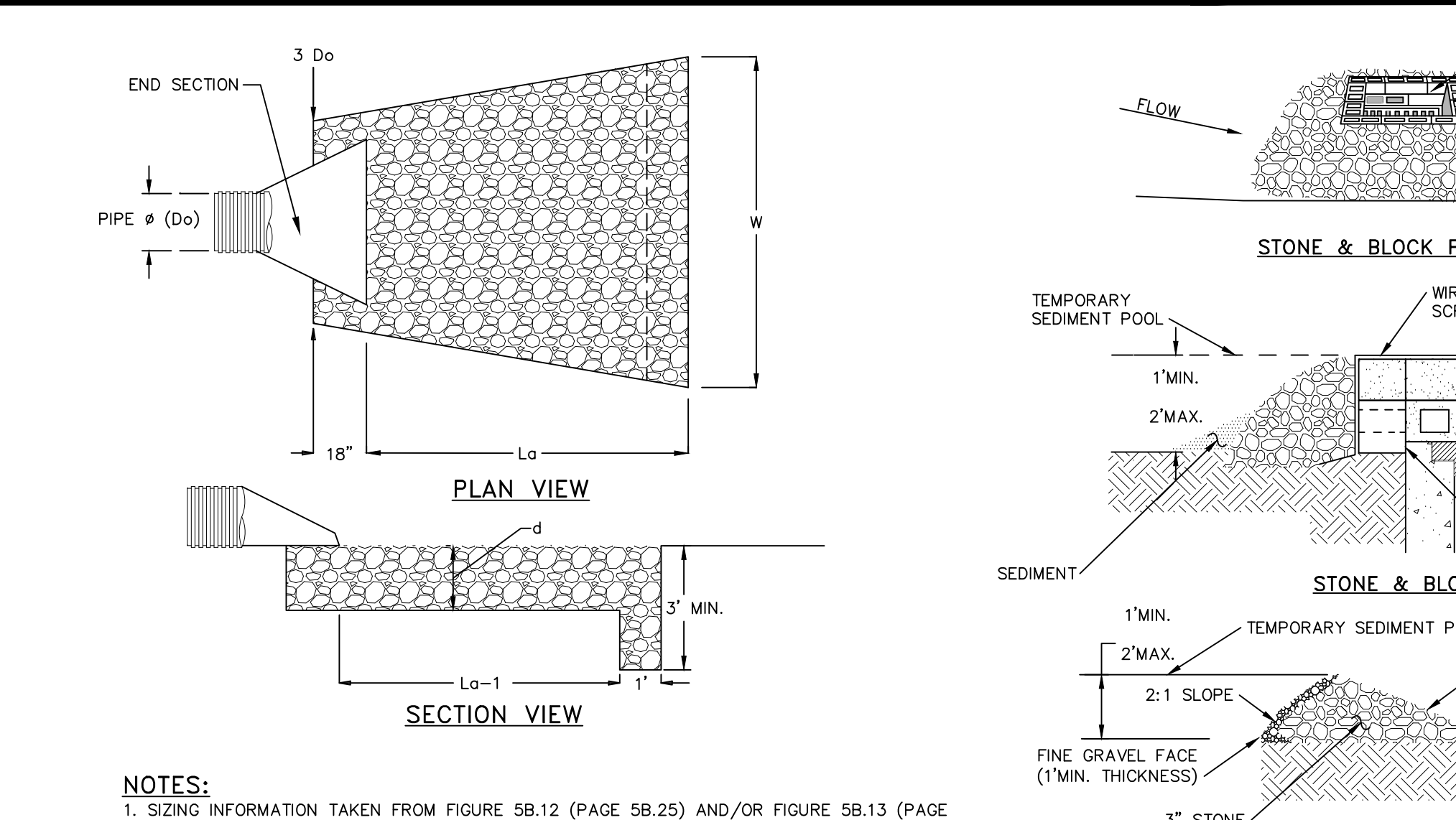
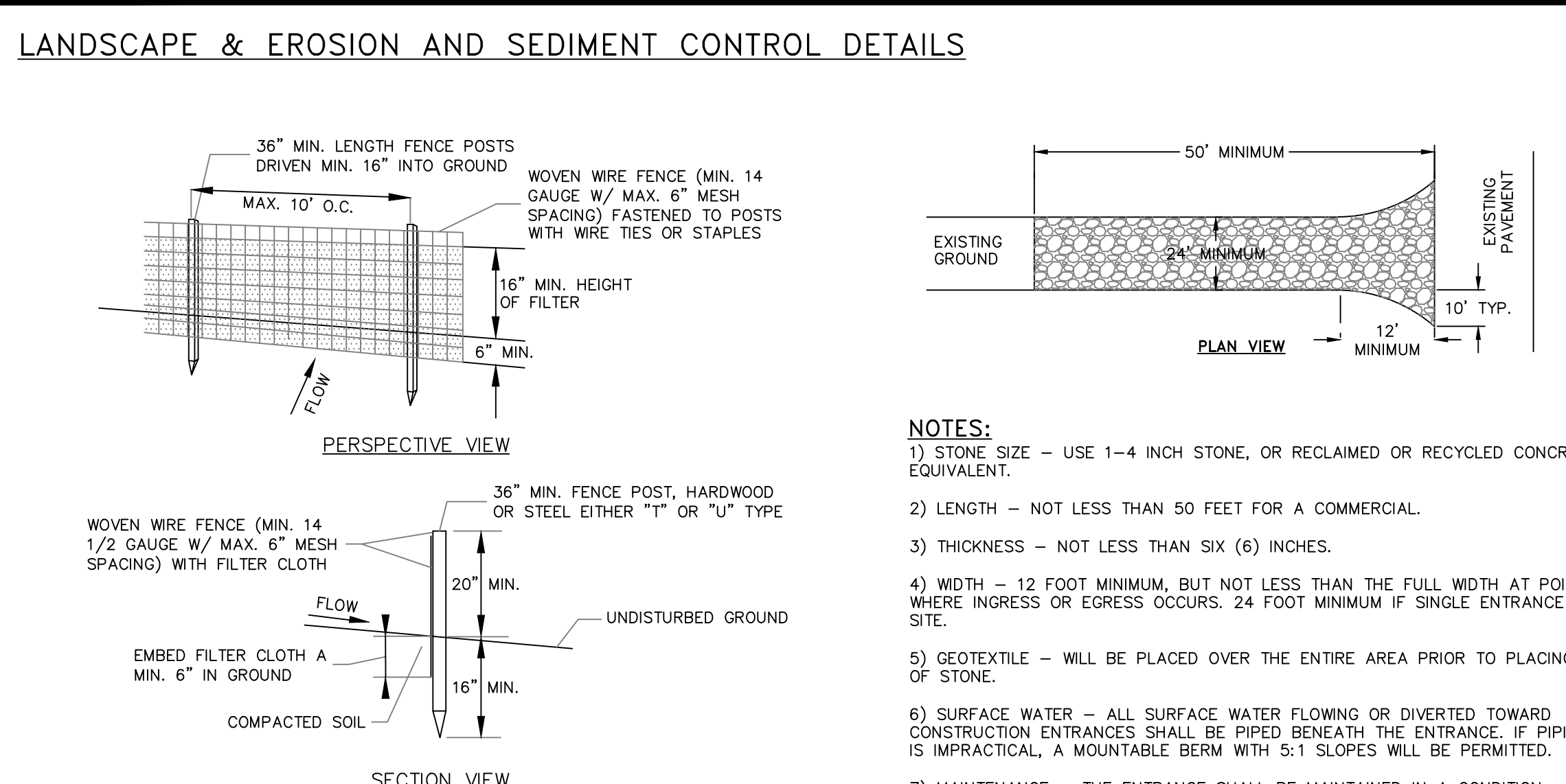
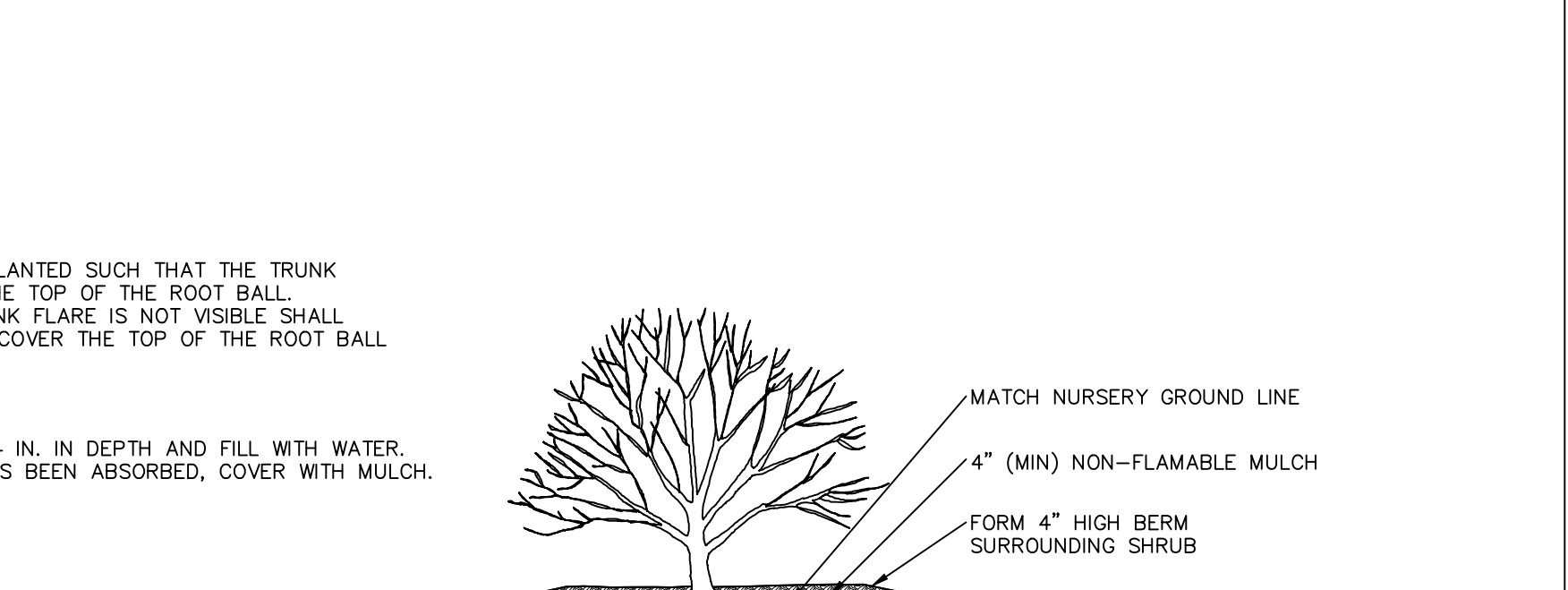
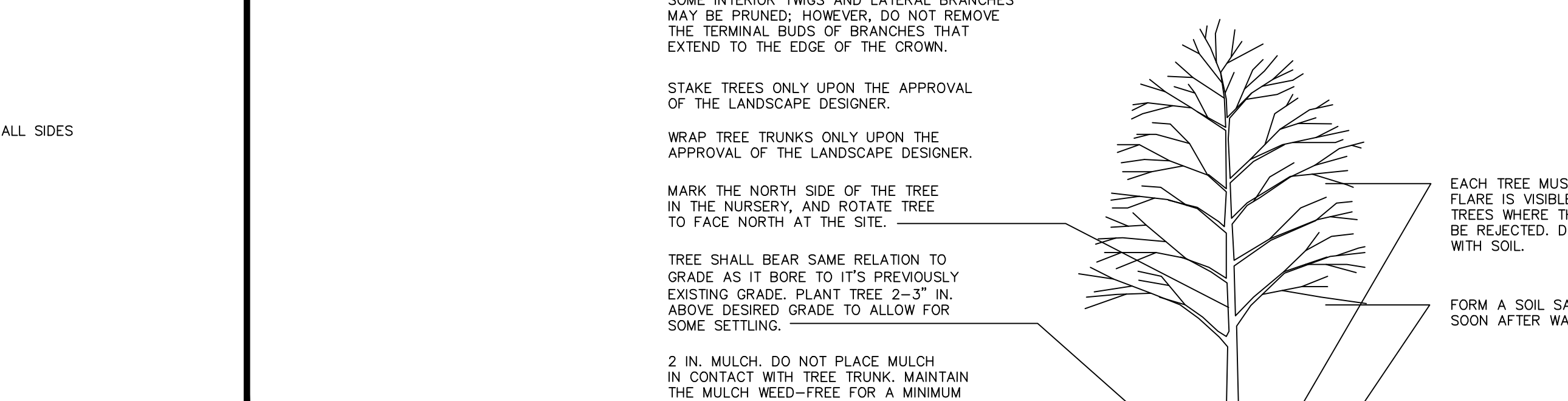
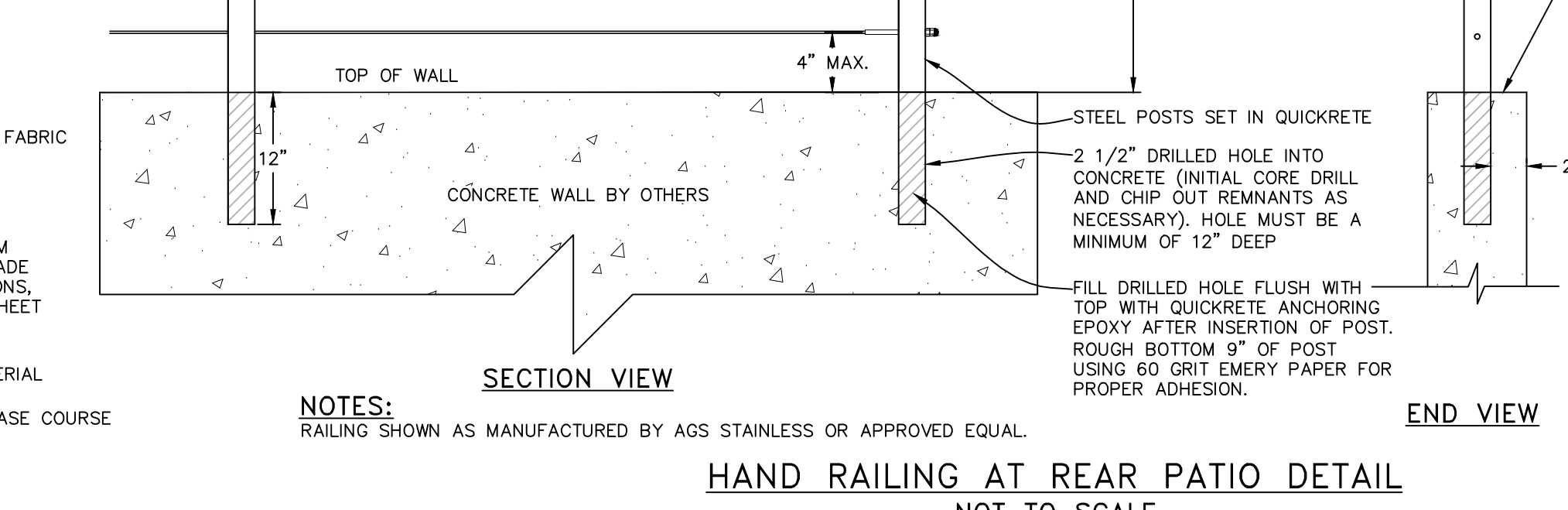
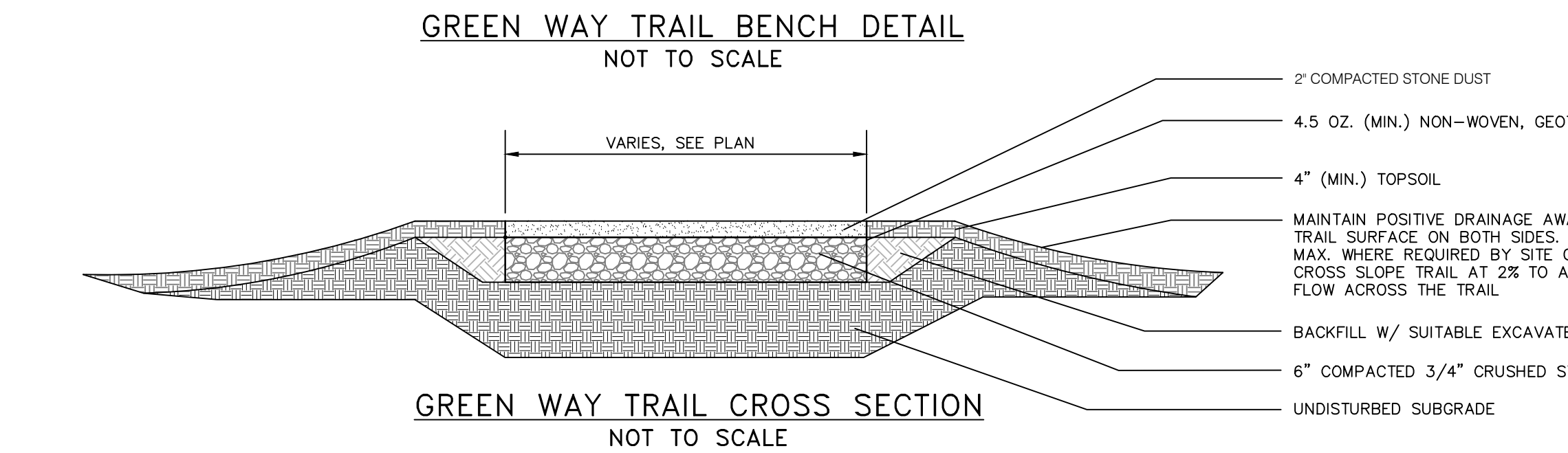
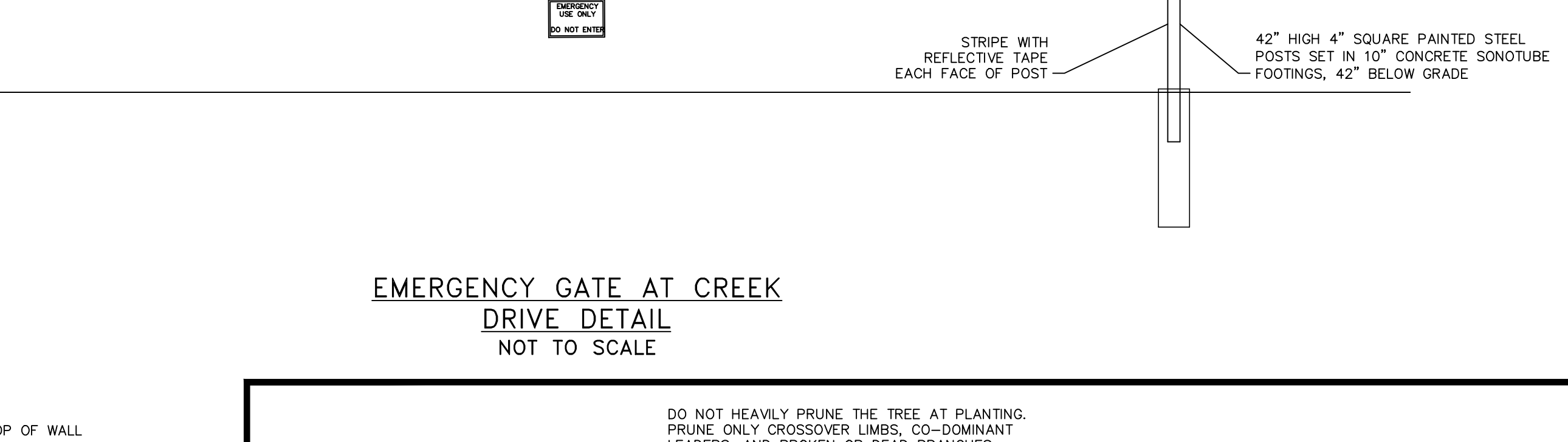
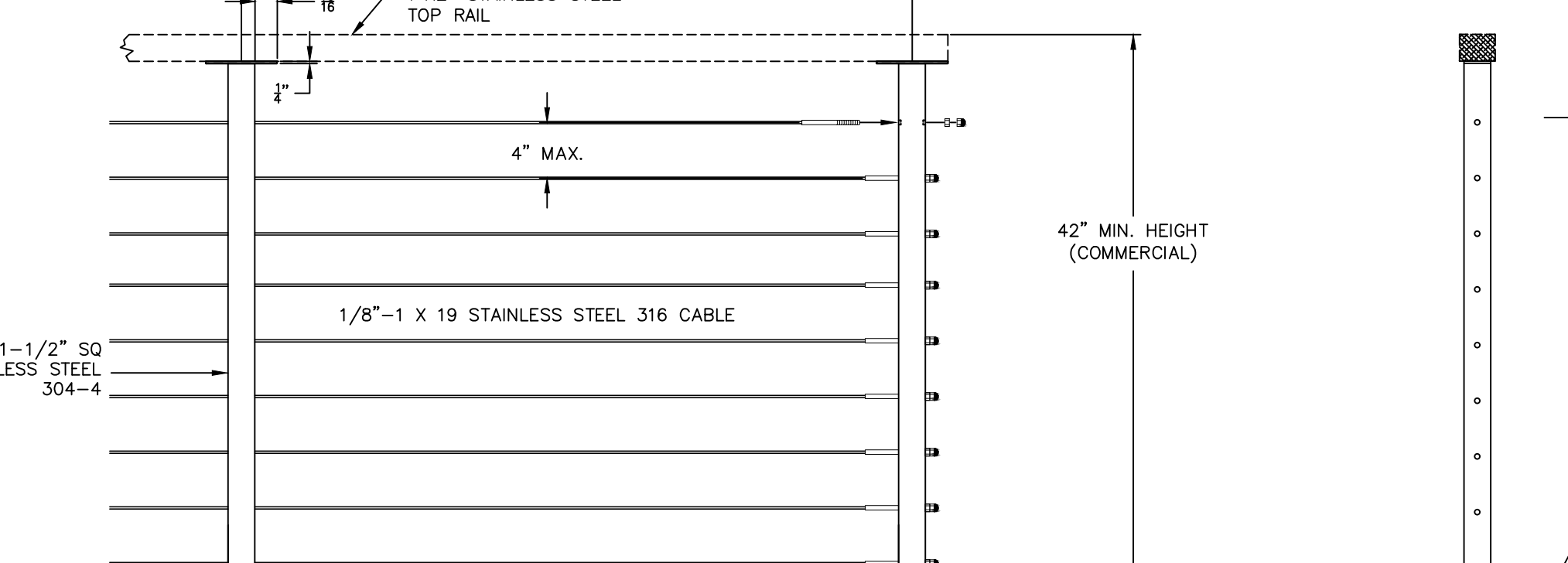
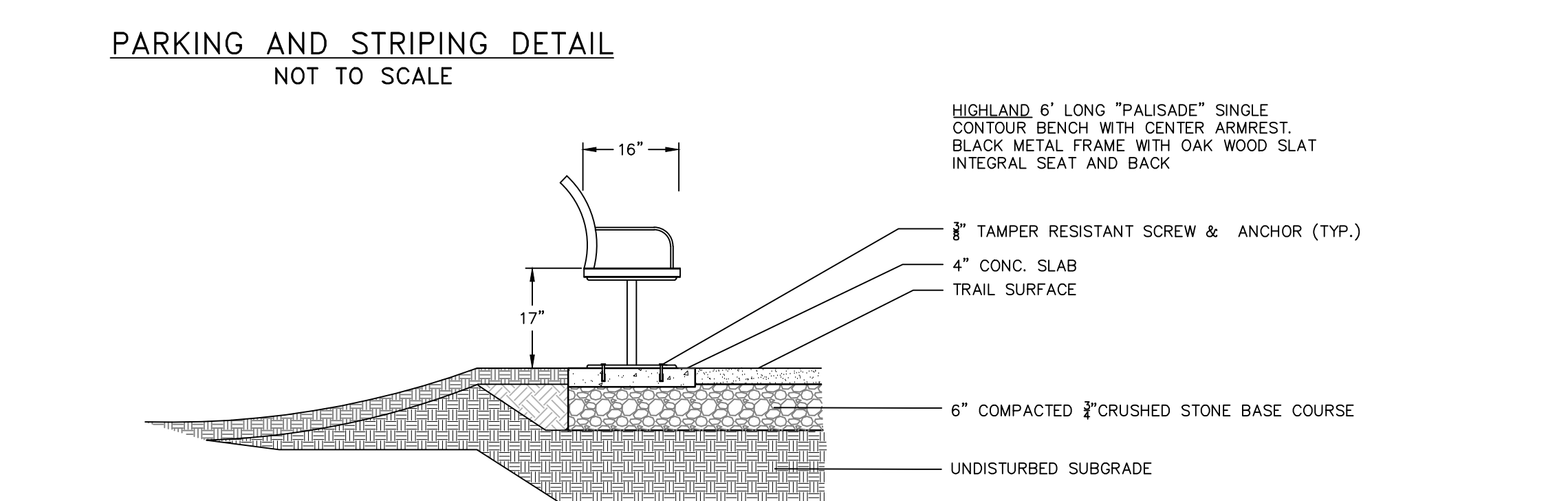
1. CONCRETE CURB SHALL BE 4000 PSI CAST-IN-PLACE, AND IN ACCORDANCE WITH NYSDOT STANDARD SPECIFICATION SECTION 608.
2. EXPANSION JOINTS OF 1/2" CELLULOSE OR SIMILAR MATERIAL SHALL BE PLACED AT 10' FOOT INTERVALS.
3. FOR MOUNTABLE CURBS ABUTTING SIDEWALK OR OTHER HARDSCAPE, REFER TO "ABUTTING SIDEWALK" DETAIL.

NOTES:

1. 3" BINDER COURSE AND 1 1/2" TOP COURSE TO BE USED FOR RESTORATION OF PAVEMENT WITHIN CITY ROADS.
2. EXCAVATIONS ARE TO BE SAW CUT SMOOTH. ALL EDGES TACK COATED, AND ALL SEAMS SEALED WITH A HOT POLYMER MODIFIED GRADE SEALANT.
3. IF EXISTING ASPHALT PAVEMENT DEPTH IS GREATER THAN THE PROPOSED ASPHALT PAVEMENT SECTION, INCREASE PROPOSED ASPHALT BINDER THICKNESS TO MATCH EXISTING.

NOTES:

1. SIGN MOUNTING HEIGHT SHALL BE A MINIMUM OF 7'. MINIMUM MOUNTING HEIGHT MAY BE ADJUSTED ONLY IN ACCORDANCE WITH PROVISIONS OUTLINED IN "NYSDOT CHAPTER V - UNIFORM TRAFFIC CONTROL DEVICES".
2. SIGN POST SHALL BE IN ACCORDANCE WITH NYSDOT STANDARD SECTION 730.
3. SIGN BRACING PER NYSDOT STANDARD SHEETS.
4. SIGN POSTS WITH THE COUNTRY RIGHT-OF-WAY SHALL BE BREAKAWAY TYPE MEETING THE REQUIREMENTS OF THE NYSDOT.



NOTES:

1. FILTER CLOTH TO BE FASTENED SECURELY TO WOVEN WIRE FENCE WITH TIES SPACING EVERY 24" AT MAX 20" SECTION.
2. WHEN TWO SECTIONS OF FILTER CLOTH ADJOIN EACH OTHER THEY SHALL BE OVERLAPPED BY SIX INCHES AND FOLDED. FILTER CLOTH SHALL BE EITHER FILTER W, MIRAF 100X, STABILINKA 1140N OR APPROVED EQUIV.
3. PREFABRICATED UNITS SHALL BE GEOTEXTILE OR APPROVED EQUIV.
4. MAINTENANCE SHALL BE PERFORMED AS NECESSARY AND MATERIAL REMOVED WHEN "BULGES" DEVELOP IN THE SILT FENCE.

NOTES:

1. SIZING INFORMATION TAKEN FROM FIGURE 5B.12 (PAGE 5B.25) AND/OR FIGURE 5B.13 (PAGE 5B.26) OF THE NEW YORK STANDARDS AND SPECIFICATIONS FOR EROSION AND SEDIMENT CONTROL, 2016 EDITION.
2. RIPRAP SHALL BE COMPOSED OF A WELL-GRADED MIXTURE OF STONE SIZE SO THAT SIZE OF THE LARGEST STONE SHALL BE LARGER, BY WEIGHT, THAN THE SPECIFIED #50. THE LARGEST STONE SIZE SHALL BE 1.5 TIMES #50.
3. THE MINIMUM THICKNESS OF THE RIPRAP LAYER SHALL BE 1.5 TIMES THE MAXIMUM STONE SIZE FOR #50 OR 15 INCHES OR LESS, AND 1.2 TIMES THE MAXIMUM STONE SIZE FOR #60 GREATER THAN 15 INCHES.
4. A LAYER OF FILTER FABRIC (THICKNESS 20-60 MILS, GRAB STRENGTH 90-120 LBS.) SHALL CONFORM TO ASTM D-1777 AND ASTM D-1863 SHALL BE PLACED BETWEEN THE RIPRAP AND THE UNDERLYING SOIL SURFACE. FILTER FABRIC SHALL HAVE A MINIMUM 1" OVERLAP AT ALL SEAMS.

NOTES:

1. TOPSOIL, SEED, MULCH, AND FERTILIZER DISTURBED SOIL AREAS THAT WILL BE LEFT EXPOSED FOR 14 DAYS OR MORE.
2. SEED MIXTURE FOR USE ON LAWNS IN SUNNY AREAS: 65% KENTUCKY BLUEGRASS BLEND, 20% PERENNIAL RYEGRASS, 15% FINE FESCUE.
3. SEED MIXTURE FOR USE IN SHADY AREAS: 80% BLENDED SHADE TOLERANT KENTUCKY BLUEGRASS, 20% FINE FESCUE.
4. SEED BETWEEN APRIL 1ST AND MAY 15TH OR AUGUST 15TH AND OCTOBER 15TH. SEEDING MAY OCCUR BETWEEN MAY 15TH AND AUGUST 15TH IF ADEQUATE IRRIGATION IS PROVIDED.
5. TOPSOIL SHALL HAVE AT LEAST 6% BY WEIGHT OF FINE TEXTURED STABLE ORGANIC MATERIAL, AND NO GREATER THAN 20% TOPSOIL SHALL HAVE NOT LESS THAN 20% FINE TEXTURED MATERIAL (PASSING THE NO. 200 SIEVE) AND NOT MORE THAN 15% CLAY.

NOTES:

1. AREA CHOSEN FOR STOCKPILING OPERATIONS SHALL BE DRY AND STABLE.
2. EACH PILE SHALL BE SURROUNDED WITH SILT FENCING, THEN STABILIZED WITH VEGETATION OR COVERED.

SILT FENCE DETAIL NOT TO SCALE

ROCK OUTLET PROTECTION DETAIL NOT TO SCALE

TOPSOIL, SEED AND MULCH DETAIL NOT TO SCALE

TEMPORARY TREE PROTECTION DETAIL NOT TO SCALE

DRAWN BY: MAB			CHECKED BY: DCK				
REVISIONS:			REVISIONS:				
NO.	DATE	DESCRIPTION	BY	NO.	DATE	DESCRIPTION	BY
1	12/28/18	REVISED FOR PLANNING BOARD SUBMISSION	MAB	7	12/31/19	NO CHANGE THIS SHEET	CMB
2	02/28/19	NO CHANGE ON THIS SHEET	MAB				
3	03/29/19	REVISED PER PLANNING BOARD COMMENTS	MAB				
4	04/25/19	REVISED PER PLANNING BOARD COMMENTS	MAB				
5	05/29/19	NO CHANGE THIS SHEET	MAB				
6	10/29/19	REVISED PER PLANNING BOARD COMMENTS	CMB				

DRAWN BY: MAB			CHECKED BY: DCK				
REVISIONS:			REVISIONS:				
NO.	DATE	DESCRIPTION	BY	NO.	DATE	DESCRIPTION	BY
1	12/28/18	REVISED FOR PLANNING BOARD SUBMISSION	MAB	7	12/31/19	NO CHANGE THIS SHEET	CMB
2	02/28/19	NO CHANGE ON THIS SHEET	MAB				
3	03/29/19	REVISED PER PLANNING BOARD COMMENTS	MAB				
4	04/25/19	REVISED PER PLANNING BOARD COMMENTS	MAB				
5	05/29/19	NO CHANGE THIS SHEET	MAB				
6	10/29/19	REVISED PER PLANNING BOARD COMMENTS	CMB				

Dig Safe New York
800-962-7962
www.digsafenyork.org

HUDSON LAND DESIGN
PROFESSIONAL ENGINEERING P.C.
174 MAIN ST., BEACON, NEW YORK 12508
13 CHAMBERS ST., NEWBURGH, NEW YORK 12550
PH: 845-440-6928
F: 845-440-6937

SEAL

SITE AND E&SC DETAILS

23-28 CREEK DRIVE

23-28 CREEK ROAD
CITY OF BEACON
DUTCH COUNTY, NEW YORK
TAX ID: 6054-37-037825

JOB #: 2018-029
DATE: 10/23/2018
SCALE: AS SHOWN
TITLE: D-1
SHEET: 10 OF 12