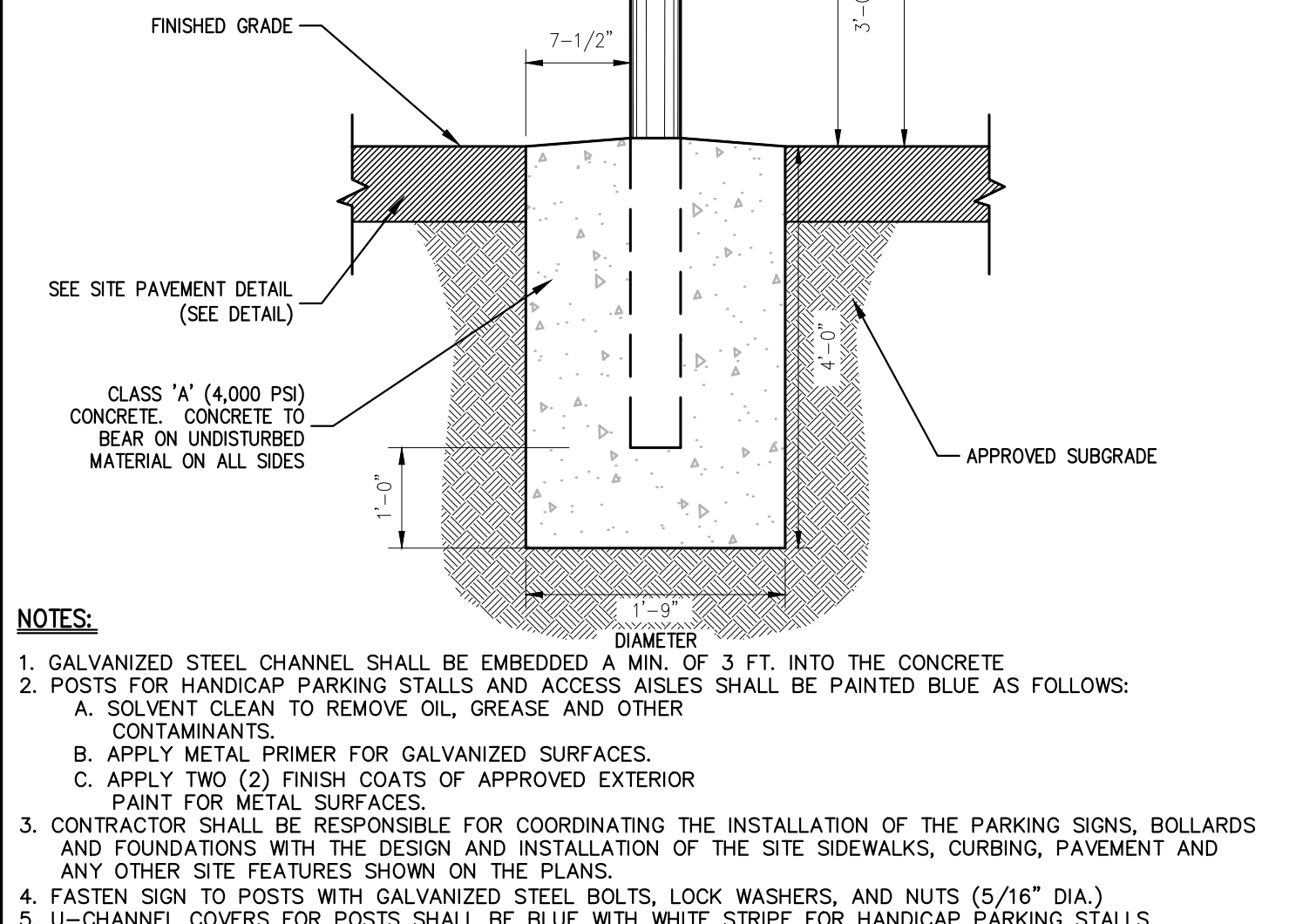
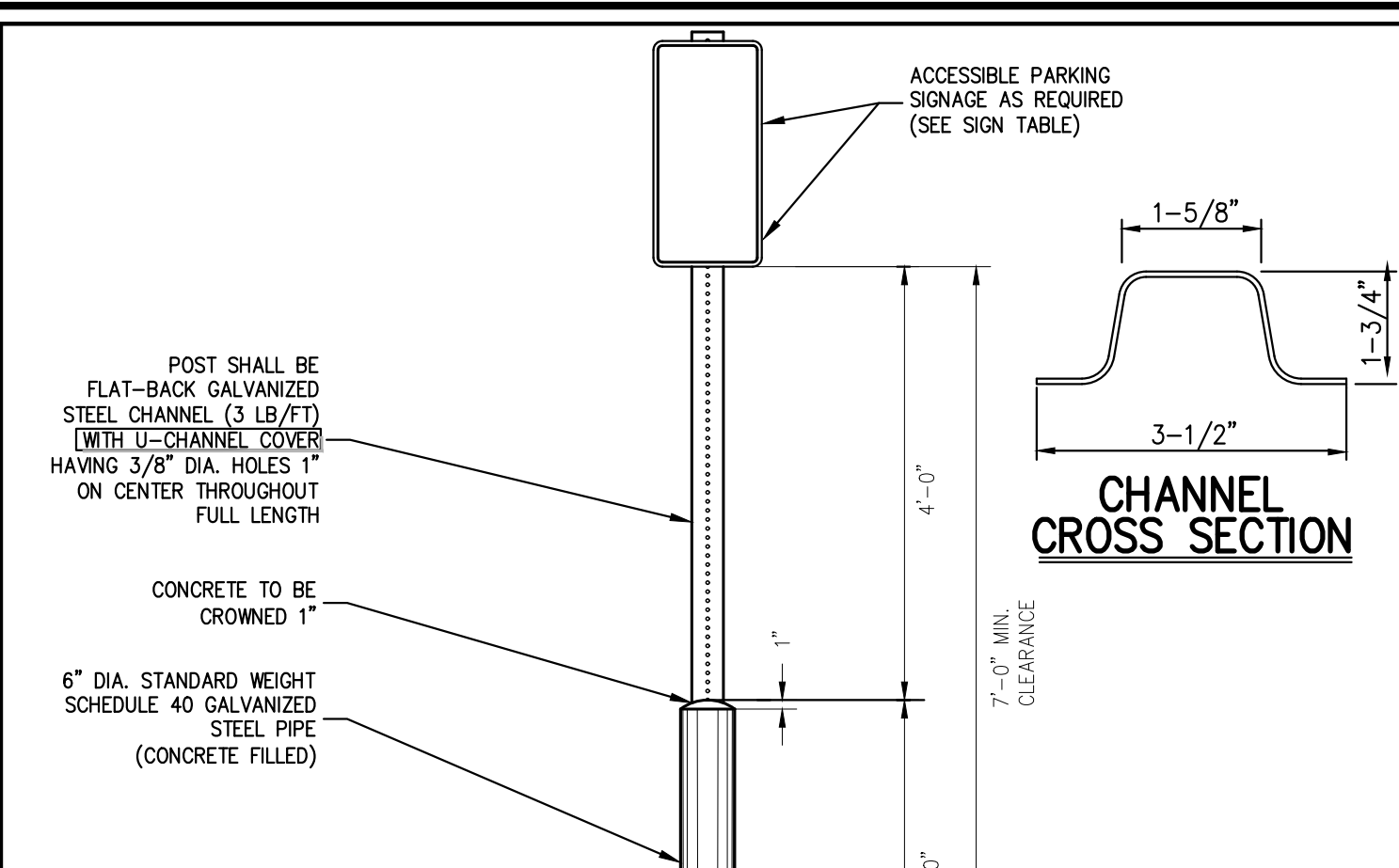
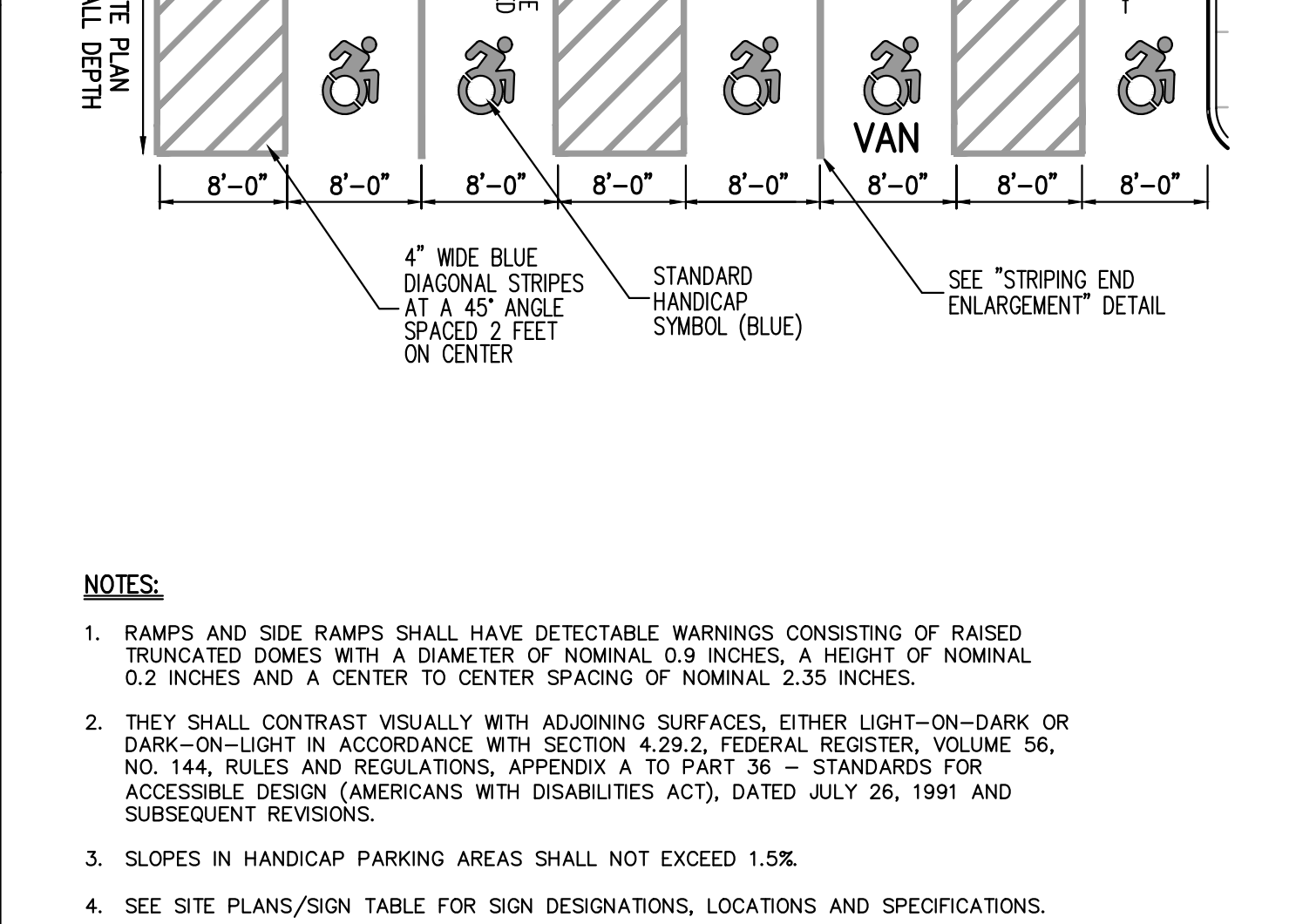
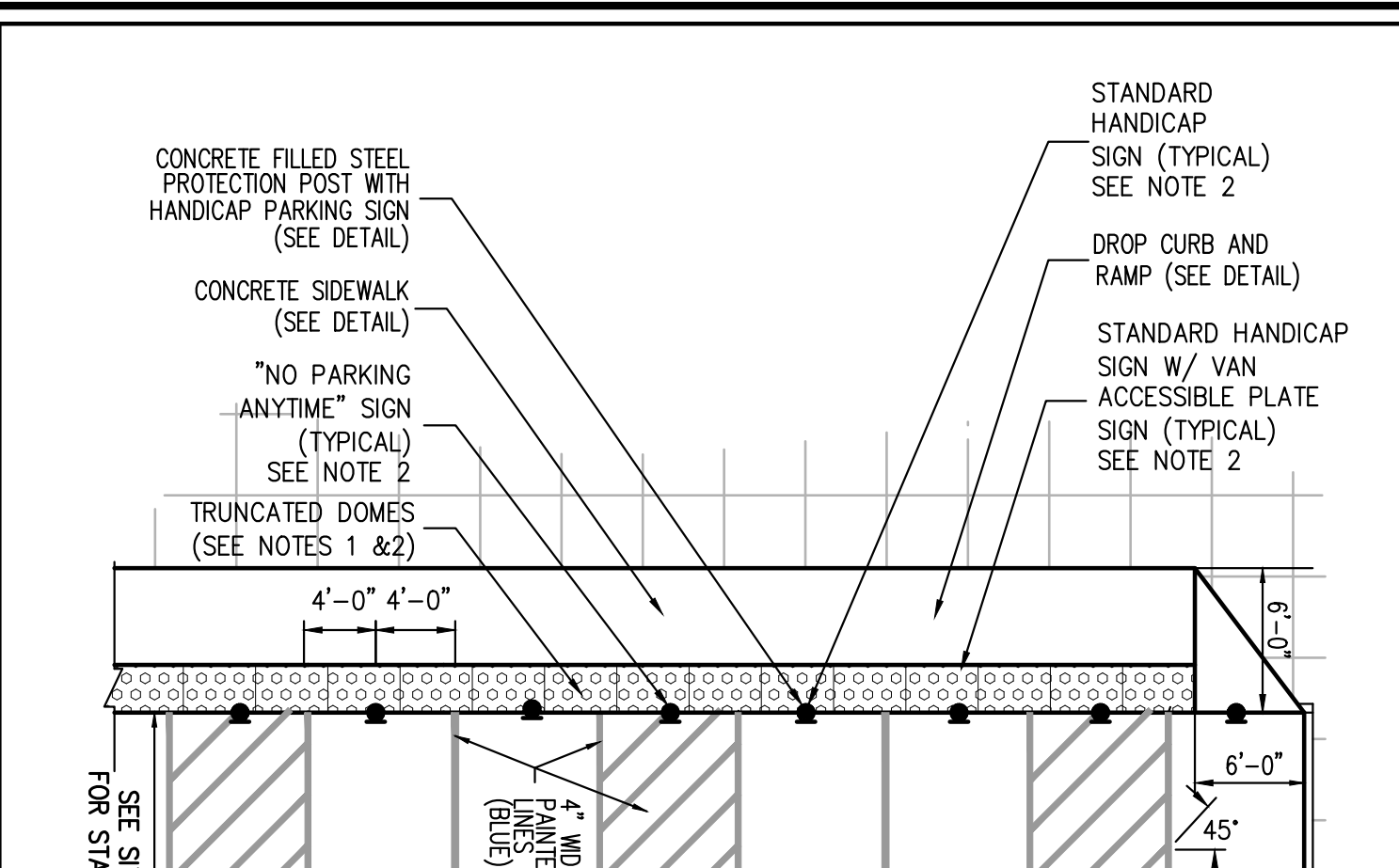
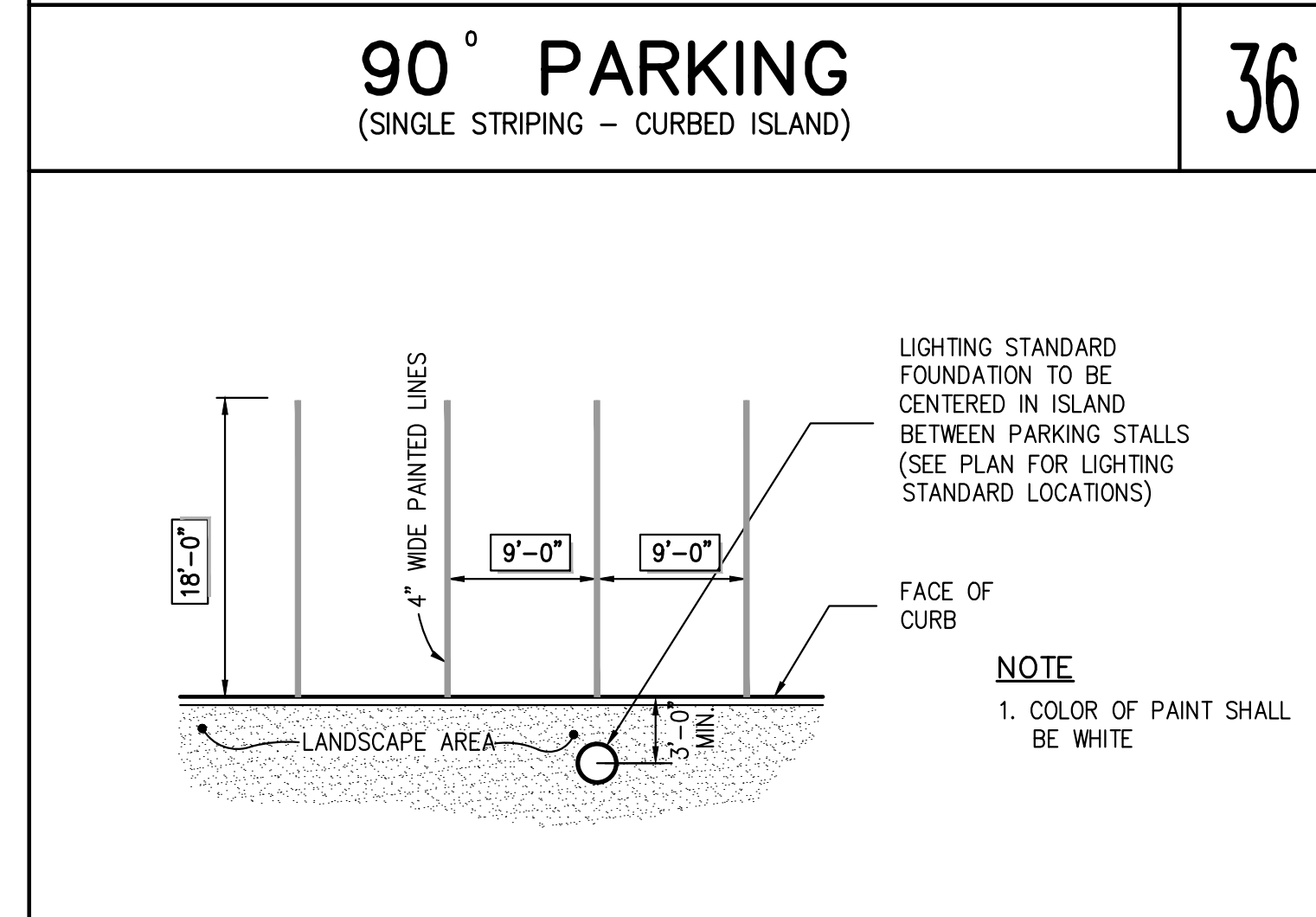
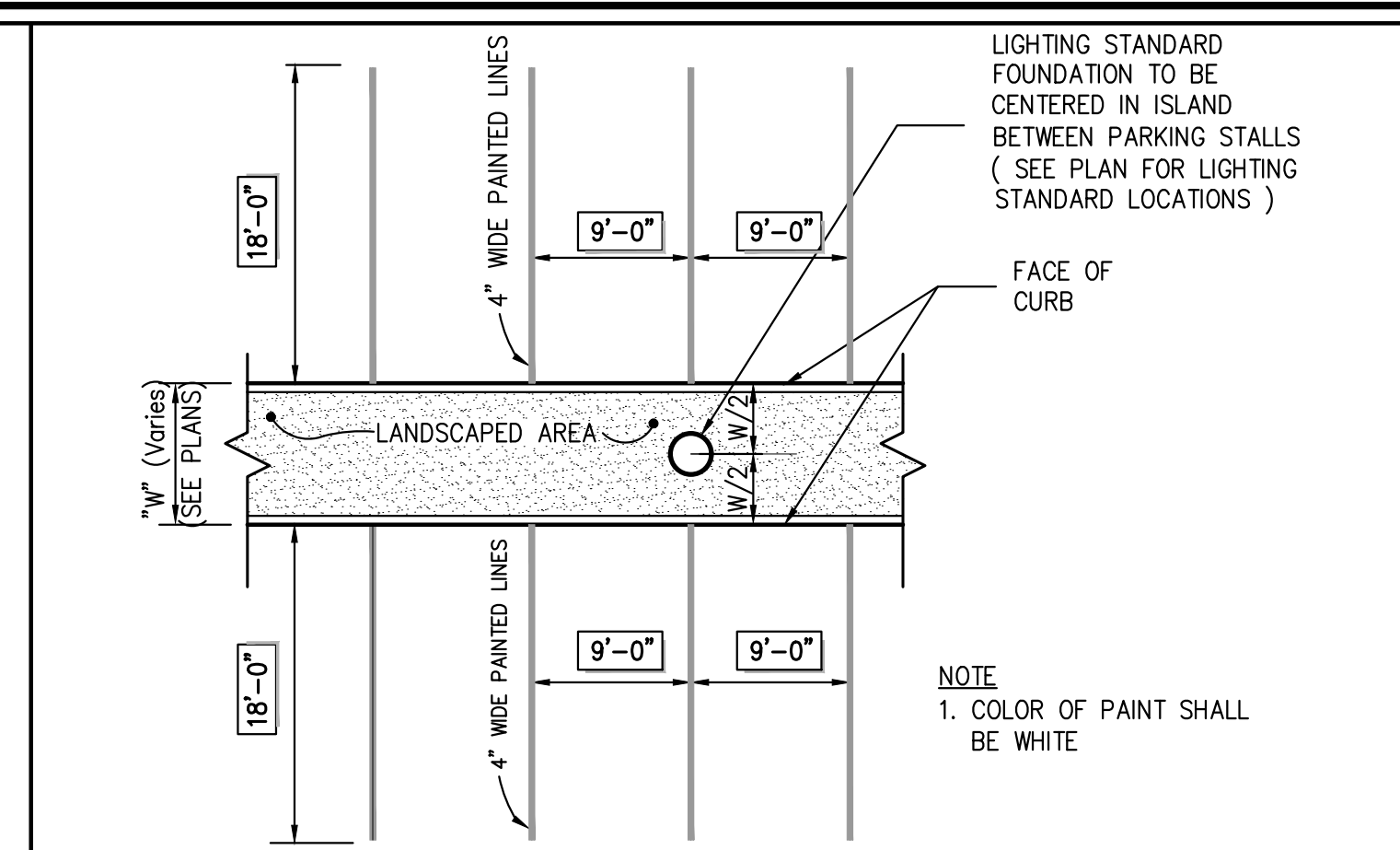
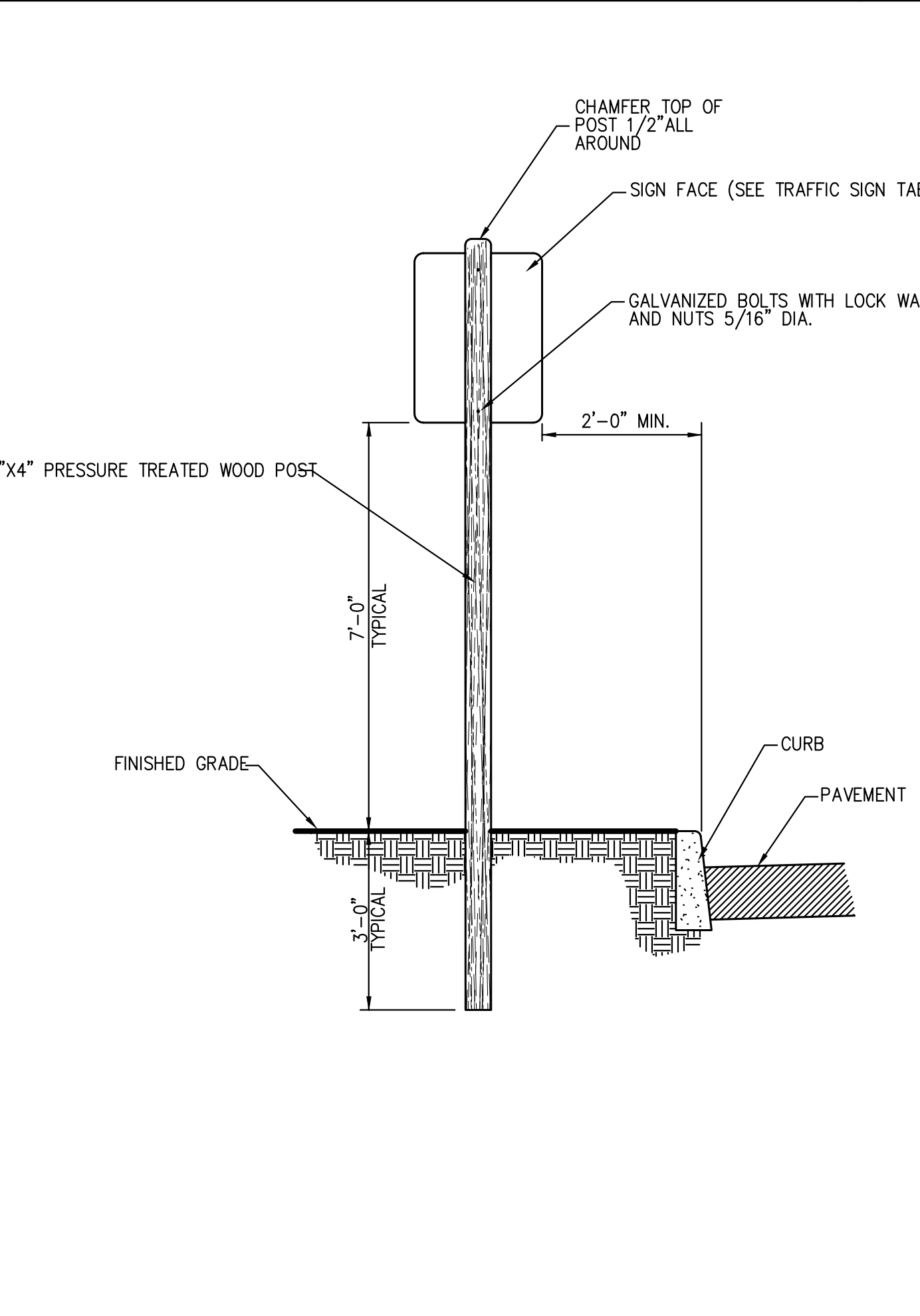


- NOTES:**
- THIS SHEET IS INTENDED TO DEPICT THE DIMENSIONAL REQUIREMENTS OF TYPICAL ACCESSIBLE PARKING SPACES, THE SIDEWALK, CURBING, AND PAVEMENT MATERIAL SHALL BE AS SPECIFIED ELSEWHERE IN THE CONTRACT DOCUMENTS.
  - LOCATION - PARKING SPACES FOR USE BY PERSONS WITH DISABILITIES SHALL BE IN THE SPACES CLOSEST TO THE NEAREST ACCESSIBLE BUILDING OR FACILITY ENTRANCE ON AN ACCESSIBLE ROUTE.
  - SURFACE SLOPES - SLOPES AT ACCESSIBLE PARKING SPACES, ACCESS AISLES, AND ADJOINING WALKWAYS SHALL NOT EXCEED 1:50 IN ANY DIRECTION.
  - SIGNAGE - EACH ACCESSIBLE PARKING SPACE SHALL BE MARKED BY PERMANENTLY INSTALLED ABOVE GROUND SIGNS WHICH DISPLAY THE INTERNATIONAL SYMBOL OF ACCESS. EACH ACCESS AISLE SHALL BE MARKED BY PERMANENTLY INSTALLED ABOVE GROUND SIGNS INDICATING THAT PARKING IS NOT PERMITTED IN THE AISLE. SIGNS SHALL NOT BLOCK THE ACCESSIBLE CLEAR WIDTH OF ADJACENT WALKWAYS, SIGNS LOCATED WHERE THEY MAY BE HIT BY VEHICLES BEING PARKED SHALL BE INSTALLED AS SHOWN IN THE PROTECTION POST BASE DETAIL. THE BOTTOMS OF THE SIGNS LOCATED ON POST INSTALLED IN PAVED AREAS SHALL BE AT LEAST 7' ABOVE THE WALKWAY SURFACE. THE BOTTOMS OF SIGNS LOCATED IN UNPAVED AREAS SHALL BE 7' ABOVE THE ADJACENT PAVEMENT SURFACE.
  - A SMOOTH, FLUSH TRANSITION MUST BE PROVIDED BETWEEN ALL PEDESTRIAN WALKWAYS AND THE ACCESSIBLE PARKING SPACES AND AISLES.
  - VEHICLE SIDE FACE OF CONCRETE BUMPER BLOCKS SHALL BE SET 2' BACK FROM EDGE OF PARKING STALL. CONCRETE BLOCKS SHALL NOT BE INSTALLED WITHIN ACCESS AISLES.



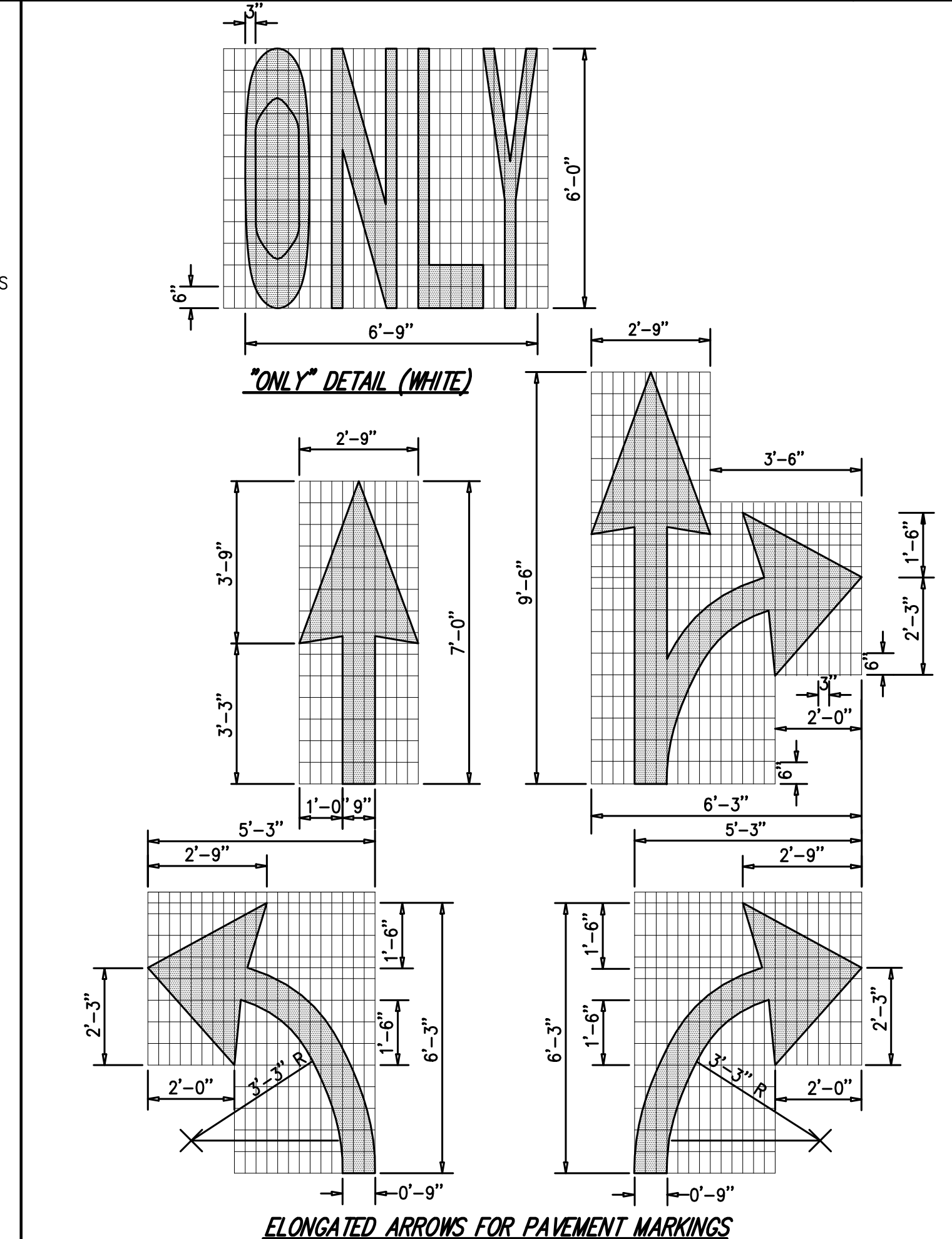
**TYPICAL ACCESSIBLE PARKING STALL AND AISLE**  
(TYPE B)

35



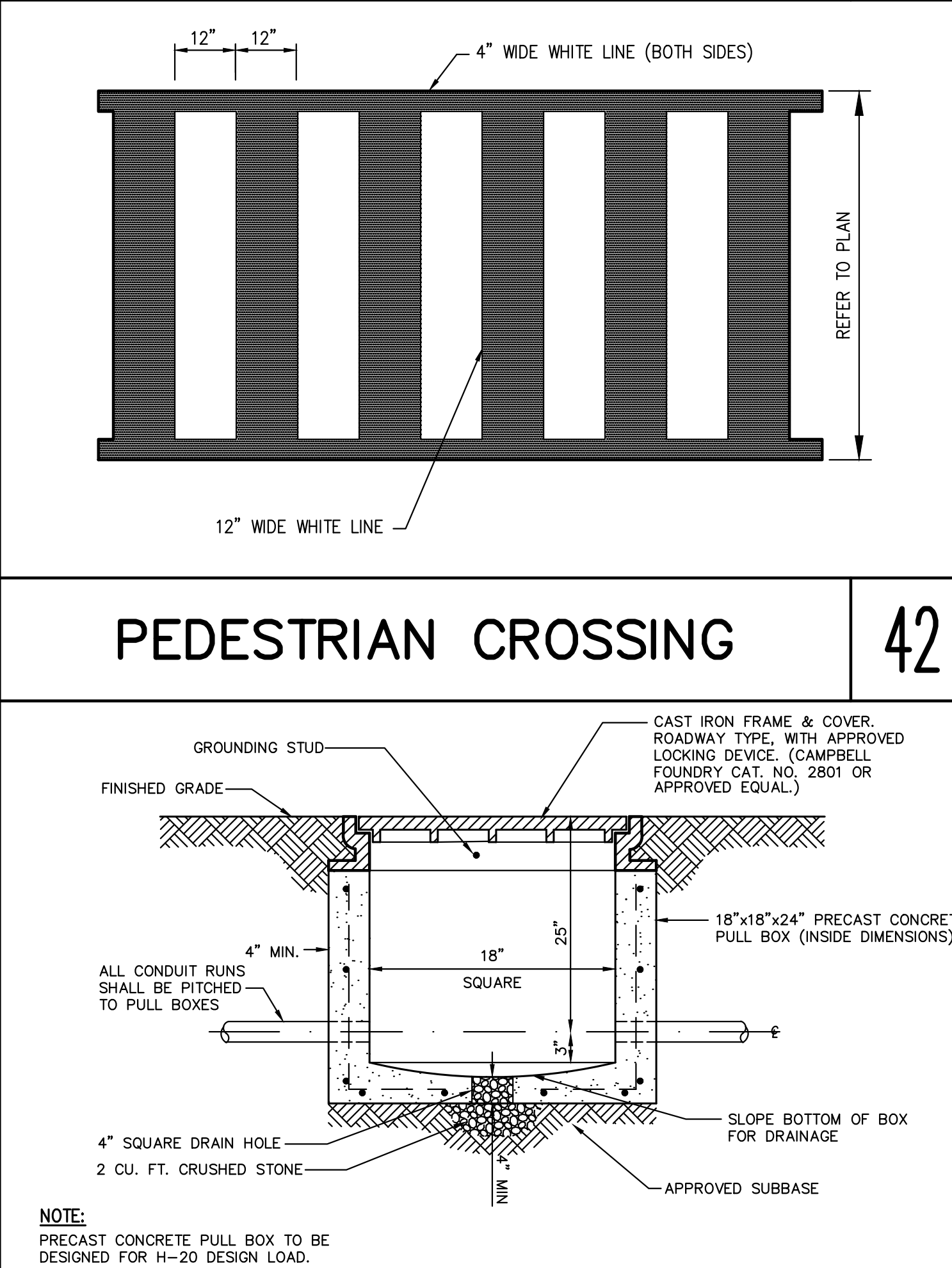
**90° PARKING**  
(SINGLE STRIPING - CURBED PERIMETER)

37



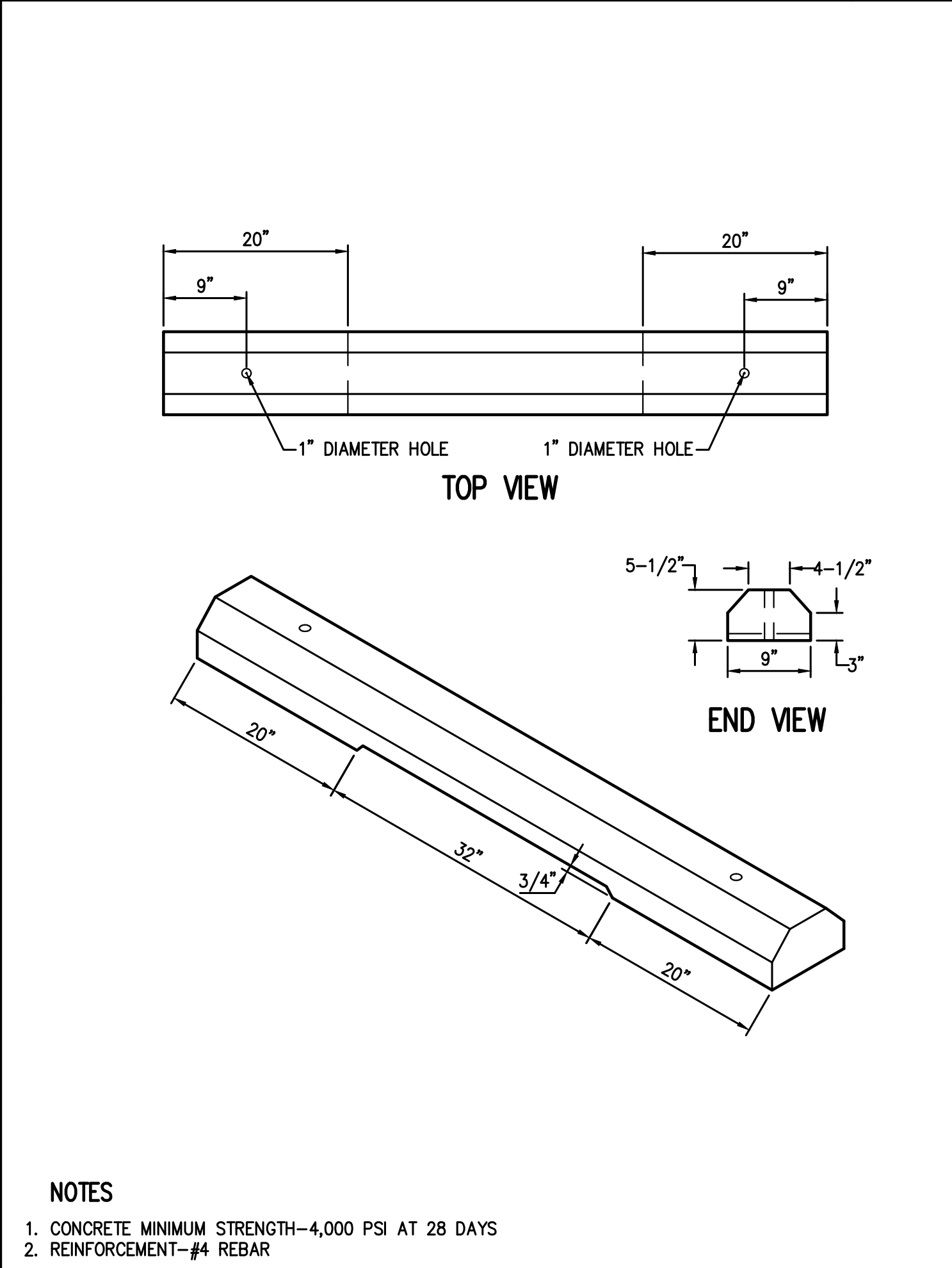
**HANDICAP PARKING**  
(SINGLE STRIPING - CURBLINE ALIGNMENT - W/SIDEWALK)  
(NEW YORK)

38



**ACCESSIBLE PARKING SIGN DETAIL**

39



**TRAFFIC SIGN POST**  
(WOOD)

40

**90° PARKING**  
(SINGLE STRIPING - CURBED PERIMETER)

41

**HANDICAP PARKING**  
(SINGLE STRIPING - CURBLINE ALIGNMENT - W/SIDEWALK)  
(NEW YORK)

42

**ACCESSIBLE PARKING SIGN DETAIL**

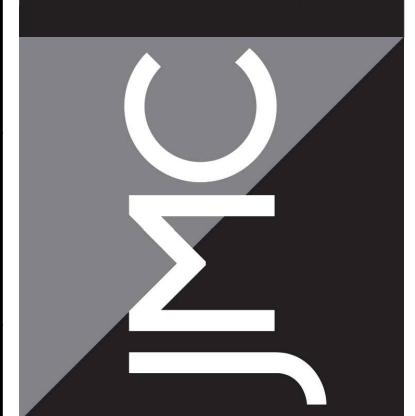
44

NOT FOR CONSTRUCTION

NOT FOR CONSTRUCTION

Date	12/30/19
Revision	1. REVISED PER CITY COMMENTS
No.	1.

JMC Planning, Engineering, Landscape Architecture & Land Surveying, PLLC  
JMC Site Development Consultants, LLC  
John Meyer Consulting, Inc.  
120 BEDFORD ROAD - ARMONK, NY 10504  
voice 914.273.5225 • fax 914.273.2102  
www.jmcplic.com



**CONSTRUCTION DETAILS**  
BEACON COMMONS  
16 WEST MAIN STREET  
BEACON, NY 12508

ANY ALTERATION OF PLANS, SPECIFICATIONS, PLATS AND REPORTS BEARING THE SEAL OF A LICENSED PROFESSIONAL ENGINEER OR LICENSED LAND SURVEYOR IS A VIOLATION OF SECTION 7209 OF THE NEW YORK STATE EDUCATION LAW, EXCEPT AS PROVIDED FOR BY SECTION 7209, SUBSECTION 2.

Drawn:	AH	Approved:	SS
Scale:	NOT TO SCALE		
Date:	10/29/2019		
Project No.:	18119		
1819-ITEMS	C-905		
Drawing No.:	C-905		
<b>C-905</b> (Sheet 19 of 24)			