

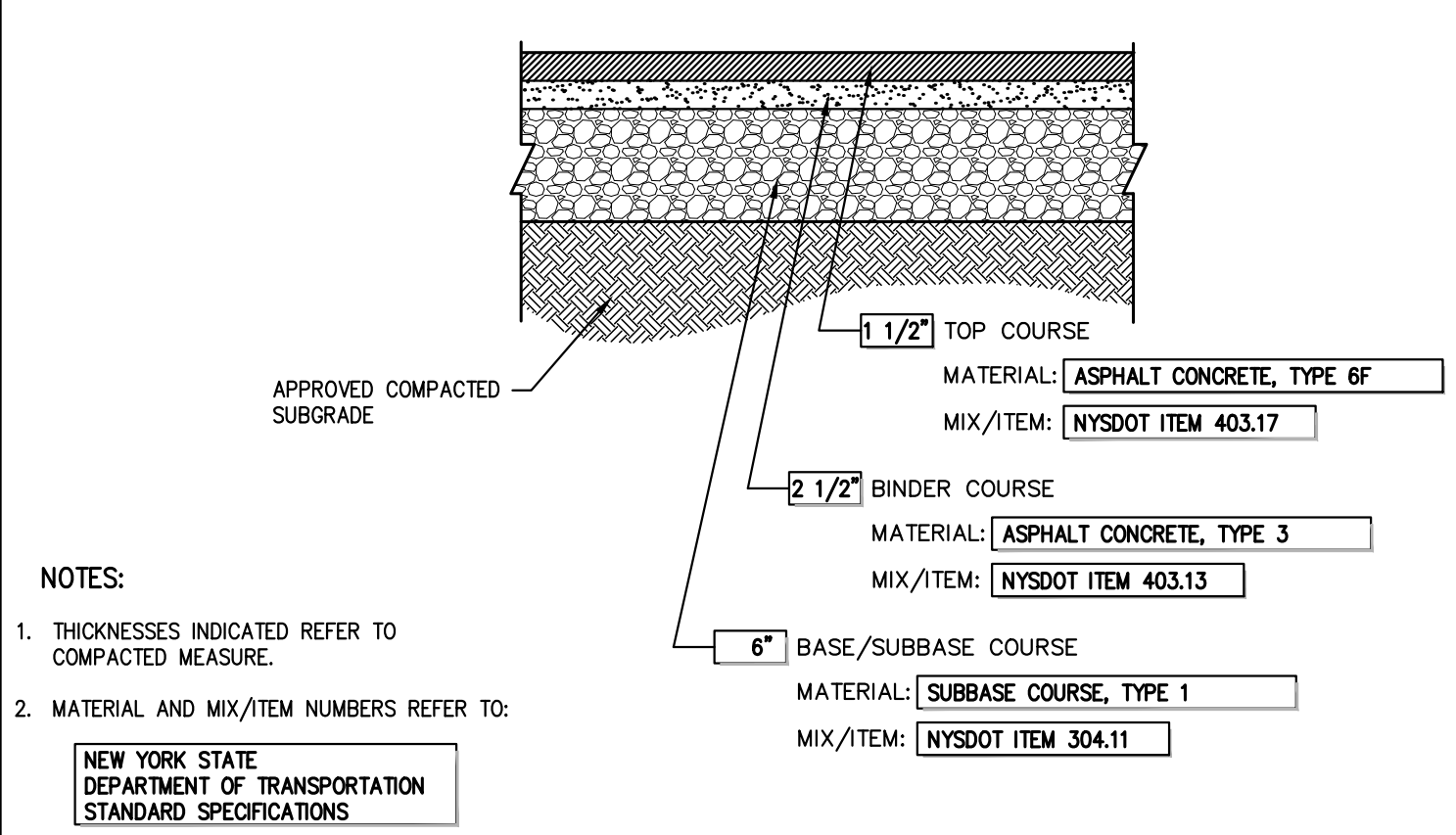
HORIZONTAL SEPARATION

SANITARY SEWER OR STORM DRAIN OVER WATER MAIN

WATER MAIN OVER SANITARY SEWER OR STORM DRAIN

VERTICAL SEPARATION

- NOTES:**
- NORMAL CONDITIONS:
 - WHENEVER A WATER MAIN MUST CROSS OVER OR UNDER A SANITARY SEWER OR STORM DRAIN, THE PIPES SHALL BE LAID TO PROVIDE A VERTICAL SEPARATION BETWEEN THEM OF AT LEAST 18 INCHES, AS MEASURED FROM THE BOTTOM OF THE HIGHER PIPE TO THE CROWN OF THE LOWER PIPE.
 - FULL LENGTH OF WATER PIPE MUST BE CENTERED AT THE POINT OF CROSSING; NO JOINTS WILL BE PERMITTED AT THE POINT OF CROSSING.
 - WATER MAIN CROSSING UNDER SANITARY SEWERS:
 - VERTICAL SEPARATION OF 18 INCHES MUST BE PROVIDED.
 - ADEQUATE STRUCTURAL SUPPORT MUST BE PROVIDED FOR THE SANITARY SEWER TO PREVENT EXCESSIVE DEFLECTION OF JOINTS AND SETTLING.
 - FULL LENGTH OF WATER PIPE MUST BE CENTERED AT THE POINT OF CROSSING; NO JOINTS WILL BE PERMITTED AT THE POINT OF CROSSING.
 - IF DURING CONSTRUCTION IT IS FOUND THAT THE REQUIRED SEPARATION OF WATER MAINS, SANITARY SEWERS, STORM SEWERS AND BUILDING SANITARY SEWERS CANNOT BE MET, THE CONTRACTOR OR HIS AUTHORIZED REPRESENTATIVE SHALL IN WRITING ADVISE JMC OF THE SPECIFIC CONDITIONS ENCOUNTERED. APPROVAL OF ALTERNATIVE SEPARATION CRITERIA SHALL BE OBTAINED FROM THE DUTCHESS COUNTY HEALTH DEPARTMENT PRIOR TO INSTALLATION.

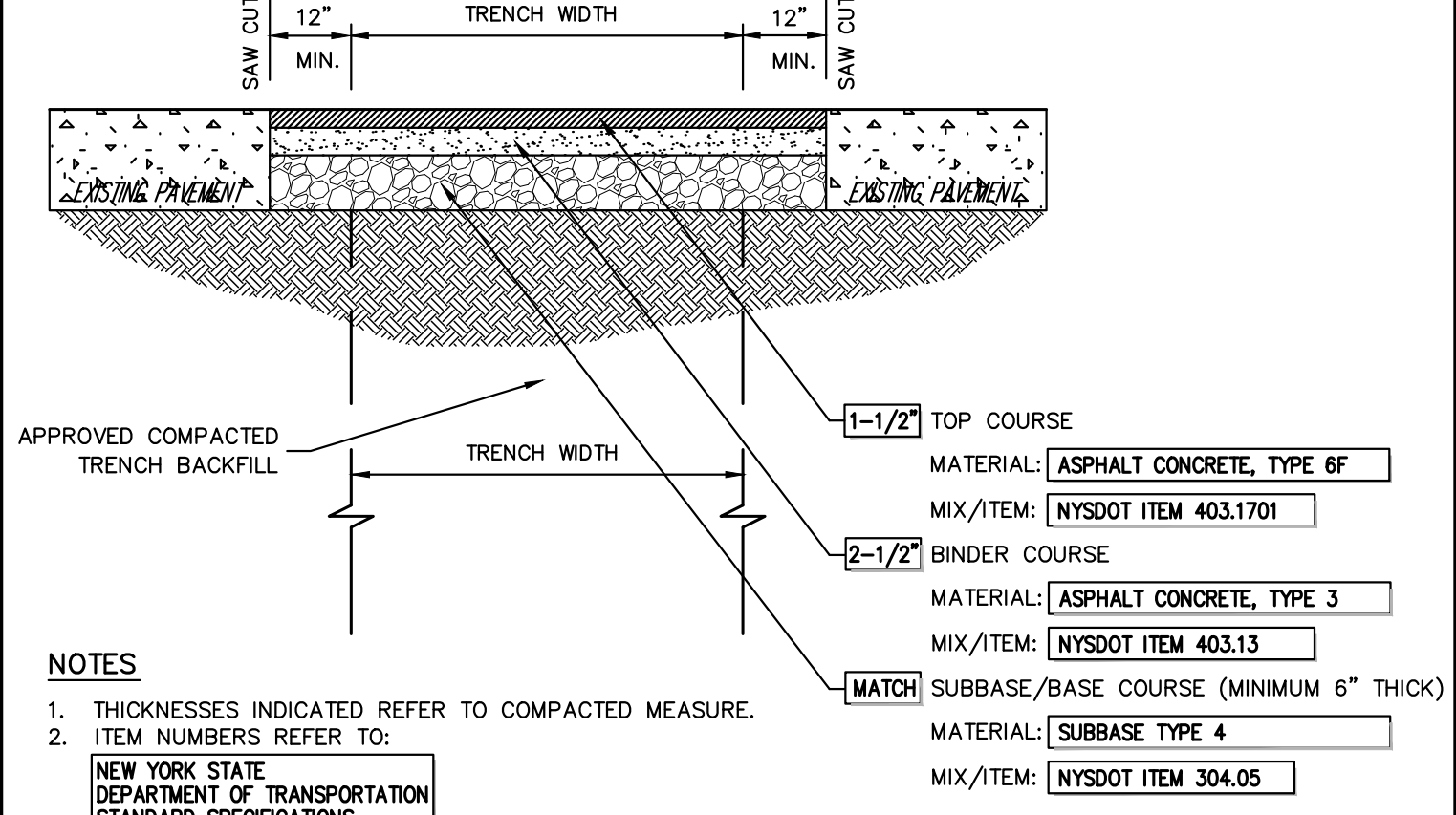


- NOTES:**
- THICKNESSES INDICATED REFER TO COMPACTED MEASURE.
 - MATERIAL AND MIX/ITEM NUMBERS REFER TO:

NEW YORK STATE DEPARTMENT OF TRANSPORTATION STANDARD SPECIFICATIONS

SITE PAVEMENT (Light Duty)

26



- NOTES:**
- THICKNESSES INDICATED REFER TO COMPACTED MEASURE.
 - ITEM NUMBERS REFER TO:

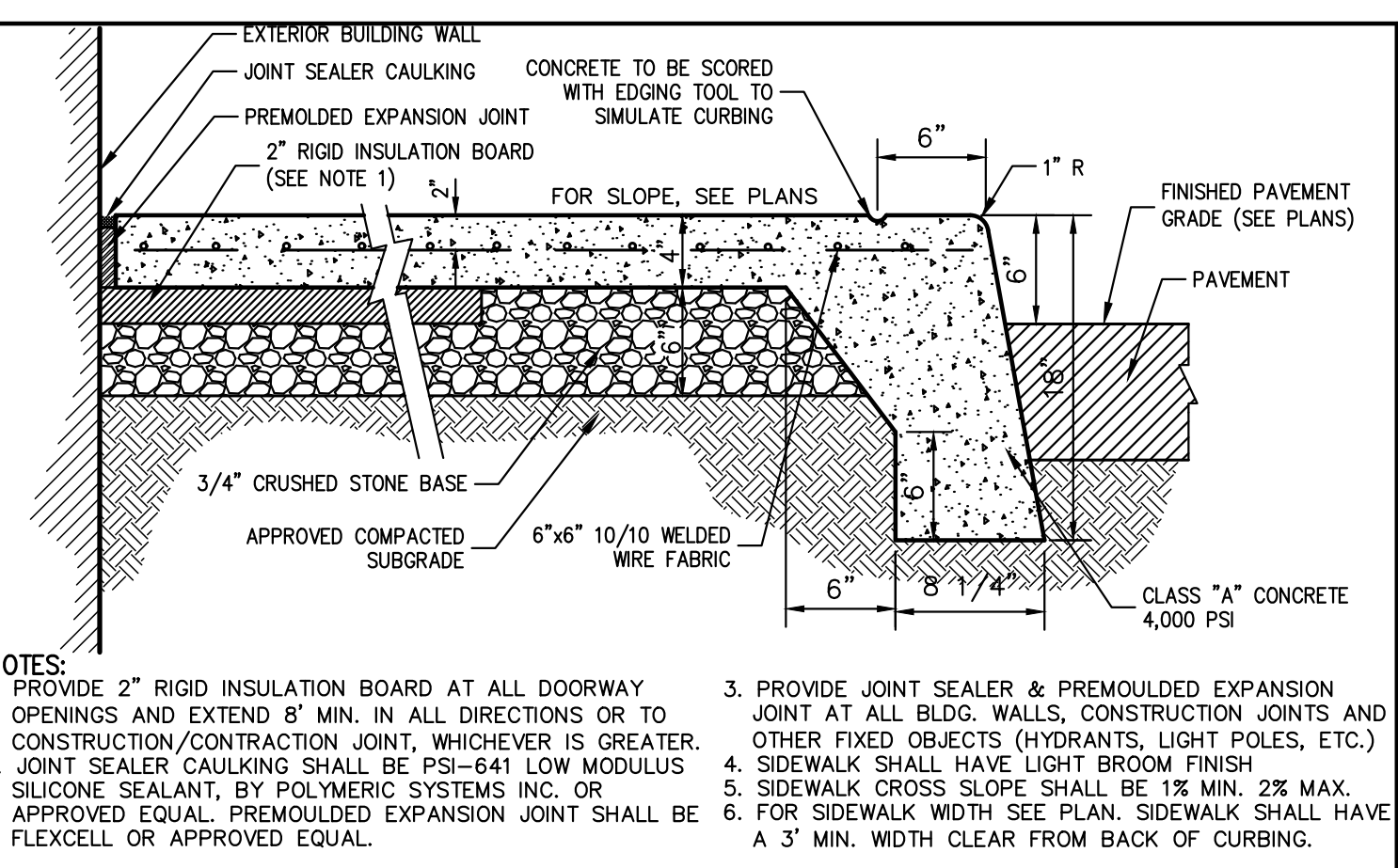
NEW YORK STATE DEPARTMENT OF TRANSPORTATION STANDARD SPECIFICATIONS

PAVEMENT REPLACEMENT OVER TRENCH

28

SEPARATION OF WATER AND SANITARY SEWER/STORM DRAIN LINES

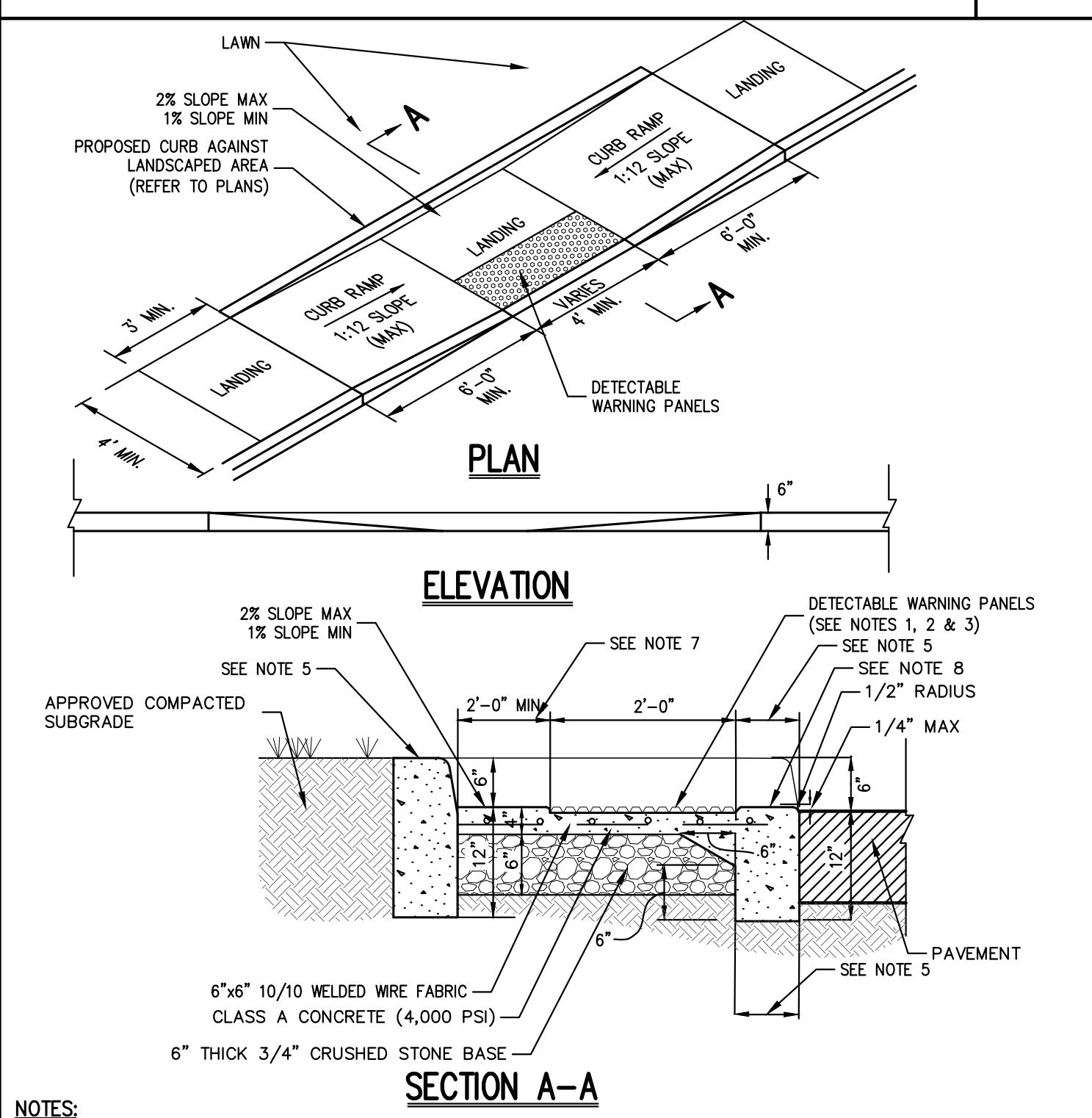
25



- NOTES:**
- PROVIDE 2" RIGID INSULATION BOARD AT ALL DOORWAY OPENINGS AND EXTEND 8" MIN. IN ALL DIRECTIONS OR TO CONSTRUCTION CONTRACTION JOINT, WHICHEVER IS GREATER.
 - JOINT SEALER CAULKING SHALL BE PSI-641 LOW MODULUS SILICONE SEALANT, BY POLYMERIC SYSTEMS INC. OR APPROVED EQUAL. PREFORMED EXPANSION JOINT SHALL BE FLEXCELL OR APPROVED EQUAL.
 - PROVIDE JOINT SEALER & PREFORMED EXPANSION JOINT AT ALL BLDG. WALLS, CONSTRUCTION JOINTS AND OTHER FIXED OBJECTS (HYDRANTS, LIGHT POLES, ETC.).
 - SIDEWALK SHALL HAVE LIGHT BROOM FINISH.
 - SIDEWALK CROSS SLOPE SHALL BE 1% MIN. 2% MAX. APPROVED EQUAL. PREFORMED EXPANSION JOINT SHALL BE A 3" MIN. WIDTH CLEAR FROM BACK OF CURBING.
 - FOR SIDEWALK WIDTH SEE PLAN. SIDEWALK SHALL HAVE FLEXCELL OR APPROVED EQUAL.

SITE PAVEMENT (Heavy Duty)

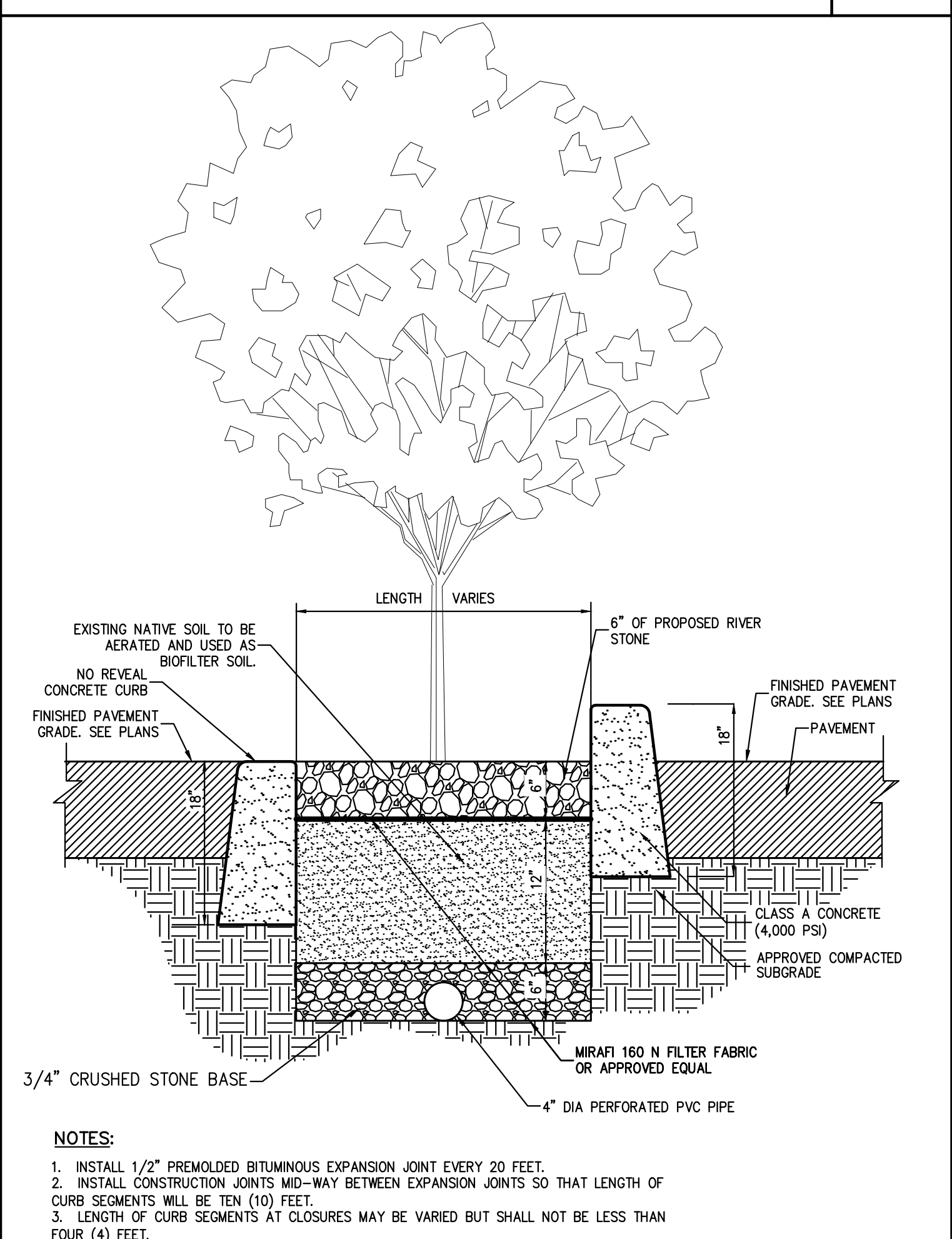
27



- NOTES:**
- RAMPS SHALL HAVE CAST IN PLACE DETECTABLE/TACTILE WARNING SURFACE TILES AS MANUFACTURED BY ARMOR-TILE (OR APPROVED EQUAL) AND SHALL CONSIST OF RAISED TRUNCATED DOMES WITH A DIAMETER OF NOMINAL 0.9 INCHES, A HEIGHT OF NOMINAL 0.2 INCHES AND A CENTER TO CENTER SPACING OF NOMINAL 2.35 INCHES.
 - DETECTABLE WARNING PANELS SHALL CONTRAST VISUALLY WITH ADJOINING SURFACES, EITHER LIGHT-ON-DARK OR DARK-ON-LIGHT IN ACCORDANCE WITH SECTION 4.29.2, FEDERAL REGISTER, VOLUME 56, NO. 144, RULES AND REGULATIONS, APPENDIX A TO PART 36 - STANDARDS FOR ACCESSIBLE DESIGN (AMERICANS WITH DISABILITIES ACT), LATEST EDITION.
 - 24" WIDTH OF PANELS TO BE INSTALLED DIRECTLY BEHIND CURB AND IN ACCORDANCE WITH MANUFACTURER'S SPECIFICATIONS.
 - A MINIMUM OF 3 FEET CLEAR SHALL BE MAINTAINED AT ANY PERMANENT OBSTACLE IN ACCESSIBLE ROUTE (I.E., HYDRANTS, UTILITY POLES, TREE WELLS, SIGNS, ETC.).
 - CURB TREATMENT VARIES. SEE PLANS FOR CURB TYPE AND SEE CURB DETAIL FOR DIMENSIONS.
 - RAMP, CURB AND ADJACENT PAVEMENTS SHALL BE GRADED TO PREVENT PONDING.
 - WHEN LANDINGS OF RAMP ADJONS A DOORWAY THEN THE MINIMUM DOORWAY MANEUVERING AREA SHALL BE AT LEAST THE WIDTH OF THE DOORWAY AND SHALL HAVE A MINIMUM DEPTH OF:
 - MANUAL SWING DOORS = 60" MIN.
 - FULL POWERED AUTOMATIC SLIDING DOORS = 48" MIN.
 - CONTRACTOR TO ENSURE TOP OF CURB MATCHES SLOPE OF RAMP.

CAST-IN-PLACE CONCRETE CURB

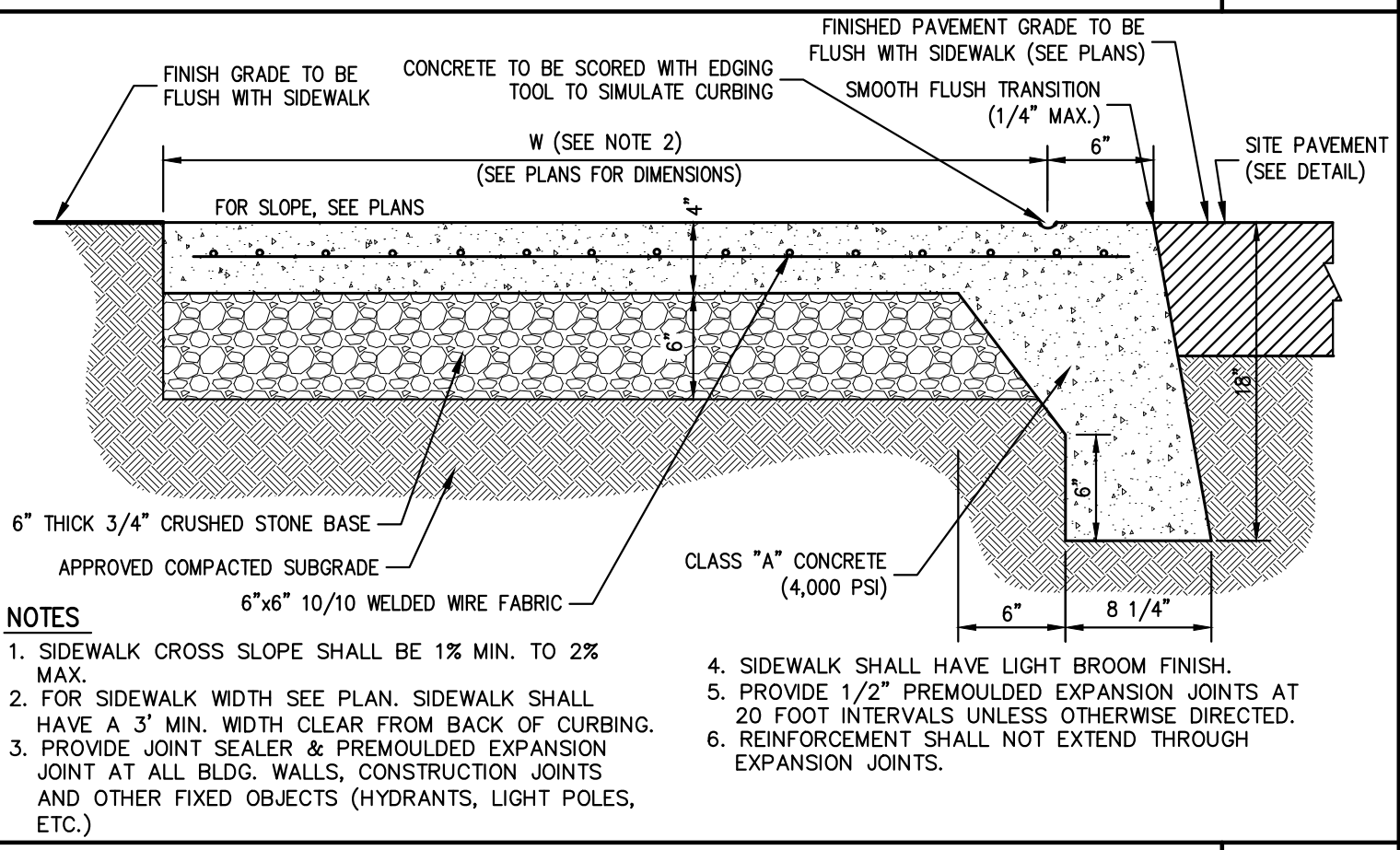
29



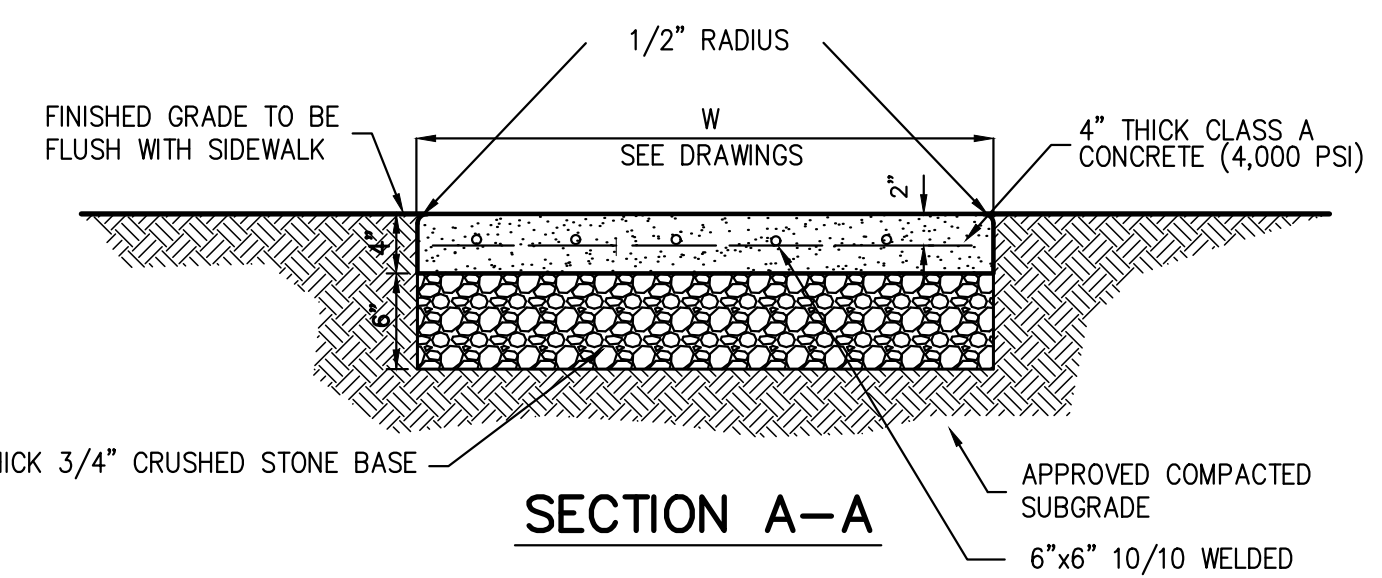
- NOTES:**
- INSTALL 1/2" PREMOLDED BITUMINOUS EXPANSION JOINT EVERY 20 FEET.
 - INSTALL CONSTRUCTION JOINTS MID-WAY BETWEEN EXPANSION JOINTS SO THAT LENGTH OF CURB SEGMENTS WILL BE TEN (10) FEET.
 - LENGTH OF CURB SEGMENTS AT CLOSURES MAY BE VARIED BUT SHALL NOT BE LESS THAN FOUR (4) FEET.

BUILDING PERIMETER MONOLITHIC CURB & SIDEWALK

30



- NOTES:**
- SIDEWALK CROSS SLOPE SHALL BE 1% MIN. TO 2% MAX.
 - FOR SIDEWALK WIDTH SEE PLAN. SIDEWALK SHALL HAVE A 3" MIN. WIDTH CLEAR FROM BACK OF CURBING.
 - PROVIDE JOINT SEALER & PREFORMED EXPANSION JOINT AT ALL BLDG. WALLS, CONSTRUCTION JOINTS AND OTHER FIXED OBJECTS (HYDRANTS, LIGHT POLES, ETC.).
 - SIDEWALK SHALL HAVE LIGHT BROOM FINISH.
 - PROVIDE 1/2" PREMOLDED EXPANSION JOINTS AT 20 FOOT INTERVALS UNLESS OTHERWISE DIRECTED.
 - REINFORCEMENT SHALL NOT EXTEND THROUGH EXPANSION JOINTS.



- NOTES:**
- SIDEWALK CROSS SLOPE SHALL BE 1% MIN. TO 2% MAX.
 - PROVIDE 1/2" PREMOLDED EXPANSION JOINTS AT 20' INTERVALS UNLESS OTHERWISE DIRECTED.
 - REINFORCING SHALL NOT EXTEND THROUGH EXPANSION JOINTS.
 - SIDEWALK SHALL HAVE LIGHT BROOM FINISH

CONCRETE SIDEWALK

32

DROP CURB & RAMP (TYPE B) WITH DETECTABLE WARNING

33

STORMWATER TREATMENT LANDSCAPED AREA 2A1, 2A2 (W/ UNDERDRAIN)

34

NOT FOR CONSTRUCTION

Date: 12/30/19

Revision: REVISED PER CITY COMMENTS

No. 1.

JMC Planning, Engineering, Landscape Architecture & Land Surveying, PLLC
JMC Site Development Consultants, LLC
John Mayer Consulting, Inc.
120 BEDFORD ROAD - ARMONK, NY 10504
voice 914.273.5225 • fax 914.273.2102
www.jmcplic.com

JMC

CONSTRUCTION DETAILS

BEACON COMMONS
16 WEST MAIN STREET
BEACON, NY 12508

ANY ALTERATION OF PLANS, SPECIFICATIONS, PLATS AND REPORTS BEARING THE SEAL OF A LICENSED PROFESSIONAL ENGINEER OR LICENSED LAND SURVEYOR IS A VIOLATION OF SECTION 7209 OF THE NEW YORK STATE EDUCATION LAW, EXCEPT AS PROVIDED FOR BY SECTION 7209, SUBSECTION 2.

Drawn: AH Approved: SS
Scale: NOT TO SCALE
Date: 10/29/2019
Project No: 18119
1819-ITEMS C-904
Drawing No: C-904

C-904
(Sheet 18 of 24)