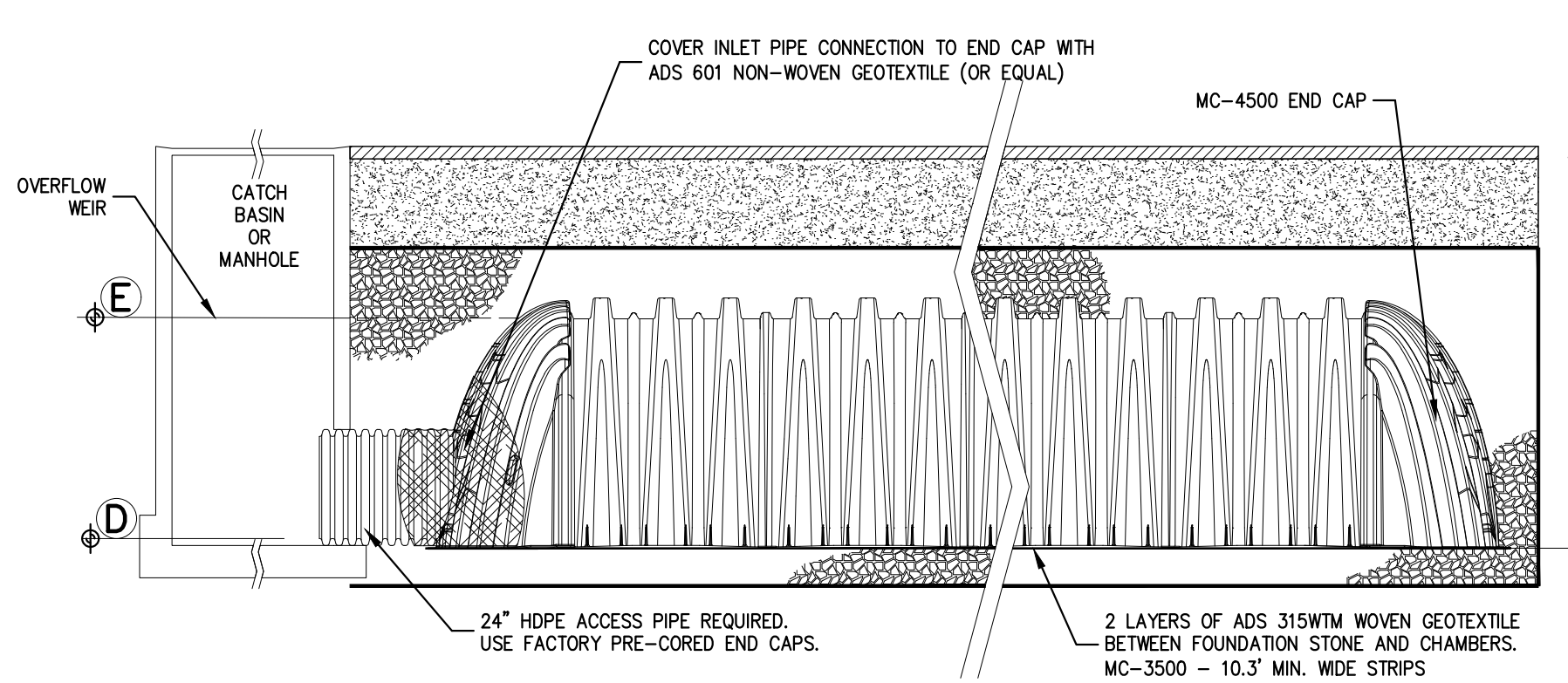


NOMINAL CHAMBER SPECIFICATIONS

SIZE (W x H x INSTALLED LENGTH)	100.0" x 60.0" x 48.3"
CHAMBER STORAGE	106.5 ft ³
MINIMUM INSTALLED STORAGE*	162.6 ft ³
NOMINAL WEIGHT	120 lbs

NOMINAL END CAP SPECIFICATIONS

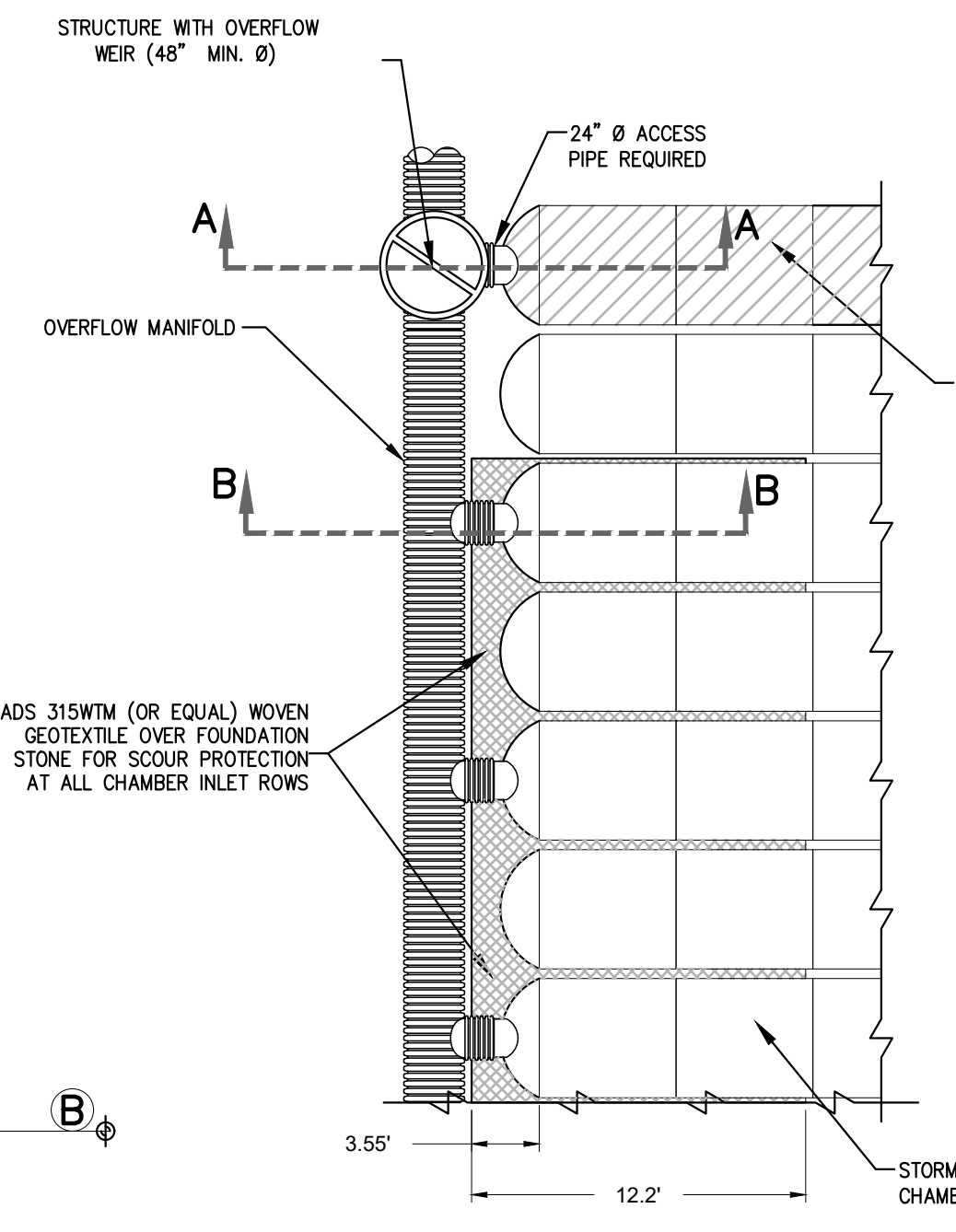
SIZE (W x H x INSTALLED LENGTH)	90.2" x 59.4" x 30.7"
END CAP STORAGE	35.7 ft ³
MINIMUM INSTALLED STORAGE*	108.7 ft ³
NOMINAL WEIGHT	120 lbs



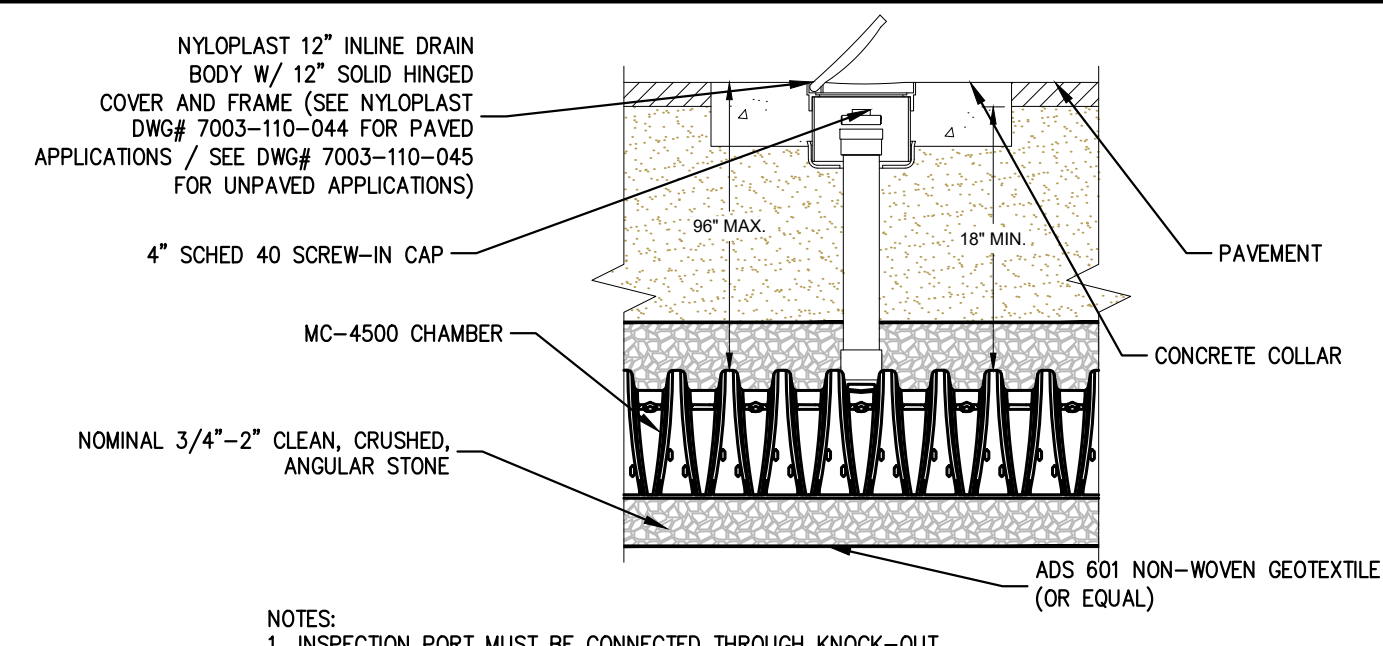
SECTION AT ISOLATOR ROW

SCHEDULE OF INVERTS

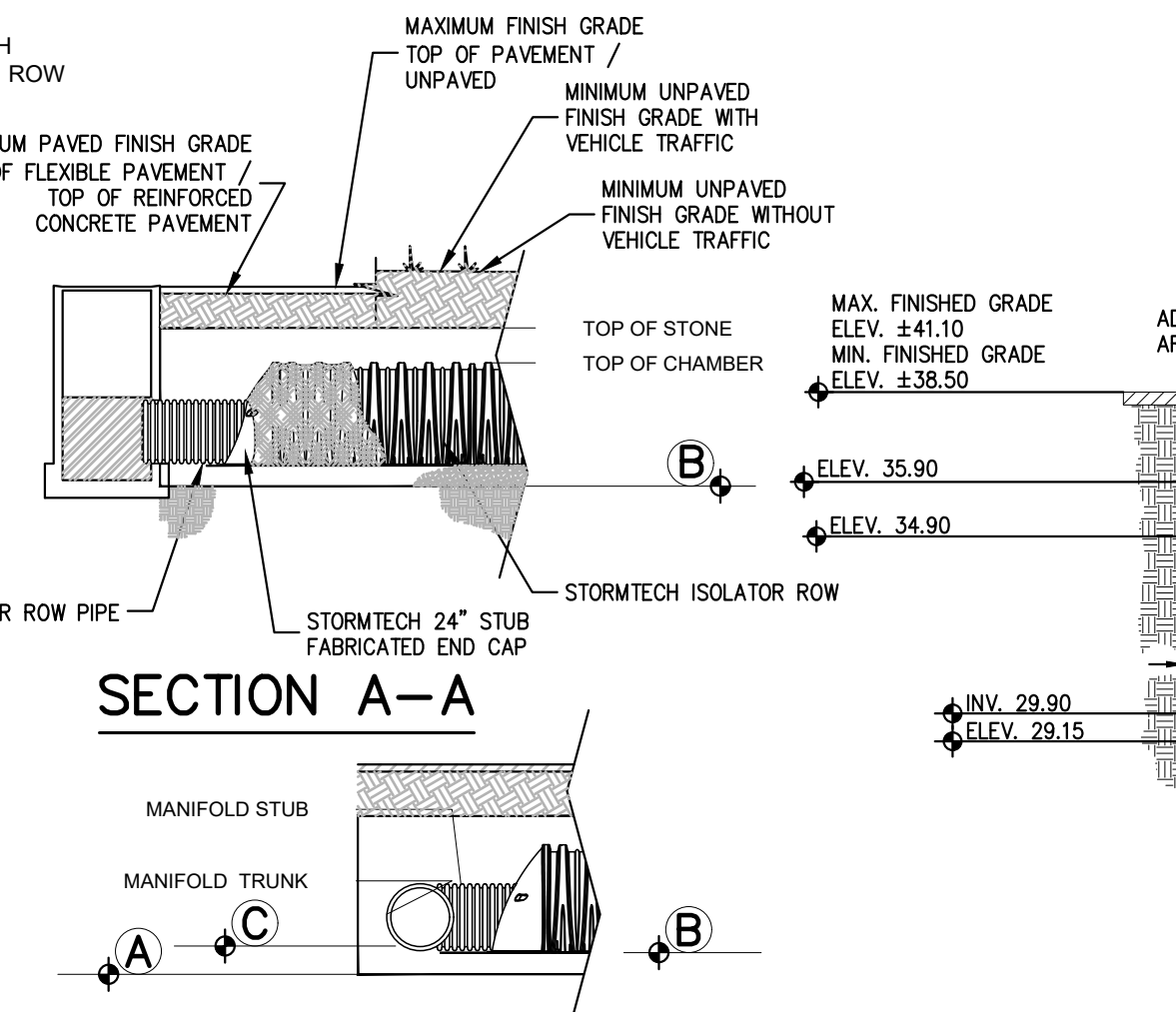
(A)	(B)	(C)	(D)	(E)
BOTTOM OF STONE	CHAMBER BOTTOM	MANIFOLD & STUB INVERT	ISOLATOR ROW PIPE INVERT	OVERFLOW WEIR INVERT (ISOLATOR ROW)
29.15	29.90	29.90	29.90	34.90



PLAN VIEW



INSPECTION PORT DETAIL

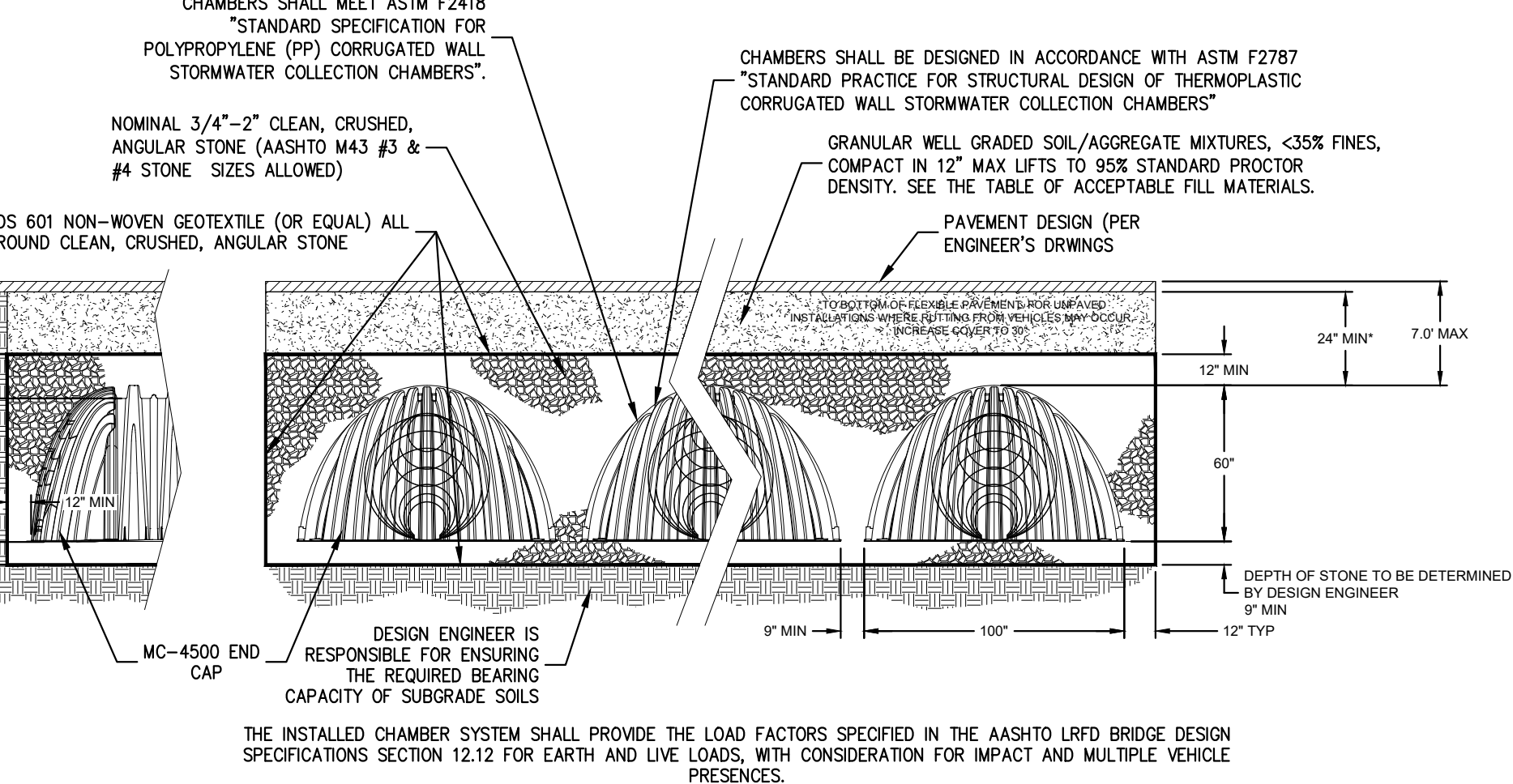


SECTION A-A

ACCEPTABLE FILL MATERIALS: STORMTECH MC-4500 CHAMBER SYSTEMS

MATERIAL LOCATION	DESCRIPTION	AASHTO M43 DESIGNATION*	COMPACTION/DENSITY REQUIREMENT
(D)	FILL MATERIAL FOR LAYER 'D' STARTS FROM THE TOP OF THE 'C' LAYER TO THE BOTTOM OF FLEXIBLE PAVEMENT OR UNPAVED FINISHED GRADE ABOVE. NOTE THAT PAVEMENT SUBBASE MAY BE PART OF THE 'D' LAYER.	N/A	PREPARE PER ENGINEER'S PLANS. PAVED INSTALLATIONS MAY HAVE STRINGENT MATERIAL AND PREPARATION REQUIREMENTS.
(C)	FILL MATERIAL FOR LAYER 'C' STARTS FROM THE TOP OF THE EMBEDMENT STONE ('B' LAYER) TO 24" ABOVE THE TOP OF THE CHAMBER. NOTE THAT PAVEMENT SUBBASE MAY BE A PART OF THIS LAYER.	3, 357, 4, 467, 5, 56, 57, 6, 67, 68, 7, 78, 8, 89, 9, 10	BEGIN COMPACTION AFTER 24" OF MATERIAL OVER THE CHAMBERS IS REACHED. COMPACT ADDITIONAL LAYERS IN 12" (305 mm) MAX LIFTS TO A MIN. 95% STANDARD PROCTOR DENSITY.
(B)	EMBEDMENT STONE SURROUNDING THE CHAMBERS FROM THE FOUNDATION STONE TO THE 'C' LAYER ABOVE.	3, 4	NO COMPACTION REQUIRED.
(A)	FOUNDATION STONE BELOW CHAMBERS FROM THE SUBGRADE UP TO THE FOOT (BOTTOM) OF THE CHAMBER.	3, 4	PLATE COMPACT OR ROLL TO ACHIEVE A 95% STANDARD PROCTOR DENSITY.

PLEASE NOTE:
 1. THE LISTED AASHTO DESIGNATIONS ARE FOR GRADATIONS ONLY. THE STONE MUST ALSO BE CLEAN, CRUSHED, ANGULAR. FOR EXAMPLE, A SPECIFICATION FOR #4 STONE WOULD STATE: "CLEAN, CRUSHED, ANGULAR NO. 4 (AASHTO M43) STONE."
 2. AS AN ALTERNATE TO PROCTOR TESTING AND FIELD DENSITY MEASUREMENTS ON OPEN GRADED STONE, STORMTECH COMPACTION REQUIREMENTS ARE MET FOR 'A' LOCATION MATERIALS WHEN PLACED AND COMPACTED IN 9" (229 mm) (MAX) LIFTS USING TWO FULL COVERAGES WITH AN APPROPRIATE COMPACTOR.

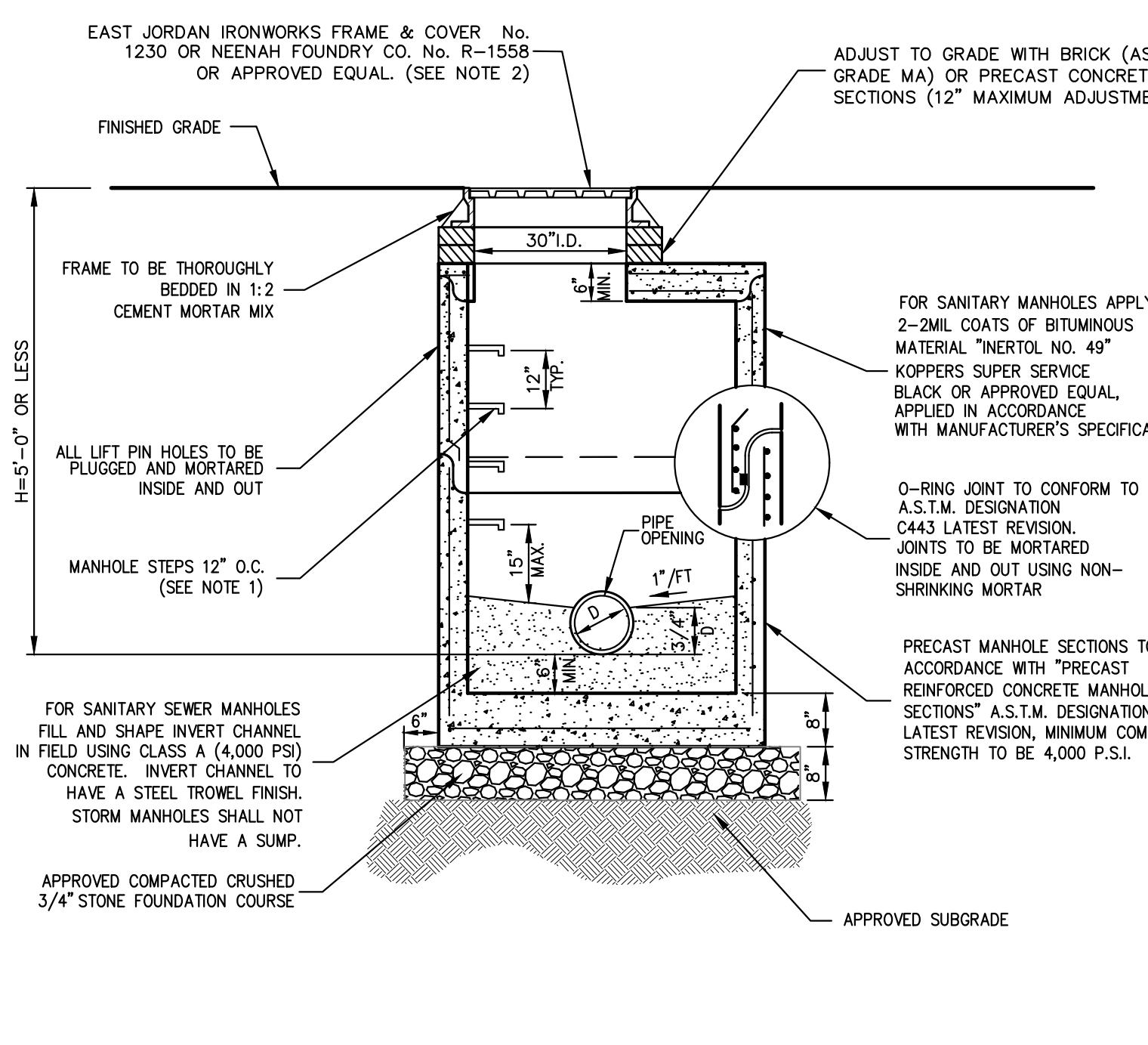


SECTION AT DETENTION AND WATER QUALITY CONTROL

INFILTRATION SYSTEM

(STORMTECH CHAMBERS MC-4500)

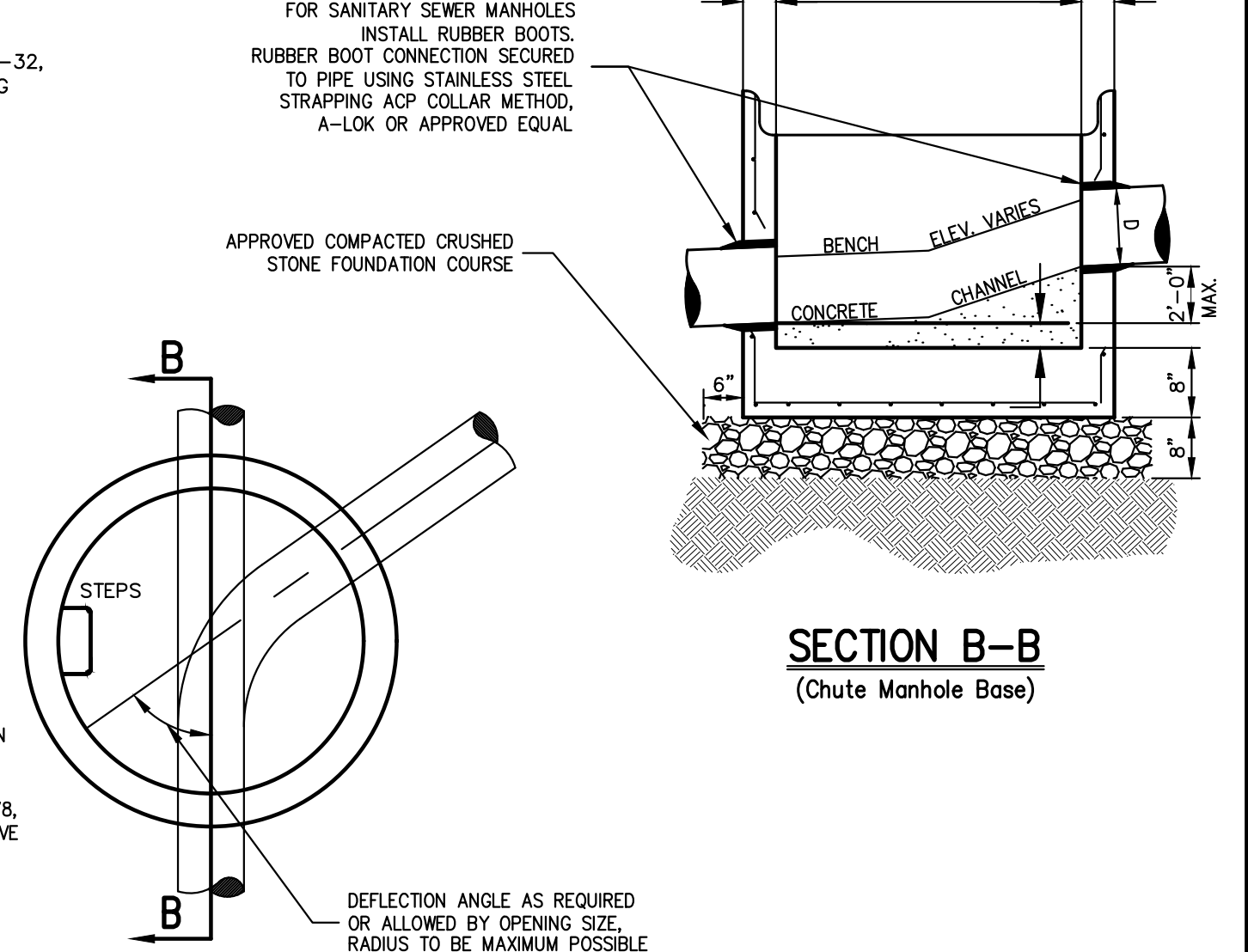
16



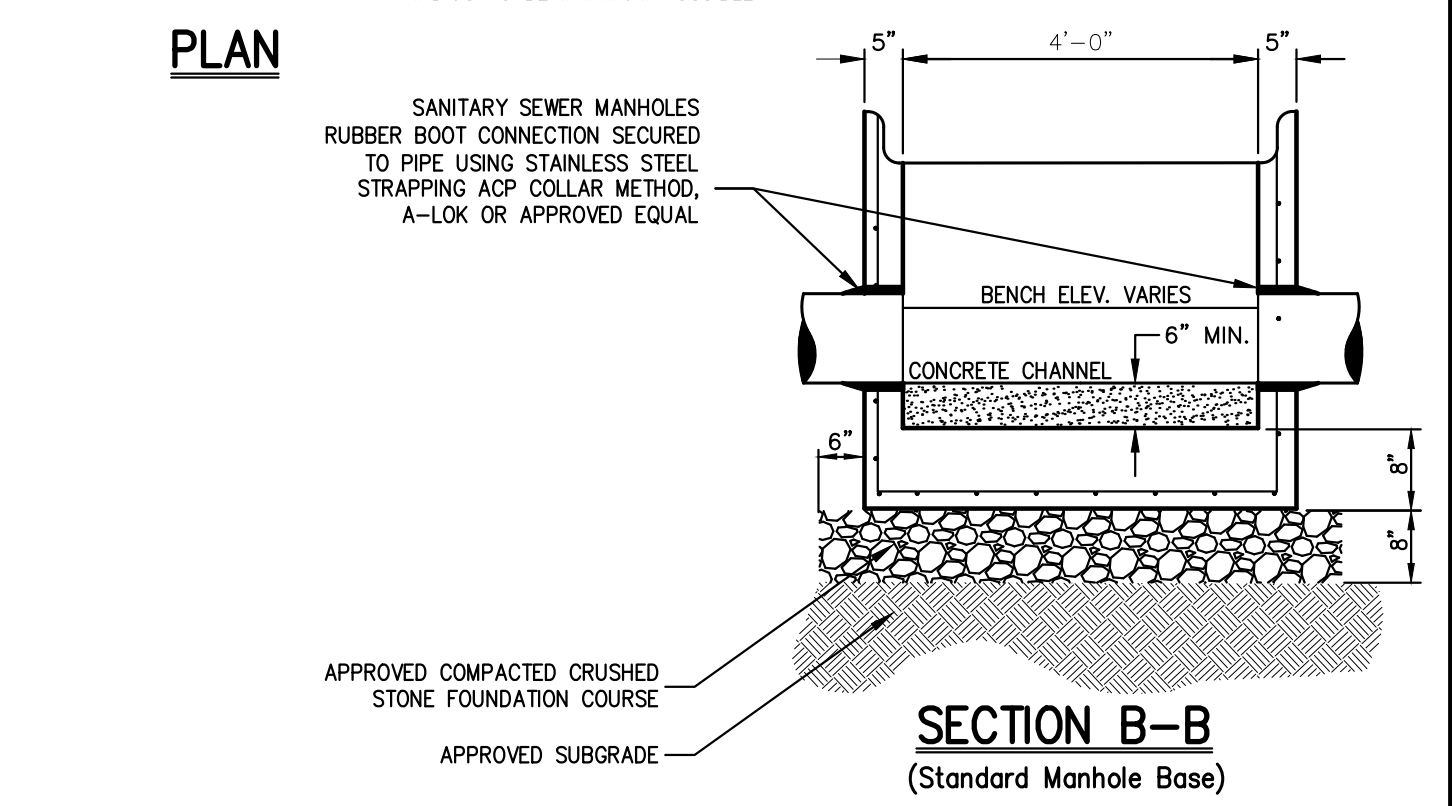
MANHOLE (TYPE A)

(H < 5'-0")

- NOTES:**
- MANHOLE STEPS SHALL BE CAST IRON NEENAH No. R-1981-0 OR CAMPBELL FOUNDRY No. 2588-1 OR POLYPROPYLENE COATED STEEL (SEE SPECIFICATIONS) OR APPROVED EQUAL.
 - UNLESS OTHERWISE SPECIFIED, SANITARY SEWER MANHOLES SHALL HAVE LETTERS "SEWER" AND STORM DRAIN MANHOLES SHALL HAVE LETTERS "DRAIN" CAST ON COVER. THE COVERS FOR STORM DRAIN MANHOLES ONLY SHALL HAVE VENT HOLES.
 - MANHOLES SHALL MEET OR EXCEED A.S.T.M. AND O.S.H.A. REQUIREMENTS.
 - SEE "NOTES PERTAINING TO MANHOLES" UNDER "UTILITY NOTES" ON DRAWING C-901

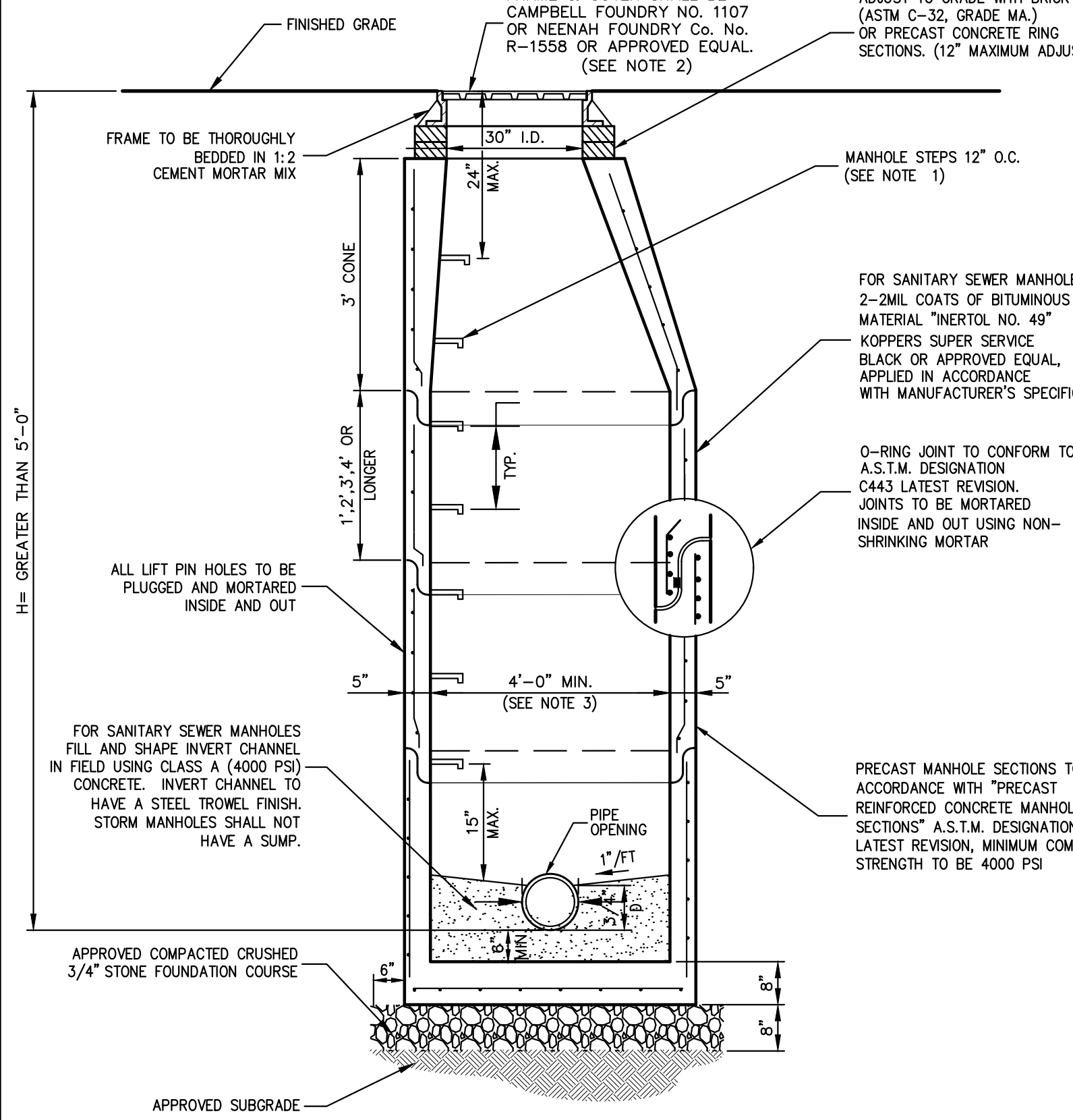


SECTION B-B (Chute Manhole Base)



SECTION B-B (Standard Manhole Base)

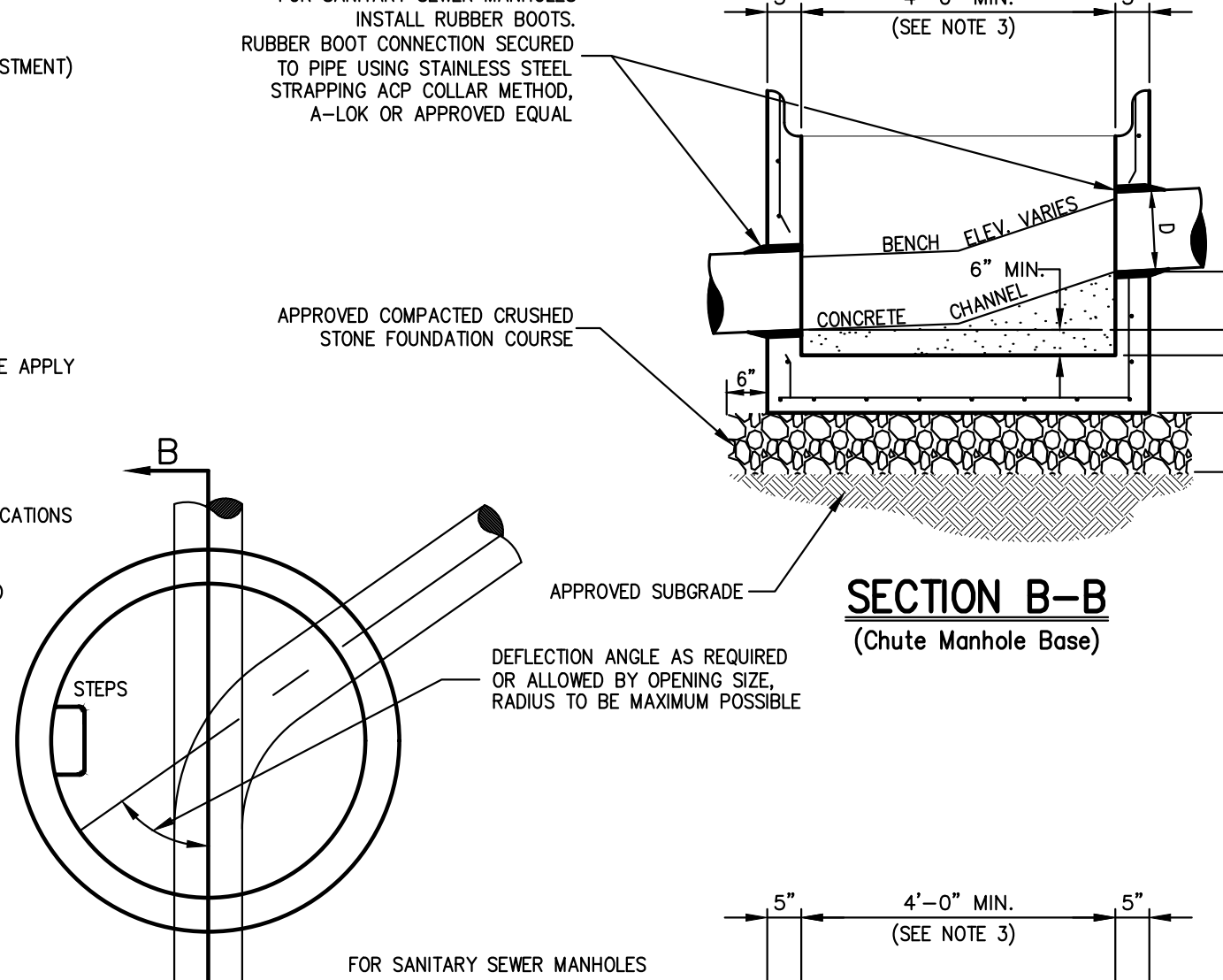
17



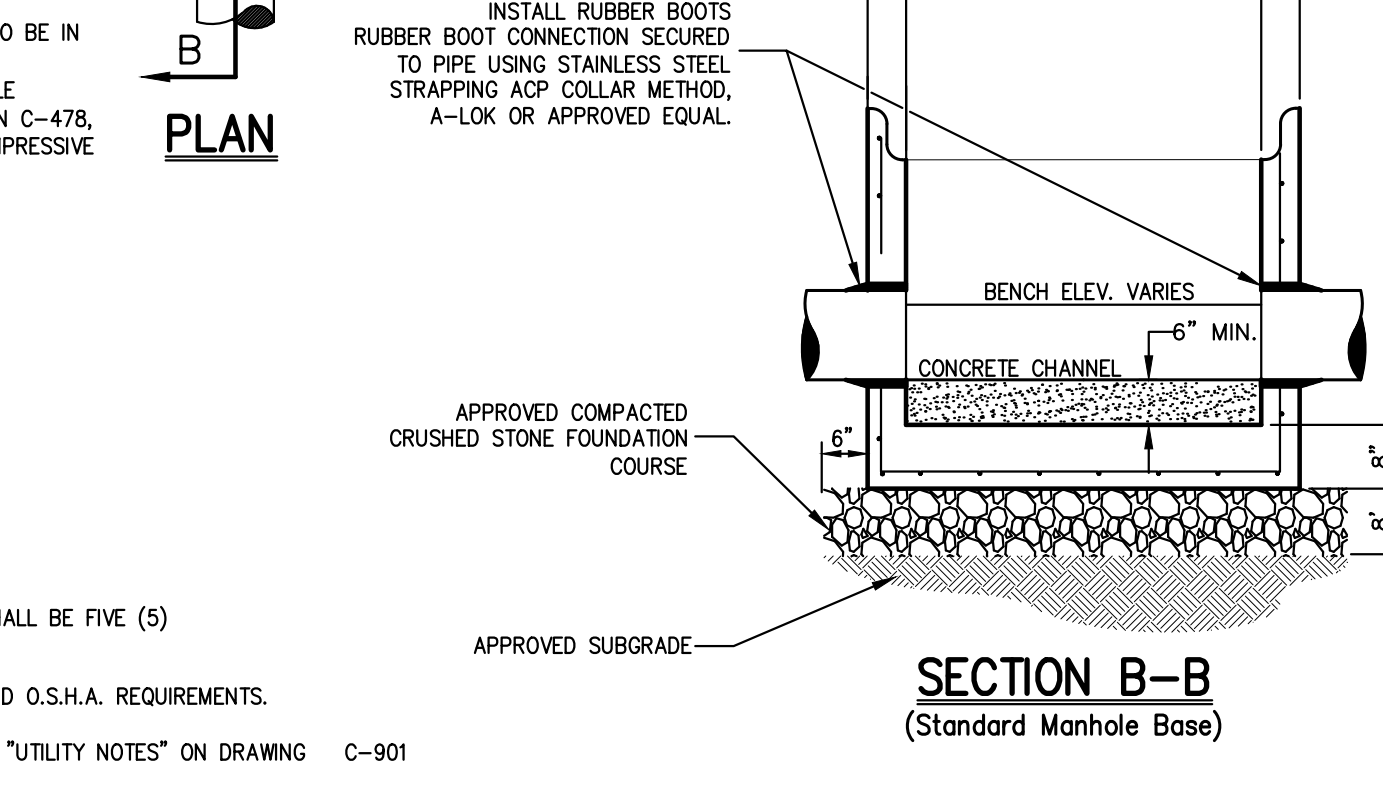
MANHOLE (TYPE B)

(H > 5'-0") < 10'-0")

- NOTES:**
- MANHOLE STEPS SHALL BE CAST IRON NEENAH No. R-1981-0 OR CAMPBELL FOUNDRY No. 2588-1 OR POLYPROPYLENE COATED STEEL (SEE SPECIFICATIONS) OR APPROVED EQUAL.
 - UNLESS OTHERWISE SPECIFIED, SANITARY SEWER MANHOLES SHALL HAVE LETTERS "SEWER" AND STORM DRAIN MANHOLES SHALL HAVE LETTERS "DRAIN" CAST ON COVER. THE COVERS FOR STORM DRAIN MANHOLES ONLY SHALL HAVE VENT HOLES.
 - MANHOLES WITH DEPTH (H) 10' OR GREATER SHALL BE FIVE (5) FEET IN DIAMETER.
 - MANHOLES SHALL MEET OR EXCEED A.S.T.M. AND O.S.H.A. REQUIREMENTS.
 - SEE "NOTES PERTAINING TO MANHOLES" UNDER "UTILITY NOTES" ON DRAWING C-901



SECTION B-B (Chute Manhole Base)



SECTION B-B (Standard Manhole Base)

18

NOT FOR CONSTRUCTION

Date	12/30/19
Revision	
No.	1. REVISED PER CITY COMMENTS

JMC Planning, Engineering, Landscape Architecture & Land Surveying, PLLC
 JMC Site Development Consultants, LLC
 John Meyer Consulting, Inc.
 120 BEDFORD ROAD - ARMONK, NY 10504
 voice 914.273.5225 • fax 914.273.2102
 www.jmcplic.com

JMC
 CONSTRUCTION DETAILS
 BEACON COMMONS
 16 WEST MAIN STREET
 BEACON, NY 12508

ANY ALTERATION OF PLANS, SPECIFICATIONS, PLATS AND REPORTS BEARING THE SEAL OF A LICENSED PROFESSIONAL ENGINEER OR LICENSED LAND SURVEYOR IS A VIOLATION OF SECTION 7209 OF THE NEW YORK STATE EDUCATION LAW, EXCEPT AS PROVIDED FOR BY SECTION 7209, SUBSECTION 2.

Drawn:	AH	Approved:	SS
Scale:	NOT TO SCALE		
Date:	10/29/2019		
Project No.:	18119		
1819-ITEMS:	C-902		
Drawing No.:	C-902		
	C-902 (Sheet 16 of 24)		