



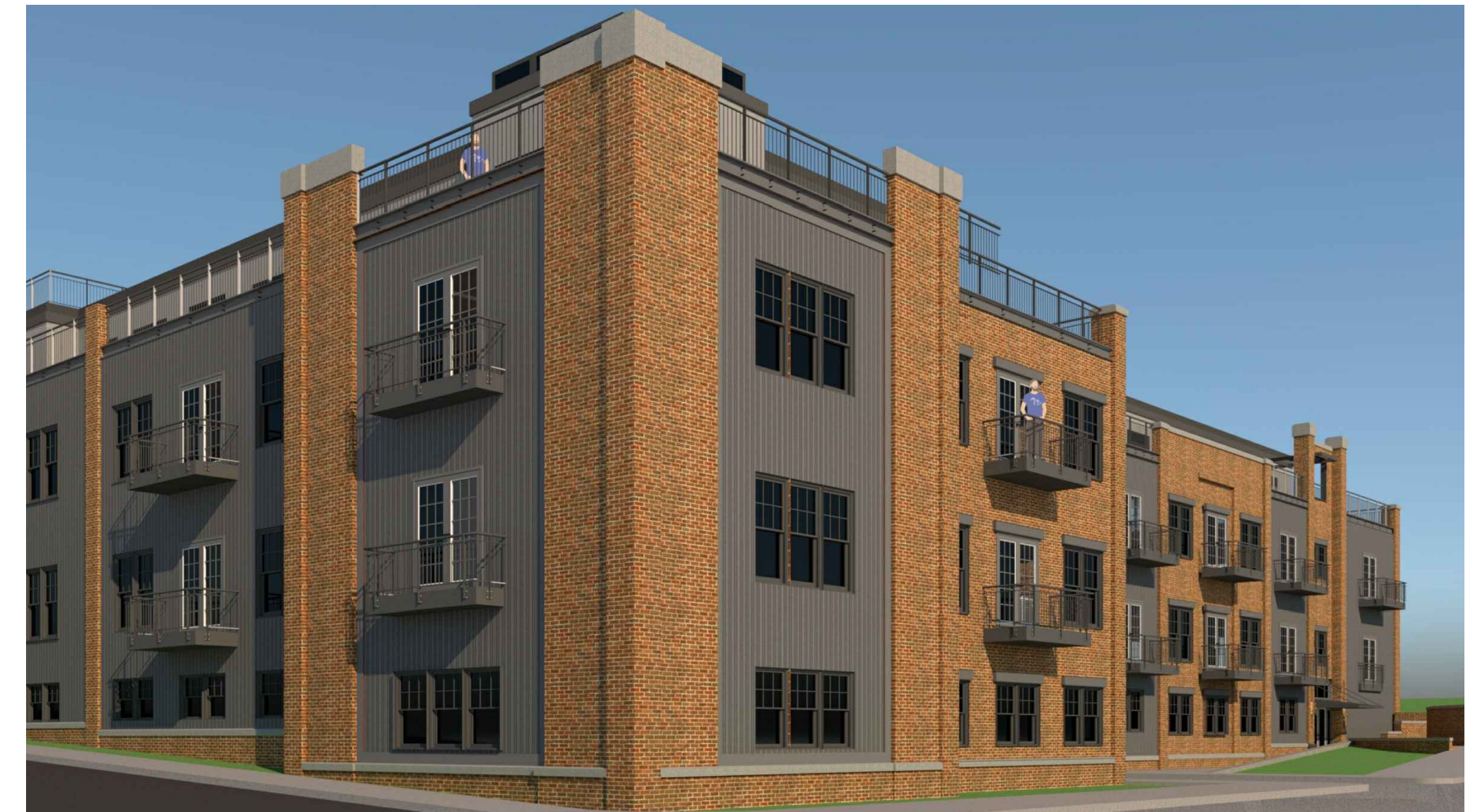
ELEVATION - WEST MAIN STREET

STANDING SEAM METAL ROOF. COLOR: GRAY
 STANDING SEAM METAL SIDING. COLOR: GRAY
 PAINTED METAL RAILING. COLOR: BLACK
 CLAD ALUMINUM WINDOWS - ANDERSEN 400 SERIES OR APPROVED EQUAL. COLOR: BLACK
 BRICK SIDING - GLEN GARY 56DD OR APPROVED EQUAL
 HARDIE BOARD VERTICAL BOARD AND BATTEN SIDING. COLOR: IRON GRAY

STANDING SEAM METAL ROOF. COLOR: GRAY
 STANDING SEAM METAL SIDING. COLOR: GRAY
 PAINTED METAL RAILING. COLOR: BLACK
 CLAD ALUMINUM WINDOWS - ANDERSEN 400 SERIES OR APPROVED EQUAL. COLOR: BLACK
 BRICK SIDING - GLEN GARY 56DD OR APPROVED EQUAL
 HARDIE BOARD VERTICAL BOARD AND BATTEN SIDING. COLOR: IRON GRAY



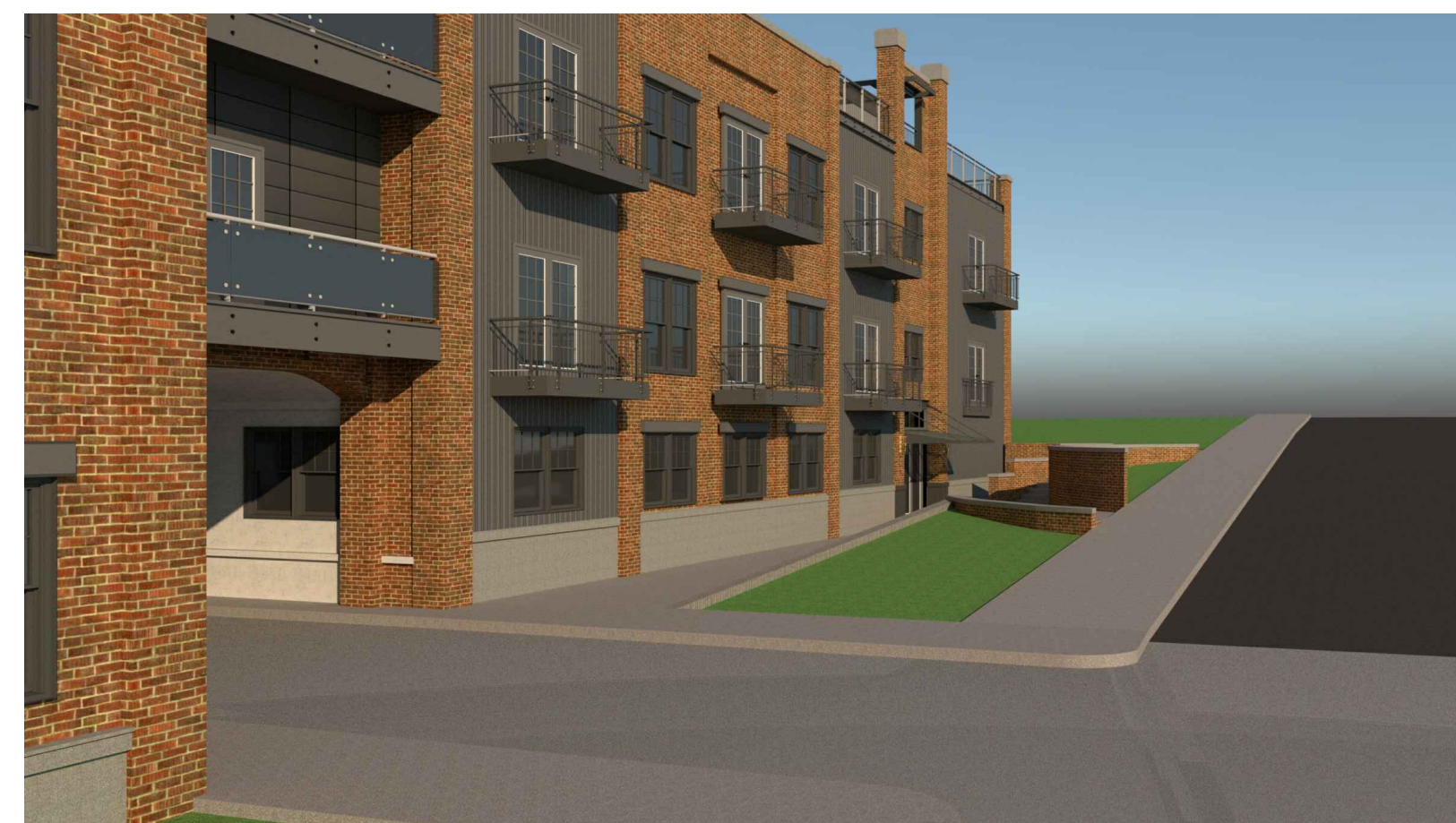
ELEVATION - BANK STREET



PERSPECTIVE - CORNER OF WEST MAIN STREET & BANK STREET



PERSPECTIVE - CORNER OF WEST MAIN STREET & BANK STREET



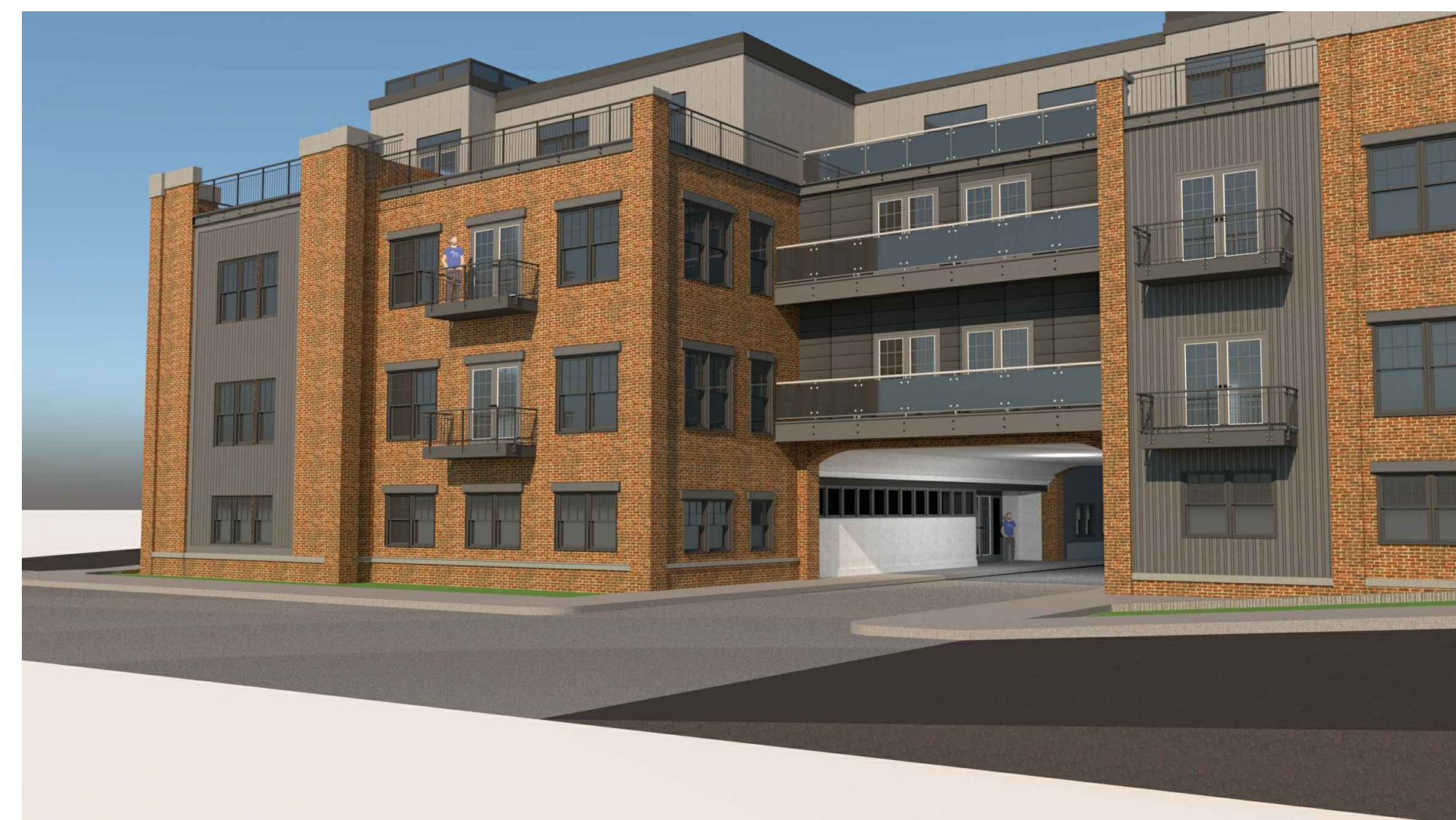
PERSPECTIVE - LOOKING UP WEST MAIN STREET



PERSPECTIVE - PORTE COCHERE ENTRY



PERSPECTIVE - WEST MAIN STREET ENTRANCE



PERSPECTIVE - LOOKING ACROSS WEST MAIN STREET TO PORTE COCHERE ENTRY

APPLICANT/OWNER: FARRELL BUILDING COMPANY
 2317 MONTAUK HIGHWAY
 BRIDGEHAMPTON, NY 11932
 ARCHITECT: ARYEH SIEGEL ARCHITECT
 84 MASON CIRCLE
 BEACON, NY 12508

JMC Planning, Engineering, Landscape Architecture & Land Surveying, PLLC
 JMC Site Development Consultants, LLC
 John Meyer Consulting, Inc.
 120 BEDFORD ROAD - ARMONK, NY 10504
 voice: 914.273.5225 - fax: 914.273.2102
 www.jmcplc.com



ELEVATIONS
 BEACON COMMONS
 16 WEST MAIN STREET
 BEACON, NY 12508

PROGRESS PLOTTING

Drawn: PW Approved: AS
 Scale: NTS
 Date: 09/24/2019
 Project No: 18119

Drawing No: A-200

ANY ALTERATION OF PLANS, SPECIFICATIONS, PLATS AND REPORTS BEARING THE SEAL OF A LICENSED PROFESSIONAL ENGINEER OR LICENSED LAND SURVEYOR IS A VIOLATION OF SECTION 7209 OF THE NEW YORK STATE EDUCATION LAW, EXCEPT AS PROVIDED FOR BY SECTION 7209, SUBSECTION 2.

No.	Revision	Date	By
1	REVISED PER PLANNING BOARD COMMENTS	11/26/19	AJS
2	REVISED PER PLANNING BOARD COMMENTS	12/31/19	AJS

Previous Editions Obsolete

NOT FOR CONSTRUCTION

COPYRIGHT © 2019 BY JMC. All Rights Reserved. No part of this document may be reproduced, stored in a retrieval system, or transmitted in any form or by any means, electronic, mechanical, photocopying, recording or otherwise, without the prior written permission of JMC PLANNING, ENGINEERING, LANDSCAPE ARCHITECTURE & LAND SURVEYING, PLLC. ANY SITE DEVELOPMENT CONSULTANTS, LLC. ANY MODIFICATIONS OR ALTERATIONS TO THIS DOCUMENT WITHOUT THE WRITTEN PERMISSION OF JMC SHALL BE MADE AT THE USER'S RISK.