

REVISIONS:			
NO.	DATE	DESCRIPTION	BY
1	12/25/18	NO CHANGE	AJS
2	02/22/19	REVISED PER PLANNING BOARD COMMENTS	AJS
3	03/28/19	NO CHANGE	AJS
4	04/30/19	NO CHANGE	AJS
5	05/28/19	REVISED PER PLANNING BOARD COMMENTS	AJS



**View from Tioronda Avenue**

Not to Scale



**View of Garage / Workshop**

Not to Scale



**Elevation: North**

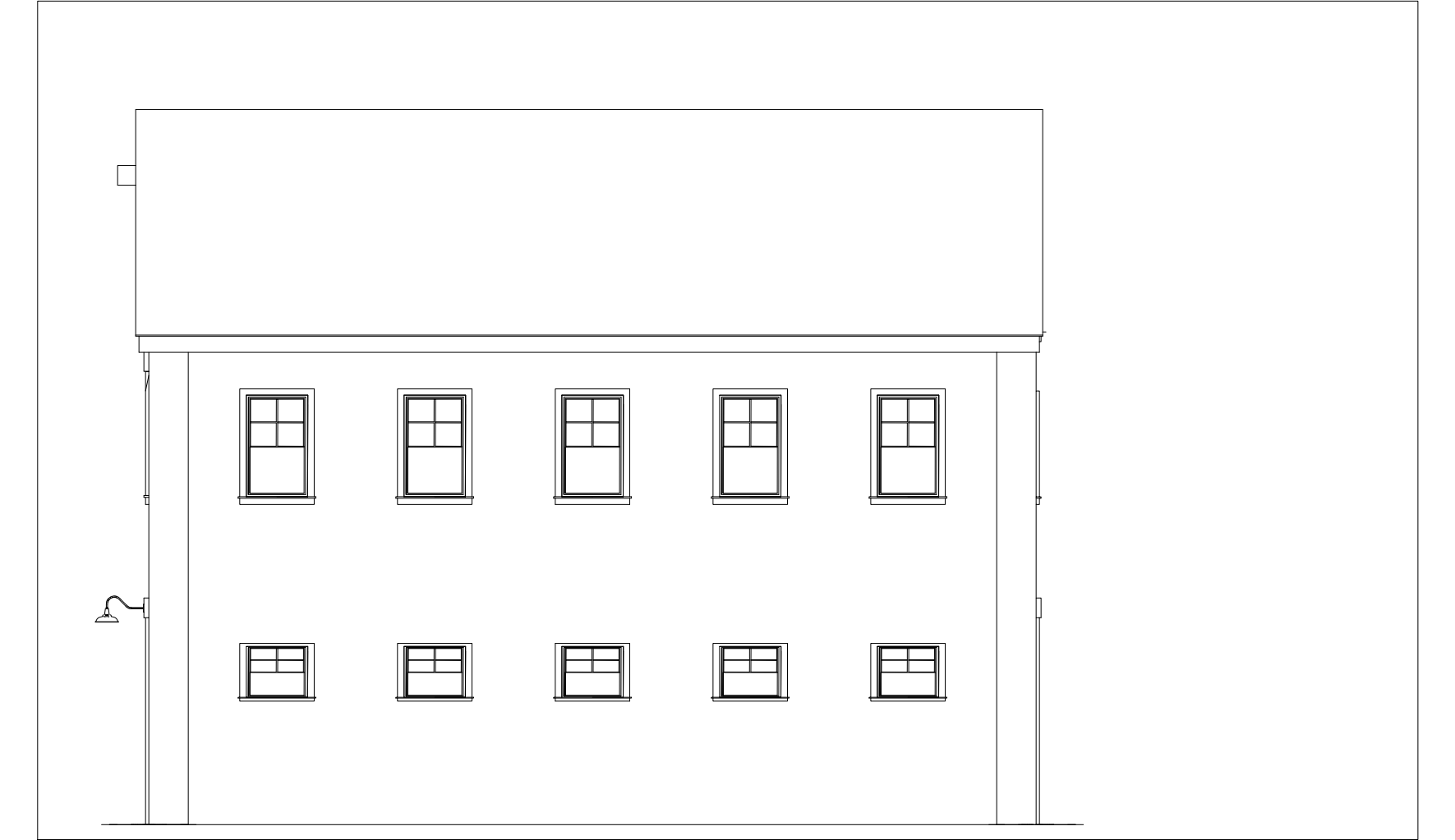
$\frac{1}{8}'' = 1'-0''$

**ROOF:**  
GALVALUME RIBBED ROOFING AND SHEET METAL EAVE, GALVALUME GUTTERS AND LEADERS

**WINDOWS:**  
DOUBLE GLAZED INSULATED WINDOWS (ANDERSEN 400 SERIES OR APPROVED EQUAL), COLOR: BLACK. PROVIDE WOOD LINTEL OVER WINDOWS IN BRICK WALLS.

**GARAGE DOORS:**  
SECTIONAL GARAGE DOORS WITH CLEAR GLASS PANELS. COLOR: BLACK

**BRICK:**  
GLEN GARY 56DD OR APPROVED EQUAL



**Elevation: West**

$\frac{1}{8}'' = 1'-0''$

**ROOF BULKHEADS:**  
CORTEX STEEL PANELS

**TRIM:**  
PAINTED ALUMINUM PROFILES. COLOR: BLACK

**RAILING:**  
42" HIGH PAINTED STEEL RAILING WITH 4" X 4" GRID BALUSTER

**WINDOWS:**  
DOUBLE GLAZED INSULATED WINDOWS (ANDERSEN 400 SERIES OR APPROVED EQUAL), COLOR: BLACK

**SIDING:**  
GALVALUME VERTICAL RIBBED SIDING

**BRICK:**  
GLEN GARY 56DD OR APPROVED EQUAL

**RETAINING WALL:**  
REDI-ROCK (OR APPROVED EQUAL) COBBLESTONE. COLOR: GRAY



**Elevation: East**

$\frac{1}{8}'' = 1'-0''$



**Aerial View**

Not to Scale



**Elevation: North (South Similar)**

$\frac{1}{8}'' = 1'-0''$

**BALCONY:**  
CONCRETE DECK WITH PAINTED STEEL EDGE AND COLUMNS. COLOR: BLACK

**STAIR:**  
STEEL OPEN GRATE STAIR AND RAILING. COLOR: BLACK

**GARAGE DOOR:**  
SECTIONAL GARAGE DOOR WITH OPAQUE GLASS PANELS. COLOR: BLACK

**ROOF BULKHEADS:**  
CORTEX STEEL PANELS

**TRIM:**  
PAINTED ALUMINUM PROFILES. COLOR: BLACK

**RAILING:**  
42" HIGH PAINTED STEEL RAILING WITH 4" X 4" GRID BALUSTER

**WINDOWS:**  
DOUBLE GLAZED INSULATED WINDOWS (ANDERSEN 400 SERIES OR APPROVED EQUAL), COLOR: BLACK

**SIDING:**  
GALVALUME VERTICAL RIBBED SIDING

**BRICK:**  
GLEN GARY 56DD OR APPROVED EQUAL

**RETAINING WALL:**  
REDI-ROCK (OR APPROVED EQUAL) COBBLESTONE. COLOR: GRAY



**Elevation: West**

$\frac{1}{8}'' = 1'-0''$