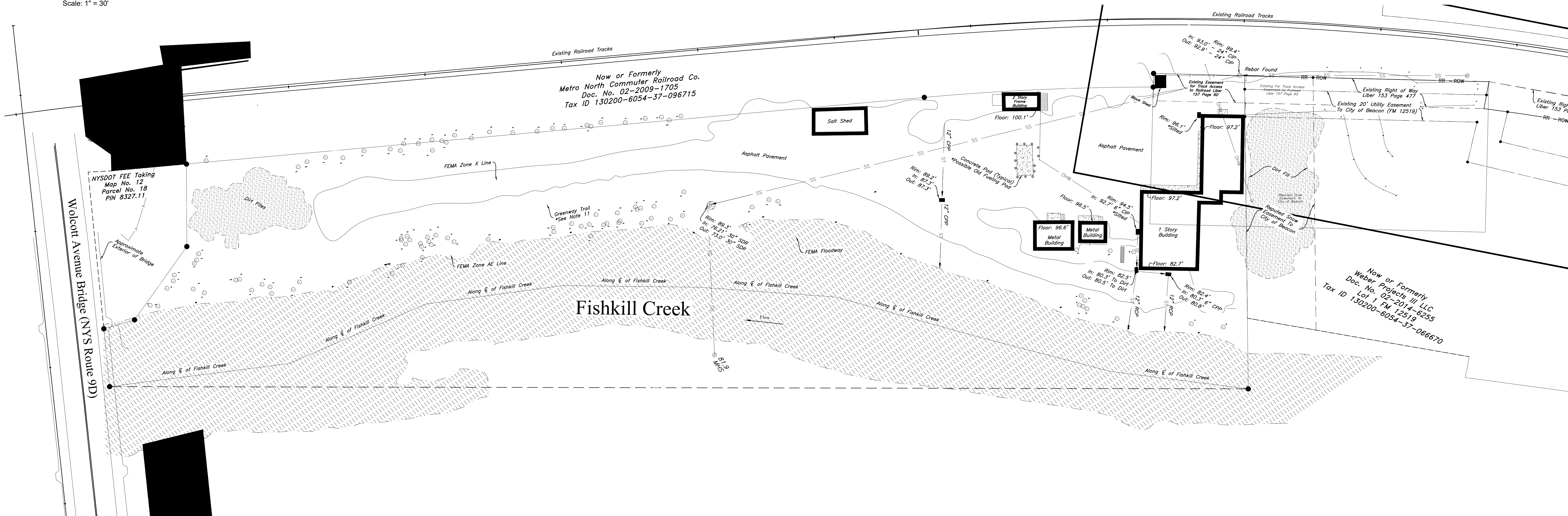


Demolition Plan

Scale: 1" = 30'



Existing Conditions Plan

Scale: 1" = 30'

TOPOGRAPHIC INFORMATION AND
EXISTING CONDITIONS INFORMATION
BASED ON THE SURVEY BY TEC LAND
SURVEYING, P.C DATED JULY 12, 2018



POLE MOUNTED LIGHT (L1A)
SELUX LIGHTING "BETA PENDANT" POLE MOUNTED
100W FIXTURE. MODEL #BPC-LR2-1-H100-BK-120-HS-PC
WITH LOW GLARE CUTOFF SHIELD. COLOR: BLACK.
PHOTOCELL CONTROL. OR APPROVED EQUAL.
MOUNTING HEIGHT ON A35 SERIES BLACK ALUMINUM
POLE = 10 FEET

POLE MOUNTED LIGHT (L1B)
SELUX LIGHTING "BETA PENDANT" POLE MOUNTED
150W FIXTURE. MODEL #BPC-LR2-1-H150-BK-120-HS-PC
WITH LOW GLARE CUTOFF SHIELD. COLOR: BLACK.
PHOTOCELL CONTROL. OR APPROVED EQUAL.
MOUNTING HEIGHT ON A35 SERIES BLACK ALUMINUM
POLE = 12 FEET

NOTE: AS AN ALTERNATE, THE OWNER MAY INSTALL
EQUIVALENT WATTAGE LED FIXTURES IN PLACE OF
THE INCANDESCENT FIXTURES SHOWN. LED LIGHTING
WILL MEET THE SAME SPECIFICATIONS FOR LOW
GLARE CUTOFF CONTROLS, EITHER BY SHIELDING OR
INTERNAL CONTROLS.

NOTE: ALL EXTERIOR LIGHTING ON THE SITE SHALL BE DIRECTED
AND/OR SHIELDED SO AS NOT TO CAUSE ANY OBJECTIONABLE GLARE
OBSERVABLE FROM NEIGHBORING STREETS AND PROPERTIES. THE
SOURCE (BULBS) OF SUCH LIGHTING SHALL NOT BE VISIBLE FROM SAID
NEIGHBORING STREETS AND PROPERTIES. PHOTOMETRIC DIAGRAMS
ARE SHOWN WITH SHIELDED CONDITIONS.



WALL MOUNTED LIGHT (L2)
SELUX LIGHTING "BETA PENDANT" WALL MOUNTED
FIXTURE. MODEL #BPC-LR2-1-H100-BK-120-HS-PC
WITH LOW GLARE CUTOFF SHIELD. COLOR: BLACK.
PHOTOCELL CONTROL. OR APPROVED EQUAL.
MOUNTING HEIGHT = 12 FEET



WALL MOUNTED HOUSE LIGHT (BL1)
BARNLIGHT ELECTRIC WALL MOUNTED FIXTURE.
MODEL #WESCO GOOSENECK. 100W. COLOR: DARK
GREEN METAL. SHADE. OR APPROVED EQUAL.
MOUNTING HEIGHT = 7 FEET

NOTE THAT THE MANUFACTURER DOES NOT PROVIDE
FOOTCANDLE DIAGRAMS FOR THIS FIXTURE. THE
FIXTURE IS SHADED AND DOES NOT EMIT GLARE.

REVISIONS:			
NO.	DATE	DESCRIPTION	BY
1	12/25/18	NO CHANGE	AJS
2	02/22/19	NO CHANGE	AJS
3	03/26/19	REVISED PER PLANNING BOARD COMMENTS	AJS
4	04/30/19	REVISED PER PLANNING BOARD COMMENTS	AJS
5	05/28/19	REVISED PER PLANNING BOARD COMMENTS	AJS