

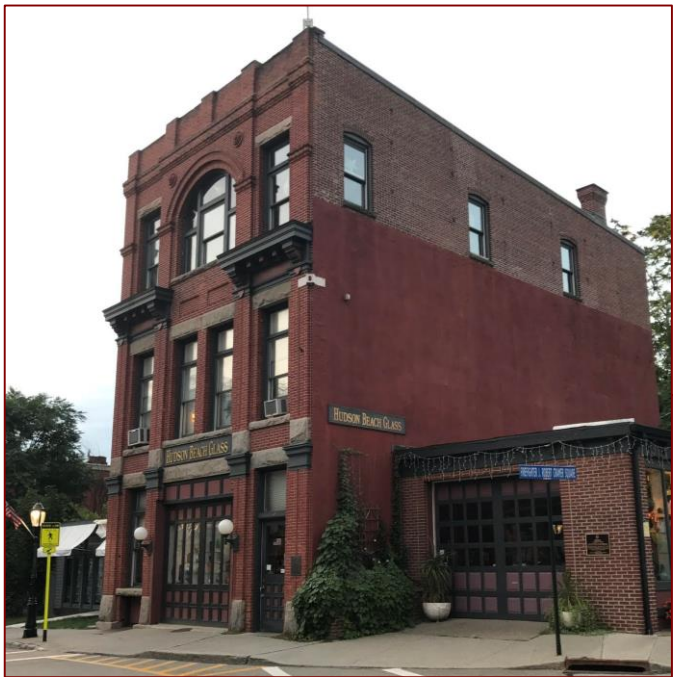


**Model New Infill Building:
Inn at Beacon, 151 Main Street
4 Stories with 4th Floor Stepback
\$1,058,000 Assessed Value
\$18,561,404 / Acre**

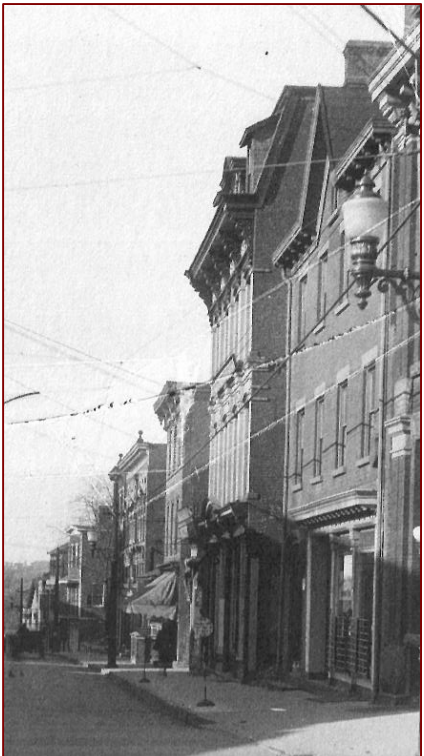




Bank at Corner of Bank Square, 45 Feet High



**Tompkins Fire House,
47 Feet High**



154 Main St, 45 Feet High

**According to early 1900s Sanborn Maps,
at least 5 buildings in the West End Historic
District were 4 stories or over 40' high.**



Holland Hotel, 43 Feet High Plus Towers

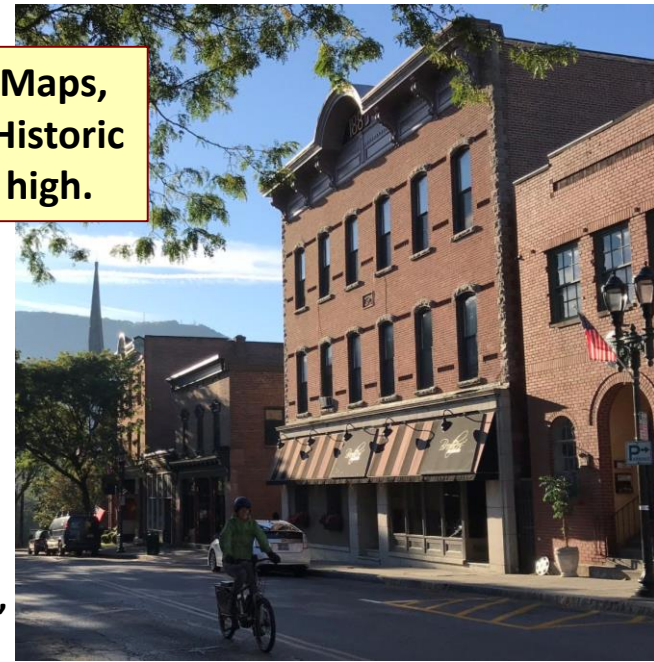


**1929 Mechanics Savings Bank,
61 Feet High**

**According to early 1900s Sanborn Maps,
at least 8 buildings in the East End Historic
District were 4 stories or over 40' high.**



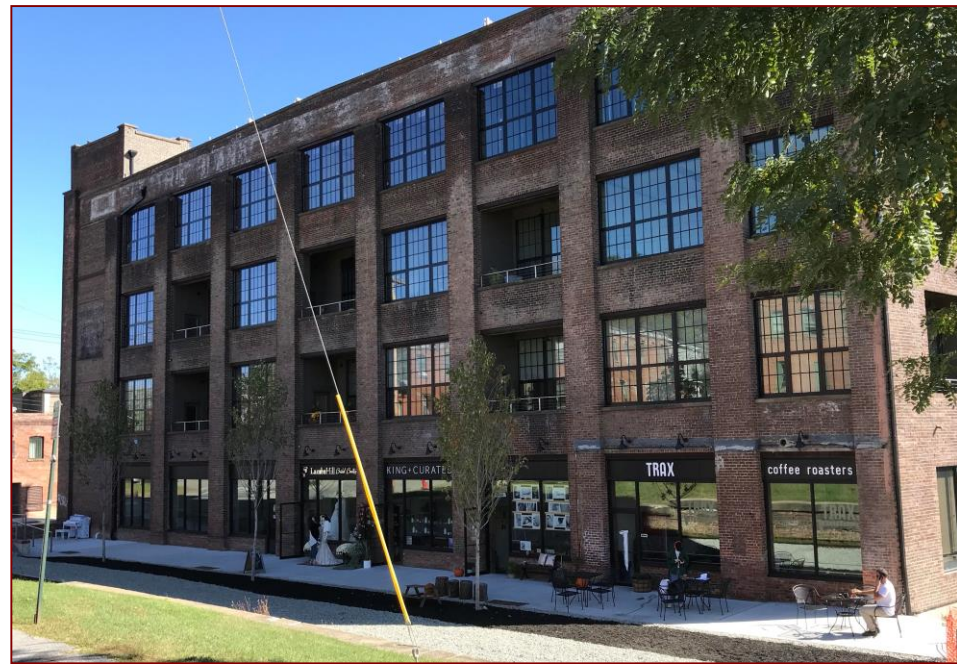
The Beacon Hotel, Four Stories, 47 Feet High Plus Towers



**465 Main Street,
44 Feet High**



494 and 500 Main Street, Four Stories



1 East Main Street, Four Stories, 52 Feet High



Example of Historic 3-Story Building Taller Than a 4-Story Building

New Four-Story Buildings:



Previous Buildings



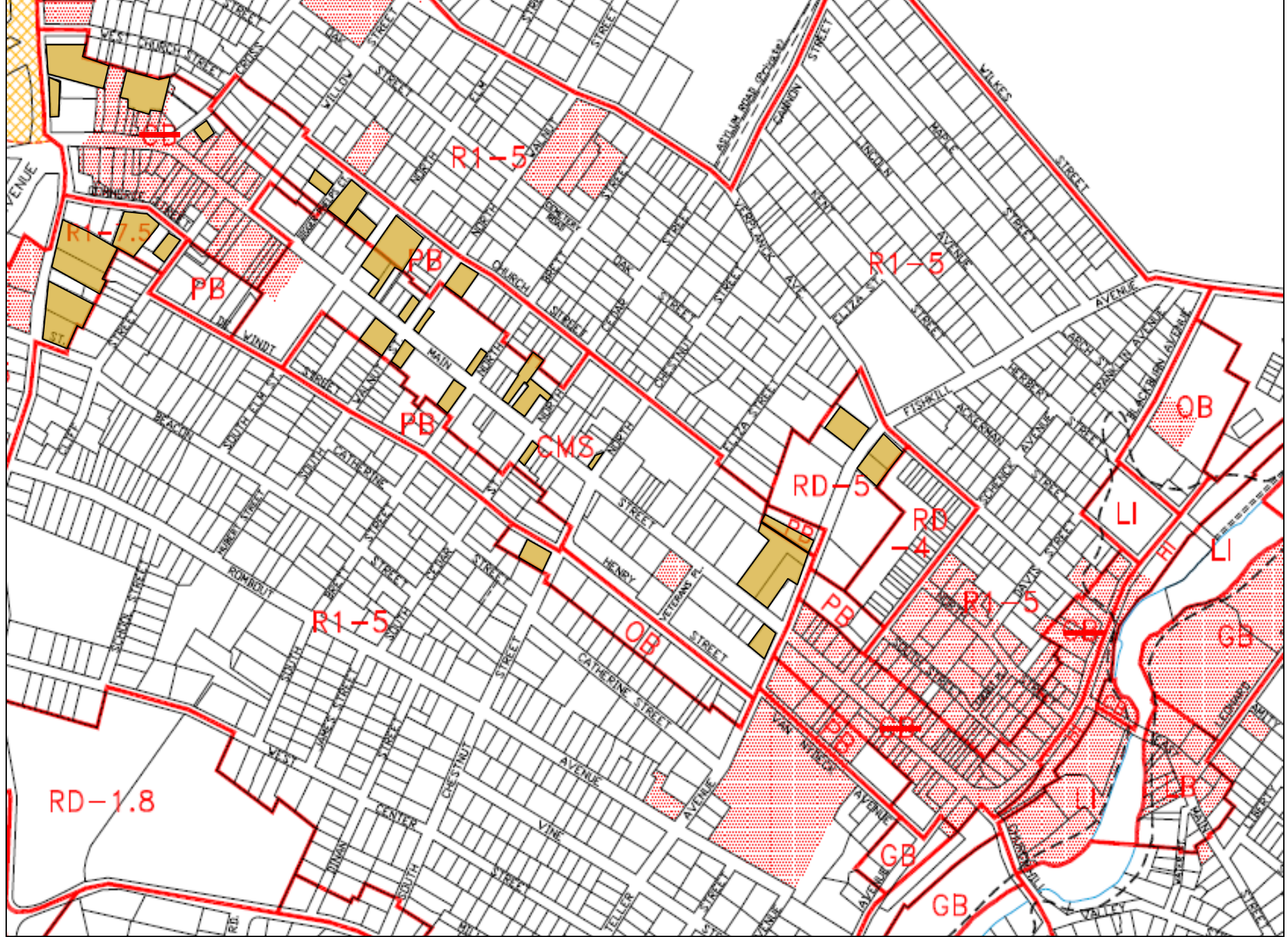
226 Main Street



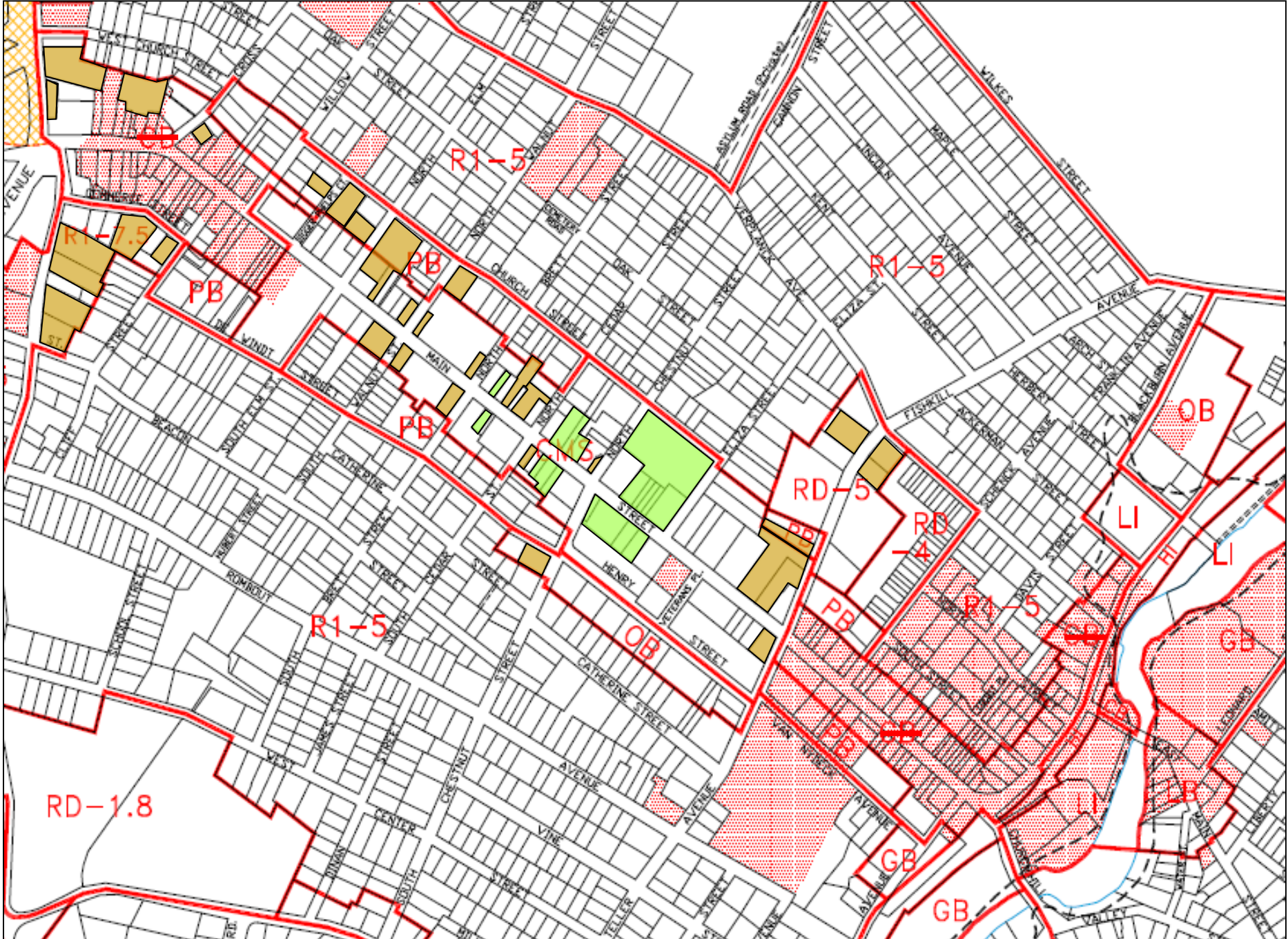
249 Main Street



Recent Street View



Additional Potential Historic Properties 



Central Main Street Parcels Not Adjacent to Potential Historic Properties ■