

REVISIONS:			
NO.	DATE	DESCRIPTION	BY
1	12/25/18	NO CHANGE	AJS
2	02/22/19	REVISED PER PLANNING BOARD COMMENTS	AJS
3	03/28/19	NO CHANGE	AJS
4	04/30/19	NO CHANGE	AJS
5	05/28/19	REVISED PER PLANNING BOARD COMMENTS	AJS



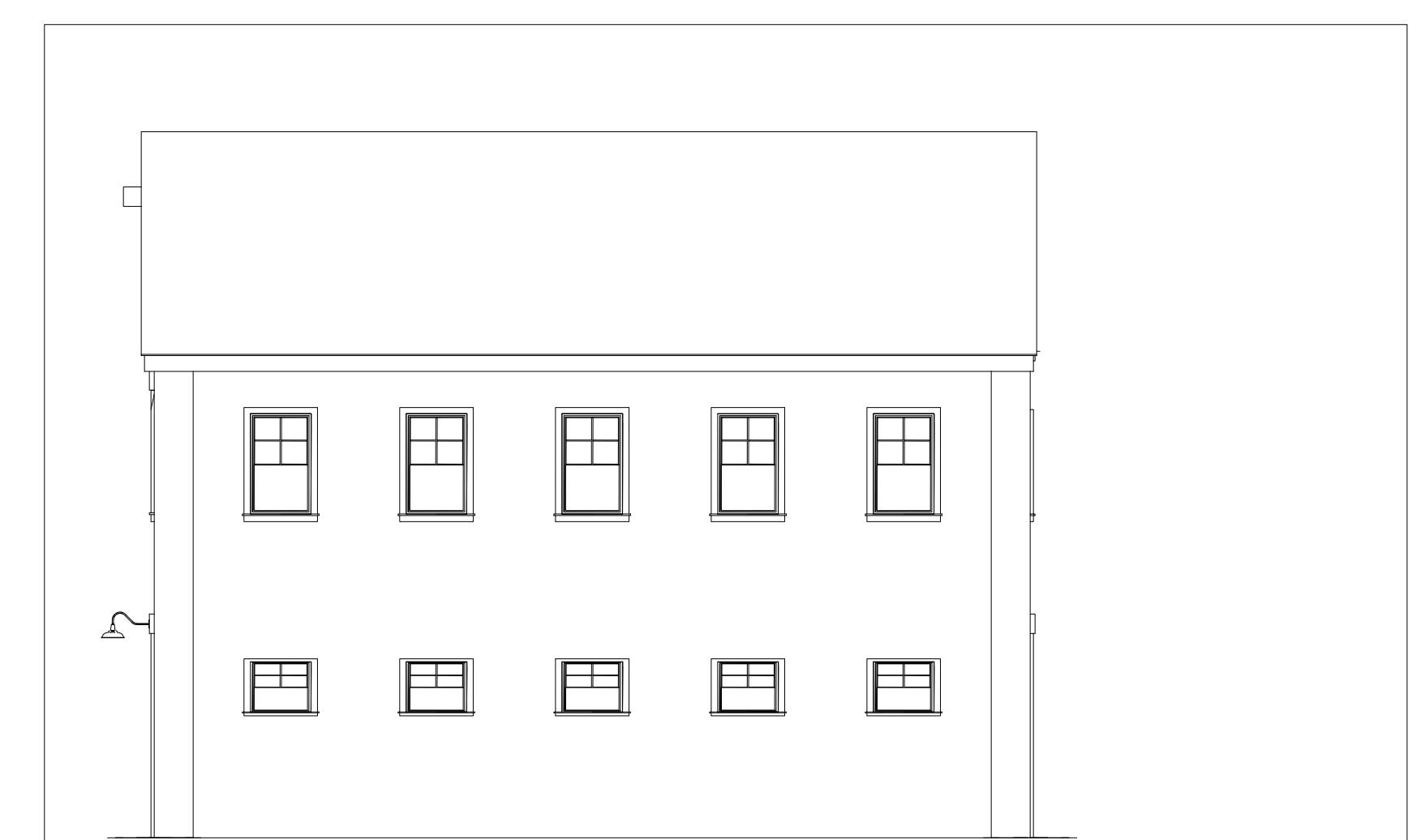
View from Tioronda Avenue
Not to Scale



View of Garage / Workshop
Not to Scale



Elevation: North
1/8" = 1'-0"



Elevation: West
1/8" = 1'-0"

ROOF:
GALVALUME RIBBED ROOFING AND SHEET METAL EAVE, GALVALUME GUTTERS AND LEADERS

WINDOWS:
DOUBLE GLAZED INSULATED WINDOWS (ANDERSEN 400 SERIES OR APPROVED EQUAL), COLOR: BLACK. PROVIDE WOOD LINTEL OVER WINDOWS IN BRICK WALLS.

GARAGE DOORS:
SECTIONAL GARAGE DOORS WITH CLEAR GLASS PANELS. COLOR: BLACK

BRICK:
GLEN GARY 56DD OR APPROVED EQUAL

ROOF BULKHEADS:
COR-TEN STEEL PANELS

TRIM:
PAINTED ALUMINUM PROFILES. COLOR: BLACK

RAILING:
42" HIGH PAINTED STEEL RAILING WITH 4" X 4" GRID BALUSTER

WINDOWS:
DOUBLE GLAZED INSULATED WINDOWS (ANDERSEN 400 SERIES OR APPROVED EQUAL), COLOR: BLACK

SIDING:
GALVALUME VERTICAL RIBBED SIDING

BRICK:
GLEN GARY 56DD OR APPROVED EQUAL

RETAINING WALL:
REDI-ROCK (OR APPROVED EQUAL) COBBLESTONE. COLOR: GRAY



Elevation: East
1/8" = 1'-0"

BALCONY:
CONCRETE DECK WITH PAINTED STEEL EDGE AND COLUMNS. COLOR: BLACK

STAIR:
STEEL OPEN GRATE STAIR AND RAILING. COLOR: BLACK

GARAGE DOOR:
SECTIONAL GARAGE DOOR WITH OPAQUE GLASS PANELS. COLOR: BLACK



Elevation: North (South Similar)
1/8" = 1'-0"

ROOF BULKHEADS:
COR-TEN STEEL PANELS

TRIM:
PAINTED ALUMINUM PROFILES. COLOR: BLACK

RAILING:
42" HIGH PAINTED STEEL RAILING WITH 4" X 4" GRID BALUSTER

WINDOWS:
DOUBLE GLAZED INSULATED WINDOWS (ANDERSEN 400 SERIES OR APPROVED EQUAL), COLOR: BLACK

SIDING:
GALVALUME VERTICAL RIBBED SIDING

BRICK:
GLEN GARY 56DD OR APPROVED EQUAL

RETAINING WALL:
REDI-ROCK (OR APPROVED EQUAL) COBBLESTONE. COLOR: GRAY



Elevation: West
1/8" = 1'-0"



Aerial View
Not to Scale

Site Plan Application
Sheet 6 of 12 - Renderings