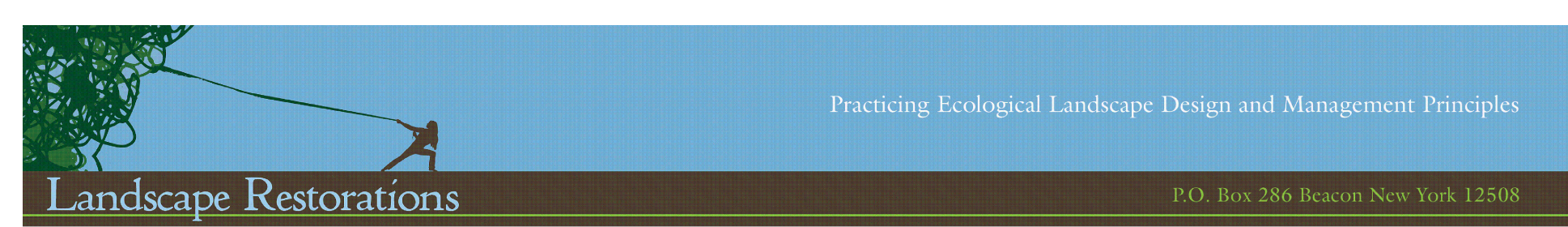
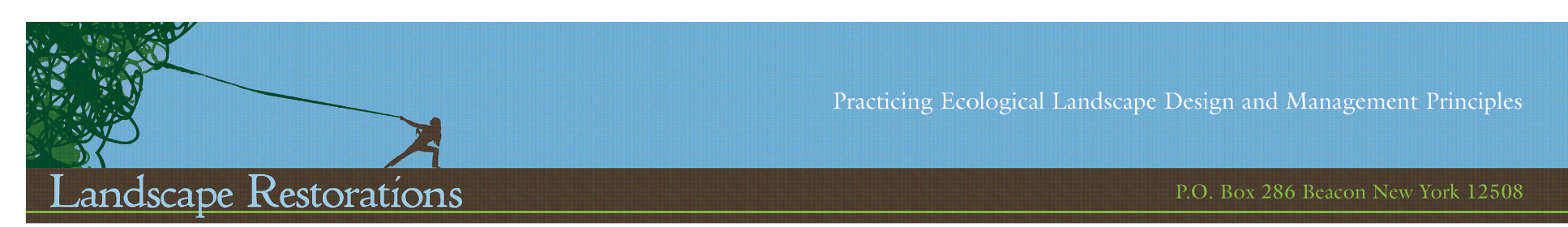


REVISIONS:				
NO.	DATE	DESCRIPTION	BY	
1	12/25/18	REVISED PER PLANNING BOARD COMMENTS	AJS	
2	02/22/19	REVISED PER PLANNING BOARD COMMENTS	AJS	
3	03/26/19	REVISED PER PLANNING BOARD COMMENTS	AJS	
4	04/30/19	REVISED PER PLANNING BOARD COMMENTS	AJS	
5	05/28/19	REVISED PER PLANNING BOARD COMMENTS	AJS	

QUANTITY	KEY	BOTANIC NAME	COMMON NAME	SIZE	Planting Time	AREA
<b>PLANT SCHEDULE PHASE ONE</b>						
Created and compiled by D. Adams on December 15, 2018						
<b>QUANTITY KEY</b>						
<b>FERNS</b>						
Trays	F-DP	<i>Dennstaedtia punctilobula</i>	Hay-scented fern	Plugs	Spring Fall	NM,CBE,CBW
Trays	F-DI	<i>Dryopteris intermedia</i>	Evergreen Wood Fern	Plugs	Spring Fall	CBE
Trays	F-CC	<i>Cheilanthes cinnamomea</i>	Cinnamon Fern	Quarts	Spring Fall	WR,CBE
Trays	F-PA	<i>Polystichum acrostichoides</i>	Christmas Fern	Plugs	Spring Fall	BE,NM,CBW,CBE
<b>GRASSES</b>						
Trays	G-AG	<i>Andropogon gerardii</i>	Big Bluestem	Plugs	Spring Summer	BE,NM,CBW
Trays	ECO-LAWN	<i>Buchloe dactyloides 'Texaco'</i>	Eco Lawn	Seed	Spring Summer	BE
Trays	G-CA	<i>Carex appalachica</i>	Appalachian Sedge	Plugs	Spring Summer	BE,CB,CBE,WR
Trays	G-CB	<i>Carex bromoides</i>	Bromlike Sedge	Plugs	Spring Summer	BE,CB,CBE,WR
Trays	G-CP	<i>Carex pensylvanica</i>	Sedge	Plugs	Spring Summer	BE,CB,CBE,WR
Trays	G-CL	<i>Chasmodon latifolia</i>	Northern Sea Oats	Plugs	Spring Summer	BE,CBE,CBW,HCS
Trays	G-PV	<i>Panicum virgatum</i>	Indian Switchgrass	Plugs	Spring Summer	BE,NM,HCS
Trays	G-SS	<i>Scirpochyrium scoparium</i>	Little Bluestem	Plugs	Spring Summer	BE,NM,HCS
<b>HERBACEOUS</b>						
Trays	H-AT	<i>Asclepias incarnata</i>	Swamp Milkweed	Plugs	Spring Summer	WR
Trays	H-AI	<i>Asclepias tuberosa</i>	Butterfly Milkweed	Plugs	Spring Summer	NM,CBE,CBW
Trays	H-AT	<i>Amsinon tabernaemontana</i>	Common Bluestar	Plugs	Spring Summer	WR, NM
Trays	H-A	Asters	Aster(NY and Woodland)	Plugs	Spring Summer	WR, NM
Trays	H-IC	<i>Iris cristata</i>	Crested Iris	Plugs	Spring Summer	WR
Trays	H-PR	<i>Polemonium reptans</i>	Jacob's Ladder	Plugs	Spring Summer	WR, NM
Trays	H-S	<i>Solidago</i>	Goldenrod	Plugs	Spring Summer	WR, NM
Trays	H-T	<i>Trillium</i>	Trillium	Plugs	Spring Summer	WR
Trays	H-V	<i>Viola</i>	Viola	Plugs	Spring Summer	WR, BE, CBE, CBW
<b>SHRUBS</b>						
S-1F	<i>Amaranthus fruticosus</i>	Indigo Bush	5 gal	Spring Fall	WR, CBE, CBW	
S-1A	<i>Aronia arbutifolia</i>	Red Chokeberry	3 gal	Spring Fall	WR, BE	
S-1M	<i>Aronia melanocarpa</i>	Black Chokeberry	3 gal	Spring Fall	WR, BE	
S-1P	<i>Comptonia peruviana</i>	Sweetfern	1 gal	Spring Fall	ALL	
S-1D	<i>Dieris laticarpa</i>	Bush Honeysuckle	3 gal	Spring Fall	WR, NM, CBE, CBW	
S-1H	<i>Hamelis virginiana</i>	Witch Hazel	10 gal	Spring Fall	CBE, CBW	
S-1G	<i>Ilex glabra</i>	Inkberry	10 gal	Spring Fall	BE, CBW	
S-1V	<i>Ilex verticillata female</i>	Winterberry	7 gal	Spring Fall	WR, CBE, CBW, NM	
S-1VM	<i>Ilex verticillata male</i>	Winterberry	7 gal	Spring Fall	WR, CBE, CBW, NM	
S-1B	<i>Lindera benzoin</i>	Spicebush	10 gal	Spring Fall	WR	
S-1BP	<i>Myrica pensylvanica</i>	Bayberry	5 gal	Spring Fall	WR, BE, NM	
S-1RA	<i>Rhus aromatica</i>	Atomatic Sumac	3 gal	Spring Fall	BE, NM, HCS	
S-1RC	<i>Rosa carolina</i>	Carolina Rose	3 gal	Spring Fall	CBE, CBW, NM	
S-1RO	<i>Rubus odoratus</i>	Flowering Raspberry	3 gal	Spring Fall	CBE, NM, WR	
S-1X	<i>Xanthoxylum simplicissimum</i>	Yellowroot	Plugs	Spring Fall	WR, NM, CBE, CBW	
<b>TREES</b>						
T-1CO	<i>Abies concolor</i>	White Fir	5-7'	Spring Fall	CBW, NM	
T-1AR	<i>Acer rubrum</i>	Red Maple	5-7'	Spring Fall	WR, BE	
T-1AC	<i>Amelanchier canadensis</i>	Serviceberry	5-6'	Spring Fall	WR, CBE, CBW, BE	
T-1BC	<i>Betula lenta</i>	Black Birch	4-5'	Spring Fall	WR, CBW	
T-1CS	<i>Catalpa speciosa</i>	Catalpa	5-6'	Spring Fall	ALL	
T-1CC	<i>Carpinus caroliniana</i>	American Hornbeam	5-7'	Spring Fall	CBW, CBE	
T-1CT	<i>Chamaecyparis thyoides</i>	Atlantic White Cedar	5-7'	Spring Fall	WR	
T-1CF	<i>Comus florida</i>	Flowering Dogwood	5-7'	Spring Fall	BE, NM	
T-1CP	<i>Crataegus phaenopyrum</i>	Washington Hawthorn	5-7'	Spring Fall	BE, CBW	
T-1ID	<i>Ilex opaca</i>	American Holly	5-7'	Spring Fall	BE, NM	
T-1JV	<i>Juniperus virginiana</i>	Eastern Red Cedar	5'	Spring Fall	BE, NM	
T-1NS	<i>Nyssa sylvatica</i>	Blackgum	6-7'	Spring Fall	BE, NM	
T-1MM	<i>Magnolia macrophyll</i>	Magnolia	5-7'	Spring Fall	WR	
T-1PR	<i>Pinus rubens</i>	Red Spruce	5-9'	Spring Fall	BE, CBW	
T-1PV	<i>Pinus virginiana</i>	Scrub Pine	5-9'	Spring Fall	BE, CBW	
T-1PS	<i>Pinus strobus</i>	White Pine	5-9'	Spring Fall	BE, CBW	
T-1PO	<i>Plantanus occidentalis</i>	American Sycamore	7'	Spring Fall	WR	
T-1PA	<i>Prunus serotina</i>	Wild Black Cherry	3-4'	Spring Fall	NM, WR, CBE, CBW	
T-1PB	<i>Prunus pennsylvanica</i>	Pin Cherry	3-4'	Spring Fall	NM, WR, CBE, CBW	
T-1SD	<i>Salix discolor</i>	Pussy Willow	5'	Spring Fall	WR, CBE	
T-1QC	<i>Quercus coccinea</i>	Scarlet Oak	8-10'	Spring Fall	NM, BE	
T-1QP	<i>Quercus palustris</i>	Pin Oak	8-10'	Spring Fall	NM, BE	
T-1VQ	<i>Viburnum prunifolium</i>	Blackhaw	6-7'	Spring Fall	NM	
<b>VINES</b>						
V-1PQ	<i>Parthenocissus quinquefolia</i>	Virginia Creeper	3 gal	Spring Fall	BE	

SEED MIXES	ERNNM-105	Native Meadow	Northeastern Native Mix	Seed/Plug April-October	NM
ERNNM-120	Native Wetland Restoration	Northeastern Grass and Forb	Seed/Plug April-October	WR	
ERNNM-126	Native Meadow	Retention Basin Low Maint Mix	Seed/Plug April-October	NM	
ERNNM-140	Native Meadow	Partially Shaded Native Mix	Seed/Plug April-October	CBE, CBW	
ERNSM-155	Native Meadow	Deer Resist Native Meadow Mix	Seed/Plug April-October	NM	
ERNNM-180-1	Native Meadow	Rain Garden Mix	Seed/Plug April-October	NM	
ERNNM-181-1	Native Meadow	Native Steep Slope with Oats	Seed/Plug April-October	CBE, CBW	
ERNNM-181-2	Native Meadow	Native Steep Slope with Rye	Seed/Plug April-October	WR	
ERNNM-183	Native Meadow	Native Detention Area Mix	Seed/Plug April-October	NM	
ERNNM	Custom Mix	Salt-tolerant, Shady Mix	Seed/Plug April-October	BE	
ERNNM	Custom Mix	Native Low Meadow	Seed/Plug April-October	HCS	
<b>AREA LEGEND</b>					
BE	Building Envelope				
CE	Conservation				
CBW	Conservation Buffer WEST of GT(Greenway)				
HCS	Half Circle Seating Area				
NM	Native Meadow				
WR	Wetland Restoration				

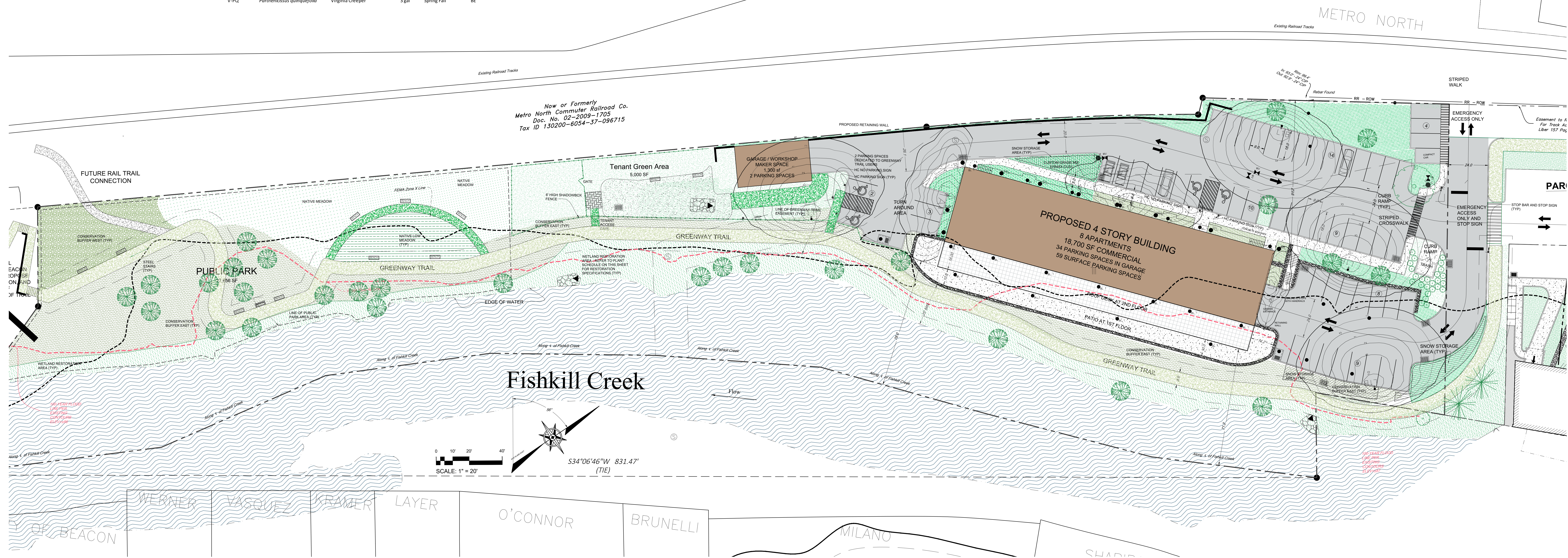


**TREE PROTECTION**

- Tree Protection shall be built around all trees designated by Owner. See LEGEND. This task shall be performed and/or supervised by an arborist associated with Landscape Designer.
- Tree Protection shall be honored by General Contractor, and all Contractors, and remain in place for life of project development.
- A penalty for tree damage and non-compliance with Tree Protection shall be discussed at first Site Meeting and written into GC contract and each penalty shall be billed to General Contractor.
- Tree Protection is defined as sturdy stakes every 4' connected by strong fencing (not orange nylon fencing) built outside each CRZ(Critical Root Zone), with KEEP OUT:PROTECTED TREE signs.
- CRZ is defined as extending from the trunk to just outside the Drip Line, or a distance of 1.5' per inch of DSH(Diameter at Standard Height), whichever is greater.
- Under Penalty, the following activities are not allowed within the CRZ:
  - Stockpiling of construction materials or demo debris
  - Vehicle or equipment parking
  - Trenching for utility installation or repair(unless pre-approved)
  - Changing soil grade by cutting or filling
  - Damaging of roots by grading, tearing or grubbing
  - Compaction of soil by equipment, vehicles, material storage and/or foot traffic
  - Contaminating soil from washing out equipment(especially concrete) and vehicle maintenance
  - Attaching anything to trees with nails, screws and/or spikes
  - Wound or break tree trunks or branches through contact with vehicles and heavy equipment
  - Wound trunks by string weed trimmers and lawn mowers
  - Cause injury by fire or excessive heat
- Most tree roots over 4" are likely to be structural roots. Cutting these roots could cause future catastrophic failure.
- Make all needed cuts to tree roots cleanly with sharp tools to encourage good wound closure; never tear with a backhoe.
- After project completion, maintain an "invisible" passive TPZ (Tree Protection Zone) around all important trees though-out their lives by maintaining a mulched, grass-free area around the tree so weed-trimmers and mowers are always kept at bay and foot traffic is kept off the inner CRZ.

NOTE: FOR DETAILS OF SEED MIXES, REFER TO SEPARATE DOCUMENT ENTITLED "23-28 CREEK DRIVE SEED MIX COMPOSITION BREAKDOWN PER AREA"

NOTE: REFER TO SHEET 2 FOR LIGHTING AND LANDSCAPE DETAILS



**Landscape Plan**  
Scale: 1" = 20'

**Site Plan Application**  
Sheet 4 of 12 - Landscape & Lighting Plan

Owner:  
**Weber Projects III, LLC**  
11 Creek Drive  
Beacon, New York 12508

Architect:  
**Archey Siegel, Architect**  
84 Mason Circle  
Beacon, New York 12508

Site / Civil Engineer:  
**Hudson Land Design**  
174 Main Street  
Beacon, New York 12508

Surveyor:  
**TEC Land Surveying, P.C.**  
15C Tioronda Avenue  
Beacon, New York 12508

Landscape Designer:  
**Landscape Restorations**  
P.O. Box 286  
Beacon, New York 12508

**23 - 28 Creek Drive**  
Beacon, New York  
Scale: As Noted  
October 23, 2018