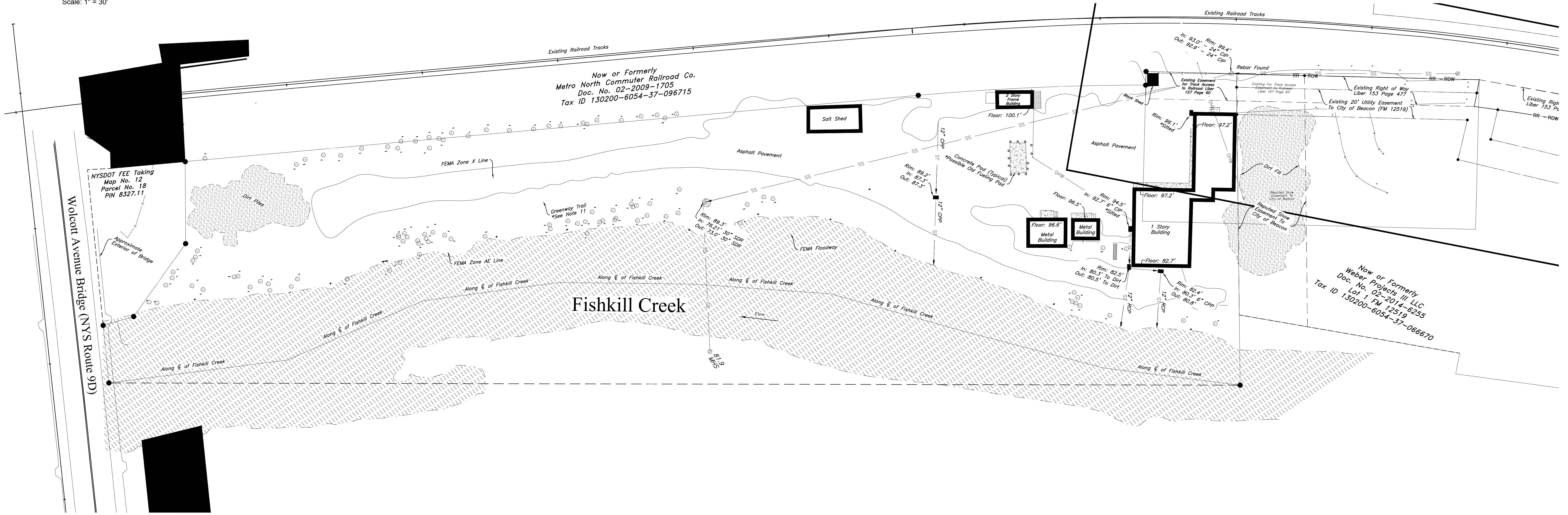


**Demolition Plan**  
Scale: 1" = 30'



**Existing Conditions Plan**  
Scale: 1" = 30'

TOPOGRAPHIC INFORMATION AND EXISTING CONDITIONS INFORMATION BASED ON THE SURVEY BY TEC LAND SURVEYING, P.C. DATED JULY 12, 2018



**POLE MOUNTED LIGHT (L1A)**  
SELUX LIGHTING "BETA PENDANT" POLE MOUNTED 100W FIXTURE. MODEL #BPC-LR2-1-H100-BK-120-HS-PC WITH LOW GLARE CUTOFF SHIELD. COLOR: BLACK. PHOTOCELL CONTROL. OR APPROVED EQUAL. MOUNTING HEIGHT ON ASS SERIES BLACK ALUMINUM POLE = 10 FEET

**POLE MOUNTED LIGHT (L1B)**  
SELUX LIGHTING "BETA PENDANT" POLE MOUNTED 150W FIXTURE. MODEL #BPC-LR2-1-H150-BK-120-HS-PC WITH LOW GLARE CUTOFF SHIELD. COLOR: BLACK. PHOTOCELL CONTROL. OR APPROVED EQUAL. MOUNTING HEIGHT ON ASS SERIES BLACK ALUMINUM POLE = 12 FEET

NOTE: AS AN ALTERNATE, THE OWNER MAY INSTALL EQUIVALENT WATTAGE LED FIXTURES IN PLACE OF THE INCANDESCENT FIXTURES SHOWN. LED LIGHTING WILL MEET THE SAME SPECIFICATIONS FOR LOW GLARE CUTOFF CONTROLS, EITHER BY SHIELDING OR INTERNAL CONTROLS.

NOTE: ALL EXTERIOR LIGHTING ON THE SITE SHALL BE DIRECTED AND/OR SHIELDED SO AS NOT TO CAUSE ANY OBJECTIONABLE GLARE OBSERVABLE FROM NEIGHBORING STREETS AND PROPERTIES. THE SOURCE (BULBS) OF SUCH LIGHTING SHALL NOT BE VISIBLE FROM SAID NEIGHBORING STREETS AND PROPERTIES. PHOTOMETRIC DIAGRAMS ARE SHOWN WITH SHIELDED CONDITIONS.



**WALL MOUNTED LIGHT (L2)**  
SELUX LIGHTING "BETA PENDANT" WALL MOUNTED FIXTURE. MODEL #BPC-LR2-1-H100-BK-120-HS-PC WITH LOW GLARE CUTOFF SHIELD. COLOR: BLACK. PHOTOCELL CONTROL. OR APPROVED EQUAL. MOUNTING HEIGHT = 12 FEET



**WALL MOUNTED HOUSE LIGHT (BL1)**  
BARNLIGHT ELECTRIC WALL MOUNTED FIXTURE. MODEL #WESCO GOOSENECK. 100W. COLOR: DARK GREEN METAL. SHADE. OR APPROVED EQUAL. MOUNTING HEIGHT = 7 FEET

NOTE THAT THE MANUFACTURER DOES NOT PROVIDE FOOTCANDLE DIAGRAMS FOR THIS FIXTURE. THE FIXTURE IS SHADED AND DOES NOT EMIT GLARE.

REVISIONS:			
NO.	DATE	DESCRIPTION	BY
1	12/25/18	NO CHANGE	AJS
2	02/22/19	NO CHANGE	AJS
3	03/26/19	REVISED PER PLANNING BOARD COMMENTS	AJS
4	04/30/19	REVISED PER PLANNING BOARD COMMENTS	AJS
5	05/28/19	REVISED PER PLANNING BOARD COMMENTS	AJS