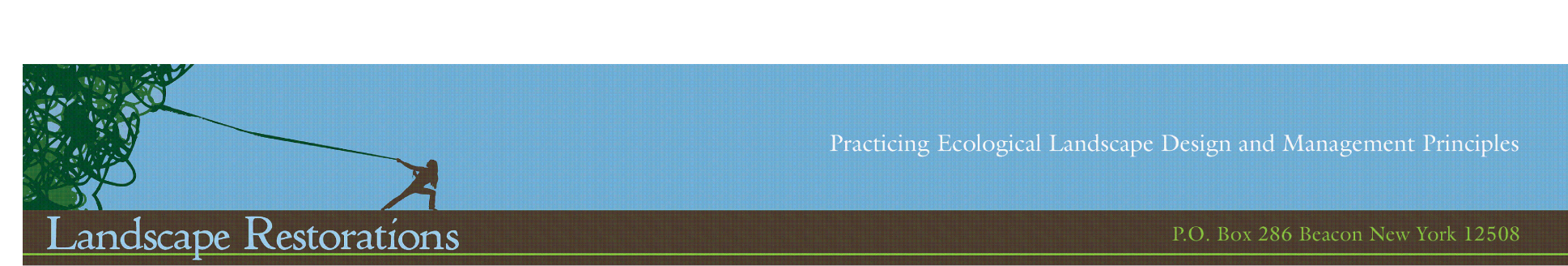
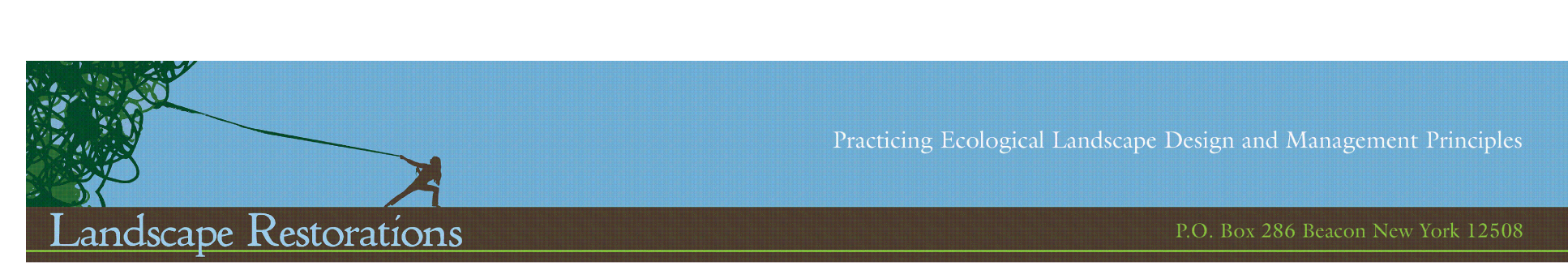


REVISIONS:				
NO.	DATE	DESCRIPTION	BY	
1	12/25/18	REVISED PER PLANNING BOARD COMMENTS	AJS	
2	02/22/19	REVISED PER PLANNING BOARD COMMENTS	AJS	
3	03/26/19	REVISED PER PLANNING BOARD COMMENTS	AJS	
4	04/30/19	REVISED PER PLANNING BOARD COMMENTS	AJS	
5	05/28/19	REVISED PER PLANNING BOARD COMMENTS	AJS	

PLANT SCHEDULE		PHASE ONE		23-28 Creek Drive		BEACON	
QUANTITY	KEY	BOTANIC NAME	COMMON NAME	SIZE	Planting Time	AREA	
Created and compiled by D. Adams on December 15, 2018							
FERNS							
Trays	F-DP	<i>Dennstaedtia punctilobula</i>	Hay-scented fern	Plugs	Spring Fall	NM,CBE,CBW	
Trays	F-DI	<i>Dryopteris intermedia</i>	Evergreen Wood Fern	Plugs	Spring Fall	CBE	
Trays	F-CC	<i>Cheilanthes cinnamomea</i>	Cinnamon Fern	Quarts	Spring Fall	WR,CBE	
Trays	F-PA	<i>Polystichum acrostichoides</i>	Christmas Fern	Plugs	Spring Fall	BE,NM,CBW,CBE	
GRASSES							
Trays	G-AG	<i>Andropogon gerardii</i>	Big Bluestem	Plugs	Spring Summer	BE,NM,CBW	
Trays	ECO-LAWN	<i>Buchloe dactyloides 'Texaco'</i>	Eco Lawn	Seed	Spring Summer	BE	
Trays	G-CA	<i>Carex appalachica</i>	Appalachian Sedge	Plugs	Spring Summer	BE,CBW,CBE,WR	
Trays	G-CB	<i>Carex bromoides</i>	Bromlike Sedge	Plugs	Spring Summer	BE,CBE,CBW,WR	
Trays	G-CP	<i>Carex pensylvanica</i>	Sedge	Plugs	Spring Summer	BE,CBE,CBW,WR	
Trays	G-CL	<i>Chasmodon latifolia</i>	Northern Sea Oats	Plugs	Spring Summer	BE,CBE,CBW,HCS	
Trays	G-PV	<i>Panicum virgatum</i>	Indian Switchgrass	Plugs	Spring Summer	BE,NM,HCS	
Trays	G-SS	<i>Scirpochyrium scoparium</i>	Little Bluestem	Plugs	Spring Summer	BE,NM,HCS	
HERBACEOUS							
Trays	H-AT	<i>Asclepias incarnata</i>	Swamp Milkweed	Plugs	Spring Summer	WR	
Trays	H-AI	<i>Asclepias tuberosa</i>	Butterfly Milkweed	Plugs	Spring Summer	NM,CBE,CBW	
Trays	H-AT	<i>Amsinon tabernaemontana</i>	Common Bluestar	Plugs	Spring Summer	WR, NM	
Trays	H-A	Aster	Aster (NY and Woodland)	Plugs	Spring Summer	WR, NM	
Trays	H-IC	<i>Iris cristata</i>	Crested Iris	Plugs	Spring Summer	WR	
Trays	H-PR	<i>Polemonium reptans</i>	Jacob's Ladder	Plugs	Spring Summer	WR, NM	
Trays	H-S	<i>Solidago</i>	Goldenrod	Plugs	Spring Summer	WR, NM	
Trays	H-T	<i>Trillium</i>	Trillium	Plugs	Spring Summer	WR	
Trays	H-V	<i>Viola</i>	Viola	Plugs	Spring Summer	WR, BE, CBE, CBW	
SHRUBS							
S-AF	<i>Amaranthus fruticosus</i>	Indigo Bush	5 gal	Spring Fall	WR, CBE, CBW		
S-AA	<i>Aronia arbutifolia</i>	Red Chokeberry	3 gal	Spring Fall	WR, BE		
S-AM	<i>Aronia melanocarpa</i>	Black Chokeberry	3 gal	Spring Fall	WR, BE		
S-CP	<i>Comptonia peruviana</i>	Sweetfern	1 gal	Spring Fall	ALL		
S-DL	<i>Diervilla lonicera</i>	Bush Honeysuckle	3 gal	Spring Fall	WR, NM, CBE, CBW		
S-HI	<i>Hamelis virginiana</i>	Witch Hazel	10 gal	Spring Fall	CBE, CBW		
S-IG	<i>Ilex glabra</i>	Inkberry	10 gal	Spring Fall	BE, CBW		
S-IV	<i>Ilex verticillata female</i>	Winterberry	7 gal	Spring Fall	WR, CBE, CBW, NM		
S-IVM	<i>Ilex verticillata male</i>	Winterberry	7 gal	Spring Fall	WR, CBE, CBW, NM		
S-LB	<i>Lindera benzoin</i>	Spicebush	10 gal	Spring Fall	WR		
S-MP	<i>Myrica pensylvanica</i>	Bayberry	5 gal	Spring Fall	WR, BE, NM		
S-RA	<i>Rhus aromatica</i>	Atromelic Sumac	3 gal	Spring Fall	BE, NM, HCS		
S-RC	<i>Rosa carolina</i>	Carolina Rose	3 gal	Spring Fall	CBE, CBW, NM		
S-RO	<i>Rubus odoratus</i>	Flowering Raspberry	3 gal	Spring Fall	CBE, NM, WR		
S-XS	<i>Xanthoxylum simplicissimum</i>	Yellowwood	Plugs	Spring Fall	WR, NM, CBE, CBW		
TREES							
T-ACO	<i>Abies concolor</i>	White Fir	5-7'	Spring Fall	CBW, NM		
T-AR	<i>Acer rubrum</i>	Red Maple	5-7'	Spring Fall	WR, BE		
T-AC	<i>Amelanchier canadensis</i>	Serviceberry	5-6'	Spring Fall	WR, CBE, CBW, BE		
T-BL	<i>Betula lenta</i>	Black Birch	4-5'	Spring Fall	WR, CBW		
T-CS	<i>Catalpa speciosa</i>	Catalpa	5-6'	Spring Fall	ALL		
T-CC	<i>Carpinus caroliniana</i>	American Hornbeam	5-7'	Spring Fall	CBW, CBE		
T-CT	<i>Chamaecyparis thyoides</i>	Atlantic White Cedar	5-7'	Spring Fall	WR		
T-CF	<i>Comus florida</i>	Flowering Dogwood	5-7'	Spring Fall	BE, NM		
T-CP	<i>Crotonus phaenopyrum</i>	Washington Hawthorn	5-7'	Spring Fall	BE, CBW		
T-ID	<i>Ilex opaca</i>	American Holly	5-7'	Spring Fall	BE, NM		
T-JV	<i>Juniperus virginiana</i>	Eastern Red Cedar	5'	Spring Fall	BE, NM		
T-NS	<i>Nyssa sylvatica</i>	Blackgum	6-7'	Spring Fall	BE, NM		
T-MM	<i>Magnolia Macrophyll</i>	Magnolia	5-7'	Spring Fall	WR		
T-PR	<i>Pinus rubens</i>	Red Spruce	5-9'	Spring Fall	BE, CBW		
T-VP	<i>Pinus virginiana</i>	Scrub Pine	5-9'	Spring Fall	BE, CBW		
T-PS	<i>Pinus strobus</i>	White Pine	5-9'	Spring Fall	BE, CBW		
T-PO	<i>Plantanus occidentalis</i>	American Sycamore	7'	Spring Fall	WR		
T-PA	<i>Prunus serotina</i>	Wild Black Cherry	3-4'	Spring Fall	NM, WR, CBE, CBW		
T-PP	<i>Prunus pennsylvanica</i>	Pin Cherry	3-4'	Spring Fall	NM, WR, CBE, CBW		
T-SD	<i>Salix discolor</i>	Pussy Willow	5'	Spring Fall	WR, CBE		
T-QC	<i>Quercus coccinea</i>	Scarlet Oak	8-10'	Spring Fall	NM, BE		
T-QP	<i>Quercus palustris</i>	Pin Oak	8-10'	Spring Fall	NM, BE		
T-VQ	<i>Viburnum prunifolium</i>	Blackhaw	6-7'	Spring Fall	NM		
V-PQ	<i>Parthenocissus quinquefolia</i>	Virginia Creeper	3 gal	Spring Fall	BE		

SEED MIXES		DESCRIPTION	
lbs	ERNMX-105	Native Meadow	Northeastern Native Mix
lbs	ERNMX-120	Native Wetland Restoration	Northeastern Grass and Forb
lbs	ERNMX-126	Native Meadow	Retention Basin Low Maint Mix
lbs	ERNMX-140	Native Meadow	Partially Shaded Native Mix
lbs	ERNMX-155	Native Meadow	Deer Resist Native Meadow Mix
lbs	ERNMX-180-1	Native Meadow	Rain Garden Mix
lbs	ERNMX-181-1	Native Meadow	Native Steep Slope with Oats
lbs	ERNMX-181-2	Native Meadow	Native Steep Slope with Rye
lbs	ERNMX-183	Native Meadow	Native Detention Area Mix
lbs	ERNMX	Custom Mix	Salt-tolerant, Shady Mix
lbs	ERNMX	Custom Mix	Native Low Meadow

AREA LEGEND	
BE	Building Envelope
CE	Conservation
CBW	Conservation Buffer WEST of GT (Greenway)
HCS	Half Circle Seating Area
NM	Native Meadow
WR	Wetland Restoration

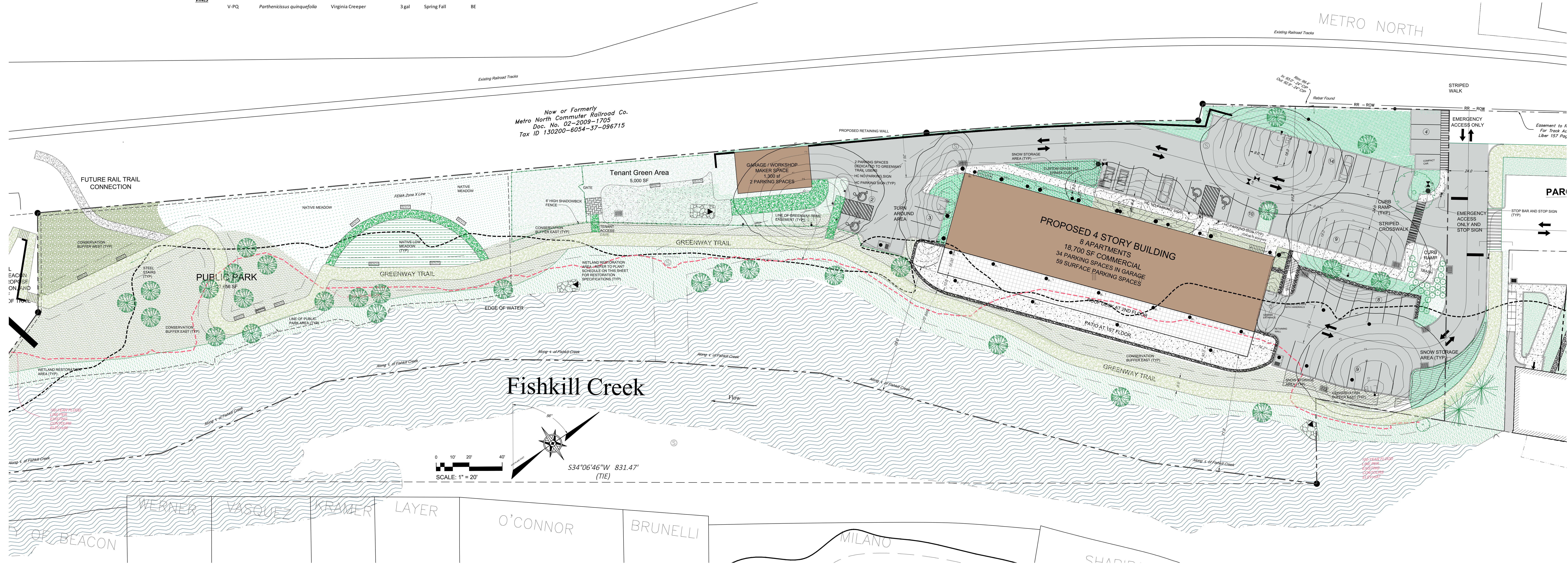


TREE PROTECTION

- Tree Protection shall be built around all trees designated by Owner. See LEGEND. This task shall be performed and/or supervised by an arborist associated with Landscape Designer.
- Tree Protection shall be honored by General Contractor, and all Contractors, and remain in place for life of project development.
- A penalty for tree damage and non-compliance with Tree Protection shall be discussed at first Site Meeting and written into GC contract and each penalty shall be billed to General Contractor.
- Tree Protection is defined as sturdy stakes every 4' connected by strong fencing (not orange nylon fencing) built outside each CRZ (Critical Root Zone), with KEEP OUT: PROTECTED TREE signs.
- CRZ is defined as extending from the trunk to just outside the Drip Line, or a distance of 1.5' per inch of DSH (Diameter at Standard Height), whichever is greater.
- Under Penalty, the following activities are not allowed within the CRZ:
 - Stockpiling of construction materials or demo debris
 - Vehicle or equipment parking
 - Trenching for utility installation or repair (unless pre-approved)
 - Changing soil grade by cutting or filling
 - Damaging of roots by grading, tearing or grubbing
 - Compaction of soil by equipment, vehicles, material storage and/or foot traffic
 - Contaminating soil from washing out equipment (especially concrete) and vehicle maintenance
 - Attaching anything to trees with nails, screws and/or spikes
 - Wound or break tree trunks or branches through contact with vehicles and heavy equipment
 - Wound trunks by string weed trimmers and lawn mowers
 - Cause injury by fire or excessive heat
- Most tree roots over 4" are likely to be structural roots. Cutting these roots could cause future catastrophic failure.
- Make all needed cuts to tree roots cleanly with sharp tools to encourage good wound closure; never tear with a backhoe.
- After project completion, maintain an "invisible" passive TPZ (Tree Protection Zone) around all important trees though-out their lives by maintaining a mulched, grass-free area around the tree so weed-trimmers and mowers are always kept at bay and foot traffic is kept off the inner CRZ.

NOTE: FOR DETAILS OF SEED MIXES, REFER TO SEPARATE DOCUMENT ENTITLED "23-28 CREEK DRIVE SEED MIX COMPOSITION BREAKDOWN PER AREA"

NOTE: REFER TO SHEET 2 FOR LIGHTING AND LANDSCAPE DETAILS



Landscape Plan
Scale: 1" = 20'

Site Plan Application
Sheet 4 of 12 - Landscape & Lighting Plan

Owner:
Weber Projects III, LLC
11 Creek Drive
Beacon, New York 12508

Architect:
Aryeh Siegel, Architect
84 Mason Circle
Beacon, New York 12508

Site / Civil Engineer:
Hudson Land Design
174 Main Street
Beacon, New York 12508

Surveyor:
TEC Land Surveying, P.C.
15C Tioronda Avenue
Beacon, New York 12508

Landscape Designer:
Landscape Restorations
P.O. Box 286
Beacon, New York 12508

23 - 28 Creek Drive
Beacon, New York
Scale: As Noted
October 23, 2018