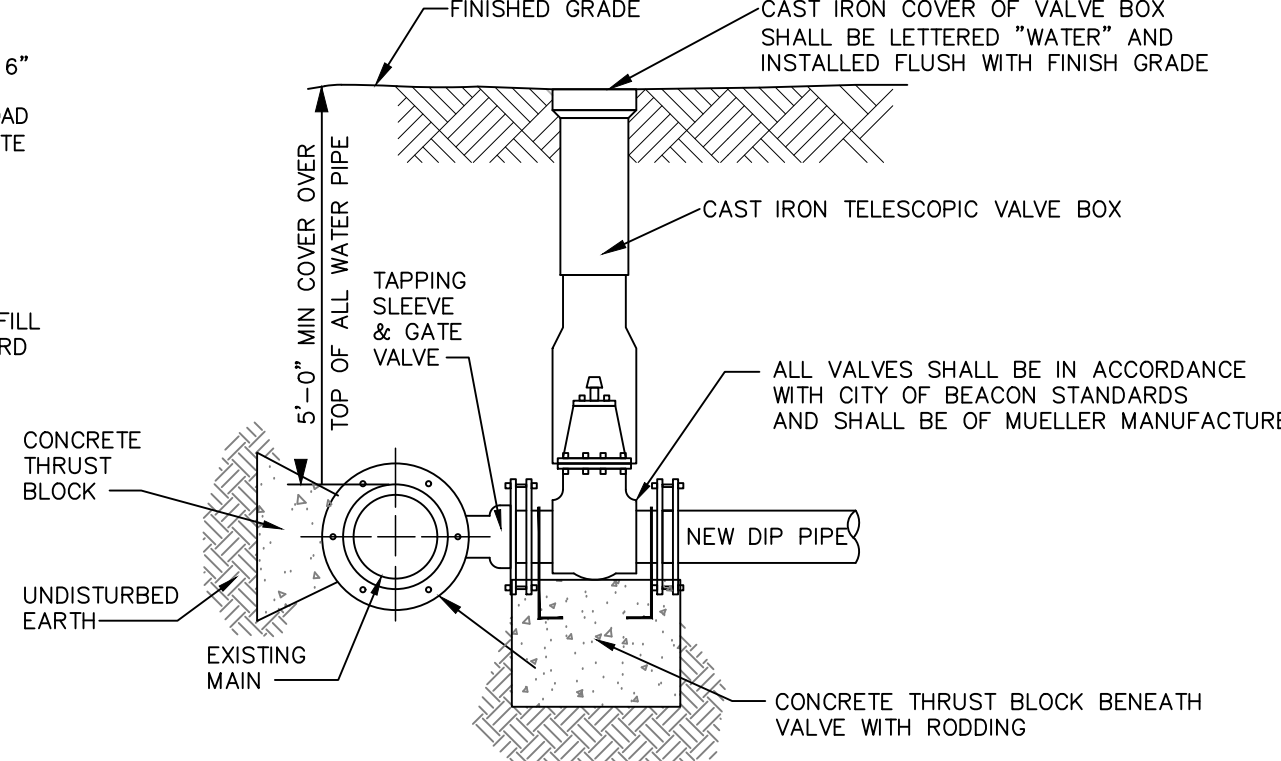


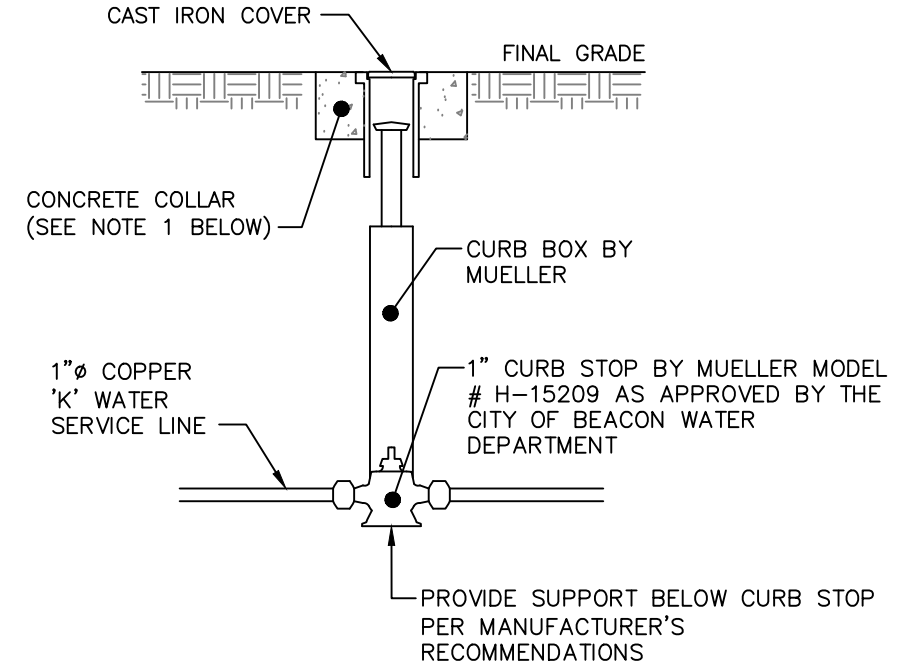
- NOTES:**
- EXCAVATION AND TRENCHING SHALL MEET ALL OSHA REQUIREMENTS.
  - SUITABLE RUN OF TRENCH SHALL NOT INCLUDE FROZEN MATERIALS, DEBRIS, ORGANIC MATERIALS, ENLARGED PARTICLES, LARGE STONES OR OTHER UNSUITABLE MATERIALS. IF THE RUN OF TRENCH MATERIAL IS FOUND TO BE UNSUITABLE, A SUITABLE BACKFILL MATERIAL SHALL BE IMPORTED AND USED.
  - IN AREAS WHERE 5' COVER REQUIREMENT CANNOT BE MET, THE CONTRACTOR SHALL PROVIDE PIPE INSULATION TO PREVENT FREEZING.

**WATER SERVICE LINE TRENCH DETAIL**  
NOT TO SCALE



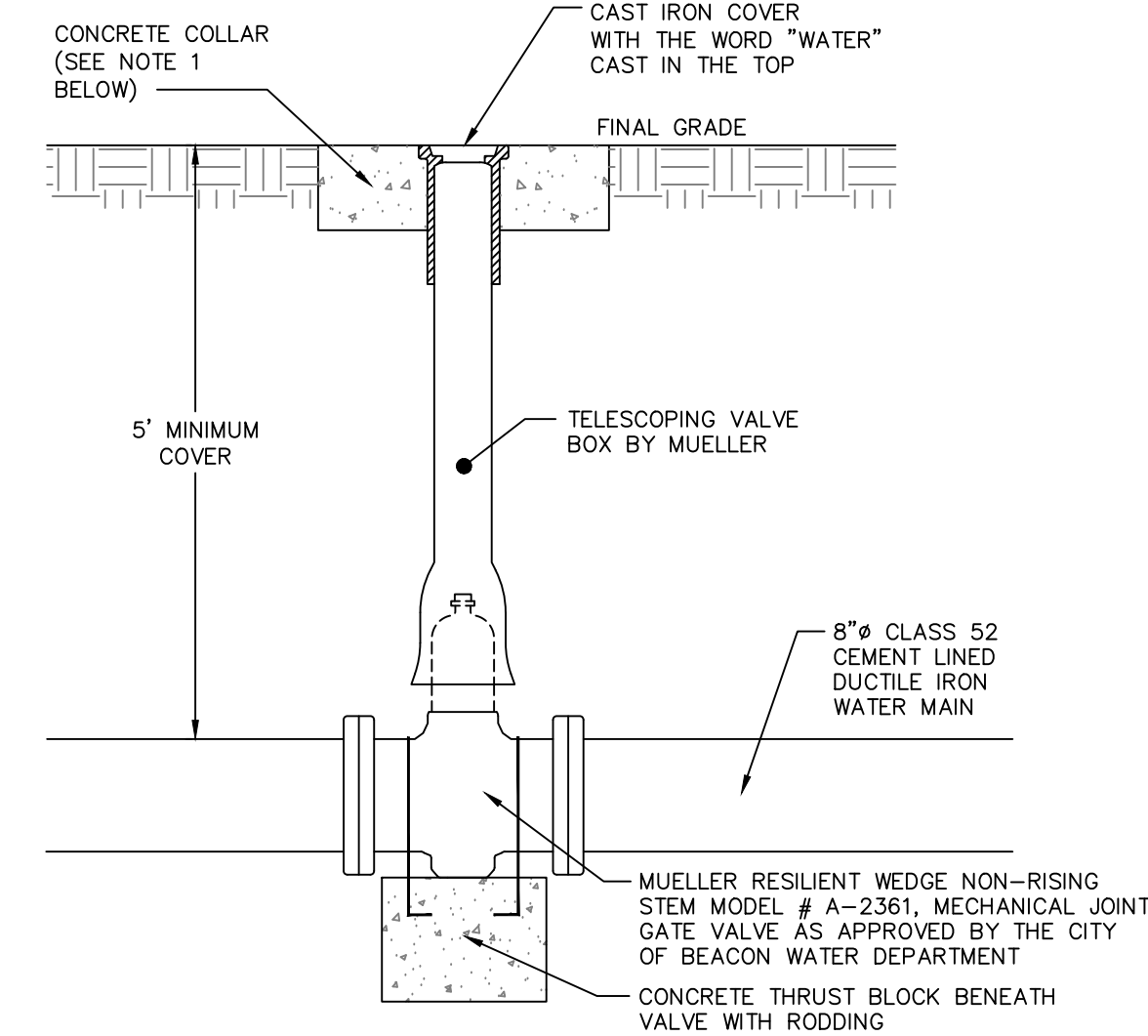
- NOTES:**
- ALL VALVES SHALL OPEN BY TURNING LEFT (COUNTERCLOCKWISE) AND HAVE A 2-INCH SQUARE-OPERATING NUT PAINTED RED.
  - ALL VALVES SHALL BE M.J. RESILIENT WEDGE TYPE WITH "O" RING PACKING, DESIGNED FOR A WORKING PRESSURE OF 150 PSI AND BE IN FULL CONFORMANCE WITH AWWA C500.
  - TAPPING SLEEVE AND GATE VALVE SHOWN ARE MUELLER H-615, AND T-2631 RESPECTIVELY.

**TAPPING SLEEVE DETAIL**  
NOT TO SCALE



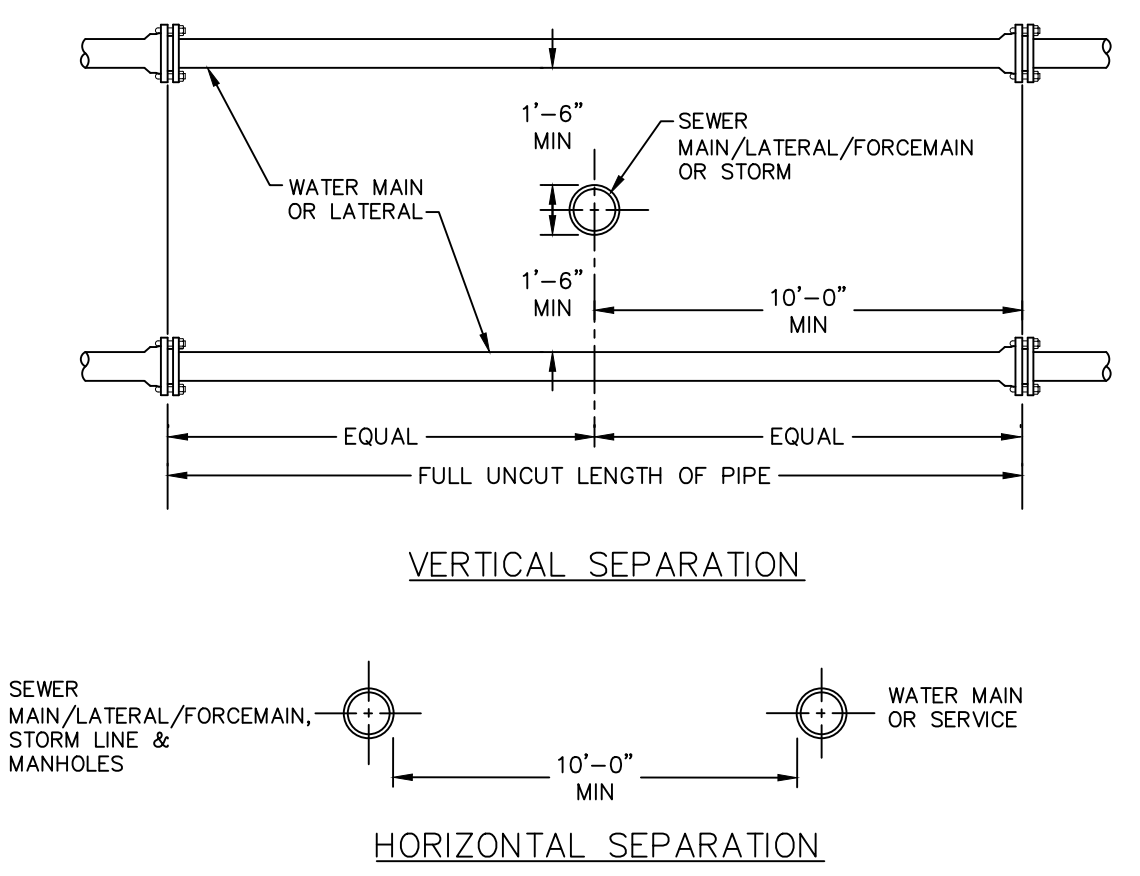
- NOTES:**
- CONCRETE COLLAR TO BE PROVIDED IN AREAS THAT ARE NOT PAVED. THE COLLAR SHALL BE 6" FROM THE COVER AND SHALL EXTEND 6" BELOW FINAL GRADE.
  - CURB STOP TO BE COMPRESSION TYPE BY MUELLER.
  - AREA AROUND CURB BOX TO BE BACKFILLED WITH GRAVELLY MATERIAL.

**WATER SHUT-OFF VALVE DETAIL**  
NOT TO SCALE



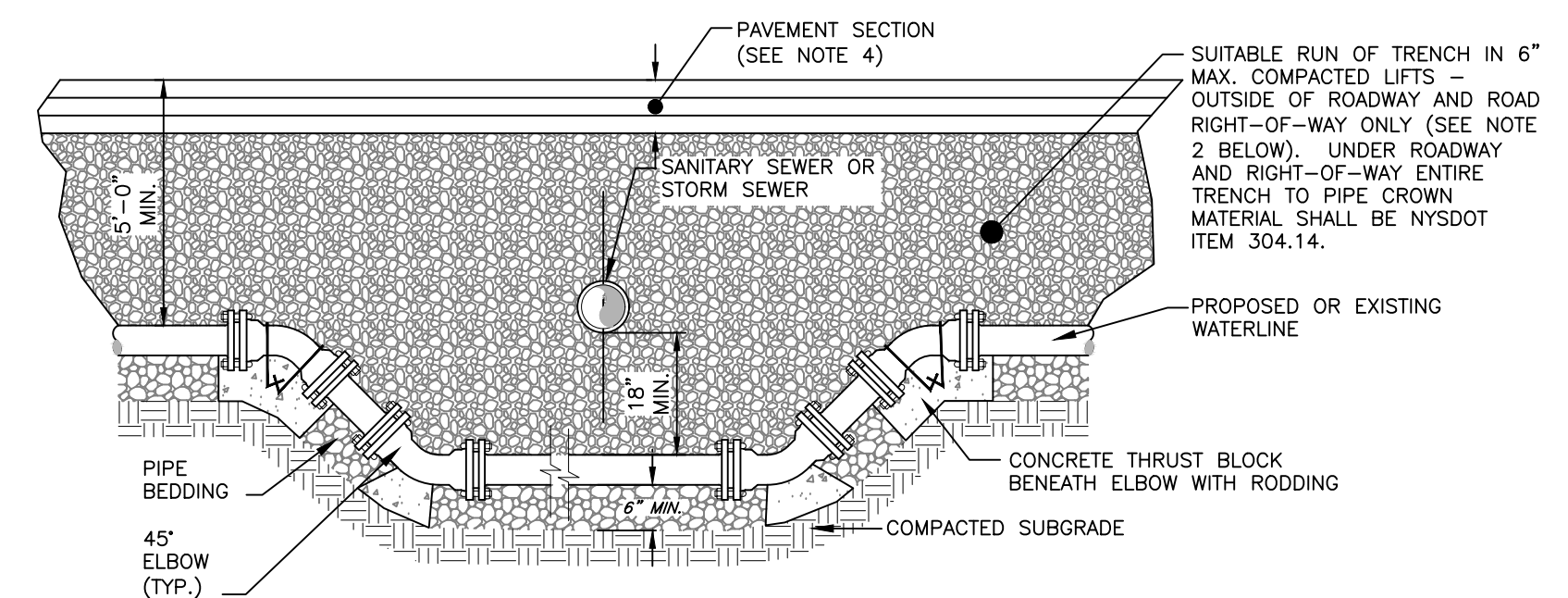
- NOTES:**
- CONCRETE COLLAR TO BE PROVIDED IN AREAS THAT ARE NOT PAVED. THE COLLAR SHALL BE 6" FROM THE COVER AND SHALL EXTEND 6" BELOW FINAL GRADE.

**GATE VALVE DETAIL**  
NOT TO SCALE



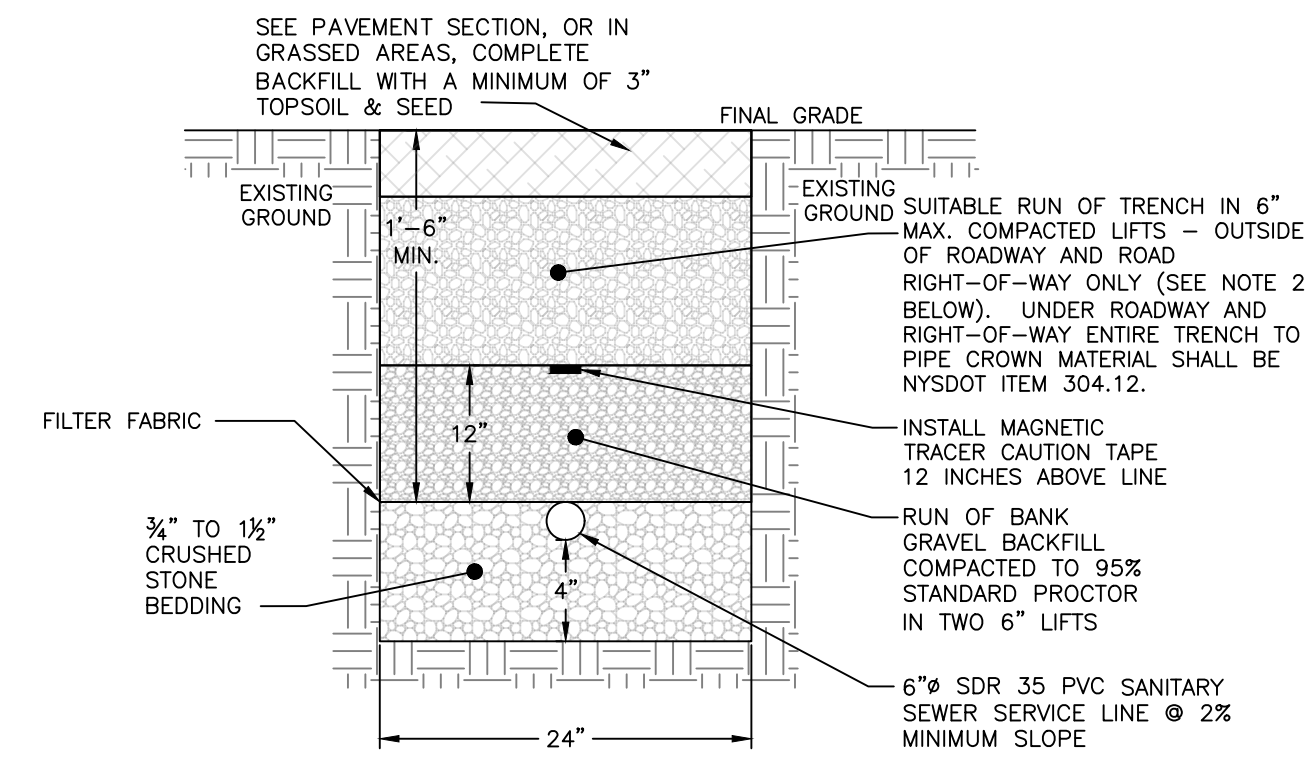
- NOTE:**
- NO DEVIATION IN THE SEPARATION REQUIREMENTS WILL BE PERMITTED WITHOUT THE EXPRESS APPROVAL OF THE DUTCHESS COUNTY DEPARTMENT OF HEALTH AND THE CITY OF BEACON. CONCRETE ENCASUREMENT OF WATERLINE OR OFFSETTING OF WATERLINE SHALL BE REQUIRED WHERE SEPARATION DISTANCES CANNOT BE MAINTAINED.

**WATER LINE SEPARATION DETAIL**  
NOT TO SCALE



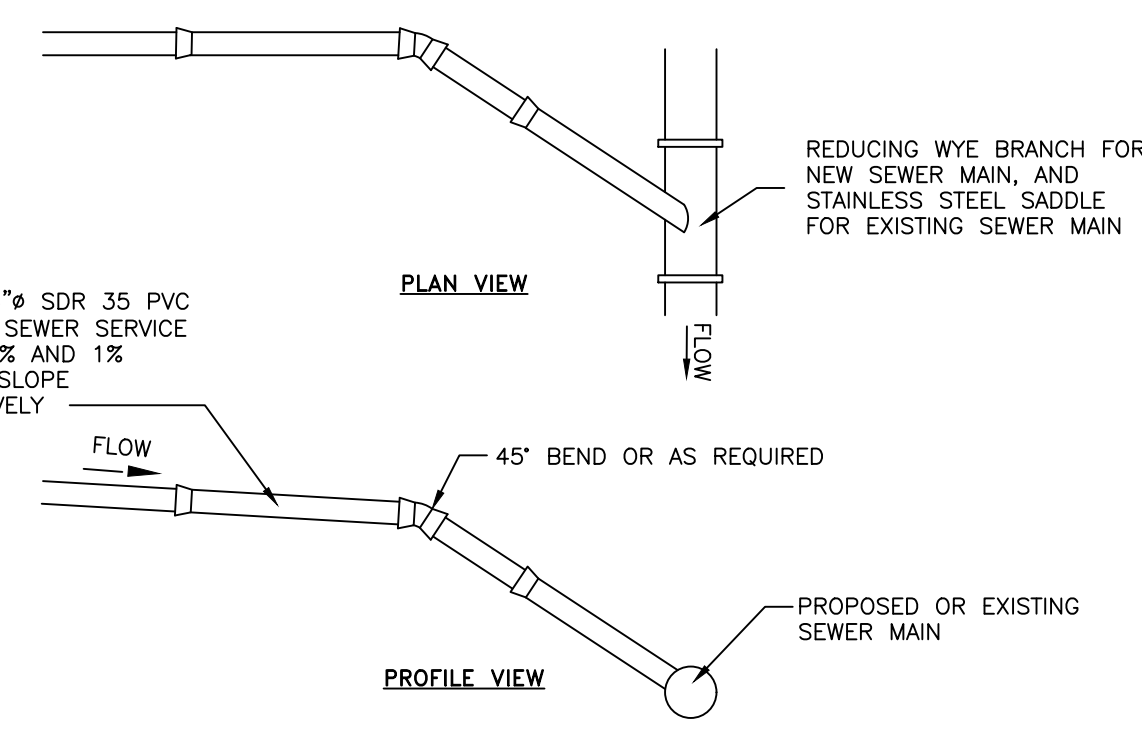
- NOTES:**
- WHEN THE ELEVATION OF THE SANITARY OR STORM SEWER CAN NOT BE VARIED TO MEET THE ABOVE REQUIREMENTS, THE WATER SERVICE LINE OR MAIN SHALL BE RELOCATED TO PROVIDE THIS REQUIRED SEPARATION OR RECONSTRUCTED WITH MECHANICAL JOINT PIPE FOR A DISTANCE OF TEN (10) FEET ON EACH SIDE OF THE SEWER. ONE FULL LENGTH OF WATERMAIN SHALL BE CENTERED OVER THE SEWER SO THAT BOTH JOINTS WILL BE AS FAR AWAY FROM THE SEWER AS POSSIBLE.
  - SUITABLE RUN OF TRENCH SHALL NOT INCLUDE FROZEN MATERIALS, DEBRIS, ORGANIC MATERIALS, ENLARGED PARTICLES, LARGE STONES OR OTHER UNSUITABLE MATERIALS. IF THE RUN OF TRENCH MATERIAL IS FOUND TO BE UNSUITABLE, A SUITABLE BACKFILL MATERIAL SHALL BE IMPORTED AND USED.
  - THE RELOCATED WATER MAIN/SERVICE LINE SHALL BE DISINFECTED IN ACCORDANCE WITH AWWA, NYSDOH AND DCDOH STANDARDS.
  - PAVEMENT RESTORATION SHALL BE IN ACCORDANCE WITH THE PAVEMENT RESTORATION DETAIL.
  - ALL REPLACED WATERMAIN SHALL MATCH THE EXISTING DIAMETER OF THE EXISTING MAIN, AND SHALL BE CLASS 52 DUCTILE IRON.

**WATER LINE OFFSET DETAIL**  
NOT TO SCALE



- NOTES:**
- EXCAVATION AND TRENCHING SHALL MEET ALL OSHA REQUIREMENTS.
  - SUITABLE RUN OF TRENCH SHALL NOT INCLUDE FROZEN MATERIALS, DEBRIS, ORGANIC MATERIALS, LARGE STONES OR OTHER UNSUITABLE MATERIALS. IF THE RUN OF TRENCH MATERIAL IS FOUND TO BE UNSUITABLE, A SUITABLE BACKFILL MATERIAL SHALL BE IMPORTED AND USED.

**SANITARY SEWER SERVICE LINE TRENCH DETAIL**  
NOT TO SCALE



- NOTES:**
- EXCAVATION AND TRENCHING SHALL MEET ALL OSHA REQUIREMENTS.
  - SUITABLE RUN OF TRENCH SHALL NOT INCLUDE FROZEN MATERIALS, DEBRIS, ORGANIC MATERIALS, LARGE STONES OR OTHER UNSUITABLE MATERIALS. IF THE RUN OF TRENCH MATERIAL IS FOUND TO BE UNSUITABLE, A SUITABLE BACKFILL MATERIAL SHALL BE IMPORTED AND USED.

**SANITARY SEWER SERVICE CONNECTION DETAIL**  
NOT TO SCALE

APPROVED BY RESOLUTION OF THE PLANNING BOARD OF THE CITY OF BEACON, NEW YORK, ON THE \_\_\_\_\_ DAY OF \_\_\_\_\_, 20\_\_\_\_, SUBJECT TO ALL REQUIREMENTS AND CONDITIONS OF SAID RESOLUTION. ANY CHANGE, ERASURE, MODIFICATION OR REVISION OF THIS PLAN, AS APPROVED, SHALL VOID THIS APPROVAL.

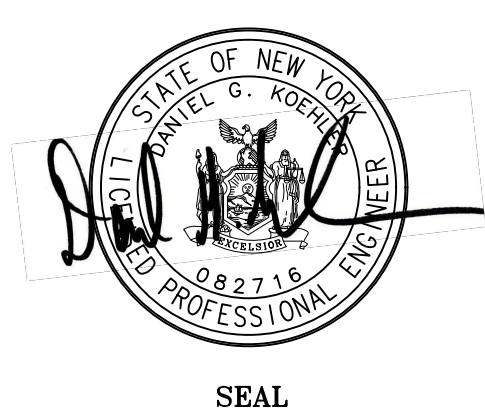
SIGNED THIS \_\_\_\_\_ DAY OF \_\_\_\_\_, 20\_\_\_\_ BY \_\_\_\_\_

CHAIRMAN

SECRETARY

IN ABSENCE OF THE CHAIRMAN OR SECRETARY, THE ACTING CHAIRMAN OR ACTING SECRETARY RESPECTIVELY MAY SIGN IN THIS PLACE.

DRAWN BY: CMB				CHECKED BY: MAB			
REVISIONS:				REVISIONS:			
NO.	DATE	DESCRIPTION	BY	NO.	DATE	DESCRIPTION	BY



**HUDSON LAND DESIGN**  
PROFESSIONAL ENGINEERING P.C.  
174 MAIN ST., BEACON, NEW YORK 12508  
13 CHAMBERS ST., NEWBURGH, NEW YORK 12550  
PH: 845-440-6926  
F: 845-440-6637

**CONSTRUCTION DETAILS 3**  
**TWO CROSS STREET**  
172 MAIN STREET; 2 & 4 CROSS STREET  
CITY OF BEACON  
DUTCHESS COUNTY, NEW YORK  
TAX ID: 5954-27-799966,793967,798971,774986,774997,784996,&777974

**JOB #: 2019-036**  
**DATE: 10/29/19**  
**SCALE: N/A**  
**TITLE: CD-3**  
**SHEET: 6 OF 6**