

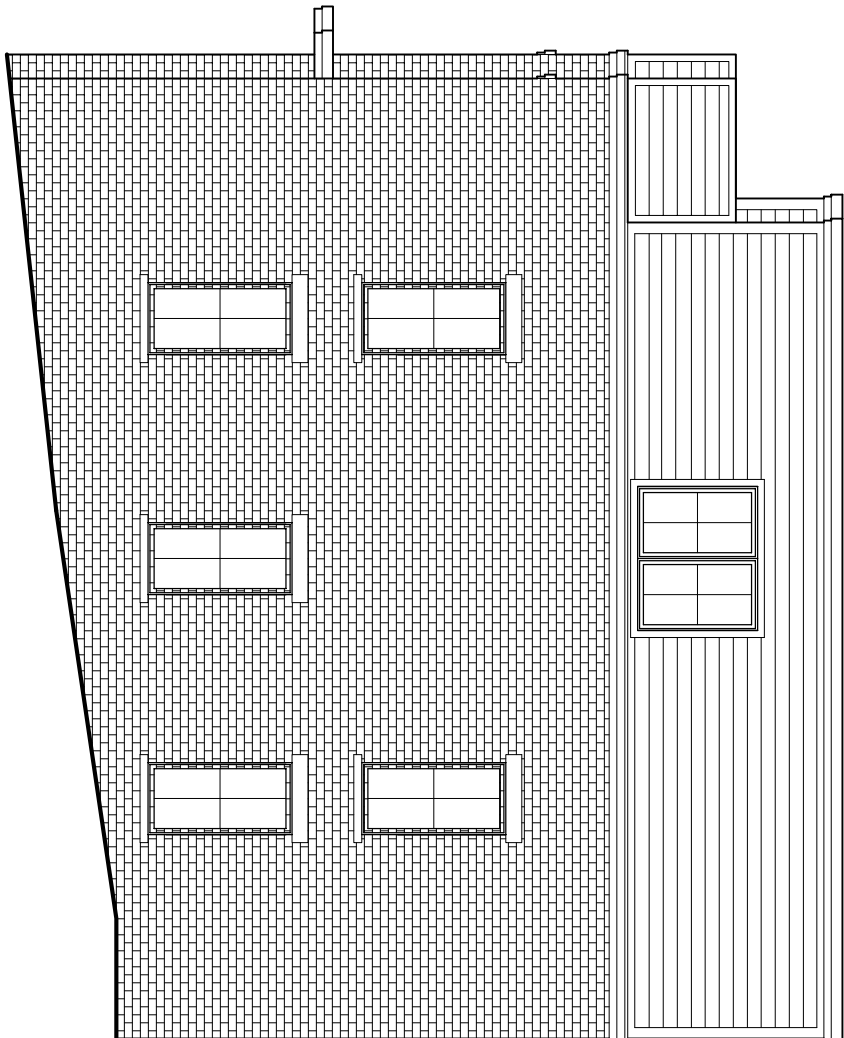
100 PARAFET WALL E.L. =  
74.57' (74' - 6 7/8")

THIRD LEVEL FF E.L. =  
63.15' (63' - 1 3/4")

SECOND LEVEL FF E.L. =  
53.66' (53' - 7 8")

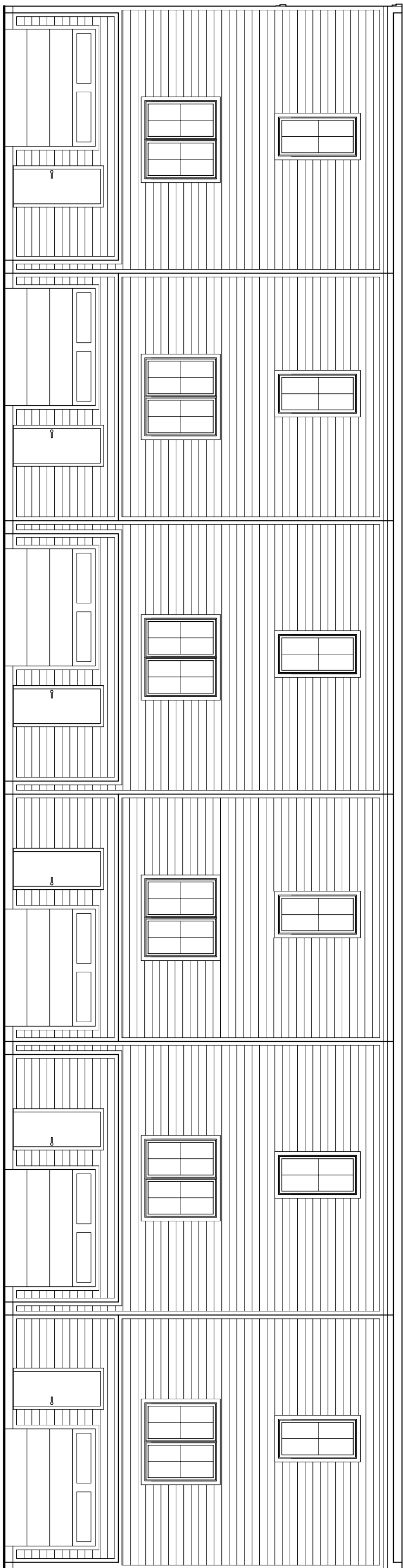
GROUND LEVEL FF E.L. =  
44.5' (44' - 6")

GARAGE FF E.L. =  
44.0' (44'-0")



## West Elevation

## South Elevation



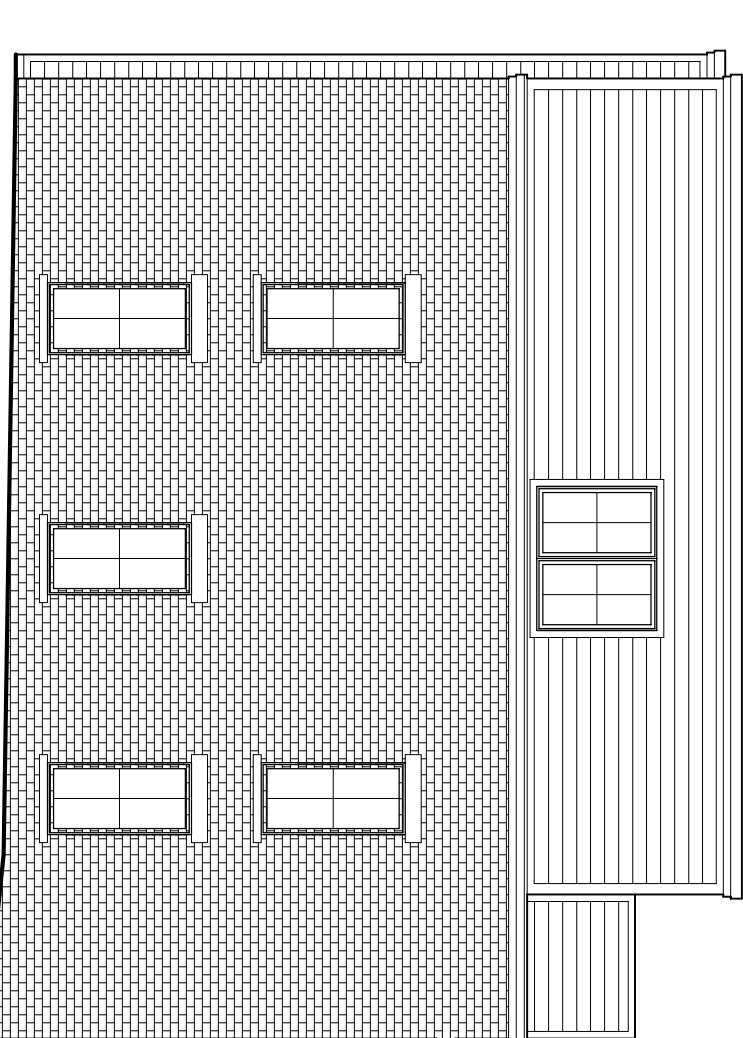
100 PARAFET WALL E.L. =  
74.57' (74' - 6 7/8")

THIRD LEVEL FF E.L. =  
63.15' (63' - 1 3/4")

SECOND LEVEL FF E.L. =  
53.66' (53' - 7 8")

GROUND LEVEL FF E.L. =  
44.5' (44' - 6")

GARAGE FF E.L. =  
44.0' (44'-0")



## East Elevation

## North Elevation

### MATERIAL SPECIFICATIONS:

- 1 - BRICK TO BE MODULAR BRICK COLOR RED CLIFF S12 BY GLEN GERY CORPORATION.
- 2 - ALL WINDOWS TO BE 20 SERIES CASSEMENT WINDOWS PREFINISHED BLACK WITH FOUR (4) LITE 2W x 2H GRILL BY ANDERSON CORPORATION.
- 3 - ALL DOORS TO BE 20 SERIES CASSEMENT DOORS PREFINISHED BLACK WITH FOUR (4) LITE 2W x 2H GRILL BY ANDERSON CORPORATION OR EQUAL.
- 4 - FRONT ENTRY DOOR TO BE DOUBLE (2) 3'-0" x 7'-0" SMOOTH STAIR FIBERGLASS PREFINISHED ONYX WITH FOUR (4) LITE 2W x 2H GRILL AND CLEAR GLASS PANEL BY THERMATRU OR EQUAL.
- 5 - LAP SIDING TO BE HARDIE PLANK 7" EXPOSURE LAP SIDING PREFINISHED IRON GRAY BY JAMES HARDIE BUILDING PRODUCTS, INC.
- 6 - ALL SIDING TRIM AND CORNICE TO BE HARDIEKEM 5/4 TRIM BOARDS PREFINISHED IRON GRAY BY JAMES HARDIE BUILDING PRODUCTS, INC.
- 7 - ALL GUTTERDOWNS TO BE 36" SIGN 2" x 2 1/2" SMOOTH S200 STAINLESS STEEL POST AND 2" x 1 1/8" GRADE A-370 STAINLESS STEEL TOP RAIL BY ALUMINUM EXTRUSION SYSTEMS, INC. OR EQUAL.
- 8 - ARCHITECTURAL METAL PARAFET FLASHING TO BE 24 GA. GALVALUME PROFILE WITH SPECTRA LUME SLATE GRAY FINISH BY ARCHITECTURAL SHEET METAL PRODUCTS, INC OR EQUAL.
- 9 - SECTIONAL OVERHEAD DOOR TO BE CLASSIC STEEL MODEL, TEMPORARY DESIGN PREFINISHED BLACK WITH GLASS WINDOW PANELS BY WAYNE DALTON OR EQUAL.
- 10 - REAR ENTRY DOOR TO BE 3'-0" x 6'-6" SMOOTH STAIR FIBERGLASS PREFINISHED ONYX BY THERMATRU OR EQUAL.

## FERRY LANDING AT BEACON

BEEKMAN AND FERRY STREET  
BEACON, NY 12508

DATE: JUNE 26, 2019

SCALE: 1/8" = 1'-0"

DRAWING:

1 OF 1