

REVISIONS:			
NO.	DATE	DESCRIPTION	BY
1	02/26/19	NO CHANGE	AJS
2	03/26/19	REVISED PER PLANNING BOARD COMMENTS	AJS
3	04/30/19	DRAWING ADDED THIS SUBMISSION	AJS
4	05/28/19	REVISED PER PLANNING BOARD COMMENTS	AJS
5	06/25/19	REVISED PER PLANNING BOARD COMMENTS	AJS

### Eliza Street Building



ROOF:  
CERTAINTED "GRAND MANOR" ARCHITECTURAL ASPHALT SHINGLE ROOF. COLOR: BLACK PEARL

HARDIE BOARD SIDING. COLOR: NIGHT GRAY

EAVES AND TRIM:  
BENJAMIN MOORE COLOR GEORGIAN BRICK HC-50

WINDOWS:  
ANDERSEN 400 SERIES DOUBLE HUNG WINDOW OR APPROVED EQUAL

PORCH TRIM:  
BENJAMIN MOORE PHILLIPSBURG BLUE HC-159

BRICK:  
GLEN GARY COLOR 56DD OR APPROVED EQUAL

Courtyard Elevation



Side Elevation



Side Elevation



STONE:  
EXISTING TO BE RE-USED

Eliza Street Elevation

### Courtyard Building



Rear Elevation



Side Elevation

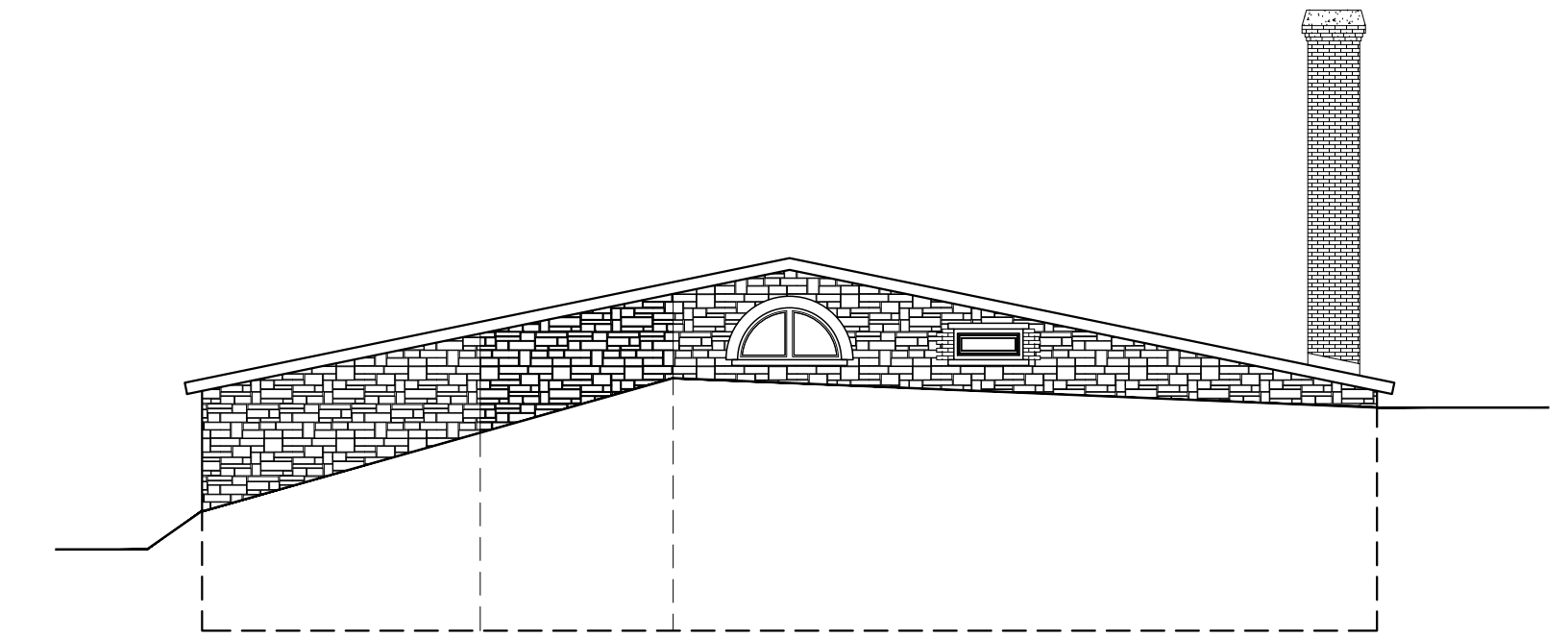


Side Elevation

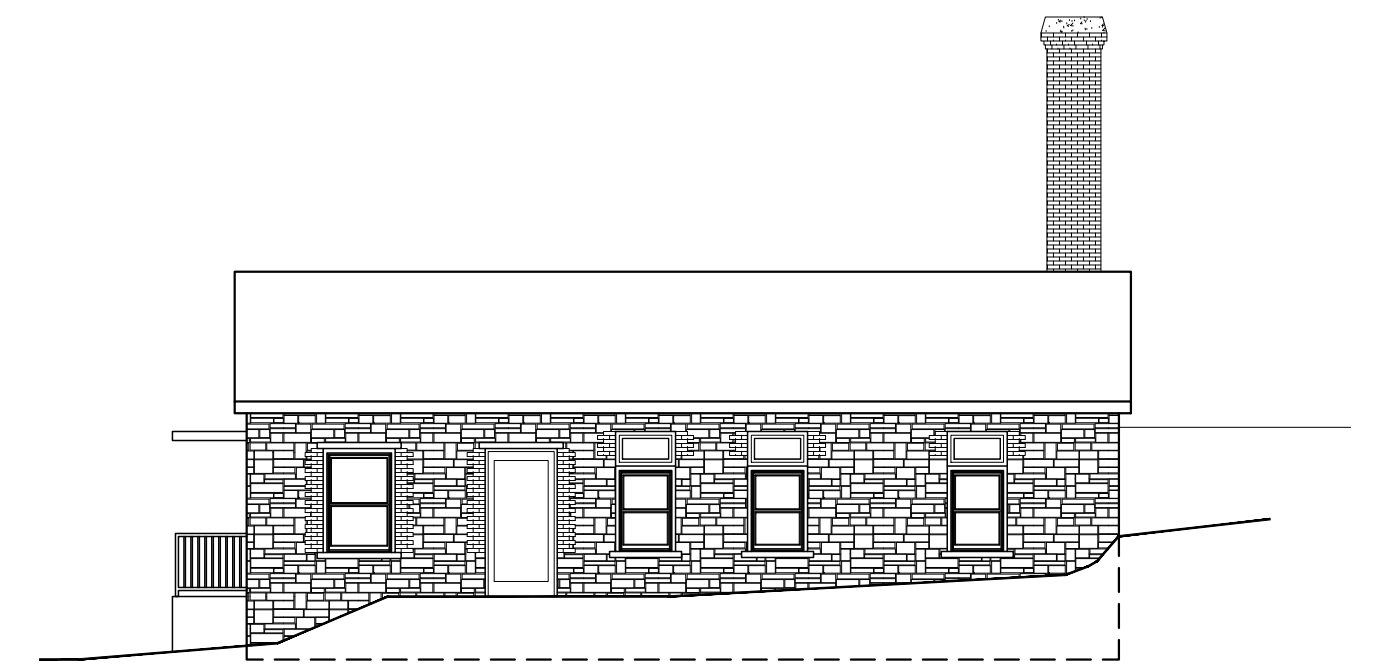


Courtyard Elevation

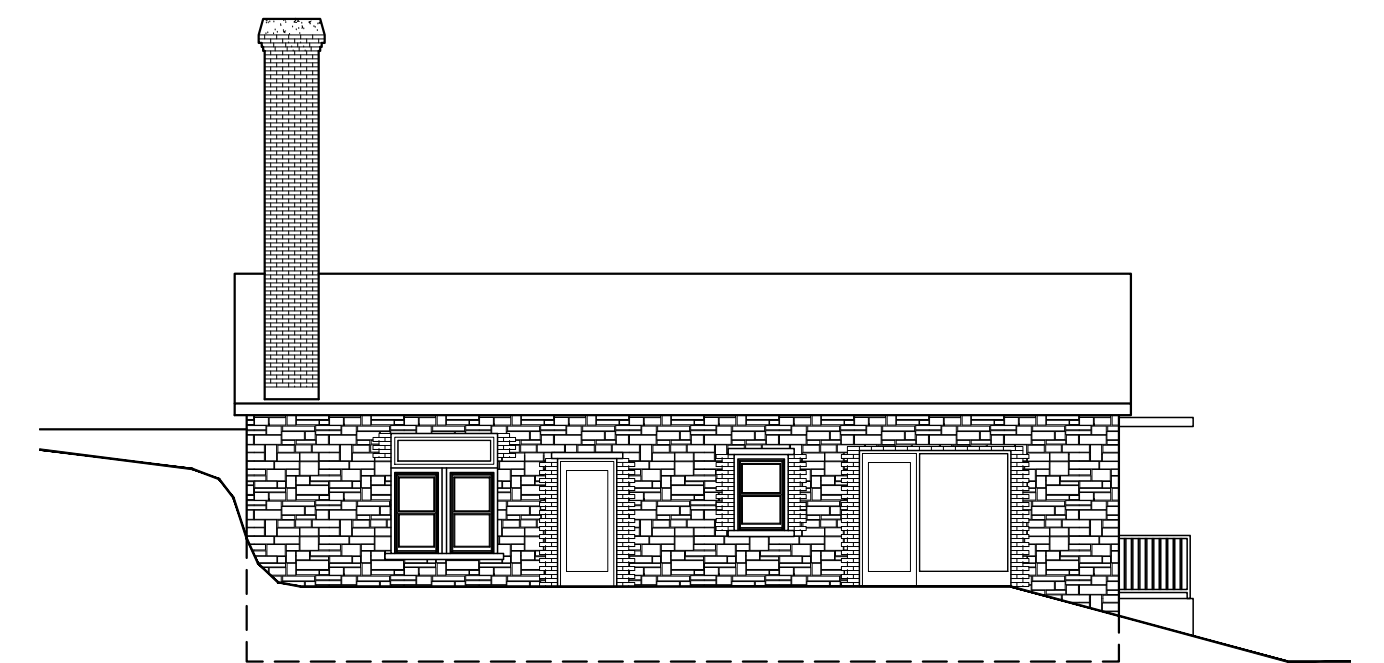
### Existing Stone Building



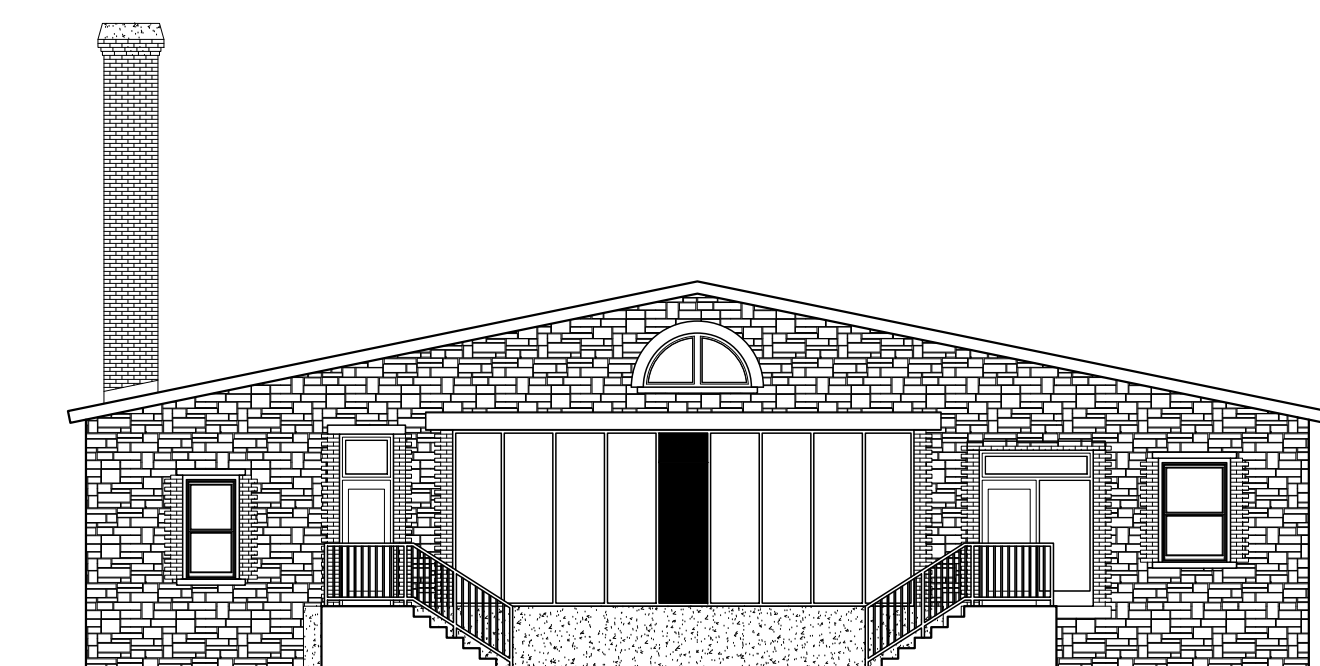
Rear Elevation



Side Elevation



Side Elevation



ROOF:  
CERTAINTED "GRAND MANOR" ARCHITECTURAL ASPHALT SHINGLE ROOF. COLOR: BLACK PEARL

STONE & BRICK SURROUND:  
EXISTING TO REMAIN

EAVES AND TRIM:  
BENJAMIN MOORE COLOR GEORGIAN BRICK HC-50

WINDOWS:  
ANDERSEN 400 SERIES DOUBLE HUNG WINDOW OR APPROVED EQUAL

Courtyard Elevation

# Site Plan Application

Sheet 5 of 13 - Elevations