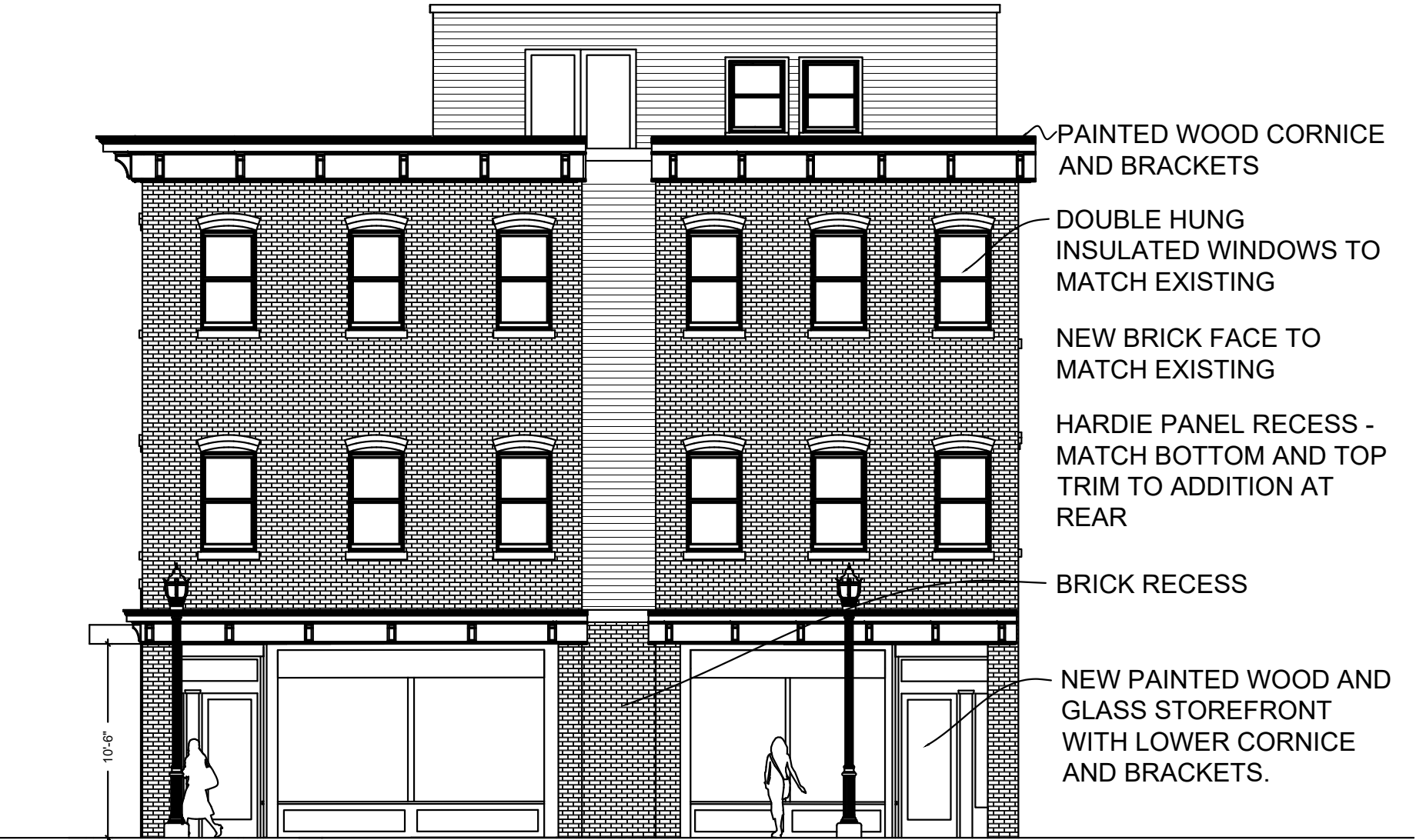
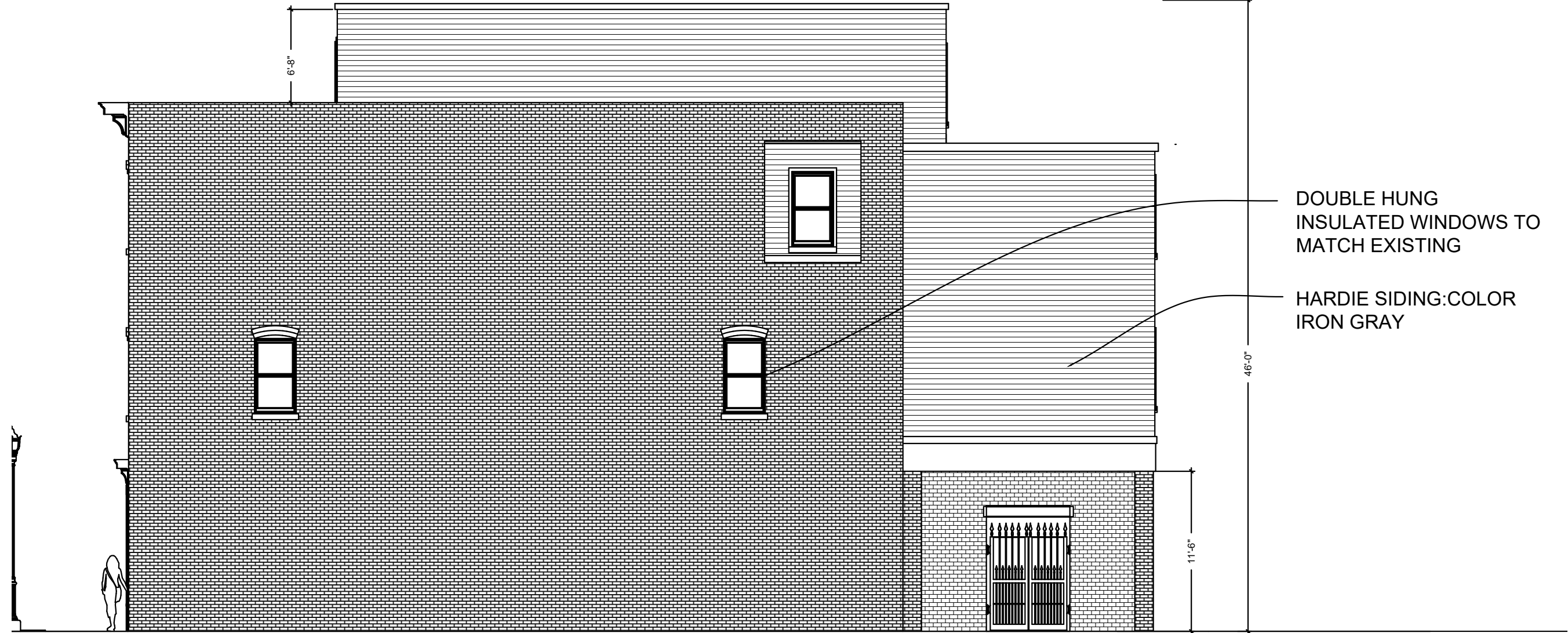


REVISIONS:			
NO.	DATE	DESCRIPTION	BY
1	4/30/19	REVISED PER PLANNING BOARD COMMENTS	AJS
2	5/28/19	REVISED PER PLANNING BOARD COMMENTS	AJS
3	6/25/19	REVISED PER PLANNING BOARD COMMENTS	AJS



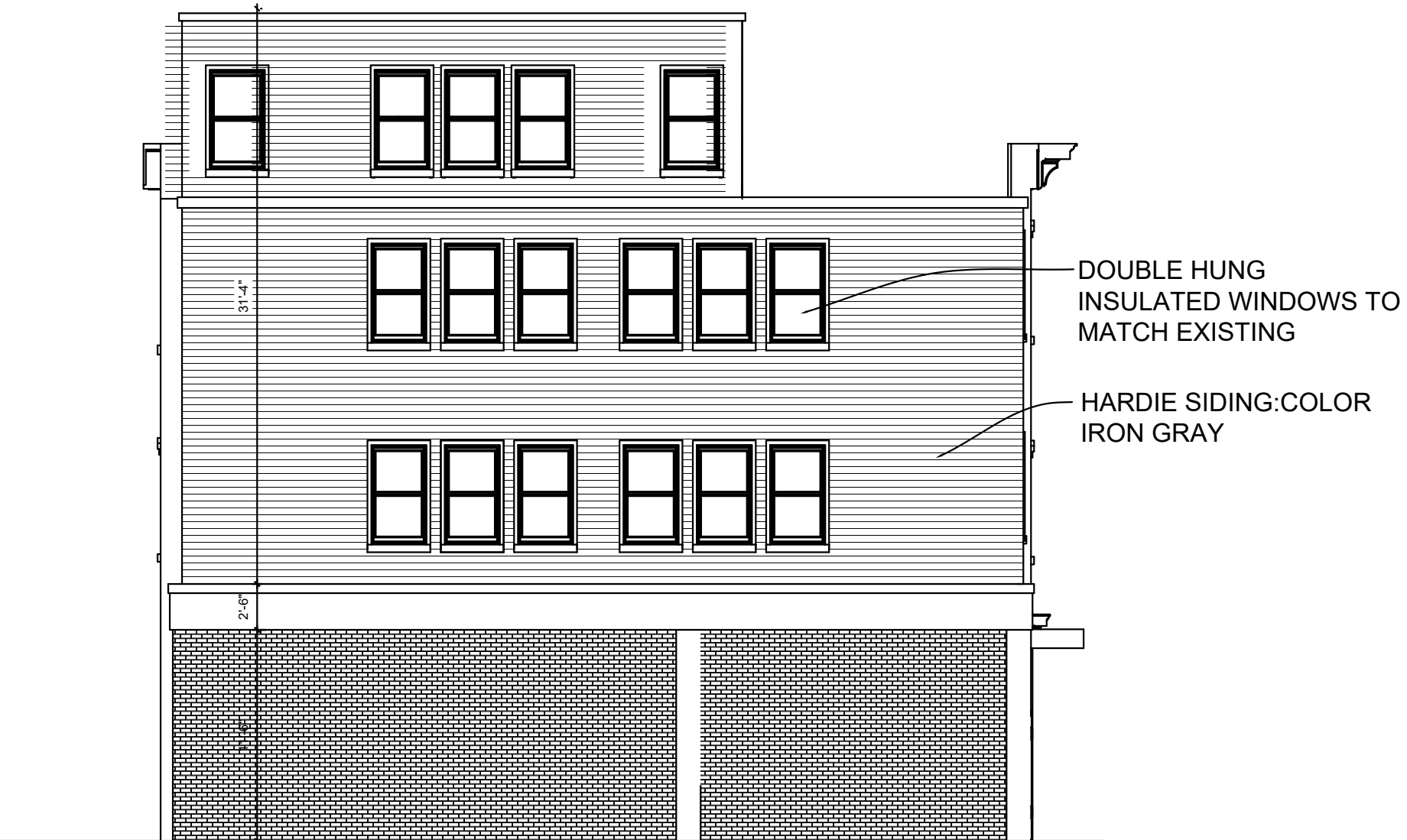
Front Elevation

Scale: 1/2" = 1'-0"



Side Elevation

Scale: 1/2" = 1'-0"



Rear Elevation

Scale: 1/2" = 1'-0"



Side Elevation (Digger Phelps Court)

Scale: 1/2" = 1'-0"



VIEW FROM MAIN STREET



VIEW FROM DIGGER PHELPS COURT

NOTE: RENDERINGS ARE FOR GENERAL APPEARANCE.

# Amendment to Site Plan Application

Sheet 4 of 6 - Elevations