



[Re]pairing homes
[Re]vitalizing communities
[Re]building lives

Safe homes and communities for everyone

Rebuilding Together Dutchess County

Vision: Safe homes and communities for everyone.

Mission: Repairing homes, revitalizing communities, rebuilding lives.

Who we are: RTDC is committed to providing cost-free safe and healthy home repairs to ensure housing stability for income-restrained homeowners and nonprofits.

Impact: The impact of our efforts extends beyond the individual families and nonprofit organizations we serve, as our work revitalizes and stabilizes vulnerable neighborhoods and communities across Dutchess County.

Community Impact

Revitalize & Stabilize
vulnerable neighborhoods
& communities across
Dutchess County.

IN **27 YEARS** OF
REPAIRING HOMES, REVITALIZING
COMMUNITIES & REBUILDING LIVES



GATHERED & TRAINED

13,812

VOLUNTEERS



WHO

DONATED OVER

129,173

HOURS

PERFORMED REPAIRS ON

776 
HOMES

&

4 NONPROFIT
FACILITIES
  

MARKET VALUE OF DONATED SERVICES

 **\$6.6 MILLION** 

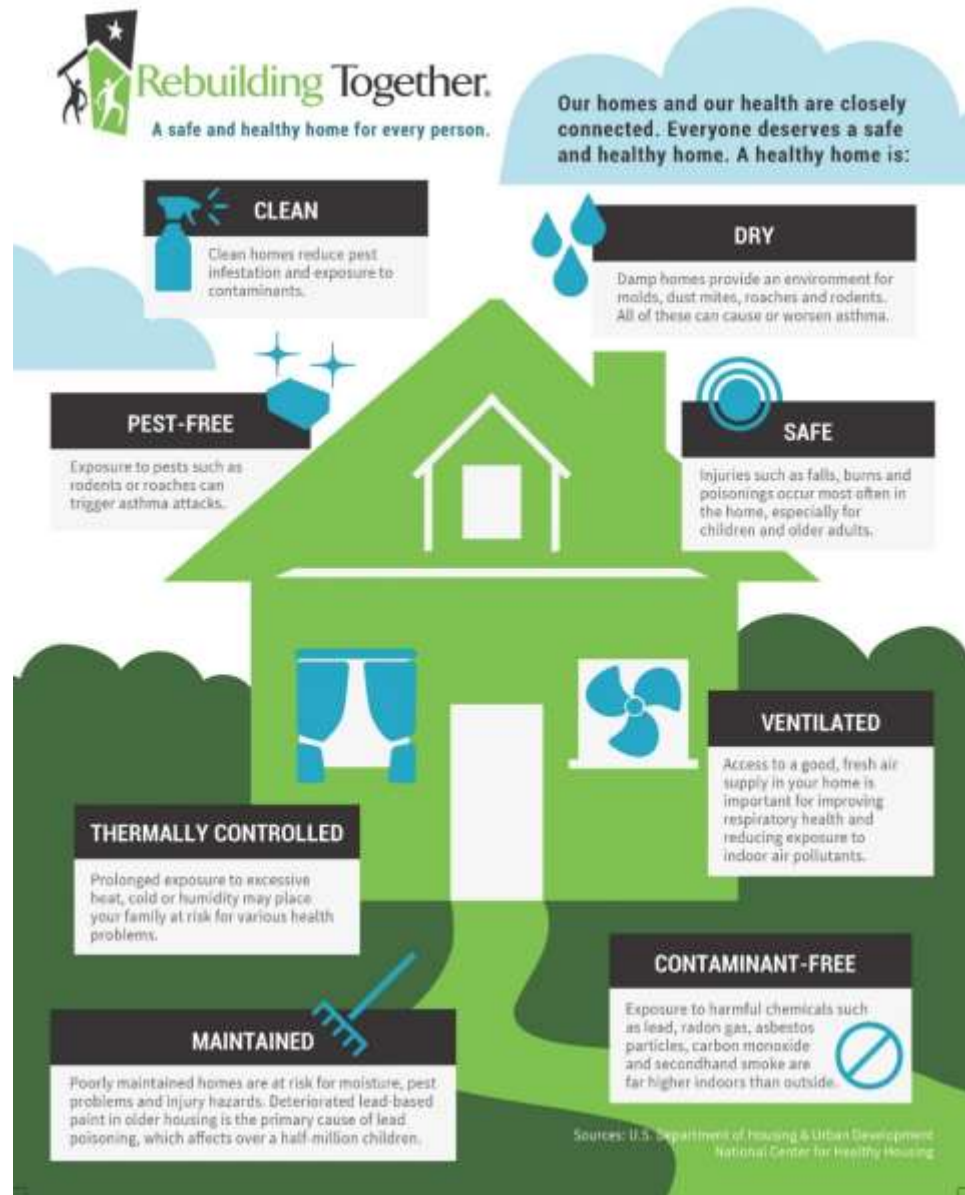
Why Repair?

- ✓ Address health and safety risks
- ✓ Preserve and restore aging housing stock
- ✓ Enable seniors and individuals living with disabilities to live independently and safely in their homes
- ✓ Reduce energy consumption and costs for our clients
- ✓ Stabilize properties and their values to prevent neighborhoods from further decline



A Whole House Approach

A systematic, science-based approach to improving homes based on 25 critical health & Safety priorities



Rebuilding Together Programs

Selecting the right program for the individual homeowner's needs.

Need A Few Home Repairs?

We can help!

Rebuilding Together Dutchess County provides no-cost home repairs for income-qualifying homeowners in Dutchess County.

Rebuilding Together Dutchess County (RTDC) is a 501c3 nonprofit that receives funding, in part, from federal and local grants, community support, and donated volunteer labor and supplies. There is never a cost to eligible homeowners.



Rebuilding Together.
Dutchess County

Call or visit RTDC online for more information.

(845)454-7310
rtdutchess.org

Large-Scale Repair Service

A critical repair or modification can include most repairs necessary to maintain a safe and healthy living environment. Critical repairs do not include decorative or stylistic changes or additions.



Stair, roof, porch and other critical structural repairs



Intact and contaminant-free paint and wall covering repairs



Wheelchair ramps, stairlifts, and expanded doorways



Heating, cooling, and electrical system repairs



Plumbing, moisture, and active water leak repairs



Accessible bathroom modifications



Grab bars, hand rails, and minor accessibility upgrades



Energy efficiency upgrades and improved lighting



Working and code-compliant smoke and carbon monoxide alarms

Programs



REBUILDING DAYS

Volunteers come together to complete large-scale home repair and accessibility projects for low-income homeowners throughout the year. On National Rebuilding Day and Fall Rebuilding Day, hundreds of volunteers complete several homes in a single day. Projects often include deferred maintenance repairs valued at over \$20,000.



HANDYMAN

This year-round program provides minor home repairs and accessibility modifications for low-income homeowners.



HOME SAFETY & FIRE PREVENTION

This program provides installations of smoke and carbon monoxide detectors, fire extinguishers, exterior motion-activated lighting, and reflective house numbers with teams of volunteers. Volunteers are also trained to educate homeowners about fire preparedness and assess any additional safety and health concerns that could be addressed by another Rebuilding Together program.



COMMUNITY STRONG PROGRAM

This program provides improvements to a variety of nonprofit facilities and common spaces used by thousands of Dutchess County residents, including community parks and gardens, senior centers, homeless shelters, and low-income daycare facilities.

Application Process

Eligibility:

- ☐ 80% or below the county household median income level
- ☐ Home located in Dutchess County and owner-occupied
- ☐ Mortgage and property and/or school tax payment are current
- ☐ Active homeowner's insurance policy
- ☐ Home value is \$275,000 or less

Application Cycle:

- ☐ Large-scale *Rebuilding Day* project applications accepted June – September
- ☐ Small-Scale project applications accepted year-round



OUR WORKFLOW



Government
Grants



Community & Private
Foundations



Corporate &
Civic Sponsors



Individual
Donors



Fundraising
Events



Homeowner
Applications

+



300
Volunteers



four
Staff



In-kind
Materials

=



10-25 CRITICAL REPAIRS



10 HANDYMAN



125 HOME SAFETY



2 COMMUNITY STRONG

Contact Us

Christina Boryk, Executive Director

Rebuilding Together Dutchess
County

christina@rtdutchess.org

Office: 845-454-7310

STAY CONNECTED

rtdutchess.org

Facebook & Twitter: @RTDutchess

Instagram: @RTDutchessCounty

