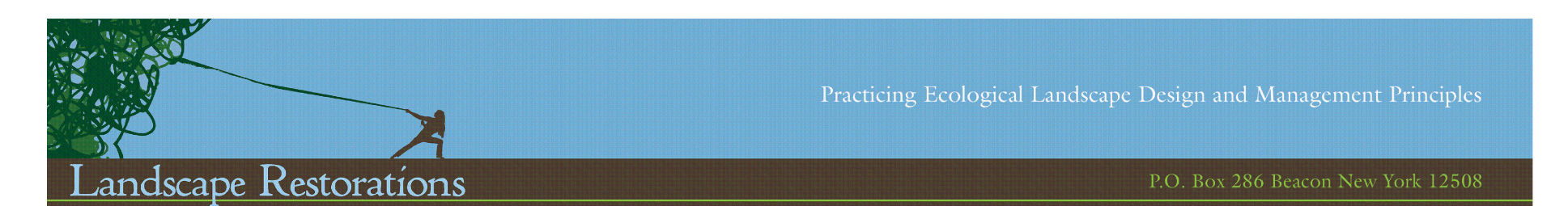
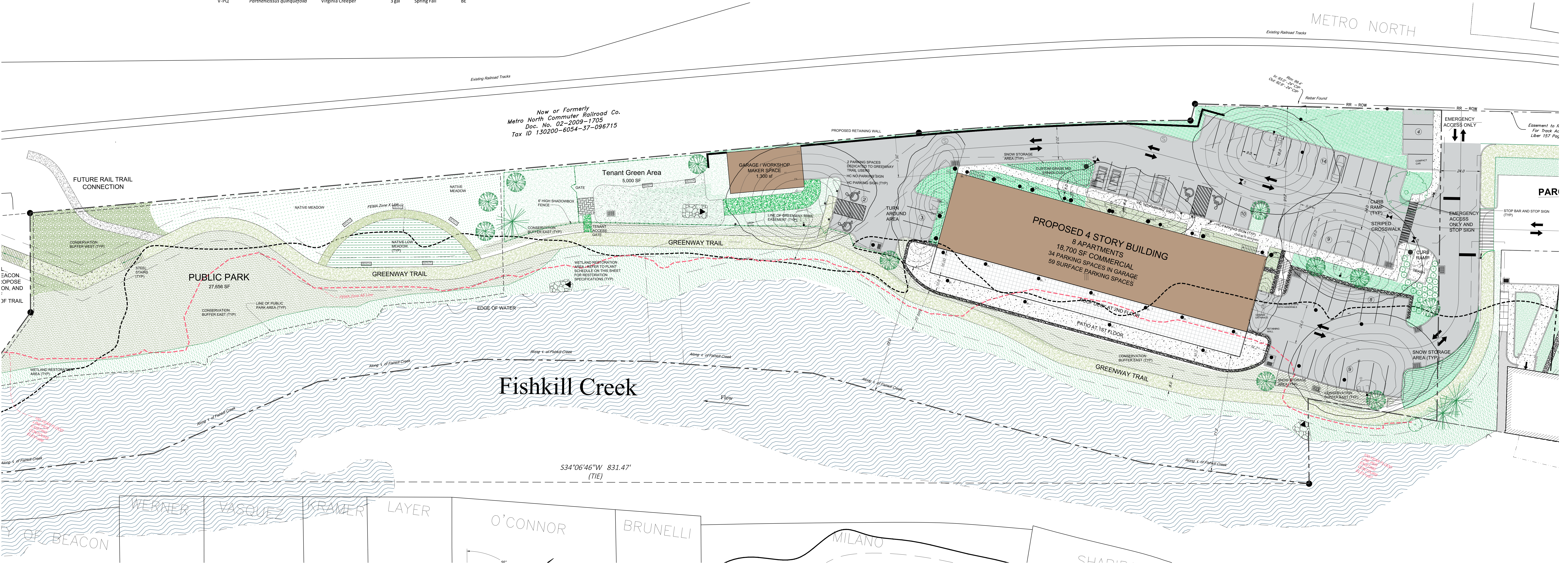


PLANT SCHEDULE		23-28 Creek Drive				
PHASE ONE		Beacon				
Created and compiled by D. Adamsons December 15 2018						
QUANTITY	KEY	BOTANIC NAME	COMMON NAME	SIZE	Planting Time	AREA
FERNS						
Trays	F-DP	<i>Dernstaedtia punctilobula</i>	Hay-scented fern	Plugs	Spring Fall	NM,CBE,CBW
Trays	F-DI	<i>Wagneria intermedia</i>	Evergreen Wood Fern	Plugs	Spring Fall	CBE
Trays	F-OC	<i>Osmunda cinnamomea</i>	Cinnamon Fern	Quarts	Spring Fall	WR,CBE
Trays	F-PA	<i>Polystichum acrostichodes</i>	Christmas Fern	Plugs	Spring Fall	BE,NM,CBW,CBE
GRASSES						
Trays	G-AG	<i>Andropogon gerardii</i>	Big Bluestem	Plugs	Spring Summer	BE,NM,CBW
Trays	ECO LAWN	<i>Buchloe dactyloides</i> 'Texoka'	Eco Lawn	Plugs	Spring Summer	BE
Trays	G-CA	<i>Carex appalachica</i>	Appalachian Sedge	Plugs	Spring Summer	BE,CBE,CBW,WR
Trays	G-CB	<i>Carex bromoides</i>	Bromoidike Sedge	Plugs	Spring Summer	BE,CBE,CBW,WR
Trays	G-CP	<i>Carex pensylvanica</i>	Sedge	Plugs	Spring Summer	BE,CBE,CBW,WR
Trays	G-CL	<i>Chasmanthium latifolium</i>	Northern Sea Oats	Plugs	Spring Summer	BE,CBE,CBW,HCS
Trays	G-PV	<i>Panicum virgatum</i>	Indian Switchgrass	Plugs	Spring Summer	BE,NM,HCS
Trays	G-SS	<i>Schizachyrium scoparium</i>	Little Bluestem	Plugs	Spring Summer	BE,NM,HCS
HERBACEOUS						
Trays	H-AT	<i>Asclepias incarnata</i>	Swamp Milkweed	Plugs	Spring Summer	WR
Trays	H-AI	<i>Asclepias tuberosa</i>	Butterfly Milkweed	Plugs	Spring Summer	NM,CBE,CBW
Trays	H-AT	<i>Arisaema tomentosum</i>	Common Bluestar	Plugs	Spring Summer	WR,NM
Trays	H-A	<i>Asters</i>	Aster(HV and Woodland)	Plugs	Spring Summer	WR,NM
Trays	H-IC	<i>Iris cristata</i>	Crested Iris	Plugs	Spring Summer	WR
Trays	WR	<i>Polemonium reptans</i>	Jacob's Ladder	Plugs	Spring Summer	WR
Trays	H-S	<i>Solidago</i>	Goldenrod	Plugs	Spring Summer	WR,NM
Trays	H-T	<i>Trillium</i>	Trillium	Plugs	Spring Summer	WR
Trays	H-V	<i>Viola</i>	Violet	Plugs	Spring Summer	WR,BE,CBE,CBW
SHRUBS						
S-AA		<i>Amorpha fruticosa</i>	Indigo Bush	5gal	Spring Fall	WR,CBE,CBW
S-AF		<i>Aronia arbutifolia</i>	Red Chokeberry	3gal	Spring Fall	WR,BE
S-AM		<i>Aronia melanocarpa</i>	Black Chokeberry	3gal	Spring Fall	WR,BE
S-CP		<i>Comptonia peregrina</i>	Sweetfern	1gal	Spring Fall	ALL
S-DL		<i>Dirca villosa</i>	White Yewclade	10gal	Spring Fall	WR,NM,CBE,CB
S-HS		<i>Hemodorum virginica</i>	Witch Ham	3gal	Spring Fall	CBE,CBW
S-IG		<i>Ilex glabra</i>	Boxhoney	10gal	Spring Fall	BE,CBW
S-IvF		<i>Ilex verticillata</i> female	Winterberry	7gal	Spring Fall	WR,CNE,CBW,N M
S-IvM		<i>Ilex verticillata</i> male	Winterberry	7gal	Spring Fall	WR,CBE,CBW,N M
S-LB		<i>Lindera benzoin</i>	Spicebush	10gal	Spring Fall	WR
S-MP		<i>Myrica pensylvanica</i>	Bayberry	5gal	Spring Fall	WR,NM,HCS
S-RA		<i>Rhus aromatica</i>	Aromatic sumac	3gal	Spring Fall	BE,NM,NM
S-RC		<i>Rosa carolina</i> Rose	3gal	Spring Fall	CBE,NM,WR	
S-RO		<i>Rubus odoratus</i>	Flowering Raspberry	3gal	Spring Fall	WR,NM,WR,CBE
S-SX		<i>Xanthoxantho simplicissimu</i>	Yellowroot	Plugs	Spring Fall	CW
TREES						
T-AB		<i>Abies balsamea</i>	Balsam Fir	5-7'	Spring Fall	CBW,NM
T-AC		<i>Acer rubrum</i>	Red Maple	5-7'	Spring Fall	WR,BE
T-AR		<i>Amenclancher canadensis</i>	Serviceberry	5-6'	Spring Fall	WR,BE,CBW,BE
T-BL		<i>Betula lenta</i>	Black Birch	4-5'	Spring Fall	WR,CBW
T-BP		<i>Betula populifolia</i>	Grey Birch	4-5'	Spring Fall	ALL
T-CF		<i>Carpinus carolina</i>	American Hornbeam	5'	Spring Fall	CBE,CBW
T-CT		<i>Chamaecyparis thyoides</i>	Atlantic White Cedar	5-7'	Spring Fall	WR
T-CF		<i>Cornus florida</i>	Flowering Dogwood	5-7'	Spring Fall	BE,NM
T-CP		<i>Crataegus phaeopynium</i>	Washington Hawthorn	5-7'	Spring Fall	BE
T-IO		<i>Ilex opaca</i>	American Holly	5-7'	Spring Fall	BE,CBW
T-IV		<i>Juniperus virginiana</i>	Eastern Red Cedar	5'	Spring Fall	BE,NM
T-NS		<i>Nyssa sylvatica</i>	Blackgum	6-7'	Spring Fall	WR,NM
T-OV		<i>Ostrya virginiana</i>	Eastern Hob-Hornbeam	5-7'	Spring Fall	WR
T-PR		<i>Picea rubens</i>	Red Spruce	5-9'	Spring Fall	BE,CBW
T-PV		<i>Pinus virginiana</i>	Scrub Pine	5-9'	Spring Fall	BE,CBW
T-PO		<i>Platanus occidentalis</i>	American Sycamore	7'	Spring Fall	WR
T-PA		<i>Prunus serotina</i>	Wild Black Cherry	3-4'	Spring Fall	NM,WR,CBE,CB
T-SD		<i>Salix discolor</i>	Pussy Willow	5'	Spring Fall	WR,CBE
T-QI		<i>Quercus ilicifolia</i>	Scrub Oak	8-10'	Spring Fall	NM,BE
T-VI		<i>Viburnum prunifolium</i>	Blackhaw	6-7'	Spring Fall	WR
VINES						
V-PQ		<i>Parnthenociss quinquefolia</i>	Virginia Creeper	3gal	Spring Fall	BE

**NOTE: FOR DETAILS OF SEED MIXES,
REFER TO SEPARATE DOCUMENT
ENTITLED "23-28 CREEK DRIVE SEED MIX
COMPOSITION BREAKDOWN PER AREA"**



1. Tree Protection shall be built around all trees designated by Owner. See LEGEND. This task shall be performed and/or supervised by an arborist associated with Landscape Designer.
2. Tree Protection shall be honored by General Contractor, and all Contractors, and remain in place for life of project development.
3. A penalty for tree damage and non-compliance with Tree Protection shall be discussed at first Site Meeting and written into GC contract and each penalty shall be billed to General Contractor.
4. Tree Protection is defined as sturdy stakes every 4' connected by strong fencing (not orange nylon fencing) built outside each CRZ(Critical Root Zone), with KEEP OUT:PROTECTED TREE signs.
5. CRZ is defined as extending from the trunk to just outside the Drip Line, or a distance of 1.5' per inch of DSH(Diameter at Standard Height), whichever is greater.
6. Under Penalty, the following activities are not allowed within the CRZ:
 - a. Stockpiling of construction materials or demo debris
 - b. Vehicle or equipment parking
 - c. Trenching for utility installation or repair(unless pre-approved)
 - d. Changing soil grade by cutting or filling
 - e. Damaging of roots by grading, tearing or grubbing
 - f. Compaction of soil by equipment, vehicles, material storage and/or foot traffic
 - g. Contaminating soil from washing out equipment(specially concrete) and vehicle maintenance
 - h. Attaching anything to trees with nails, screws and/or spikes
 - i. Wound or break tree trunks or branches through contact with vehicles and heavy equipment
 - j. Wound trunks by string weed trimmers and lawn mowers
 - k. Cause injury by fire or excessive heat
7. Most tree roots over 4" are likely to be structural roots. Cutting these roots could cause future catastrophic failure.
8. Make all needed cuts to tree roots cleanly with sharp tools to encourage good wound closure; never tear with a backhoe.
9. After project completion, maintain an "invisible" passive TPZ (Tree Protection Zone) around all important trees though-out their lives by maintaining a mulched, grass-free area around the tree so weed trimmers and mowers are always kept at bay and foot traffic is kept off the inner CRZ.



23 - 28 Creek Drive
Beacon, New York
Scale: As Noted
October 23, 2018