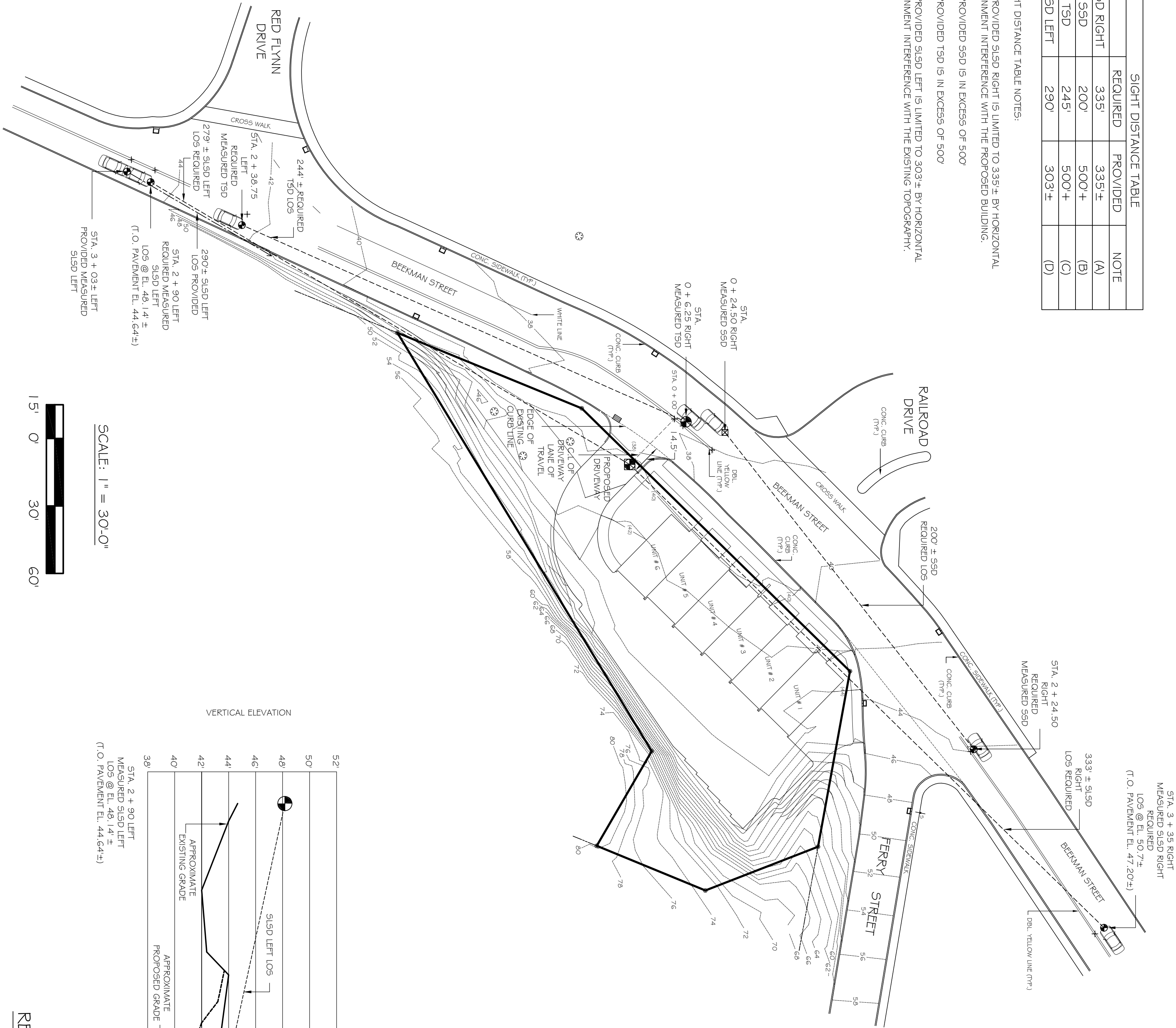


SIGHT DISTANCE TABLE			
	REQUIRED	PROVIDED	NOTE
S1SD RIGHT	335'	335'±	(A)
SSD	200'	500'±	(B)
TSD	245'	500'±	(C)
S1SD LEFT	290'	303'±	(D)

SIGHT DISTANCE TABLE NOTES:  
(A) PROVIDED S1SD RIGHT IS LIMITED TO 335'± BY HORIZONTAL ALIGNMENT INTERFERENCE WITH THE PROPOSED BUILDING.  
(B) PROVIDED SSD IS IN EXCESS OF 500'  
(C) PROVIDED TSD IS IN EXCESS OF 500'  
(D) PROVIDED S1SD LEFT IS LIMITED TO 303'± BY HORIZONTAL ALIGNMENT INTERFERENCE WITH THE EXISTING TOPOGRAPHY.

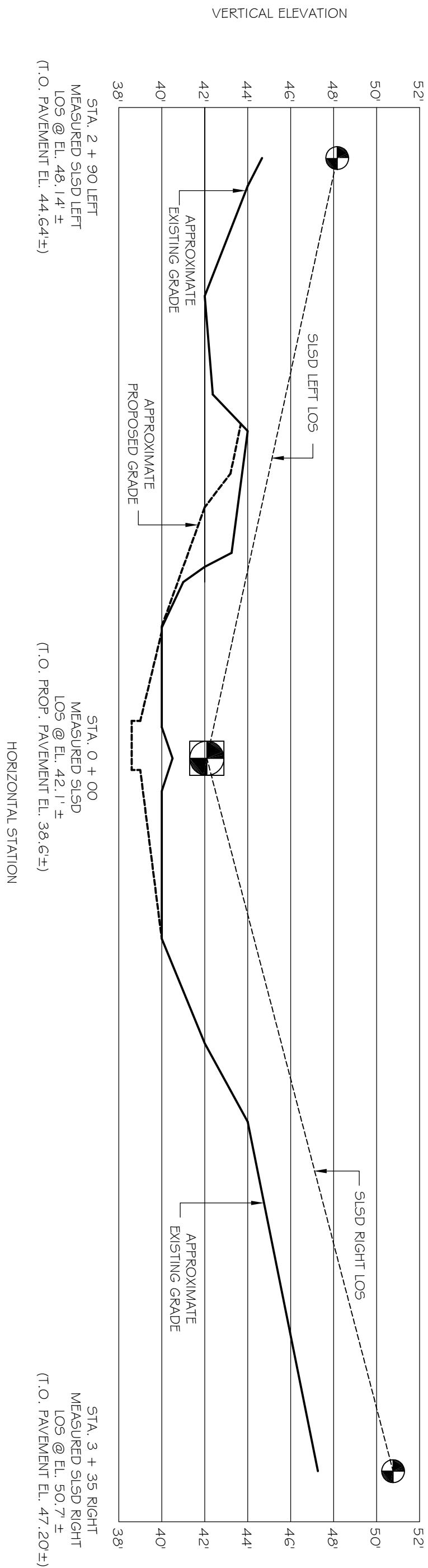


DRIVEWAY SIGHT DISTANCE NOTES

1. DRIVEWAY SITE DISTANCE REQUIREMENTS IN CONFORMANCE WITH THE STANDARDS CONTAINED IN THE NEW YORK STATE DEPARTMENT OF TRANSPORTATION'S "DESIGN MANUAL FOR HIGHWAYS" (DMH-2) AND THE AASHTO PUBLICATION TITLED "A POLICY ON GEOMETRIC DESIGN OF HIGHWAYS AND STREETS" DATED 2011.
2. DRIVEWAY SIGHT DISTANCE DESIGN BASED ON THE FOLLOWING:  
A) 30 MPH DESIGN SPEED ON MAJOR ROAD WITH NO ADJUSTMENT FACTORS FOR SIGHT DISTANCES BASED ON APPROACH GRADE.  
B) DRIVEWAY INTERSECTION WITH NO TRAFFIC CONTROL ON THE MAJOR ROAD AND STOP CONTROL ON THE DRIVEWAY.  
C) 335' STOP LINE SIGHT DISTANCE (S1SD) FOR LEFT TURN FROM STOP - 1 LANE CROSSED.  
D) 290' STOP LINE SIGHT DISTANCE (S1SD) FOR RIGHT TURN FROM STOP - 1 LANE CROSSED.  
E) 200' STOPPING SIGHT DISTANCE (SSD) ON MAJOR ROAD.  
F) 245' TURNING SIGHT DISTANCE (TSD) SITE DISTANCE FOR LEFT TURN FROM MAJOR ROAD - 1 LANE CROSSED.
3. STOP LINE SIGHT DISTANCE (S1SD) AND TURNING SIGHT DISTANCE (TSD) ARE MEASURED AT 42' ABOVE DRIVEWAY SURFACE AND ROAD PAVEMENT SURFACE (DRIVER EYE ELEVATION).
4. STOPPING SIGHT DISTANCE (SSD) IS MEASURED FROM 42' ABOVE ROAD PAVEMENT SURFACE (DRIVER EYE ELEVATION) TO 24' ABOVE ROAD PAVEMENT SURFACE (BRAKE LIGHT ELEVATION).
5. A SIGHT DISTANCE EASEMENT FOR THE PURPOSE OF PROVIDING EGRESS FROM THE PROPOSED DRIVEWAY ACROSS ALL LOTS AND COMMON AREAS WILL BE PROVIDED.

SIGHT DISTANCE SYMBOLS

- DRIVER LOCATION AT 42' ABOVE DRIVEWAY SURFACE ELEVATION AT STOP
- DRIVER LOCATION AT 42' ABOVE ROAD SURFACE ELEVATION
- BRAKE LIGHT LOCATION AT 24' ABOVE ROAD SURFACE ELEVATION
- LOS
- LINE OF SIGHT
- S1SD
- STOP LINE SIGHT DISTANCE
- SSD
- STOP SIGHT DISTANCE
- TSD
- TURNING SIGHT DISTANCE



REQUIRED STOP LINE SIGHT DISTANCE PROFILE

HORIZONTAL SCALE: 1" = 50'  
VERTICAL SCALE: 1" = 5'

SIGHT DISTANCE PLAN  
FOR  
FERRY LANDING AT BEACON  
BEEKMAN AND FERRY STREET  
BEACON, NY 12508

FERRY LANDING AT BEACON, LTD  
DEVELOPERS · DESIGNERS · BUILDERS  
POST OFFICE BOX 294  
BEACON, NY 12508

DATED: MARCH 20, 2019  
SCALE: 1" = 30'-0"