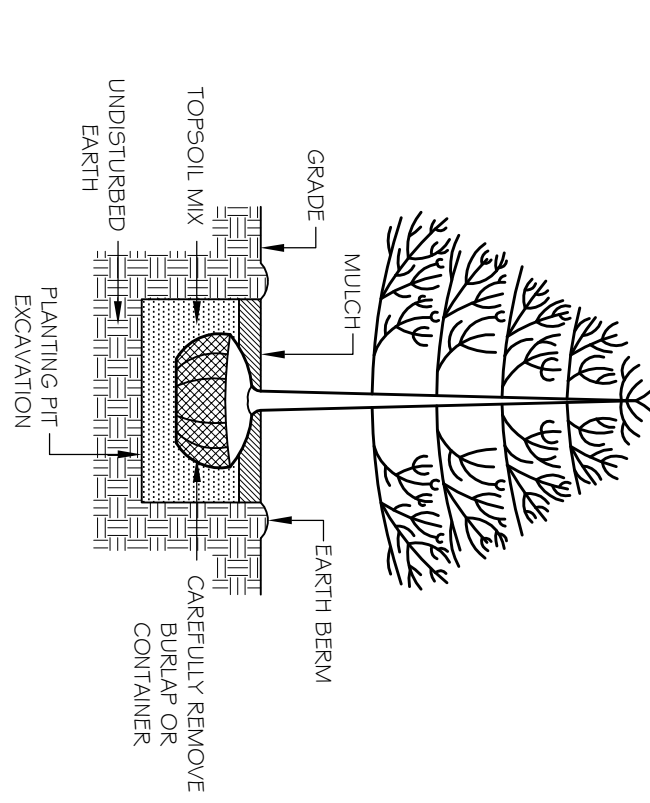


FOR

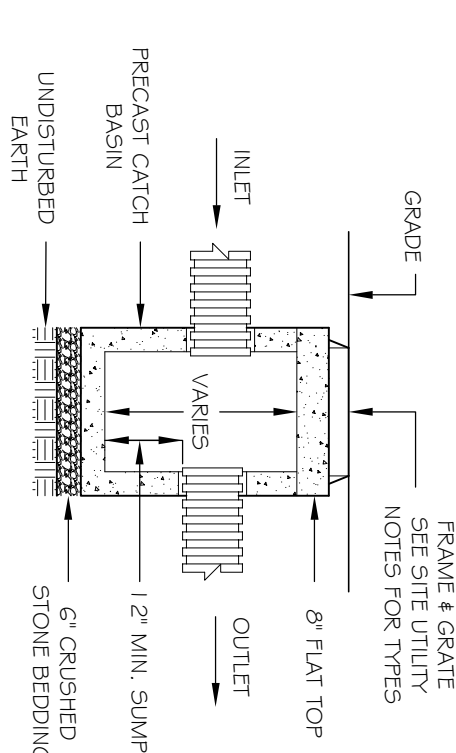
BEEKMAN AND FERRY STREET
BEACON, NY 12508

B&B OR CONTAINER PLANTS

1. TRIM OR CUT ANY DAMAGED, DISEASED, BROKEN OR WEAK BRANCHES IMMEDIATELY AFTER PLANTING.
2. PLANTING BED EXCAVATION TO BE 2X WIDTH OF ROOT BALL & SOIL 3X WIDTH OF ROOT BALL IN ROCK.
3. MAINTAIN TOP OF ROOT BALL FLUSH WITH SOIL SURFACE OR 1"-2" ABOVE SOIL SURFACE. DO NOT COVER TOP OF ROOT BALL WITH SOIL.
4. TOPSOIL MIX TO BE 2 PARTS TOPSOIL TO ONE PART ORGANIC MULCH.
5. PLANTS IN CONTAINERS - REMOVE CONTAINER AND GROWER ROOTS OFF POT, ROOT BALL PLANTS BY GENTLY SCORING OR PULLING ROOTS OFF.
6. STAKE TREES ONLY IF NECESSARY. STAKING IS NOT REQUIRED IF INSTALLED STAKING MUST BE REMOVED NO LATER THAN ONE YEAR AFTER PLANTING.

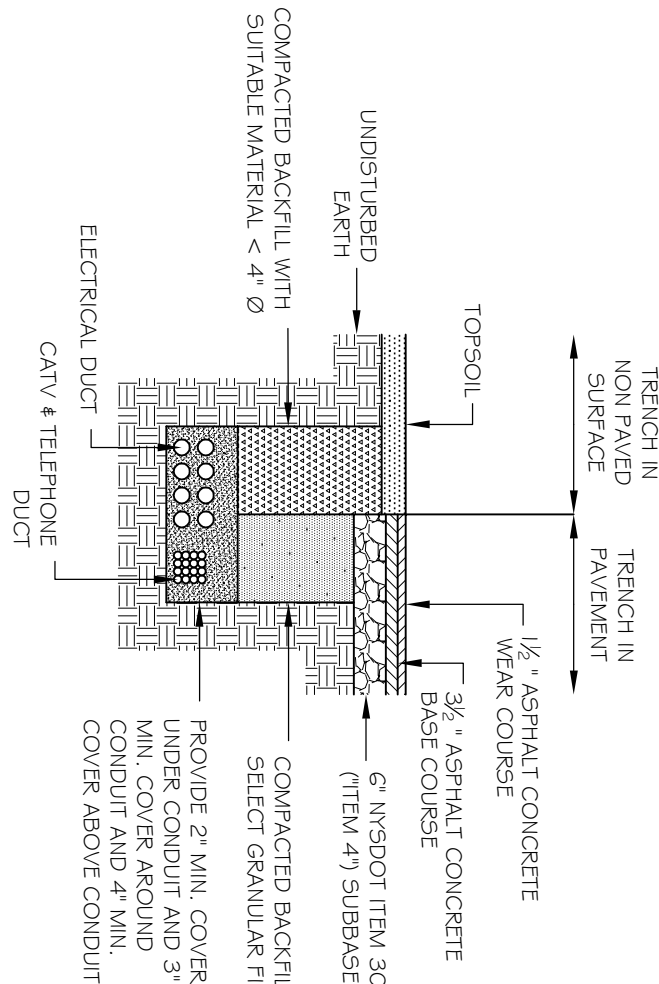


CATCH BASIN DETAIL



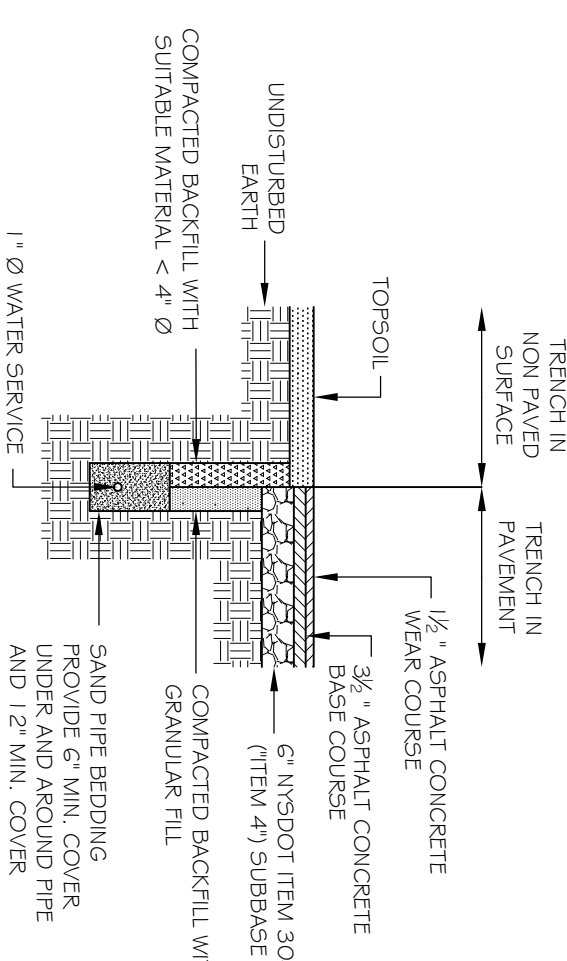
1. SEE SITTILITY PLAN FOR GENERAL NOTES, SIZES, DIMENSIONS, DEPTHS, AND RAFTES & GRATES FOR ALL CATCH BASINS.
2. THE ENDS OF ALL PIP PENETRATIONS INTO CATCH BASINS ARE TO BE FLUSH WITH THE INSIDE WALL SURFACE OF THE CATCH BASIN.
3. PAVE AROUND INTERIOR AND EXTERIOR OF ALL PIPE PENETRATIONS.
4. PLACE CATCH BASIN ON MAN, & CRUSHED STONE BEDDING.
5. PROVIDE MINIMUM OF 12" SLUMP AT BOTTOM OF ALL CATCH BASINS.
6. PROVIDE MINIMUM DROP OF 0.1' BETWEEN INLET AND OUTLET INVERT.
7. PROVIDE, OTHERWISE NOTED ON PLAN.

TYPICAL UTILITY TRENCH



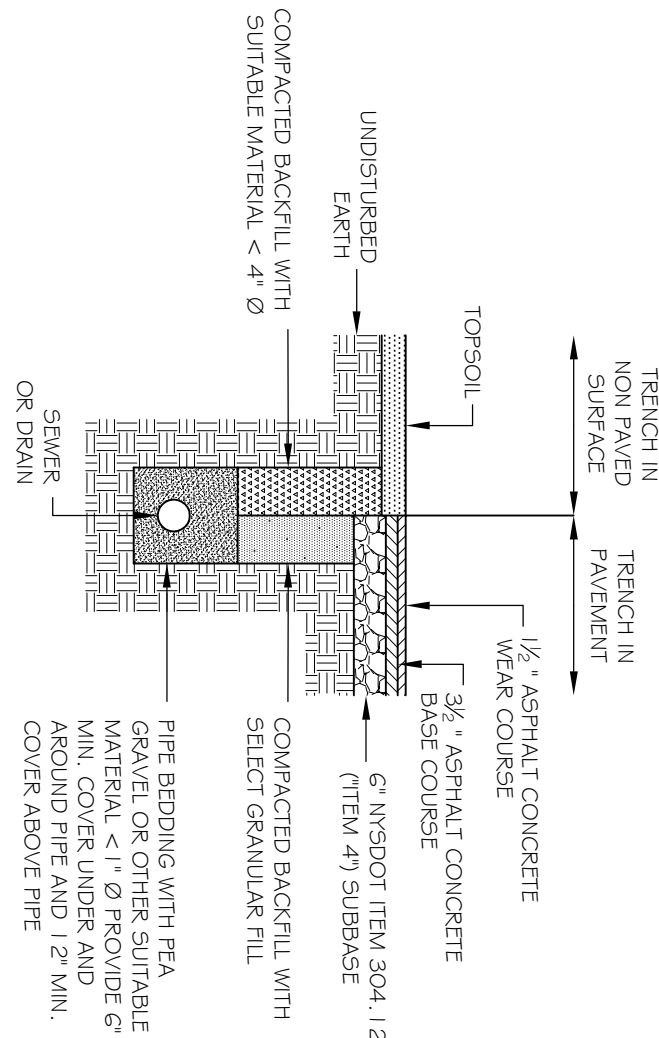
ALL UNDERGROUND CONDUIT INSTALLATIONS, INCLUDING COVER REQUIREMENTS, GROUNDING, AND PROTECTION FROM DAMAGE SHALL BE IN ACCORDANCE WITH THE NEC, CENTRAL HUDSON SPECIFICATIONS & REQUIREMENTS, AND ANY OTHER UTILITY COMPANY REQUIREMENTS.

TYPICAL WATER SERVICE TRENCH



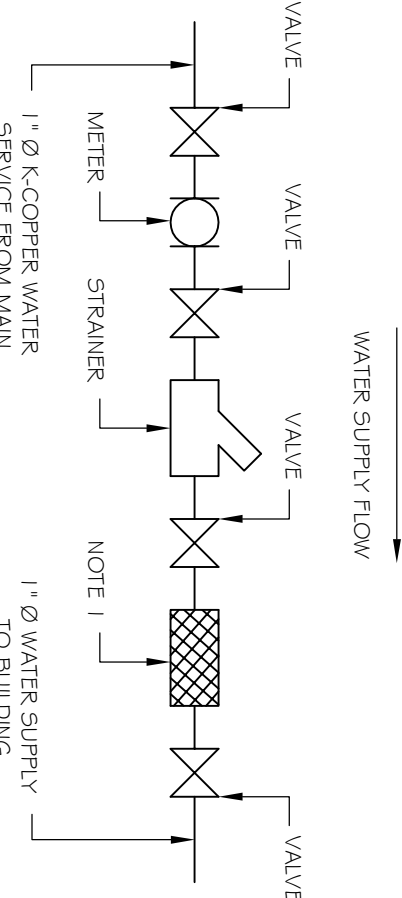
NOTE: ALL BACKFILL MATERIAL USED IN THE CITY OF BEACON ROAD RIGHT OF WAY TO BE NYSDOT ITEM NO. 304.12. ALL BACKFILL MATERIAL SHALL BE BACKFILLED IN 8" MAXIMUM LIFTS AND COMPACTED TO AT LEAST 95 % PROCTOR.

TYPICAL SEWER / DRAIN TRENCH



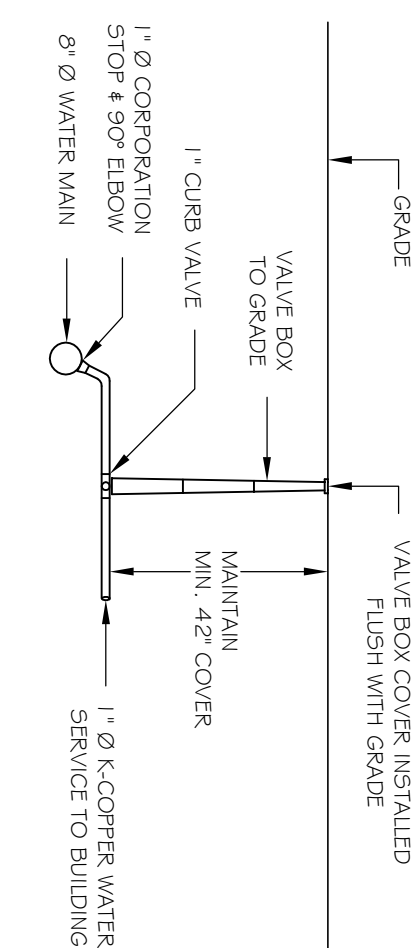
NOTE: ALL BACKFILL MATERIAL USED IN THE CITY OF BEACON ROAD RIGHT OF WAY TO BE NYSDOT ITEM NO. 304.12. ALL BACKFILL MATERIAL SHALL BE BACKFILLED IN 8" MAXIMUM LIFTS AND COMPACTED TO AT LEAST 95 % PROCTOR.

TYPICAL WATER SERVICE CHECK VALVE DETAIL



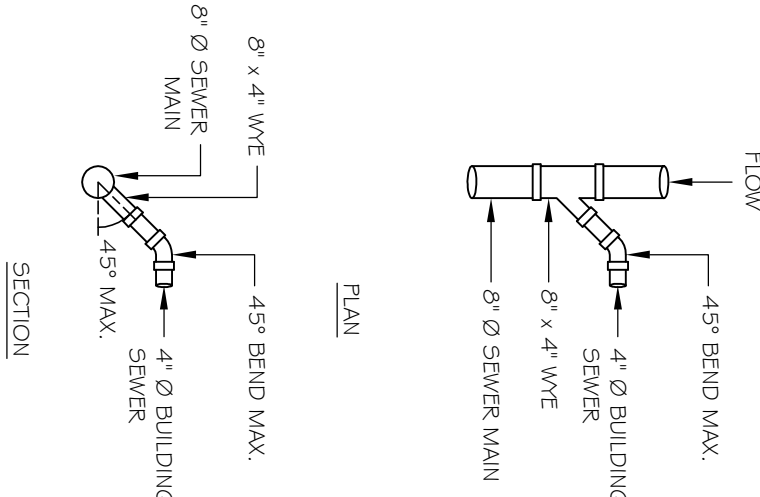
NOTE 1: A DOUBLE CHECK VALVE ASSEMBLY SHALL BE INSTALLED ON EACH WATER SERVICE. THE DOUBLE CHECK VALVE IS TO BE MODEL 007MIQ1 MANUFACTURED BY WATT'S WATER TECHNOLOGIES, INC.

TYPICAL WATER SERVICE DETAIL



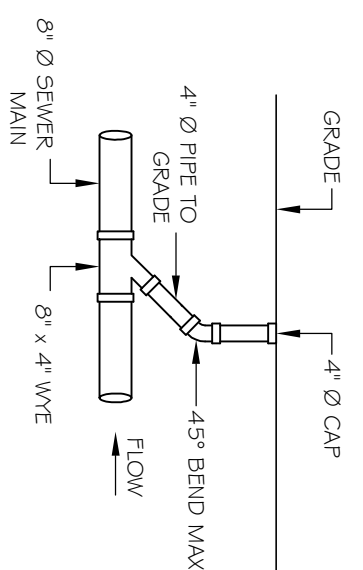
NOTE: ALL SERVICE BRASS INCLUDING CORPORATION VALVES, CURB VALVES, AND CURB BOXES TO BE MANUFACTURED BY MUELLER WATER PRODUCTS, INC. ALL CORPORATION VALVES AND CURB VALVES INLET/OUTLET CONNECTIONS TO BE COMPRESSION CONNECTIONS

TYPICAL SEWER SERVICE DETAIL

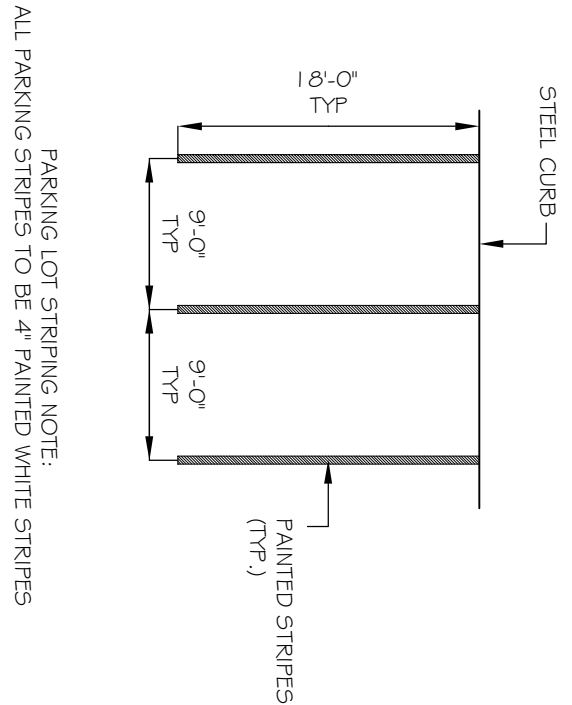


NOTE: ALL SANITARY BUILDING SEWER AND SEWER MAINS TO BE PVC (SDR) 35 PIPE WITH ELASTOMERIC GASKET JOINTS

TYPICAL SEWER CLEAN OUT DETAIL

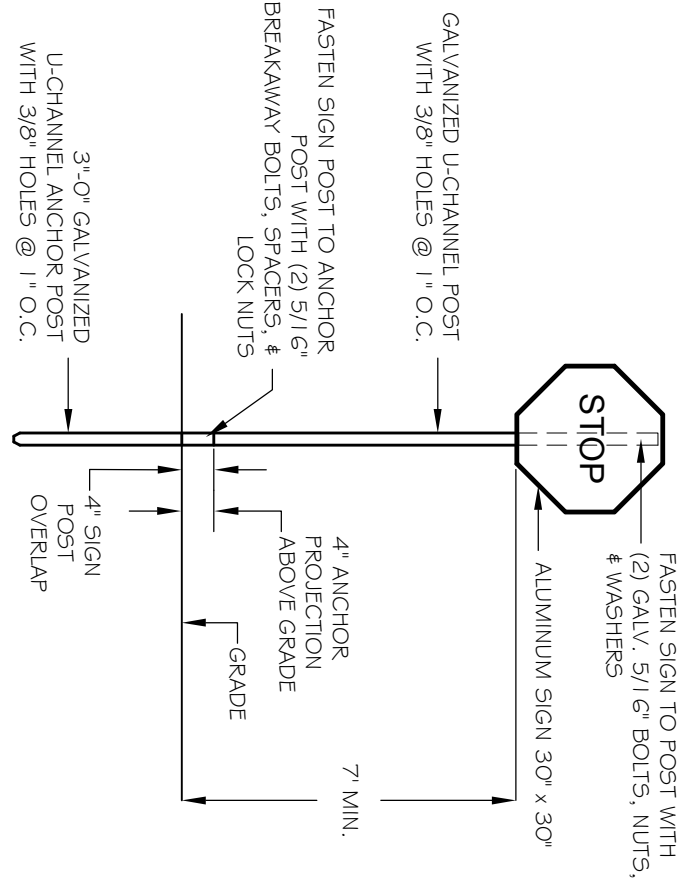


TYPICAL PARKING STRIPING DETAIL



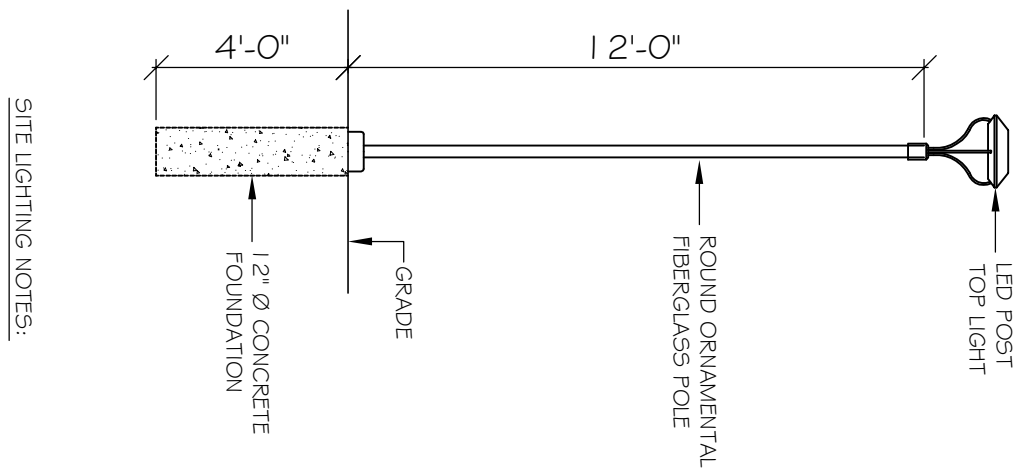
PARKING LOT STRIPING NOTE:
ALL PARKING STRIPES TO BE 4" PAINTED WHITE STRIPES

STOP SIGN DETAIL



STOP SIGN TO BE TYPE R-1 STOP SIGN IN CONFORMANCE WITH THE 2009 EDITION OF THE FHWA MUTCD FOR STREETS AND HIGHWAYS

TYPICAL POST LIGHT DETAIL



ALL POST LIGHTS TO BE MODEL # USPT5LS0WR, AS MANUFACTURED BY USAVELED, LLC, WITH 100-277 VOLT AC 50W LED LAMP WITH DUSK TO DAWN PHOTOCONTROL. POST LIGHT PROVIDES "DARK SKY DESIGN".