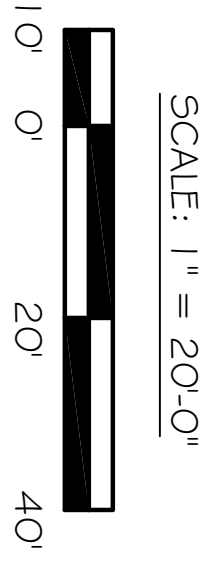
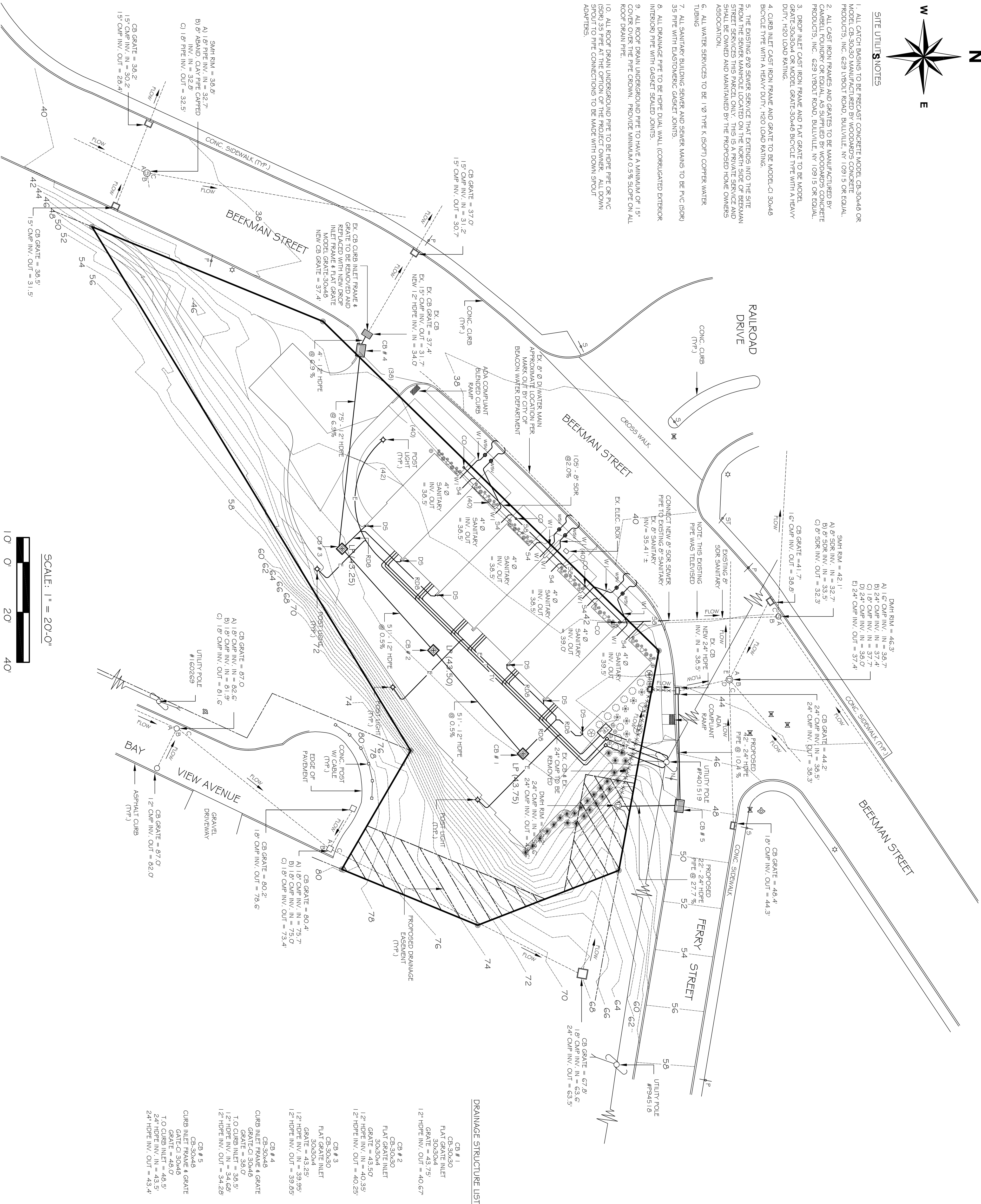


SITE UTILITIES NOTES

1. ALL CATCH BASINS TO BE PRECAST CONCRETE MODEL CB-30A48 OR MODEL CB-30A30 MANUFACTURED BY WOODWARD'S CONCRETE PRODUCTS, INC. 629 LYBOLT ROAD, BULLVILLE, NY 10915 OR EQUAL.
2. ALL CAST IRON FRAMES AND GRATES TO BE MANUFACTURED BY WOODWARD'S CONCRETE PRODUCTS, INC. 629 LYBOLT ROAD, BULLVILLE, NY 10915 OR EQUAL.
3. DROP INLET CAST IRON FRAME AND GRATE TO BE MODEL GRATE-30A304 OR MODEL GRATE-30A48 BICYCLE TYPE WITH A HEAVY DUTY, 1160 LB/IN² RATING.
4. CURB INLET CAST IRON FRAME AND GRATE TO BE MODEL-CI-30A48 BICYCLE TYPE WITH A HEAVY DUTY, 120 LB/IN² RATING.
5. THE EXISTING 48" SEWER SERVICE THAT EXTENDS INTO THE SITE FROM THE SEWER MANHOLE LOCATED ON THE NORTH SIDE OF BEEMAN STREET SERVICES THIS PARCEL ONLY. THIS IS A PRIVATE SERVICE AND SHALL BE OWNED AND MAINTAINED BY THE PROPOSED HOME OWNERS ASSOCIATION.
6. ALL WATER SERVICES TO BE 1/2" TYPE K (SOFT) COPPER WATER TUBING.
7. ALL SANITARY BUILDING SEWER AND SEWER MAINS TO BE PVC (SDR) 35 PIPE WITH ELASTOMERIC GASKET JOINTS.
8. ALL DRAINAGE PIPE TO BE HDPE DUAL WALL (CORRUGATED EXTERIOR INTERIOR PIPE WITH GASKET SEALED JOINTS).
9. ALL ROOF DRAIN UNDERGROUND PIPE TO HAVE A MINIMUM OF 1/8" COVER OVER THE PIPE CROWN. PROVIDE MINIMUM 0.5% SLOPE ON ALL ROOF DRAIN PIPE.
10. ALL ROOF DRAIN UNDERGROUND PIPE TO BE HDPE PIPE OR PVC (SDR) 35 PIPE AT THE OPTION OF THE PROJECT OWNER. ALL DOWN SPOUT TO PIPE CONNECTIONS TO BE MADE WITH DOWN SPOUT ADAPTERS.



SITE UTILITY PLAN
FOR
FERRY LANDING AT BEACON
BEEMAN AND FERRY STREET
BEACON, NY 12508

FERRY LANDING AT BEACON, LTD
DEVELOPERS · DESIGNERS · BUILDERS
POST OFFICE BOX 294
BEACON, NY 12508