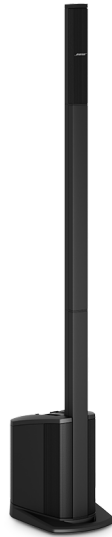




L1 Compact system

4.7 (23)



SHOP WITH CONFIDENCE

Free 2-day delivery and free return shipping

\$999.95

Order within **3 hrs 5 mins** and choose **2-Day Delivery** to receive your product by **Feb 28**

B U Y

Make this purchase with Easy Payments.

Enjoy 9 Easy Payments as low as \$111.10/month with no interest for est. total pymts of \$999.95. Minimum purchase required. Subject to credit approval. [See terms](#)

[Overview](#) [Specs](#) [Reviews](#) [Accessories](#) [FAQs](#) [Support](#)

L1 Compact system

OVERVIEW

- Bose® Spatial Dispersion™ loudspeaker technology delivers sound evenly across the stage and throughout the audience—even to the extreme sides
- Two ToneMatch® channels with fixed presets for a handheld microphone and an acoustic guitar
- Integrated bass speaker in power stand
- Two setup positions: collapsed for smaller spaces or extended for larger ones

- Ideal for musical performances, mobile DJs, classrooms, business presentations and other events

The L1 Compact portable line array system: Carry it in one trip. Set it up in one minute. Fill the room with Bose sound.

The L1 Compact system combines conventional PA and monitors into one sleek unit. Positioned behind or to the side of a performer, DJ or presenter, it delivers wide, even sound coverage throughout the stage area and audience—even off to the extreme sides. It's our smallest, lightest, easiest-to-set-up L1 system, weighing just 29 pounds.

Big sound. Small package.

Now you can have quality Bose sound for almost any gig, event or occasion. The L1 Compact system is small enough to fit in your trunk or back seat, and its innovative modular design makes setup easy and fast. You can arrange it in either a collapsed configuration for smaller spaces or a taller, extended configuration for larger ones. No extra gear to haul. No heavy speakers to hoist onto stands. No speaker cables.

A different loudspeaker

The L1 Compact system's slim loudspeaker distributes sound clearly and evenly throughout the room, thanks to Bose Spatial Dispersion technology. The speaker's unusual vertical shape makes it distinctly different from conventional PA speakers—and has a very positive effect on sound coverage. Even audience and band members off to the extreme sides hear the same clear, tonally balanced sound as those in front.

The L1 Compact loudspeaker array is smaller than those in L1 Model I and II systems, but it produces comparable horizontal sound coverage. L1 Model I and Model II loudspeakers project sound further with less dropoff of volume than the L1 Compact array.

Integrated system

With the L1 Compact system, you don't have to carry a separate amplifier, mixer or bass cabinet: They're already built in. The system's power stand includes an integrated bass speaker and amplifier, plus a built-in mixer providing a total of four inputs and two outputs.

Channel 1 is a microphone input with a customized ToneMatch preset for a handheld dynamic microphone. The preset automatically optimizes a handheld microphone's tone when used with the L1 Compact system. Channel 2 accepts up to three inputs at once, including a guitar,

keyboard or other instrument, DJ mixer, MP3 player, laptop or projector. It features a customized ToneMatch preset to optimize the sound of an acoustic guitar.

The L1 Compact system: audio performance, simplified setup and one-trip portability. Only from Bose.

Features

- Spatial Dispersion™ loudspeaker technology features six small drivers mounted at precise angles inside a slim, vertical enclosure. This proprietary Bose technology delivers nearly 180 degrees of horizontal sound coverage. Sound remains consistent even at extreme sides of the system.
- Integrated mixer in the power stand provides one microphone XLR input on channel 1; channel 2 has one instrument input, one RCA stereo input and one 1/8" stereo input. Both channels have two-stage clip lights, volume controls and a customized ToneMatch preset. Rear panel has one 1/4" balanced line output and one RCA stereo output.
- Integrated power amplifier in the power stand delivers clean, precise amplification for L1 Compact loudspeaker and bass enclosure.
- PA and monitors are combined into one lightweight, highly portable system. Proprietary Bose technology enables the system to be positioned directly behind or to the side of a performer, eliminating the need for separate PA speakers, stage monitors and mixers.
- Proprietary ToneMatch presets optimize the L1 Compact system for a dynamic handheld microphone (channel 1) or acoustic guitar (channel 2).
- Two unique setup positions, extended (78.5"H) and collapsed (16.5"H), let you tailor the system's sound coverage for the room or event. For larger audiences, use the included loudspeaker extensions to elevate the array. For smaller gatherings and meetings, leave the array in its slot on the power stand and place the system on a tabletop.
- Durable, lightweight, interlocking components make the system very easy to transport, set up and break down. The power stand weighs just 25 pounds, and the total system with loudspeaker and extensions weighs 29 pounds. No speaker cables, stands or bass modules required. The entire system can be set up in a minute or less.



SPECS

Dimensions/weight

L1 Compact power stand w/loudspeaker

array: 16.5" H x 13.25" W x 16.75" D (24.6 lbs)

L1 Compact loudspeaker

array: 16" H x 2.75" W x 2.75" D (3.0 lbs)

Each L1 Compact

extension: 32.5" H x 2.75" W x 2.75" D (2.3 lbs)

Collapsed position

(assembled): 16.5" H x 13.25" W x 16.75" D (24.6 lbs)

Extended position

(assembled): 78.5" H x 13.25" W x 16.75" D (29.2 lbs)

In the box

- L1 Compact power stand
- Power stand/loudspeaker array slip cover
- L1 Compact loudspeaker array
- L1 Compact extensions
- Power stand cord
- Extensions carrying bag

Reviews

[Write a review](#)

Rating Snapshot

Average Customer Ratings

Select a row below to filter reviews.

5 ★	<div><div></div><div></div><div></div><div></div><div></div></div>	17
4 ★	<div><div></div><div></div><div></div><div></div><div></div></div>	5
3 ★	<div><div></div><div></div><div></div><div></div><div></div></div>	1
2 ★	<div><div></div><div></div><div></div><div></div><div></div></div>	0
1 ★	<div><div></div><div></div><div></div><div></div><div></div></div>	0

Overall	<div><div></div><div></div><div></div><div></div><div></div></div>	4.7
Sound Quality	<div><div></div><div></div><div></div><div></div><div></div></div>	4.8
Durability	<div><div></div><div></div><div></div><div></div><div></div></div>	4.8
Ease of Use	<div><div></div><div></div><div></div><div></div><div></div></div>	4.9
Compatibility	<div><div></div><div></div><div></div><div></div><div></div></div>	4.7
Ease of set-up	<div><div></div><div></div><div></div><div></div><div></div></div>	5.0
Appearance/Design	<div><div></div><div></div><div></div><div></div><div></div></div>	4.7

Most Helpful Favourable Review



curteye · 2 years ago

From 802's to the L1's

I have happily used Bose 802's since the '70's and finally got a pair of L1's....
[Show Full Review](#)

214 of 220 people found this helpful

[See more 4 and 5 star reviews](#)

Most Helpful Critical Review



Mixer man · 3 years ago

Easy to use yes But....

I just mixed a show with one of these provided by the band. It was the easiest pa I have ever set up... [Show Full Review](#)

38 of 47 people found this helpful

[See more 1, 2, and 3 star reviews](#)

1-2 of 23 Reviews

Sort by: Highest to Lowest Rating ▾



KickBend

Review **1**

Votes **4**

Gender **Male**

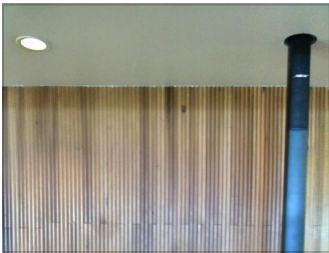
Age **45 to 54**



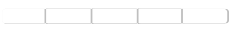
5+ years of quality and reliability

I bought a Bose L1 Compact in summer of 2013, and it is still a joy to transport and push to its limit at gigs. The manual doesn't say this, but if the Bose L1 Compact is too tall for the stage, simply remove a recessed light bulb and associated trim. The Bose L1 Compact speaker will readily fit into a standard 4" recessed light housing!

Length of ownership 1 year or longer



Sound Quality



Durability



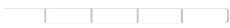
Ease of Use



Compatibility



Ease of set-up



Appearance/Design



Helpful? **Yes · 4** **No · 3** **Report**



Mark

Review **1**

Votes **21**

Gender **Male**

Age **55 to 64**

★★★★★ · 5 months ago

Excellent sound, very lightweight

Bose L1 Compact review I purchased this system a little over a month ago. Since that time, I've had opportunity to use the system in a number of different settings. At church, I've used the system for guitar support, playing a Taylor GS with a K&K system on a day when I had no piano or drummer. It worked beautifully! The sound is extremely clear, with a great deal of headroom; no feedback, no hum, and no white noise. A week later, I used the system at a family party, playing outdoors for a group of about 60 or 70 people. Because there were other singers and players, I used a Yamaha MG06X mixer. It was flawless, filling the party evenly and fully. At home, I've used the system for playlists and it sounds great. An important note: this system works with two extensions, one extension, or no extensions. There seems to be confusion about that. All three configurations sound great. Full disclosure: I am a long time Bose fan, using computer speakers and a Cinemate system in my home. Both sets of speakers are over 15 years old and function beautifully. The Bose L1 Compact is a wonderful system with far more volume and depth than you would expect from a 25 pound system. I've been playing for well over four decades and am truly impressed with the quality of this system. Do yourself a favor and try this out.

Length of ownership 1 month

Sound Quality



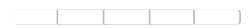
Durability



Ease of Use



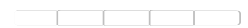
Compatibility



Ease of set-up



Appearance/Design



Helpful? **Yes · 21** **No · 0** **Report**

Load More

ACCESSORIES



T4S ToneMatch mixer

\$599.95

(5)

Four-channel interface, studio quality EQ, dynamics and effects. LED display.

DETAILS

BUY



T8S ToneMatch mixer

\$899.95

(3)

Eight-channel interface, studio quality EQ, dynamics and effects. LED display.

DETAILS

BUY



L1® Compact microphone accessory pack

\$149.95

(0)

DETAILS

BUY

FAQS

Does every musician need his or her own L1 system?

In what types of venues can I use this L1 system?

Can the system be used as a traditional PA?

What's the optimal placement for the system when using it in the collapsed position?

Can the system be used outdoors?

Can I add a T1 ToneMatch® audio engine in the future?

Where can I find more technical information and discussions about L1 systems?

SUPPORT

Manuals/guides

Owner's guide:

[English](#)

[Multilingual](#)

Bose Portable PA Community

[Visit the forum](#)

Browse user comments, get detailed product information and join the conversation.

